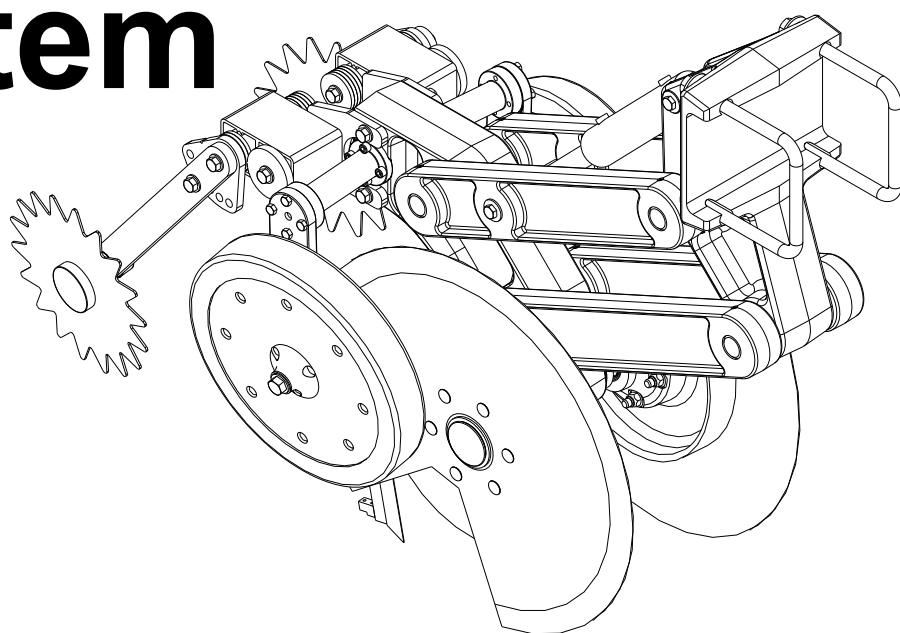




P.O. Box 526 - Spearville, Kansas 67876 - (620) 227-7106
crustbuster.com

Deep Band System



OWNER'S MANUAL

OPERATION • MAINTENANCE • REPAIR PARTS

Identification

Your CrustBuster® drill is identified by a Serial Number and Model Number. Record these numbers in the spaces provided in this manual and refer to them when ordering parts or requesting service.

Serial Number	Model Number
---------------	--------------

Warranty

WARRANTY: In addition to the implied warranties of fitness and of merchantability, CrustBuster®/Speed King, Inc. warrants new products sold by it to be free from defects in workmanship and material for a period of 12 months, from the date of delivery to the first user customer. Warranty on purchased parts (cylinder, blades, bearings, shanks, etc.) will be the same as that offered by the appropriate manufacturer of these parts.

EXCLUSIONS: No warranty of any kind is made by CrustBuster®/Speed King, Inc. with regard to new products which have been subject to operation in excess of recommended capacities, misuse, abuse, negligence, or accident, or have been altered or repaired in any manner not authorized by CrustBuster®/Speed King, Inc. CrustBuster®/Speed King, Inc. is constantly striving to improve its products. Changes in design and improvement will be made whenever CrustBuster®/Speed King, Inc. believes the efficiency of its products will be improved thereby, but without incurring any obligation to incorporate such improvements in any products which have been shipped or are in service. No obligation exists for compensation of unauthorized repairs or modifications without prior approval. And in no event will CrustBuster®/Speed King, Inc. be liable for consequential damages, such as but not limited to: downtime, delayed or late tillage or planting, etc.

WARRANTY REGISTRATION: This warranty is not valid unless registered with CrustBuster®/Speed King, Inc. within 10 days from the date of purchase. It is the sole responsibility of the selling retail dealer to fill out the registration forms and see that they are properly filed with CrustBuster®/Speed King, Inc. This can be done at crustbuster.com.

WARRANTY PROCEDURE: Should any part fail to conform with this warranty, CrustBuster®/Speed King, Inc. will repair or replace the part or parts which do not conform. If a part is defective, take it to your authorized CrustBuster® Farm Equipment Dealer immediately, along with your warranty registration, and complete the proper forms requesting a warranty adjustment. Our representative will pick up the part to be returned to the factory for examination. If the customer (first user) requests that a new part be substituted for the old part, a new part will be charged to the dealer who will in turn charge the customer. If the part is found by us to be defective, a credit for the part will be given to the dealer to be passed on to the customer. If the dealer or customer wishes to repair the part, this will be done only if authorized by CrustBuster®/Speed King, Inc. This warranty procedure is in addition to all remedies authorized by law.

CRUSTBUSTER®/SPEED KING, INC.
Box 526
Spearville, KS 67876

Table of Contents

Identification and Warranty	Hub Assembly	13
. Inside Front Cover	Cleaning Wheel Assembly	14
Specifications..... 1	Knife Assembly 15"	14
Safety..... 2-10	Knife Assembly 20"	15
Body Assembly	Knife Assembly 30"	15
Attachment Assembly..... 11	Closing Wheel Assembly	16
Link Assembly	Square U-Bolt Assembly	16
Cylinder Assembly	Tension Spring	16
Coulter Blade Assembly..... 13	Application Tubes..... 17	
	Cylinder Seal Kit..... 18	
	Hydraulic Hose & Fittings..... 18	

Specifications

Spacing	Number Openers	Weight w/ Application Units
15"	1	500 lbs.
20"	1	500 lbs.
30"	1	500 lbs.

**BE A SAFE OPERATOR
BY THINKING BEFORE ACTING
AND
BY READING
YOUR OWNER'S MANUAL**

Avoid Accidents

Most accidents, whether they occur in industry, on the farm, at home, or on the highway, are caused by the failure of some individual to follow simple and fundamental safety rules or precautions. For this reason most accidents can be prevented by recognizing the real cause and doing something about it before the accident occurs.

Regardless of the care used in the design and construction of any type of equipment, there are many conditions that cannot be completely safeguarded against without interfering with reasonable accessibility and efficient operation.

A CAREFUL OPERATOR
is the Best Insurance Against an Accident.
The complete observance of one simple rule would prevent many thousands of serious injuries each year.

That rule is:

**Never Attempt to
Clean, Oil, or Adjust
A Machine While It Is In Motion.**

To Our Customers

The following pages and illustrations are printed to help supply you with the knowledge to better operate and service your new CrustBuster equipment.

We are proud to have you as a customer and feel you will be proud to be a CrustBuster owner.

Any piece of equipment needs, and must have, a certain amount of service and maintenance to keep it in top running condition. We have attempted to cover all the adjustments required to fit most conditions; however, there may be times when special care must be taken to fit a condition.

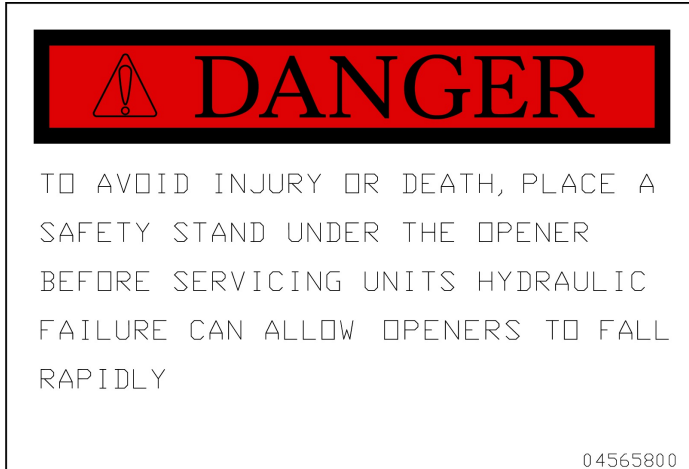
Study this owner's manual carefully and become acquainted with all the adjustments and operating procedures before attempting to operate your new equipment. Remember, it is a machine and has been designed and tested to do an efficient job in most operating conditions and will perform in relation to the services it receives.

If special attention is required for some condition, ask your CrustBuster dealer; he will be glad to help and answer any questions on operations and service of your new machine.

TAKE TIME FOR SAFETY

Safety Decals

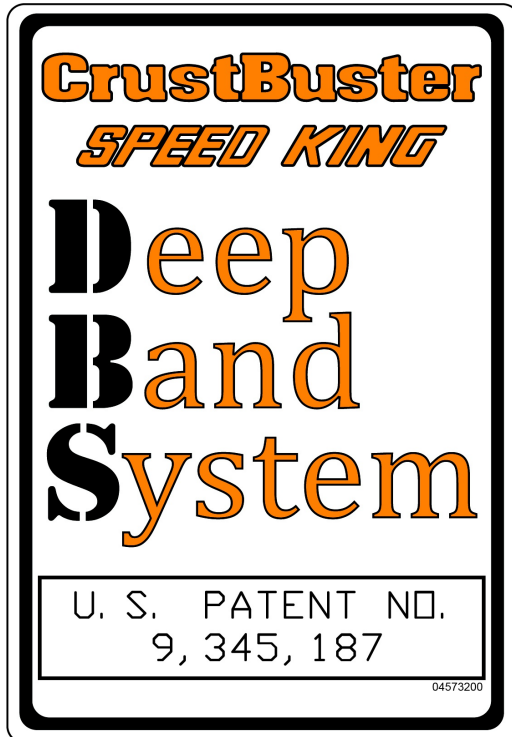
#04565800



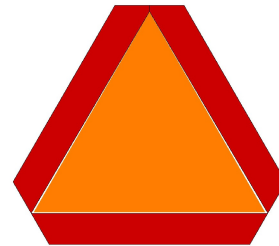
#608018



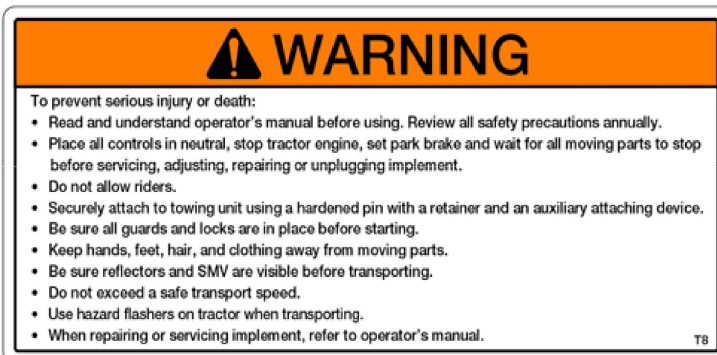
#04573200



#604512



#608026

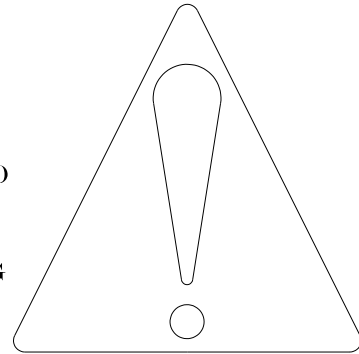


Safety

RECOGNIZE SAFETY INFORMATION

THIS IS THE SAFETY-ALERT SYMBOL. WHEN YOU SEE THIS SYMBOL ON YOUR MACHINE OR IN THIS MANUAL, BE ALERT TO THE POTENTIAL FOR PERSONAL INJURY.

FOLLOW RECOMMENDED PRECAUTIONS AND SAFE OPERATING PRACTICES.



UNDERSTAND SIGNAL WORDS

A SIGNAL WORD-DANGER, WARNING, OR CAUTION-IS USED WITH THE SAFETY-ALERT SYMBOL. DANGER IDENTIFIES THE MOST SERIOUS HAZARDS.

DANGER OR WARNING SAFETY SIGNS ARE LOCATED NEAR SPECIFIC HAZARDS. GENERAL PRECAUTIONS ARE LISTED ON CAUTION SAFETY SIGNS. CAUTION ALSO CALLS ATTENTION TO SAFETY MESSAGES IN THIS MANUAL.



DANGER



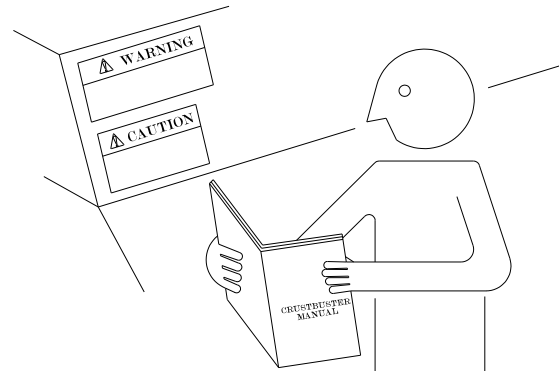
WARNING



CAUTION

FOLLOW SAFETY INSTRUCTIONS

CAREFULLY READ ALL SAFETY MESSAGES IN THIS MANUAL AND ON YOUR MACHINE SAFETY SIGNS. KEEP SAFETY SIGNS IN GOOD CONDITION. REPLACE MISSING OR DAMAGED SAFETY SIGNS. BE SURE NEW EQUIPMENT COMPONENTS AND REPAIR PARTS INCLUDE THE CURRENT SAFETY SIGNS. REPLACEMENT SAFETY SIGNS ARE AVAILABLE FROM YOUR CRUSTBUSTER DEALER.



LEARN HOW TO OPERATE THE MACHINE AND HOW TO USE CONTROLS PROPERLY. DO NOT LET ANYONE OPERATE WITHOUT INSTRUCTION.

KEEP YOUR MACHINE IN PROPER WORKING CONDITION. UNAUTHORIZED MODIFICATIONS TO THE MACHINE MAY IMPAIR THE FUNCTION AND/OR SAFETY AND AFFECT MACHINE LIFE.

IF YOU DO NOT UNDERSTAND ANY PART OF THIS MANUAL AND NEED ASSISTANCE, CONTACT YOUR CRUSTBUSTER DEALER.

Safety

OPERATE SAFELY

DO NOT OPERATE EQUIPMENT WITH MORE THEN ONE PERSON ON THE TRACTOR.

DO NOT ALLOW ANYONE TO RIDE ON THE EQUIPMENT.

DO NOT OPERATE CLOSE TO A DITCH OR CREEK.

DRIVE SLOWLY OVER ROUGH GROUND.

SHIFT THE TRACTOR INTO A LOWER GEAR WHEN OPERATING ON STEEP SLOPES.

IF YOUR TRACTOR IS EQUIPPED WITH A ROLL-GUARD SAFETY CANOPY AND A SEAT BELT, BE SURE TO KEEP YOUR SEAT BELT FASTENED WHEN OPERATING OR TRANSPORTING THE DRILL.

HANDLE AND APPLY CHEMICALLY TREATED SEEDS ACCORDING TO MANUFACTURER'S RECOMMENDATIONS. PROPERLY DISPOSE OF UNUSED TREATED SEEDS AND THEIR CONTAINERS.

ALWAYS SHUT OFF TRACTOR ENGINE AND SHIFT TO PARK WHEN LEAVING TRACTOR. REMOVE KEY WHEN LEAVING TRACTOR UNATTENDED.

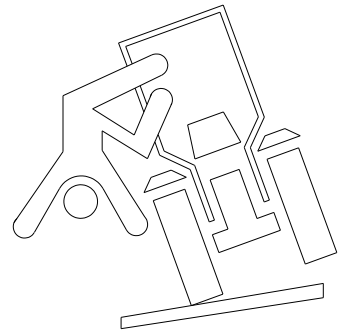
AVOID TIP-OVERS

USE A SEAT BELT UNDER ALMOST ALL OPERATING CONDITIONS.

AVOID HOLES, DITCHES, AND OBSTRUCTIONS WHICH MAY CAUSE THE MACHINE TO TIP, ESPECIALLY ON HILLSIDES.

NEVER DRIVE NEAR THE EDGE OF A GULLY OR STEEP EMBANKMENT-IT MIGHT CAVE IN.

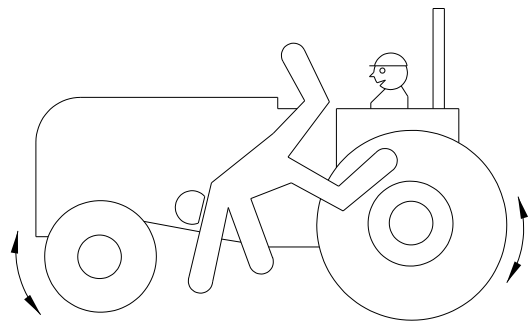
SLOW DOWN FOR HILLSIDES, ROUGH GROUND, AND SHARP TURNS.



KEEP RIDERS OFF MACHINE

ONLY ALLOW THE OPERATOR ON THE MACHINE.
KEEP RIDERS OFF.

RIDERS ON MACHINE ARE SUBJECT TO INJURY SUCH AS BEING STRUCK BY FOREIGN OBJECTS AND BEING THROWN OFF OF THE MACHINE. RIDERS ALSO OBSTRUCT THE OPERATOR'S VIEW RESULTING IN THE MACHINE BEING OPERATED IN AN UNSAFE MANNER.



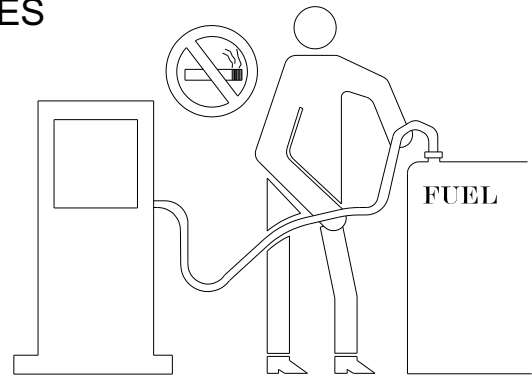
Safety

HANDLE FUEL SAFELY - AVOID FIRES

HANDLE FUEL WITH CARE: IT IS HIGHLY FLAMMABLE.
DO NOT REFUEL THE MACHINE WHILE SMOKING OR
WHEN NEAR OPEN FLAME OR SPARKS.

ALWAYS STOP ENGINE BEFORE REFUELING MACHINE.
FILL FUEL TANK OUTDOORS.

PREVENT FIRES BY KEEPING MACHINE CLEAN OF
ACCUMULATED TRASH, GREASE, AND DEBRIS.
ALWAYS CLEAN UP SPILLED FUEL.

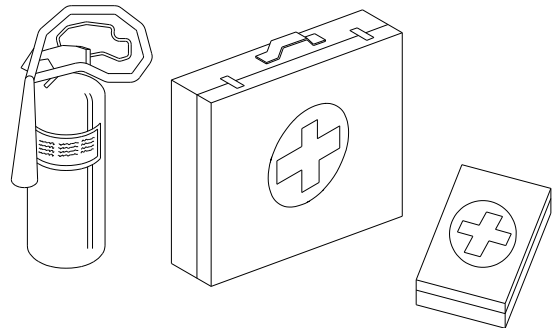


PREPARE FOR EMERGENCIES

BE PREPARED IF A FIRE STARTS.

KEEP A FIRST AID KIT AND FIRE EXTINGUISHER
HANDY.

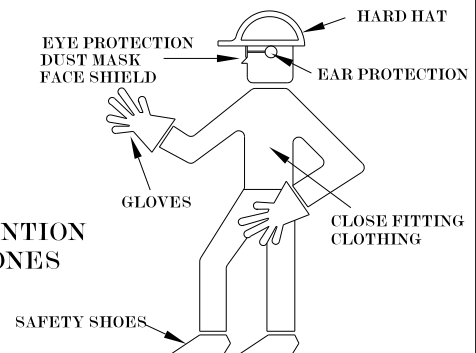
KEEP EMERGENCY NUMBERS FOR DOCTORS,
AMBULANCE SERVICE, HOSPITAL, AND FIRE
DEPARTMENT NEAR YOUR TELEPHONE.



WEAR PROTECTIVE CLOTHING

WEAR CLOSE FITTING CLOTHING AND SAFETY EQUIPMENT
APPROPRIATE TO THE JOB.

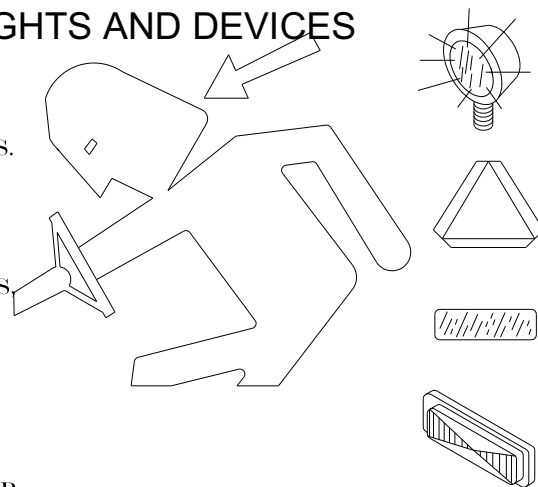
OPERATING EQUIPMENT SAFELY REQUIRES THE FULL ATTENTION
OF THE OPERATOR. DO NOT WEAR RADIO OR MUSIC HEADPHONES
WHILE OPERATING MACHINE.



USE SAFETY LIGHTS AND DEVICES

PREVENT COLLISIONS BETWEEN OTHER ROAD
USERS, SLOW MOVING TRACTORS WITH
ATTACHMENT OR TOWED EQUIPMENT, AND
SELF-PROPELLED MACHINES ON PUBLIC ROADS.
FREQUENTLY CHECK FOR TRAFFIC FROM THE
REAR, ESPECIALLY IN TURNS, AND USE HAND
SIGNALS OR TURN SIGNAL LIGHTS.

USE HEADLIGHTS, FLASHING WARNING LIGHTS,
AND TURN SIGNALS DAY AND NIGHT. FOLLOW
LOCAL REGULATIONS FOR EQUIPMENT
LIGHTING AND MARKING. KEEP LIGHTING
AND MARKING VISIBLE AND IN GOOD WORKING
ORDER. REPLACE OR REPAIR LIGHTING AND
MARKING THAT HAS BEEN DAMAGED OR LOST.
AN IMPLEMENT SAFETY LIGHTING KIT IS
AVAILABLE FROM YOUR CRUSTBUSTER DEALER.



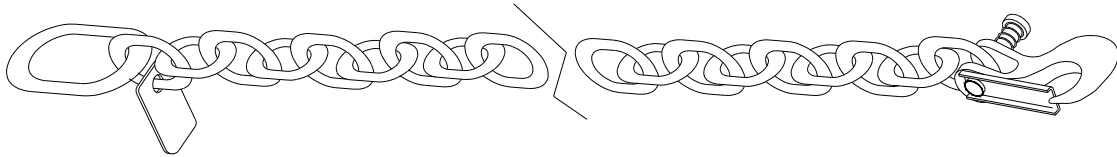
Safety

USE A SAFETY CHAIN

A SAFETY CHAIN WILL HELP CONTROL DRAWN EQUIPMENT SHOULD IT ACCIDENTALLY SEPERATE FROM THE DRAWBAR.

ATTACH THE SAFETY CHAIN TO THE TRACTOR DRAWBAR SUPPORT OR OTHER SPECIFIED ANCHOR LOCATION. PROVIDE ONLY ENOUGH SLACK IN THE CHAIN TO PERMIT TURNING.

SEE YOUR CRUSTBUSTER DEALER FOR A CHAIN WITH A STRENGTH RATING EQUAL TO OR GREATER THEN THE GROSS WEIGHT OF THE TOWED MACHINE. DO NOT USE SAFETY CHAIN FOR TOWING.



TRANSPORT SAFELY

IF EQUIPPED WITH ROW MARKERS, KNOW THE TRANSPORT HEIGHT OF YOUR MARKER ARM AND OVERHEAD WIRES. STOP SLOWLY.

ALWAYS RAISE THE FRONT JACK STAND BEFORE TRANSPORTING.

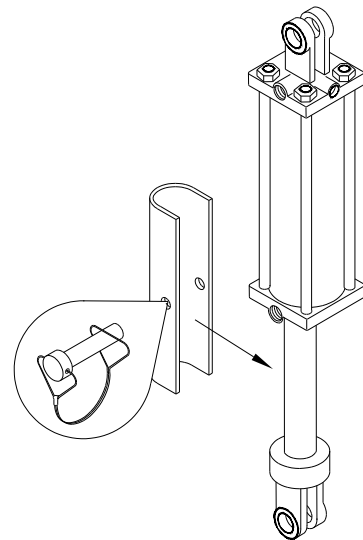
RAISE OPENERS FULLY AND PLACE OPENER LOCK-UP BRACKETS ON CYLINDERS TO PREVENT OPENERS FROM LOWERING. SECURE WITH PIN.

SHIFT THE TRACTOR INTO A LOWER GEAR WHEN TRANSPORTING DOWN STEEP SLOPES OR HILLS.

DO NOT TRANSPORT UNLESS THE GRAIN DRILL REFLECTORS, LIGHTS AND SMV EMBLEM ARE EASILY VISIBLE FROM THE REAR.

NEVER TRANSPORT THE GRAIN DRILL FASTER THAN 24 KM/H (15 MPH). REDUCE SPEED WHEN TRAVELING OVER ROUGH GROUND.

DO NOT TRANSPORT DRILL WITH GRAIN IN BOX.



Safety

TOW LOADS SAFELY

STOPPING DISTANCE INCREASES WITH SPEED AND WEIGHT OF TOWED LOADS, AND ON SLOPES. TOWED LOADS WITH OR WITHOUT BRAKES THAT ARE TOO HEAVY FOR THE TRACTOR OR ARE TOWED TOO FAST CAN CAUSE LOSS OF CONTROL. CONSIDER THE TOTAL WEIGHT OF THE EQUIPMENT AND ITS LOAD.

OBSERVE RECOMMENDED MAXIMUM ROAD SPEEDS, OR LOCAL SPEED LIMITS WHICH MAY BE LOWER.

IF TOWED EQUIPMENT DOES NOT HAVE BRAKES, DO NOT TRAVEL MORE THAN 24 KM/H (15 MPH) AND DO NOT TOW LOADS MORE THAN 1.5 TIMES THE TRACTOR WEIGHT.

IF TOWED EQUIPMENT HAS BRAKES, DO NOT TRAVEL MORE THAN 40 KM/H (25 MPH) AND DO NOT TOW LOADS MORE THAN 4.5 TIMES THE TRACTOR WEIGHT.

ENSURE THE LOAD DOES NOT EXCEED THE RECOMMENDED WEIGHT RATIO. ADD BALLAST TO RECOMMENDED MAXIMUM FOR TRACTOR, LIGHTEN THE LOAD, OR GET A HEAVIER TOWING UNIT. THE TRACTOR MUST BE HEAVY AND POWERFUL ENOUGH WITH ADEQUATE BRAKING POWER FOR THE TOWED LOAD. USE ADDITIONAL CAUTION WHEN TOWING LOADS UNDER ADVERSE SURFACE CONDITIONS, WHEN TURNING, AND ON INCLINES.

PRACTICE SAFE MAINTENANCE

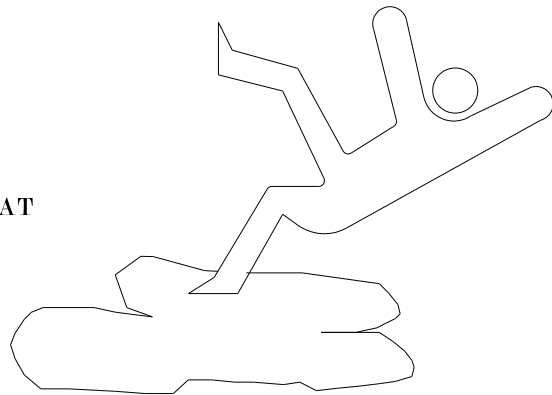
UNDERSTAND SERVICE PROCEDURE BEFORE DOING WORK.
KEEP AREA CLEAN AND DRY.

NEVER LUBRICATE, SERVICE, OR ADJUST MACHINE WHILE IT IS MOVING. KEEP HANDS, FEET, AND CLOTHING FROM POWER DRIVEN PARTS. DISENGAGE ALL POWER AND OPERATE CONTROLS TO RELIEVE PRESSURE. LOWER EQUIPMENT TO THE GROUND. STOP THE ENGINE. REMOVE THE KEY. ALLOW MACHINE TO COOL.

SECURELY SUPPORT ANY MACHINE ELEMENTS THAT MUST BE RAISED FOR SERVICE WORK.

KEEP ALL PARTS IN GOOD CONDITION AND PROPERLY INSTALLED. FIX DAMAGE IMMEDIATELY. REPLACE WORN OR BROKEN PARTS. REMOVE ANY BUILDUP OF GREASE, OIL, OR DEBRIS.

DISCONNECT BATTERY GROUND CABLE (-) BEFORE MAKING ADJUSTMENTS ON ELECTRICAL SYSTEMS OR WELDING ON MACHINE.



Safety

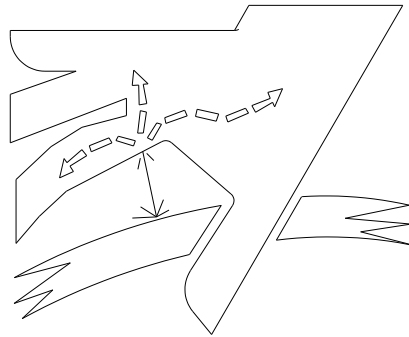
AVOID HIGH-PRESSURE FLUIDS

ESCAPING FLUID UNDER PRESSURE CAN PENETRATE THE SKIN CAUSING SERIOUS INJURY.

AVOID THE HAZARD BY RELIEVING PRESSURE BEFORE DISCONNECTING HYDRAULIC OR OTHER LINES. TIGHTEN ALL CONNECTIONS BEFORE APPLYING PRESSURE.

SEARCH FOR LEAKS WITH A PIECE OF CARDBOARD. PROTECT HANDS AND BODY FROM HIGH PRESSURE FLUIDS.

IF AN ACCIDENT OCCURS, SEE A DOCTOR IMMEDIATELY. ANY FLUID INJECTED IN THE SKIN MUST BE SURGICALLY REMOVED WITHIN A FEW HOURS OR GANGRENE MAY RESULT. DOCTORS UNFAMILIAR WITH THIS TYPE OF INJURY SHOULD REFERENCE A KNOWLEDGEABLE MEDICAL SOURCE.



DANGER: Indicates an imminently hazardous situation which, if not avoided, will result in death or serious injury.



WARNING: Indicates a hazardous situation which, if not avoided, could result in death or serious injury.



CAUTION: Indicates a potentially hazardous situation which, if not avoided, may result in minor or moderate injury.



NOTICE: Used to address practices not related to physical injury.



Before Unfolding and Operating This Equipment ---

Read and understand this owner's manual.



Safety Instructions



- Extreme care needs to be taken when handling DBS units. If mishandled, serious bodily injury or death can occur!
- The DBS units weighs 659 lbs. per unit. Never try to lift units by hand. Always use rated lifting equipment to handle DBS units.
- Always use 2 lifting points on units when handling DBS units. Always Keep clear of DBS when lifting in case load falls.
- DBS units come preassembled on shipping brackets. Never attempt to remove u-bolts before weight of DBS units is supported by proper lifting or serious bodily injury can occur.
- DBS units DO NOT come with hydraulic cylinders pre charged, if not lifted properly, cylinder could extend or retract causing DBS unit to fall. Serious bodily injury or death can occur.
- After installing DBS units on tool bar, make sure that u-bolts are tightened, before releasing lifting equipment.
- Before releasing lifting equipment, make sure to support opener with an appropriate block until hydraulics have been connected and all cylinders have been charged.



CAUTION: Your equipment weighs more than the towing vehicle. The applicator is NOT equipped with brakes. **EXERCISE EXTREME CAUTION ! Maximum allowable speed - 15 mph.**

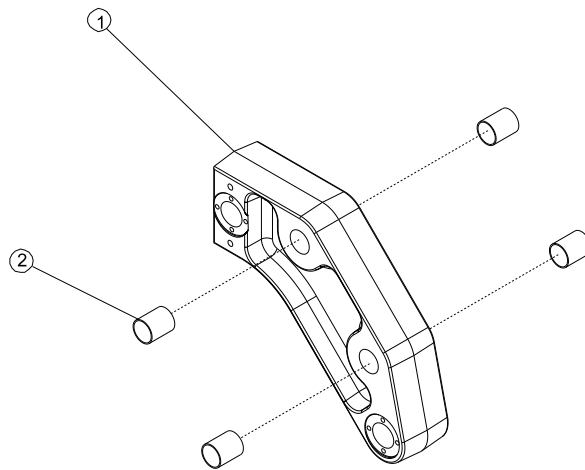
NEVER ALLOW ANYONE TO RIDE THE APPLICATOR!

Field Operating Checklist

- ___ Remove **ALL** transport locks.
- ___ Inflate tires to recommended air pressure.
- ___ Lubrication as required.
- ___ Drill adjusted at hitch for level field operation.
- ___ Down pressure set for soil conditions.
- ___ Lower unit while moving forward to avoid plugging openers.
- ___ Allow no riders.
- ___ After approximately 10 hours, wheel bolts, etc.. Make sure they are tight.

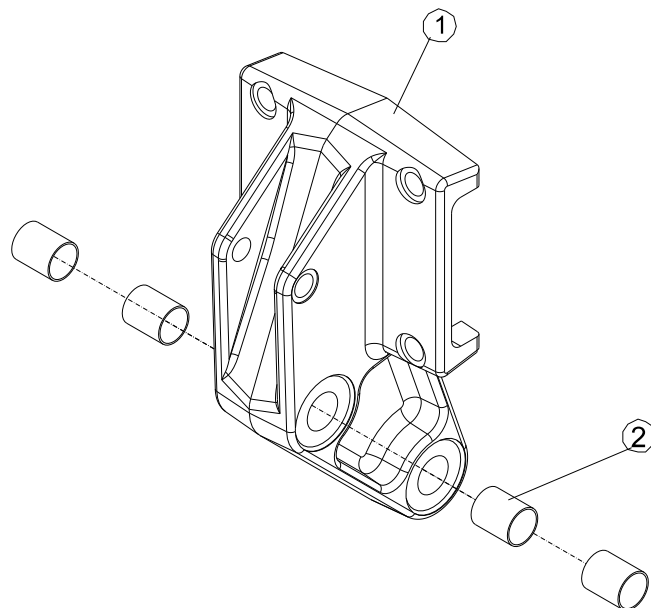
Body Assembly

Item	Qty	Part No.	Description
1	1	551572	Attachment Machined
2	4	644435	Body Bearings



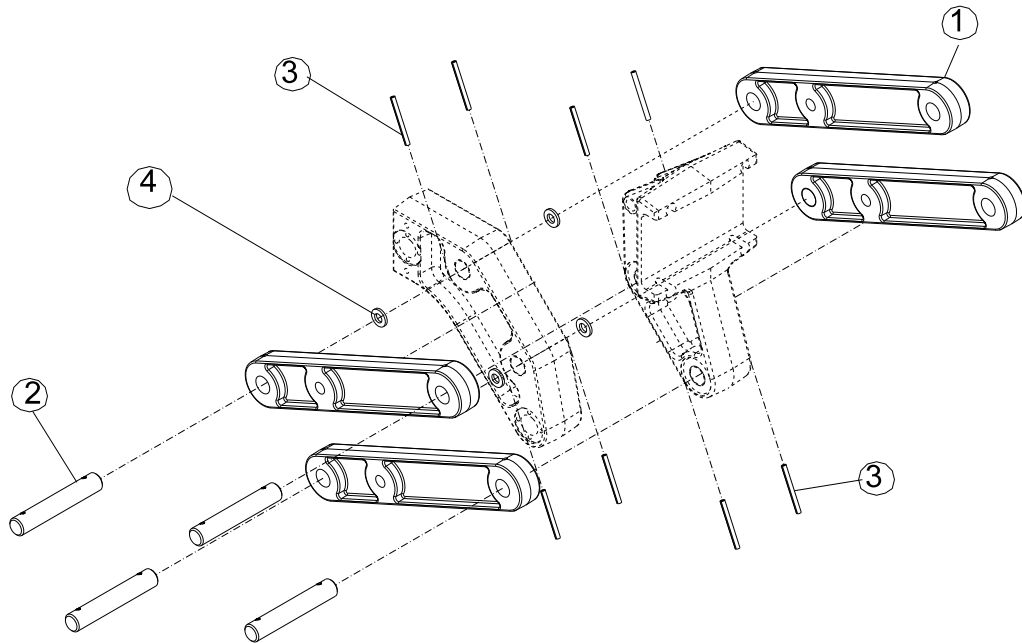
Attachment Assembly

Item	Qty	Part No.	Description
1	1	551556	Attachment Machined
2	4	644435	Body Bearings



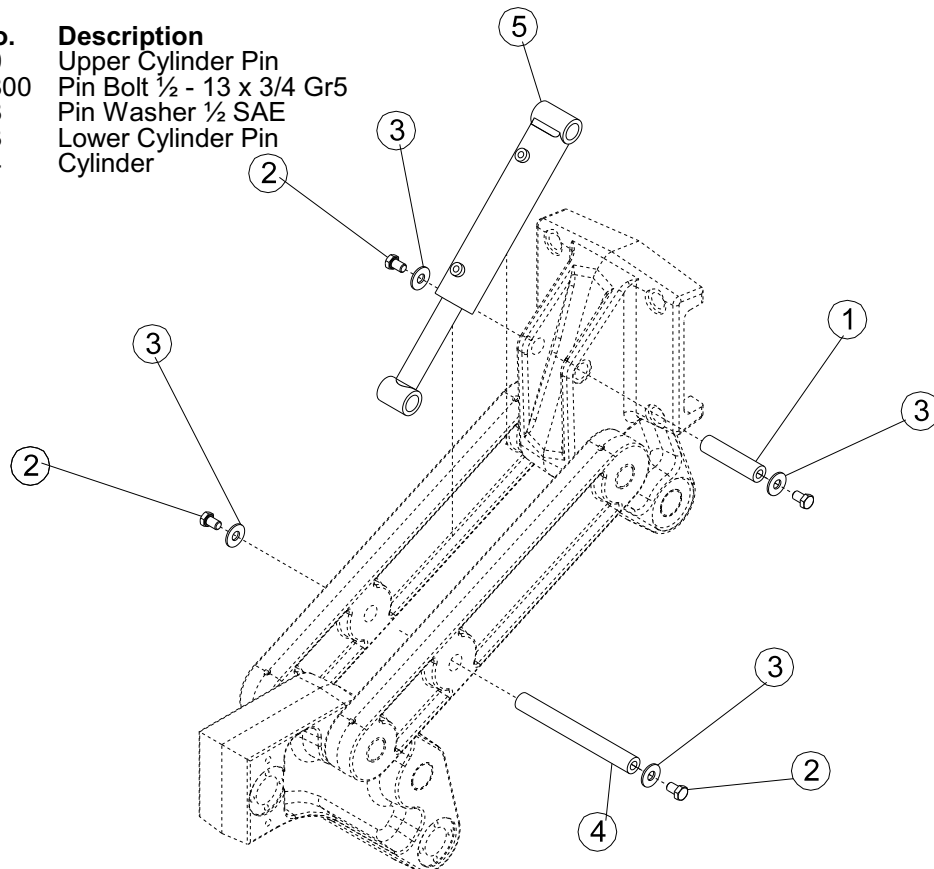
Link Assembly

Item	Qty	Part No.	Description
1	4	551481	Link Machined
2	4	315168	1 1/2 Pin
3	4	332023	Slotted Spring Pin
4	4	335794	Washer 1 1/2 Flat SAE



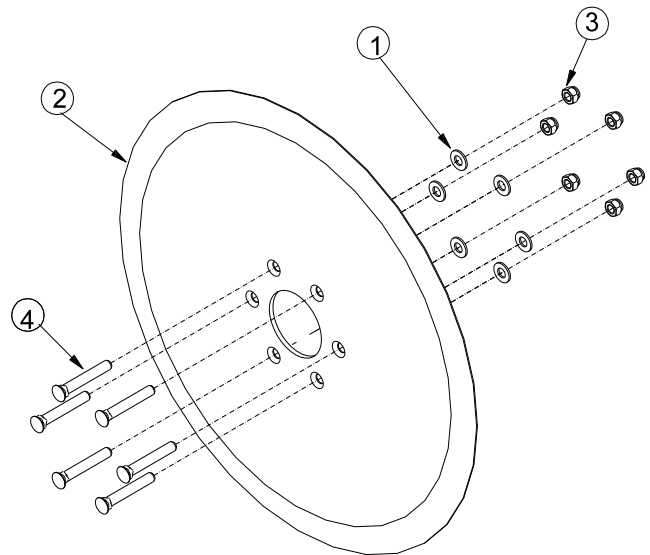
Cylinder Assembly

Item	Qty	Part No.	Description
1	1	315150	Upper Cylinder Pin
2	4	01029800	Pin Bolt 1/2 - 13 x 3/4 Gr5
3	14	335828	Pin Washer 1/2 SAE
4	1	315143	Lower Cylinder Pin
5	1	476044	Cylinder



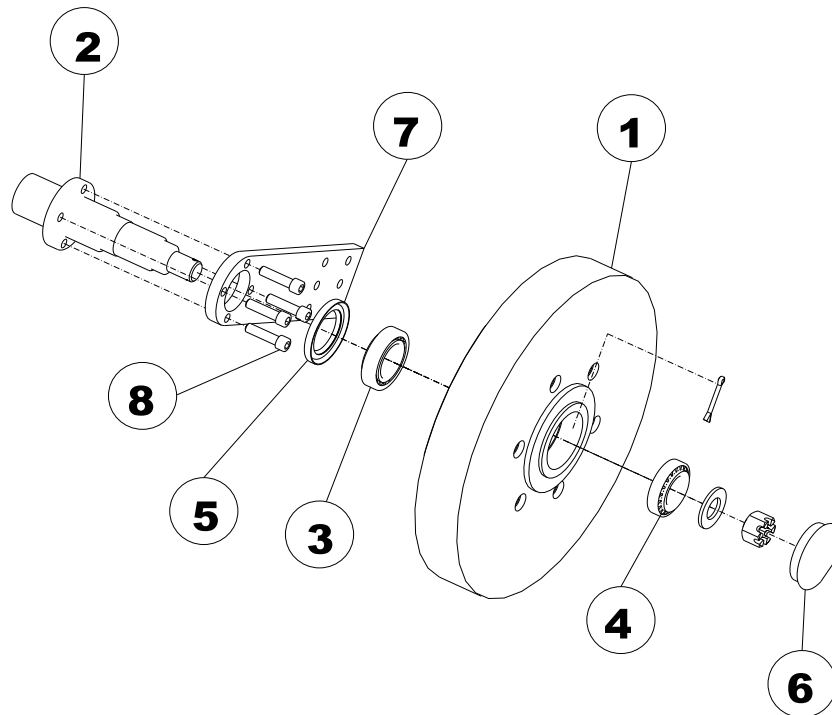
Coulter Blade Assembly

Item	Part No.	Description
1	335828	Pin Washer 1/2 SAE
2	502773	Coulter Blade
3	03223500	1/2-13 Metal Lock Nut
4	04562500	1/2-13 X 3 1/2



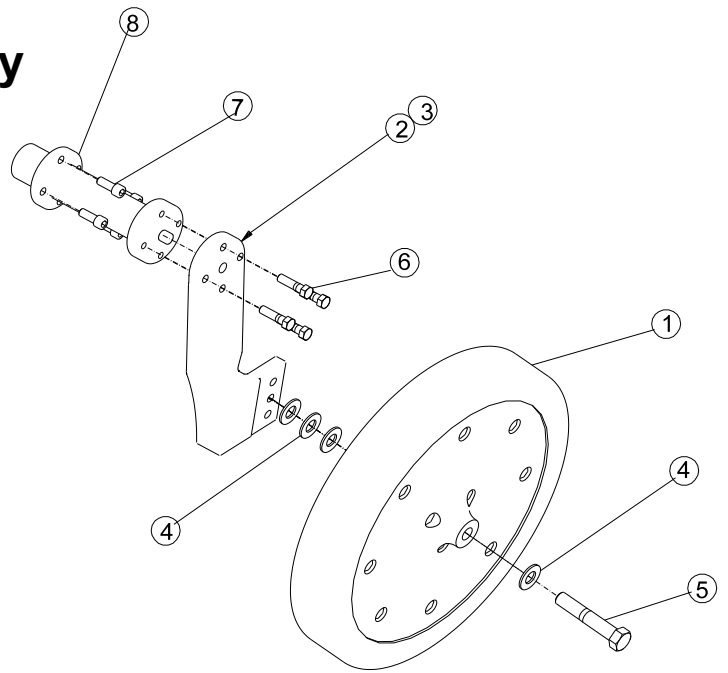
Hub Assembly

Item	Part No.	Description
1	551531	Hub Machined
2	315127	Hub Spindle 15"
	315184	Hub Spindle 20"
	315226	Hub Spindle 30"
3	404087	Inner Bearing
4	404095	Outer Bearing
5	404079	Axle Seal
6	404061	Dust/Grease Cap
7	315135	Blade Mounting Plate
8	340042	Screw 3/8 X 1.5" Socket Head



Cleaning Wheel Assembly

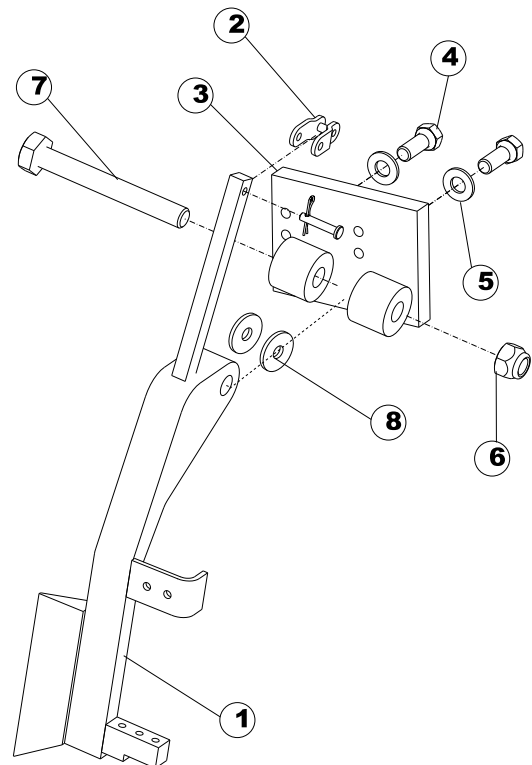
Item	Part No.	Description
1	572636	Gage Wheel AG Live
2	551614	Wheel Mount Machined Left
3	551622	Wheel Mount Machined Right
4	04563300	5/8 SAE Washer
5	01116300	HH 5/8 x 3 1/2 Gr 5
6	335703	Hex Bolt 3/8-16 UNC 1.5"
7	337998	SHCS 3/8-16 UNC 1.5"
8	315119	Wing Spool 15"
	315176	Wing Spool 20"
	315234	Wing Spool 30"



Knife Assembly 15"

884254 Right - 884247 Left

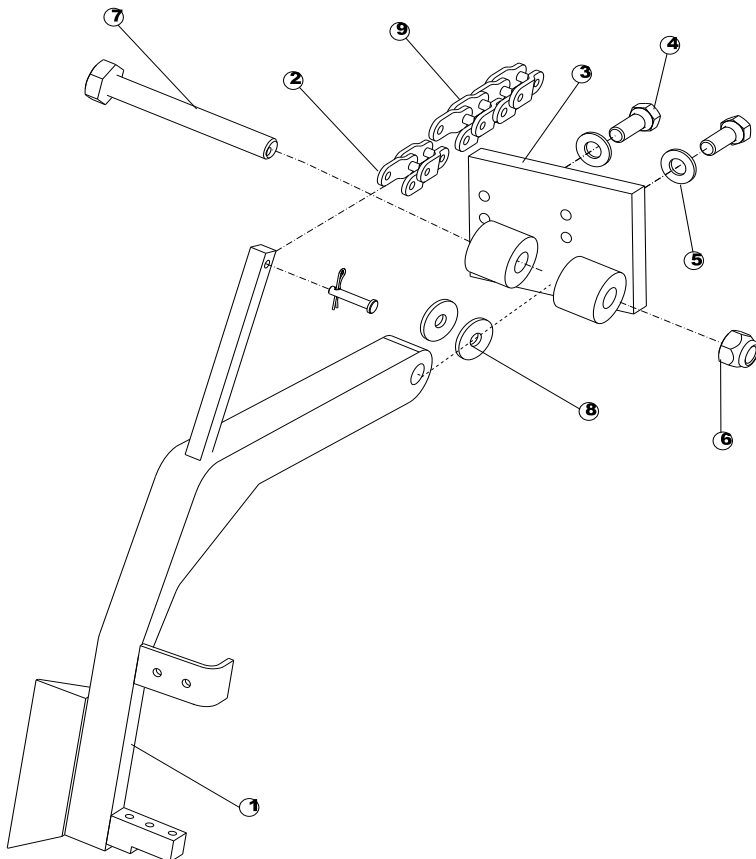
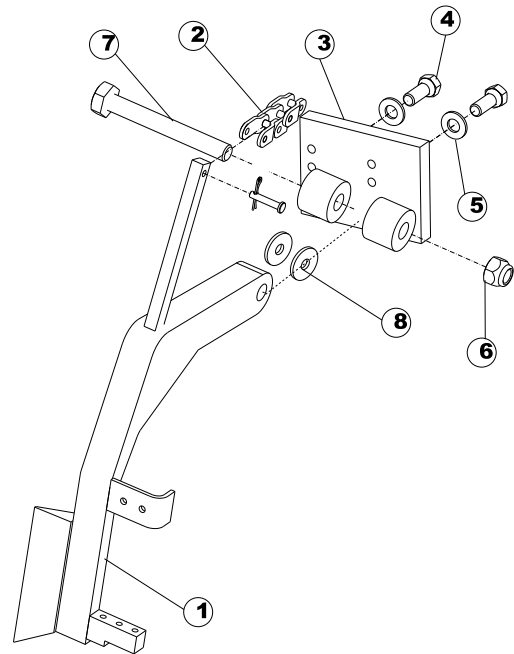
Item	Qty	Part No.	Description
1	1	982959	Knife WA Right
		982942	Knife WA Left
2	1	433862	Chain #50NP Offset Link
3	1	982975	Knife Hinge WA Right
		982967	Knife Hinge WA Left
4	2	01017300	HHCS .375 x 1.000 G5
5	2	330894	Flat Washer 3/8"
6	1	03223500	Nut .500 Lock G8
7	1	330092	Heavy Hex Blt 1 1/2-13 UNC 4
8	2	335828	Washer 1/2 SAE



Knife Assembly 20"

884288 Right - 884296 Left

Item	Qty	Part No.	Description
1	1	983015	Knife WA Right
		983023	Knife WA Left
2	3	431270	Chain 2050NP Offset Link
3	1	982975	Knife Hinge WA Right
		982967	Knife Hinge WA Left
4	2	01017300	HHCS .375 x 1.000 G5
5	2	330894	Flat Washer 3/8"
6	1	03223500	Nut .500 Lock G8
7	1	330092	Heavy Hex Blt 1/2-13 UNC 4
8	2	335828	Washer 1/2 SAE



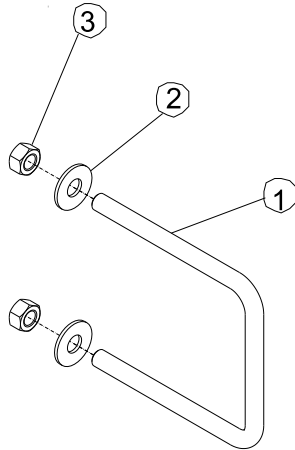
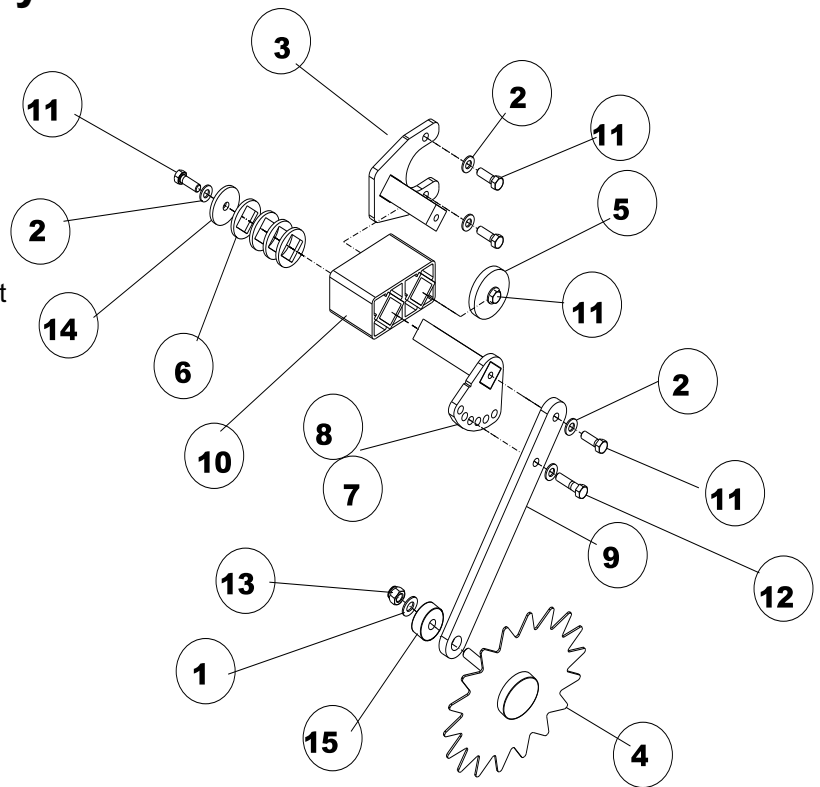
Knife Assembly 30"

884353 Right - 884346 Left
(FOR REPLACEMENT PARTS ONLY)

Item	Qty	Part No.	Description
1	1	983056	Knife WA Right
		983064	Knife WA Left
2	2	433862	Chain #50NP Offset Link
3	1	982975	Knife Hinge WA Right
		982967	Knife Hinge WA Left
4	2	01017300	HHCS .375 x 1.000 G5
5	2	330894	Flat Washer 3/8"
6	1	03223500	Nut .500 Lock G8
7	1	330092	Heavy Hex Blt 1 1/2-13 UNC 4
8	2	335828	Washer 1/2 SAE
9	4	431270	2050 Offset Link

Closing Wheel Assembly

Item	Part No.	Description
1	04563300	5/8 SAE Washer
2	335828	Pin Washer 1/2 SAE
3	982983	Wing Brkt WA 15"
	982991	Wing Brkt WA 20"
	983072	Wing Brkt WA 30"
4	884270	Closing Wheel Assy
5	32963100	End Cap
6	32962300	Spacer
7	983031	Pressure Plate WA Right
8	983049	Perssure Plate WA Left
9	32961500	Link
10	502807	Isolator Pressure Unit
11	01147800	HH 1/2-13 X1 1/2 Gr5
12	331926	HH 1/2-13 X 2 Gr5
13	337188	5/8 Metal Lock Nut
14	32965600	Spacers
15	644427	CRR 1.750 X .920

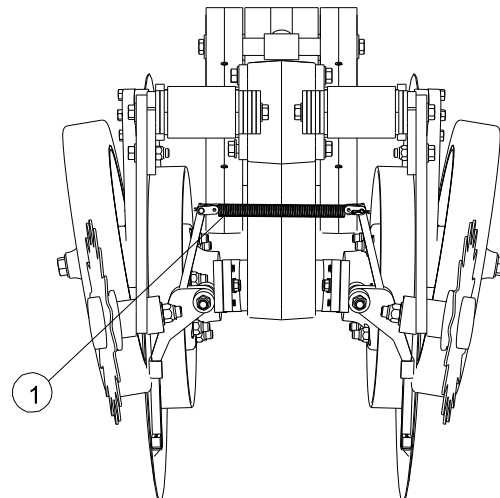


Square U-Bolt Assembly

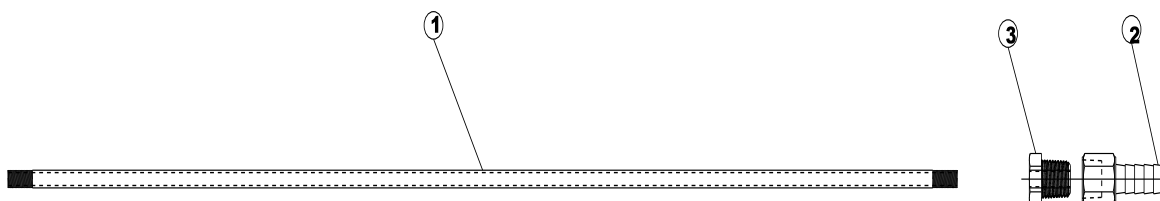
Item	Qty	Part No.	Description
1	2	315218	U-Bolt .750 X 7 X 9
	2	340000	U-Bolt .750 X 5 X 7
2	4	02176600	3/4 SAE Washer
3	4	339994	3/4 Suspension Nut

Tension Spring

Item	Qty	Part No.	Description
1	1	502799	Spring



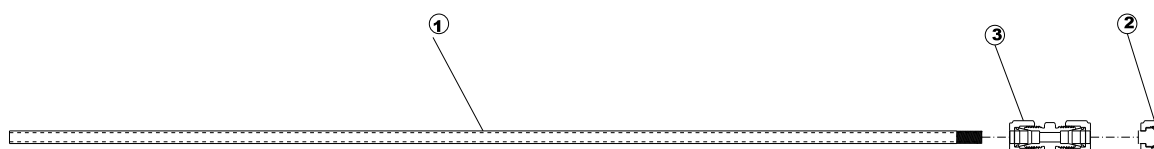
Application Tube Low PSI NH3/Phos



884387

Item	Qty	Part No.	Description
1	1	124891	TUBE-RD .250 X .065 X 19.500
2	1	04571600	PIPE ADAPT 1/4"FM TO 3/8" HOSE
3	1	340026	STEEL PIPE FITTING LOW-PRESS

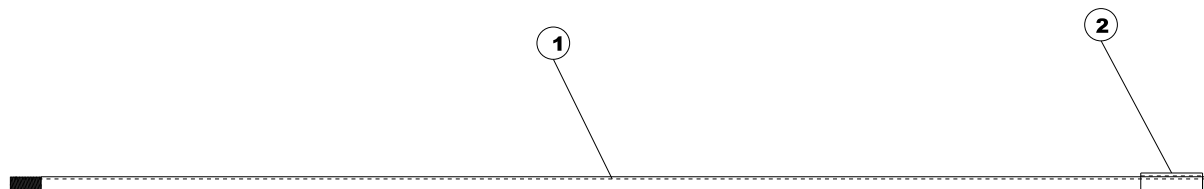
Application Tube NH3 High Pressure



884395

Item	Qty	Part No.	Description
1	1	124875	TUB-RD .25 X .065 X 19.500
2	1	04566600	CAP-1/4 TUBE YOR-LOK FITTING
3	1	04567400	YOR-LOK FITTING SS TUBING

Application Tube Low PSI Welded



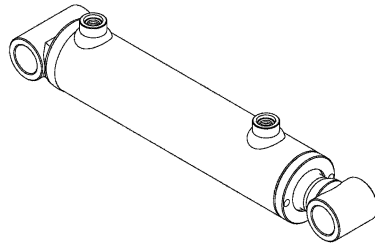
983080

Item	Qty	Part No.	Description
1	1	124875	TUB-RD .25 X .035 X 19.500
2	1	124883	TUB-RD .375 X .049W X 1.00 SS

Cylinder Seal Kit

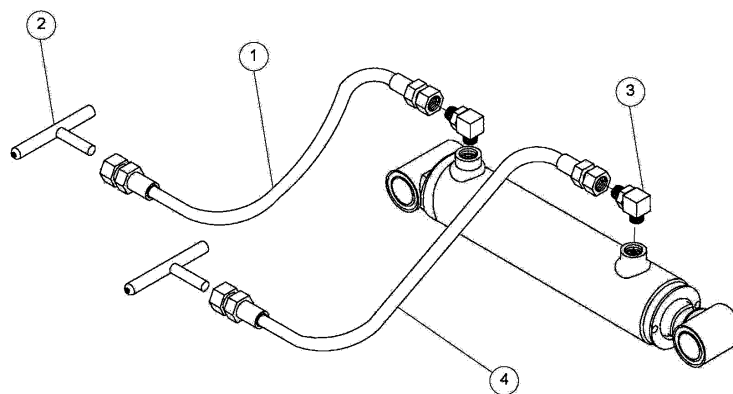
476044 CYL 2 X 6 - 1.25"ROD

476069 Cyl Seal Kit (Carlson #982004)



Hydraulics Hose & Fittings

7 x 7 U-Bolt



Item	Qty	Part No.	Description
1	1	469619	Hose .375 X 20 .563 FJSW /.75FSW
2	2	465278	Adpt Tee .750 JICM
3	2	00598300	Adpt 90D .563MOR / .563 JICM
4	1	476077	Hose .375 X 15 .563 FJSW /.75FSW



P.O.Box 526 • Spearville Kansas 67876 • (620) 227-7106 • crustbuster.com
