



P.O. Box 526 - Spearville, Kansas 67876 - (620) 227-7106
crustbuster.com

Seed Tote 4 Box

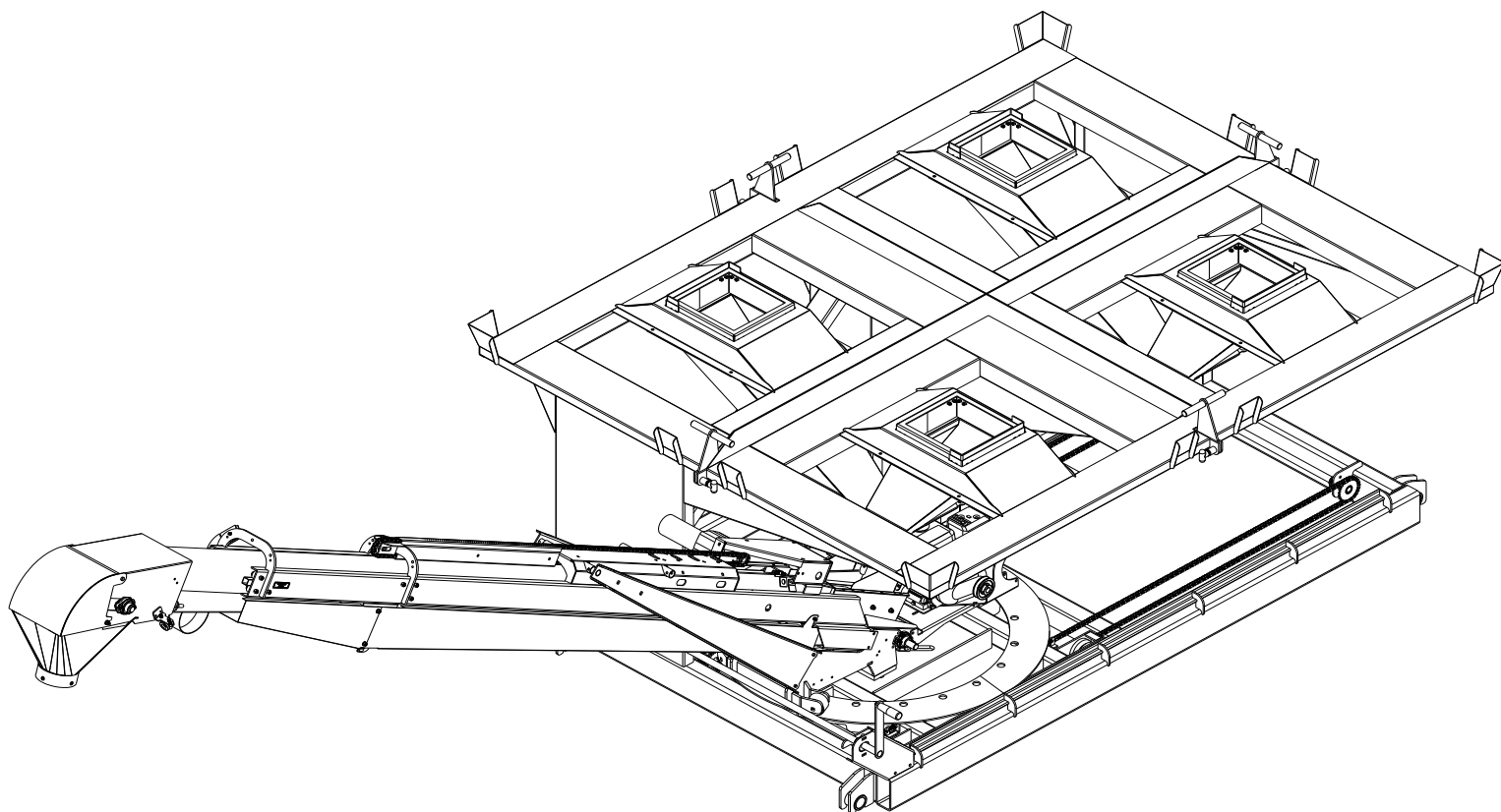


Table of Contents

Warranty Information	1
Operator Qualifications	2
Safety and Warnings	3-10
Operation, Maintenance & Belt Training	11-16

Repair Parts	
Seed Tote 4 Box	17-20
Telescoping Conveyor	21-26
Carriage Assembly	27
Hopper Assembly	27
Engine Assembly	28
Remote Assembly	29-30
Wiring Harness	31-32
Trailer Assembly	33-34

Identification

Your Seed Tote is identified by a Serial Number and Model Number. Record these numbers in the spaces provided in this manual and refer to them when ordering parts or requesting service.

Serial Number	Model Number

Warranty

WARRANTY: In addition to the implied warranties of fitness and of merchantability, CrustBuster®/Speed King, Inc. warrants new products sold by it to be free from defects in workmanship and material for a period of 12 months, from the date of delivery to the first user customer. Warranty on purchased parts (cylinder, blades, bearings, shanks, etc.) will be the same as that offered by the appropriate manufacturer of these parts.

EXCLUSIONS: No warranty of any kind is made by CrustBuster®/Speed King, Inc. with regard to new products which have been subject to operation in excess of recommended capacities, misuse, abuse, negligence, or accident, or have been altered or repaired in any manner not authorized by CrustBuster®/Speed King, Inc. CrustBuster®/Speed King, Inc. is constantly striving to improve its products. Changes in design and improvement will be made whenever CrustBuster®/Speed King, Inc. believes the efficiency of its products will be improved thereby, but without incurring any obligation to incorporate such improvements in any products which have been shipped or are in service. No obligation exists for compensation of unauthorized repairs or modifications without prior approval. And in no event will CrustBuster®/Speed King, Inc. be liable for consequential damages, such as but not limited to: downtime, delayed or late tillage or planting, etc.

WARRANTY REGISTRATION: This warranty is not valid unless registered with CrustBuster®/Speed King, Inc. within 10 days from the date of purchase. It is the sole responsibility of the selling retail dealer to fill out the registration forms and see that they are properly filed with CrustBuster®/Speed King, Inc. This can be done at crustbuster.com.

WARRANTY PROCEDURE: Should any part fail to conform with this warranty, CrustBuster®/Speed King, Inc. will repair or replace the part or parts which do not conform. If a part is defective, take it to your authorized CrustBuster® Farm Equipment Dealer immediately, along with your warranty registration, and complete the proper forms requesting a warranty adjustment. Our representative will pick up the part to be returned to the factory for examination. If the customer (first user) requests that a new part be substituted for the old part, a new part will be charged to the dealer who will in turn charge the customer. If the part is found by us to be defective, a credit for the part will be given to the dealer to be passed on to the customer. If the dealer or customer wishes to repair the part, this will be done only if authorized by CrustBuster®/Speed King, Inc. This warranty procedure is in addition to all remedies authorized by law.

CRUST BUSTER®/SPEED KING, INC.
Box 526
Spearville, KS 67876

Operator Qualifications

Operation of this Seed Tote shall be limited to competent and experienced persons. In addition, anyone who will operate or work around this equipment must use good common sense. In order to be qualified, he or she must also know and meet all other requirements, such as:

1. Some regulations specify that no one under the age of 16 may operate power machinery. It is your responsibility to know what these regulations are in your area or situation.
2. Current OSHA regulations state in part: "At the time of initial assignment and at least annually thereafter the employer shall instruct EVERY employee in the safe operation of servicing of all equipment with which the employer is, or will be involved."
3. Unqualified persons are to STAY OUT of the work area.
4. A person who has not read and understood all operating and safety instructions is not qualified to operate the machinery.



FAILURE TO READ THIS SEED TENDER MANUAL AND ITS SAFETY INSTRUCTIONS IS A MISUSE OF THE EQUIPMENT.



Sign Off Sheet

As a requirement of OSHA, it is necessary for the employer to train the employee in the safe operation and safety procedures with this Seed Tender. We include this sign off sheet for your convenience and personal record keeping.

DATE	EMPLOYER	EMPLOYER'S SIGNATURE



BE ALERT!

Your Safety is involved.



General Safety Statement

WATCH FOR THIS SYMBOL. IT POINTS OUT IMPORTANT SAFETY PRECAUTIONS. IT MEANS "ATTENTION — BECOME ALERT!"

YOUR SAFETY IS INVOLVED.

It is your responsibility as an owner, operator, or supervisor to know and instruct everyone using this Seed Tote at the time of initial assignment and at least annually thereafter, of the proper operation, precautions, and work hazards which exist in the operation of this Seed Tote in accordance with OSHA Regulations.

Safety Is No Accident

The following safety instructions, combined with common sense, will save your equipment from needless damage and the operator from unnecessary exposure to personal hazard. Pay special attention to the caution notes in the text. Review this manual at least once each year with new and/or experienced operators.



1. Read and understand the operator's manual before operating this Seed Tote. Failure to do so is considered a misuse of the equipment.
2. Make sure Seed Tote is secure before operating.
3. Always keep children away from Seed Tote when operating.
4. Make sure everyone that is not directly involved with the operation is out of the work area before beginning the operation.
5. Make sure all safety devices, shields, and guards are in place and are functional before beginning the operation.
6. Shut off power to adjust, service, or clean.
7. Keep hands, feet, and clothing away from moving parts. It is a good idea to remove all jewelry before starting the operation.
8. Visually inspect the Seed Tote periodically during operation for signs of excessive vibration, loose fasteners, and unusual noises.
9. Before transportation unit, make sure tube assembly is locked into place and safety strap is on and secure.
10. Keep box tote on level surface.

DANGER: Indicates an imminently hazardous situation which, if not avoided, will result in death or serious injury.



WARNING: Indicates a hazardous situation which, if not avoided, could result in death or serious injury.



CAUTION: Indicates a potentially hazardous situation which, if not avoided, may result in minor or moderate injury.



NOTICE: Used to address practices not related to physical injury.





CAUTION

1. Read and understand instruction manual before operating.
2. Keep all safety shields and devices in place.
3. Make certain everyone is clear before operating machine.
4. Keep hands, feet, and clothing away from moving parts.
5. Shut off power to adjust, service, or clean.
6. Make sure machine is secured before operating.
7. When transporting, shut fuel valve lever off.

Pre-Operation Check List

1. Check all bearings for proper lubrication.
2. Check the tube for foreign material.
3. Check all belts for proper tension.
4. Start unit and check tender belt alignment while unit is empty.

BELT CARE

It is suggested that the unit be run every two to three days or more often if possible. This tends to keep the tender belt alive and stops any forming of the belt to the curvature of the tube while the unit is not in use.

NOTE: Belt may deteriorate if not in use and exposed to weather conditions for any prolonged period of time.

Operation Sequence

1. Check drive belt for proper tension.
2. Make sure tender belt is properly tensioned.
3. Allow unit to run empty for a few minutes to flex tender belt.
4. Check tender belt for proper alignment.
5. Before shutting power off, be certain head and tail unit is empty.

STORAGE

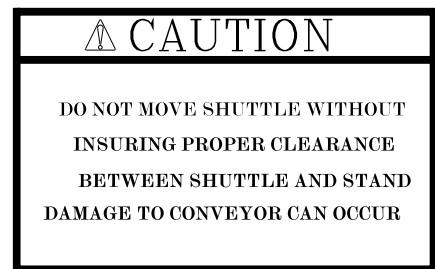
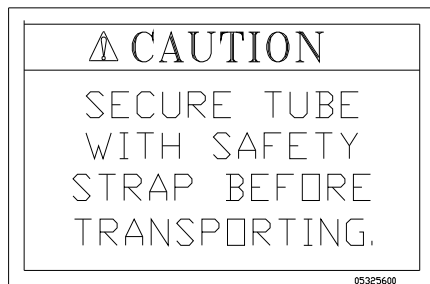
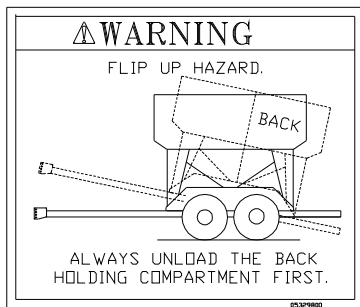
Temporary Storage

1. Relieve tension from all belts; both v-belt and tender belt.
2. Store all belt equipment in a dry place. If equipment cannot be stored out of the weather, cover engine and mechanical parts with waterproof material.

Prolonged Storage

1. Remove all belts and store in a cool, dark, dry place.
2. Wash belt thoroughly.
3. Wash tube both inside and out.
4. Lubricate all bearings.
5. Store in a dry shelter.

Operation Cautions

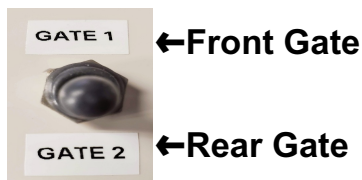


Operation Remote

- | | | |
|----------------|--|------------------|
| Belt On → | | ←Belt Off |
| Gate Close → | | ←Gate Open |
| Telescope In → | | ←Telescope Out |
| Rotate Rear → | | ←Rotate Forward |
| Shuttle Rear → | | ←Shuttle Forward |
| | | |



- Step 1:** Make sure conveyor has all transport locks removed.
- Step 2:** Rotate conveyor rearward until conveyor clears stand corner.
- Step 3:** Move shuttle rearward until conveyor is lined up with rear spout.
(Note: There are prox sensors that stop shuttle when all the way back.)
- Step 4:** Flip toggle switch located on remote box to the Gate 2 (rear gate).

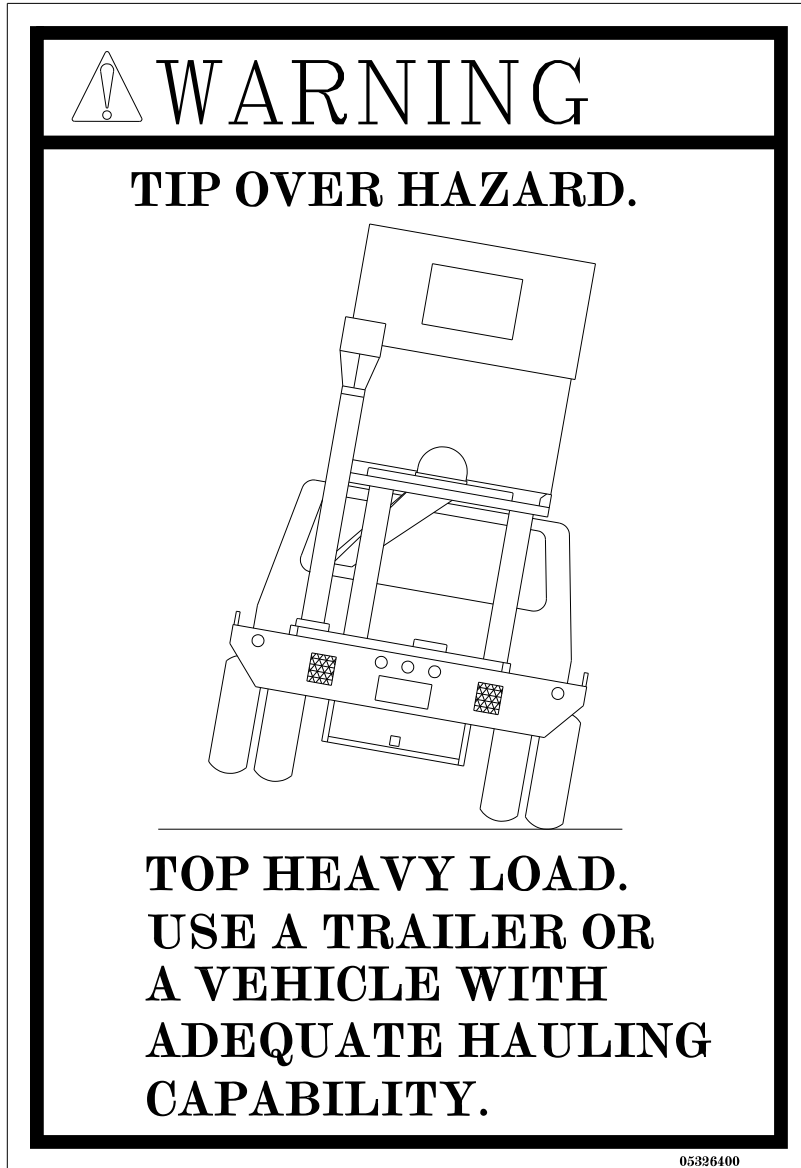


- Step 5:** Open tote box.
- Step 6:** Open gate to allow seed access to belt.
- Step 7:** Position spout to unit to be filled by using the rotate and telescoping buttons.
- Step 8:** Turn belt on and off as needed to fill unit. Once unit is full, close gate and run excess seed out of tube.
- Step 9:** Shut gate of pro box.
- Step 10:** Move shuttle to forward position.
- Step 11:** Rotate conveyor to forward position.
- Step 12:** Re-attach transport hooks.

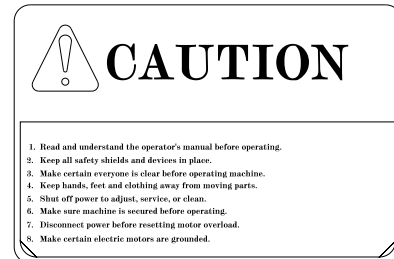
Safety Decals

REMEMBER: If Safety signs have been damaged, removed, become illegible or parts replaced without decals, new decals must be applied. New decals are available from your authorized distributor or factory. Individual decals shown below.

#05326400



#05303300



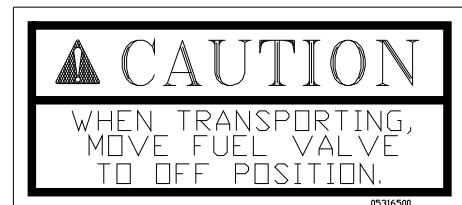
#05312400



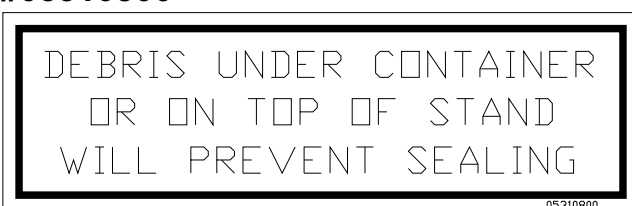
#05328000



#05316500

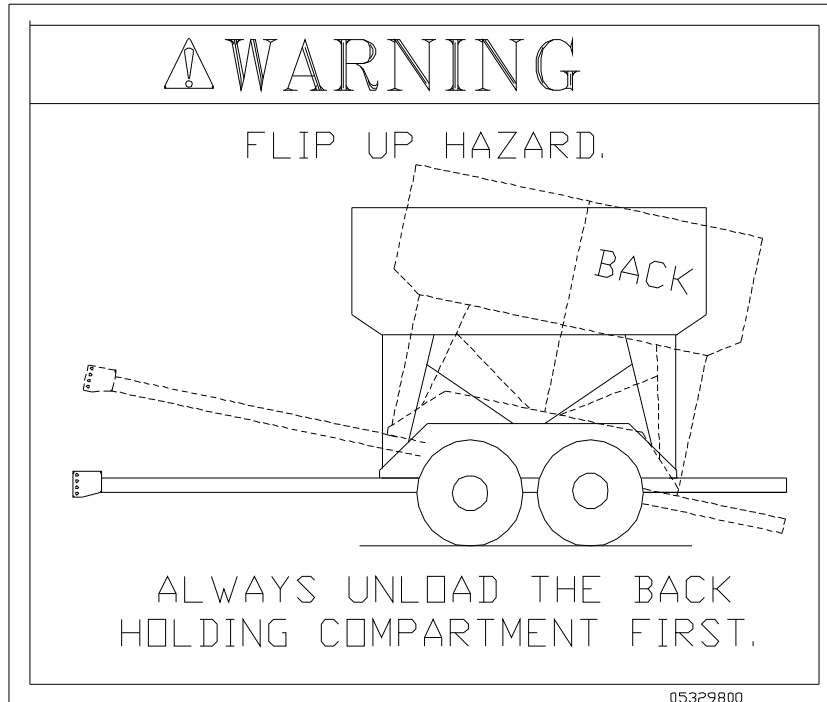


#05310800

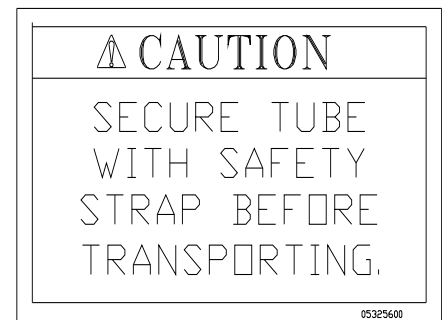


Safety Decals Cont'd

#05310800



#05325600



#05315700





Danger

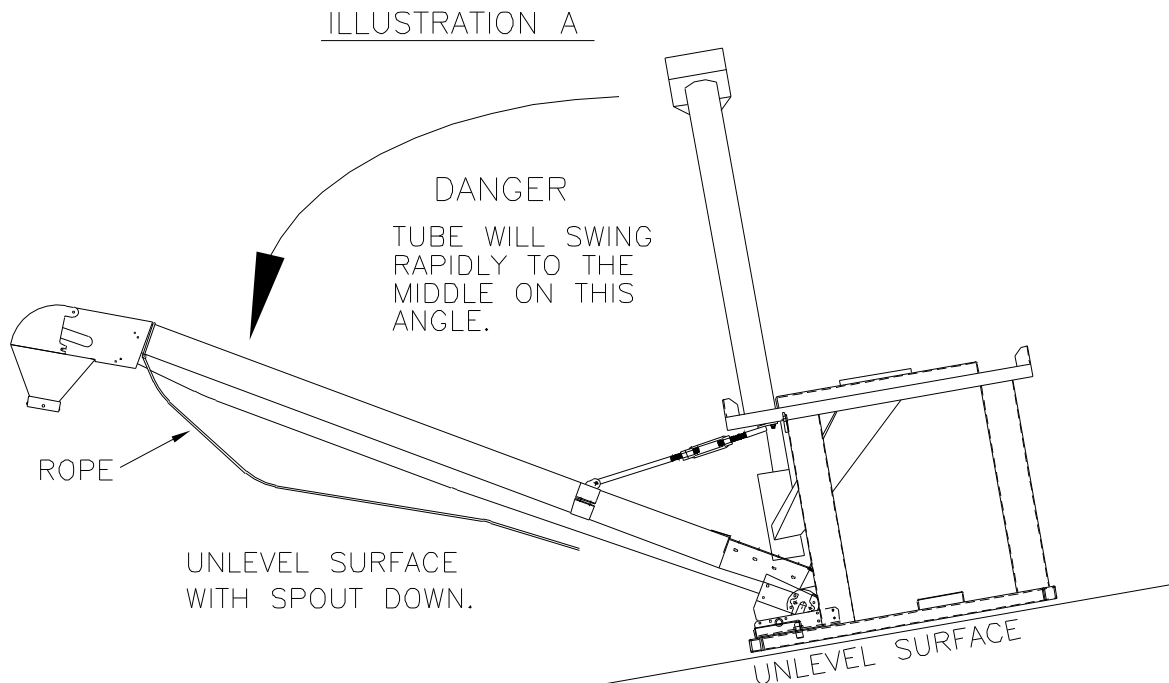
**BE ALERT! YOUR PERSONAL SAFETY IS INVOLVED.
ALWAYS PARK TENDER ON LEVEL SURFACE TO UNLOAD.**

Before releasing safety strap that secures tube assembly, make sure tender is sitting on a level surface.

If parked on an unlevel surface, and the tube assembly is not restrained, it could swing rapidly and out of control to one side or the other.

The rope attached to the tube is to assist in guiding the tube. If tube is swinging out of control, the rope may not control the tube.

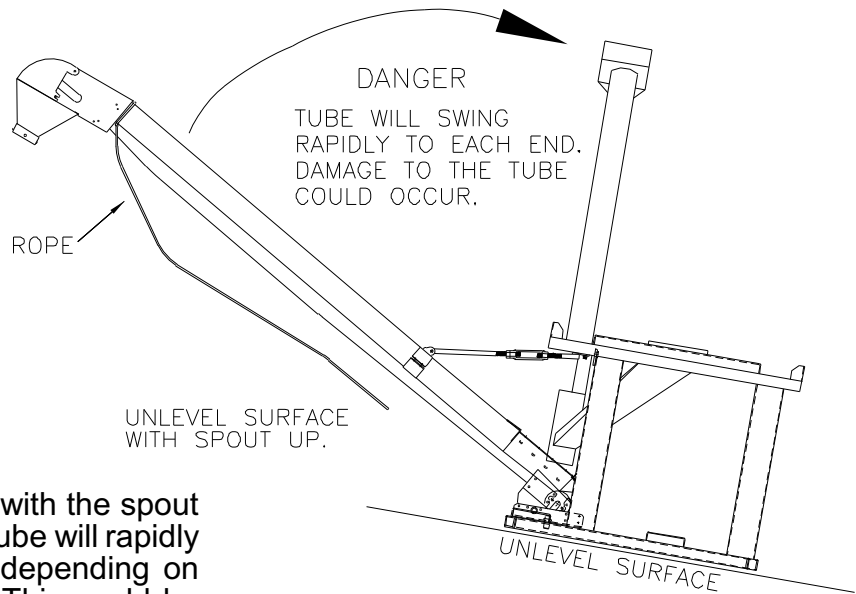
If parked on an unlevel surface with the spout side down, (See *illustration A*) the tube could rapidly swing out.





Danger

ILLUSTRATION B

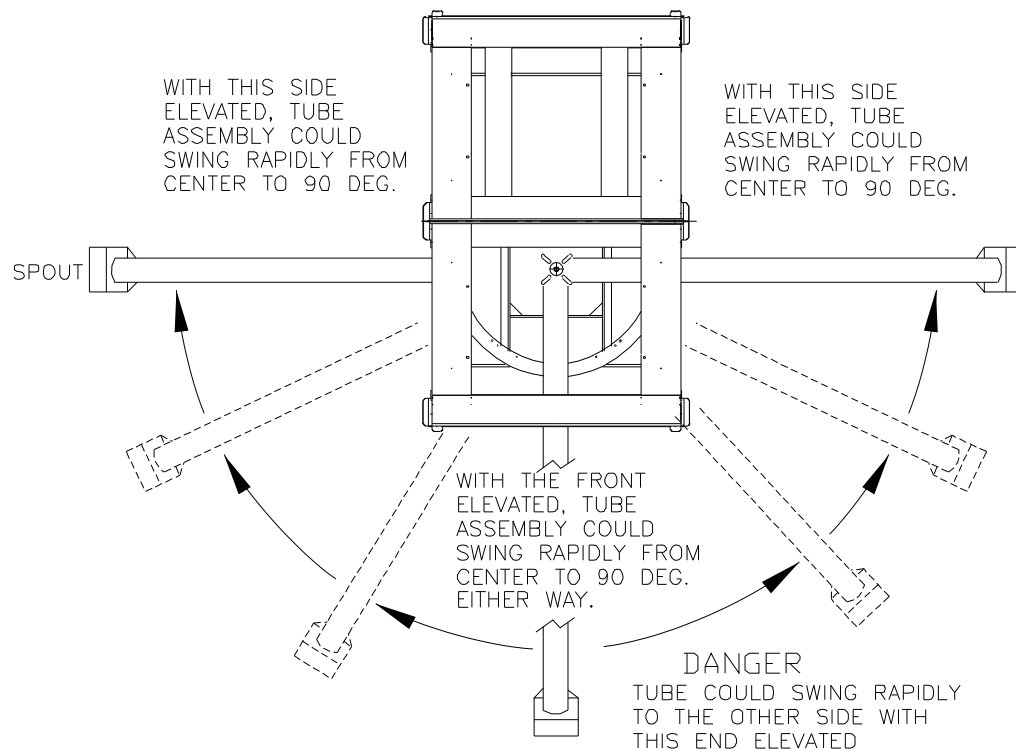


If parked on an unlevel surface with the spout side up, (See *illustration B*) the tube will rapidly swing to one end or the other depending on which side the gravity pulls it. This could be very hazardous for anyone standing in its path. Be very cautious of situation.

If parked on an unlevel surface with the spout side up, (See *illustration C*) the tube could rapidly swing from one end to the other.

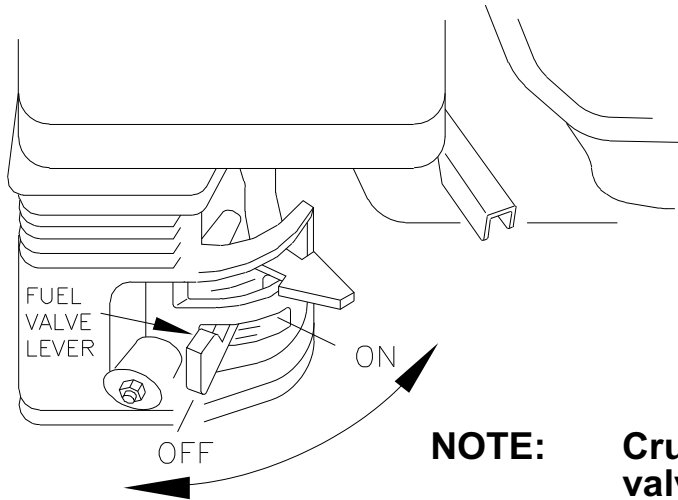
This could be very hazardous for anyone standing in its path. Be very cautious of this situation. This could also cause damage to the tube assembly.

ILLUSTRATION C





CAUTION



FUEL VALVE

When engine is not in use, leave the fuel valve lever in the OFF position to prevent

- carburetor flooding
- fuel in the oil crank case because of transporting vibrations
- the possibility of fuel leakage.

See engine owner's manual to help you avoid other damage to your engine.

NOTE:

Crust Buster recommends fuel valve be shut off and the motor run completely out of fuel before transporting.

Maintenance

Preventive maintenance is the key to the long life of any mechanical device.

Careful and systematic inspection of the Seed Tender will result in maximum, trouble-free service.

BELT REPLACEMENT

To replace the belt, cut it into and hand rotate the head roller until belt has been removed. Install appropriate belt as outlined in assembly instructions. (See page 6.)

HEAD ASSEMBLY TAKE-UP

After extended use, the belt may stretch to the point that there is not sufficient take-up in the head assembly to tighten it. Obtain additional take-up by cutting a 6" to 8" section from the belt. A new splice lacing may be ordered from your CrustBuster/Speed King distributor or from the factory.

PERIODIC CLEAN-OUT

Due to the characteristics of certain materials, residue sometimes collects between the tender belt and the tube. Check the unit periodically for any material build up in this area. If residue appears excessive, remove the tender belt and thoroughly wash the belt and tube. Allow belt and tube to dry before reinstalling the belt.

When the Seed Tender is not being used, secure belt to the tube to prevent belt from flopping in the wind, possibly breaking return idlers or ripping belt.

LUBRICATION

All bearings which are fitted with grease zerks should be lubricated at the conclusion of each operating day. Before greasing the bearings, make certain the zerks are free of dirt, otherwise this will be passed into the bearing race. If the unit will be out of service for a period of time, purge the bearings.

BELT TRAINING PROCEDURE

A belt correctly installed and trained will run straight and true. The belt must run centered on all terminal rollers, take-up rollers, and return idlers throughout the entire belt length.

Incorrect installation and training can result in severe edge damage, material spillage, material leakage through the skirt rubber at the loading point, and excessive power demands. Material spillage is the usual reason for belt carcass ruptures and pulley cover gouging and stripping, while leakage at the skirt rubber results in excessive conveyor cover wear under the skirts.

ALIGNMENT

All rotating parts -head roller, tail roller, and return idlers- must be at a 90 degree angle to the direction of belt travel, must be level, and the midpoint of each centered on a line when properly aligned.

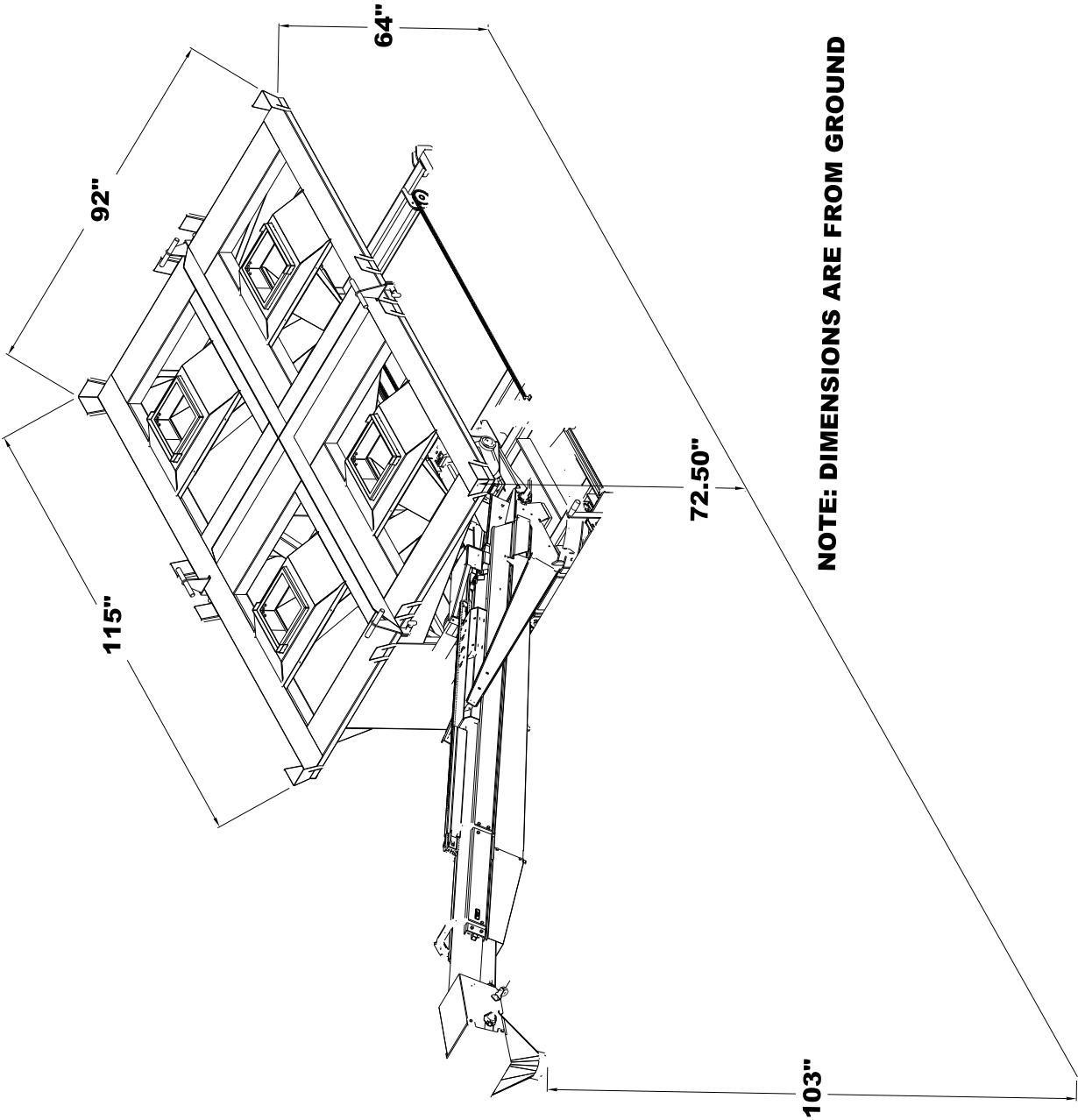
Alignment is checked by running a tight wire from the center of the head roller to the center of the tail roller.

Level all rotating parts. If a part is not level, the belt will run to the lower side.

BELT SPLICING

A belt must not run out at the splice area. Runout will occur if the belt is not cut square or splice is not installed square.

4 Box
Dimensions



NOTE: DIMENSIONS ARE FROM GROUND

Operation

1. Prior to the start-up, check to see that belt is free from any objects that would bind or tear.
2. On starting for the first time, with no load on belt, apply power for a few seconds only to see that the belt is well centered in the tube and on the return.
3. It should be noted at this time that too much tension on the belt will make adjustment or training much more difficult, shorten the life of the belt, and waste power. The belt should be tensioned tight enough so the drive roller does not slip.

BELT TRAINING

It is essential that the belt be properly trained at all times. For this reason, all rotating parts should always be at right angles to the tender belt.

Slight adjustment of roller shafts may be required to keep belts centered on them i.e., if the belt runs to one side of the roller - apply more tension to this side of the belt by advancing the roller shaft on this side. This can be done on the head section as long as adjustment bolt does not vary more than 1/4". If it does, then some adjustment will need to be done on the tail end.

If the belt tends to veer to one side of the return strand, the belt can be centered by "knocking" ahead (in the direction of belt travel) the end of the return idler to which the belt runs. A belt correctly installed will usually train well both empty and loaded, except as noted:

1. One or more rotating parts not in alignment.
2. Belt tensions in some part of system (usually at tail section) are below minimum recommended.
3. Belt not loaded centrally.

When a belt is initially started, it should be jogged around the system to determine if a major runout occurs which could damage belt and belt edges. If runout occurs at some point of the system, the reason is usually a return idler or roller out of alignment before the runout. Alignment should be rechecked before restarting.

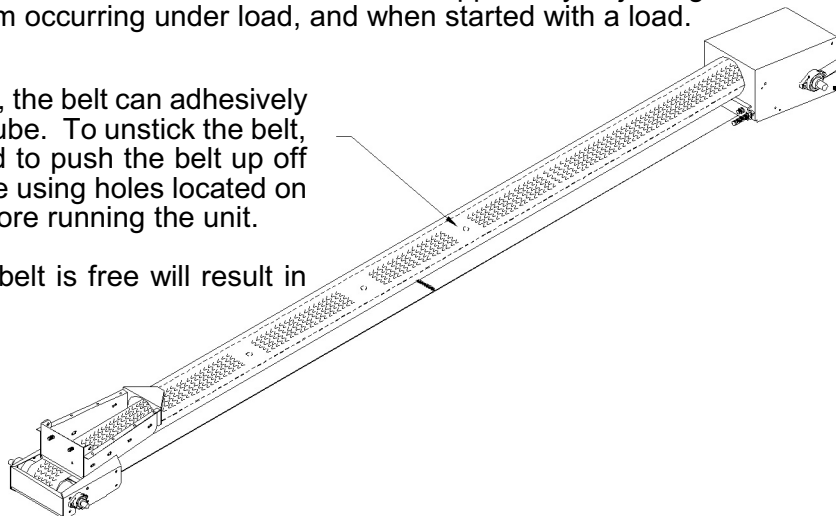
After the belt can be safely run without damage, final training should begin with the head roller. The belt must enter the head roller in the center without movement from side to side. If the belt is not centered on the tail pulley, the return strand of belt should be observed for any section which is not centered on the return idlers. If the belt is not centered at some point, move return idlers starting before this point to correct centering of belt. Movement of idler bracket should be gradual and only 1/16" to 1/8" remembering that the belt will move in the direction that it first contacts the idler. The same corrective action should be taken at the tail roller.

After the belt is trained empty, the belt should be trained with a load. The take-up adjustments are made to prevent belt slip and keep tensions at all points above minimums recommended when belt is operating with a load.

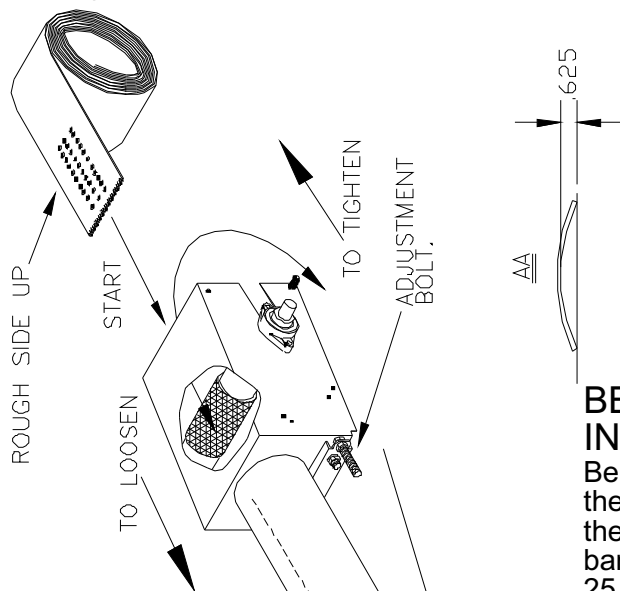
If slip occurs under load, additional belt tension should be applied by adjusting the take-up only enough to prevent slip from occurring under load, and when started with a load.

Through the down periods, the belt can adhesively stick to the bottom of the tube. To unstick the belt, use a screwdriver or a rod to push the belt up off the bottom of the feed tube using holes located on the bottom of the tube before running the unit.

Failure to make sure the belt is free will result in belt failure.



Belt Assembly



BELT TIGHTENING INSTRUCTIONS

Belt should be tightened before you train the belt. Tightening the belt is done on the head roller by tightening the take up bars evenly. Belt is tight when applying 25 lbs. of force, centered between the return rollers, there is no more than 2 inches of deflection.

BELT ASSEMBLY INSTRUCTIONS

At the start point, see view of head and tail assembly. Drop belt over the top of head roller and gravity feed belt down the tender tube to the bottom. Guide the belt over the top of the tail roller. Make sure rough side is UP and the smooth side is DOWN against the inside of wall of the tube.

Route both ends around head and tail rollers and over all return idlers mounted under the tube. Slide belt forward or back through tube so the ends of the belt meet at a convenient location between return idlers to facilitate joining.

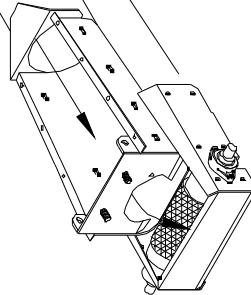
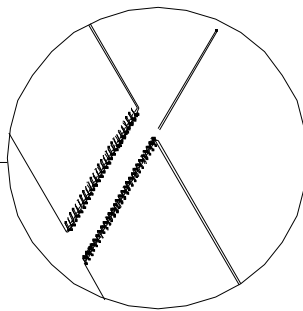
Align and interlace belt and clipper lacings. Slip splice pin (Plastic covered cable) through clipper lacings to secure.

FOR FERTILIZER USE ONLY

Apply rubber adhesive, from tube furnished, to both sides of clipper lacing. This is not done at the factory before shipping. Smooth adhesive and allow to set in accordance with package directions. This rubber adhesive secures splice pin in place and seals, so fertilizer dust does not settle on back side of belt and cause inside of tube to rust.

Tighten belt by turning adjustment bolts on head assembly in. Tighten evenly on each side until belt is tight.

To train belt, see belt training instructions in this manual.



Assembly

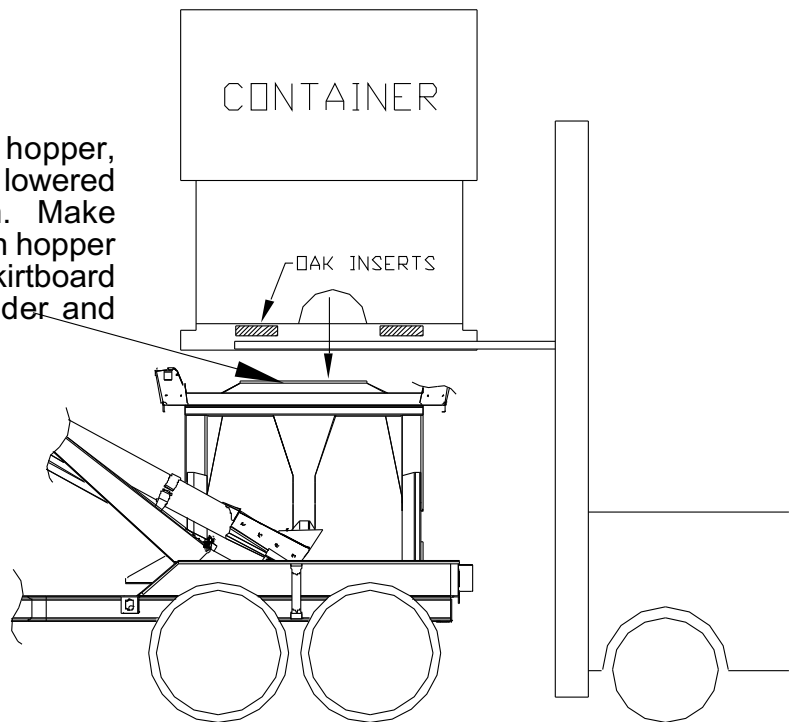


CAUTION

ALWAYS LIFT THE CONTAINER FROM THE BOTTOM. NEVER USE STRAPS OR LIFT BY TYING ANYTHING TO THE SIDES OF THE CONTAINER. REQUIRES MINIMUM 3000 LB. FORKLIFT TO PICK UP FULL CONTAINER. OAK INSERTS, LOCATED IN THE BASE OF THE CONTAINER, REDUCE LIPPAGE ON FORKLIFT FORKS AND PROVIDE STRUCTURAL SUPPORT.

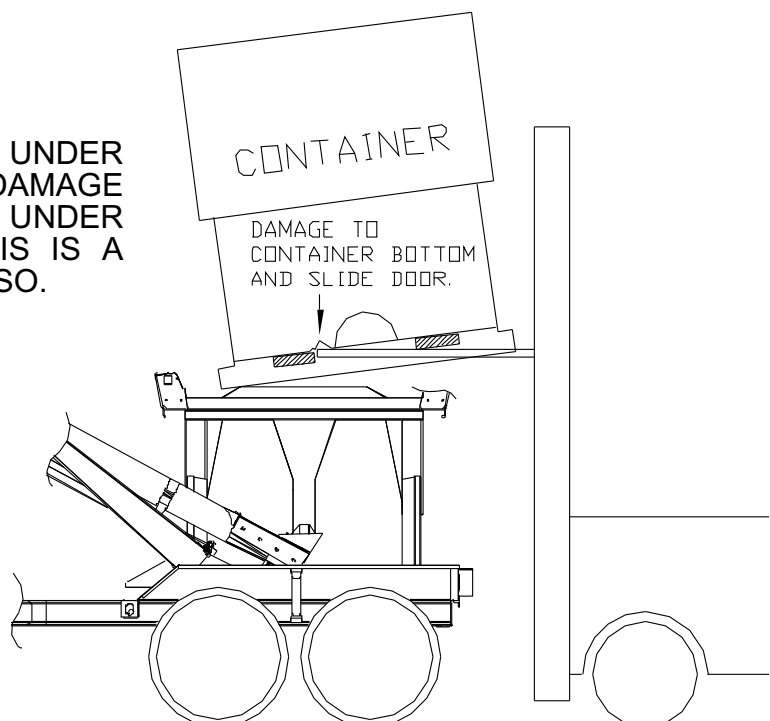
NOTE:

For proper seal to hopper, container should be lowered straight down as shown. Make sure there is no debris on hopper top. Make sure rubber skirtboard deflector is not bent under and preventing a good seal.



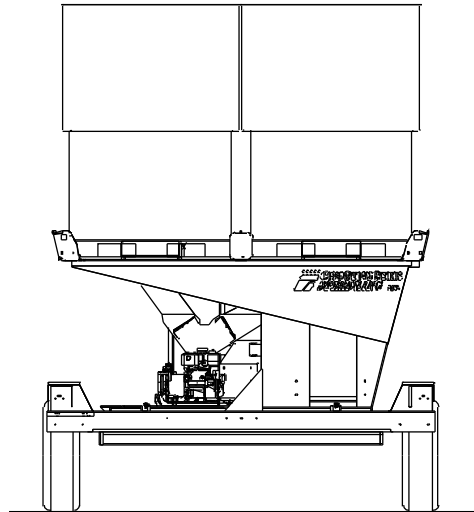
CAUTION

FAILURE TO EXTEND FORKS UNDER OAK INSERTS WILL CAUSE DAMAGE TO SLIDE DOOR ON THE UNDER SIDE OF CONTAINER. THIS IS A DANGEROUS SITUATION ALSO.



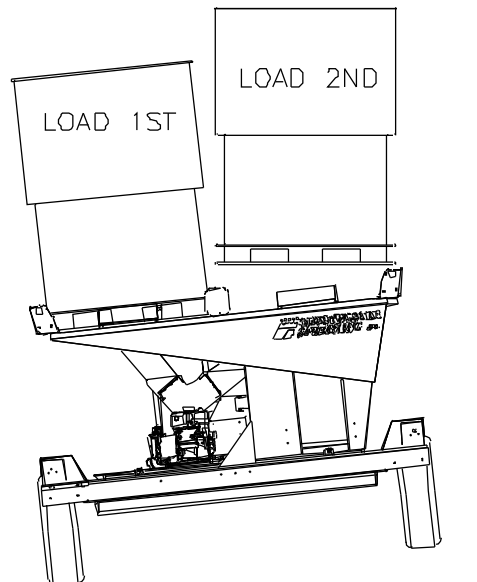
Seed Box Loading

TO LOAD SEED BOXES, THE TOTE SHOULD BE ON LEVEL GROUND OR SURFACE AS SHOWN.



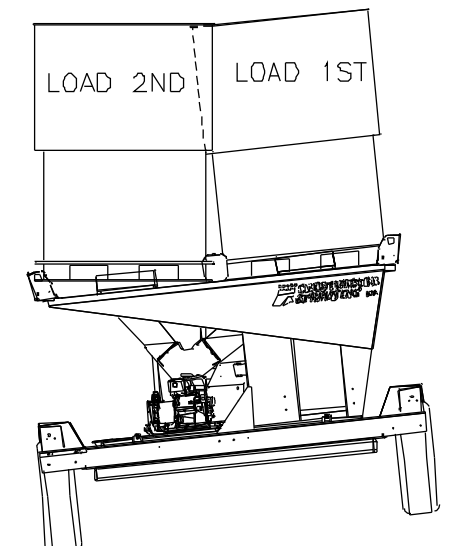
IF IT IS NOT POSSIBLE TO LOAD ON A LEVEL SURFACE, LOAD THE DOWN HILL CONTAINER FIRST, AS SHOWN.

THIS IS THE RIGHT WAY!

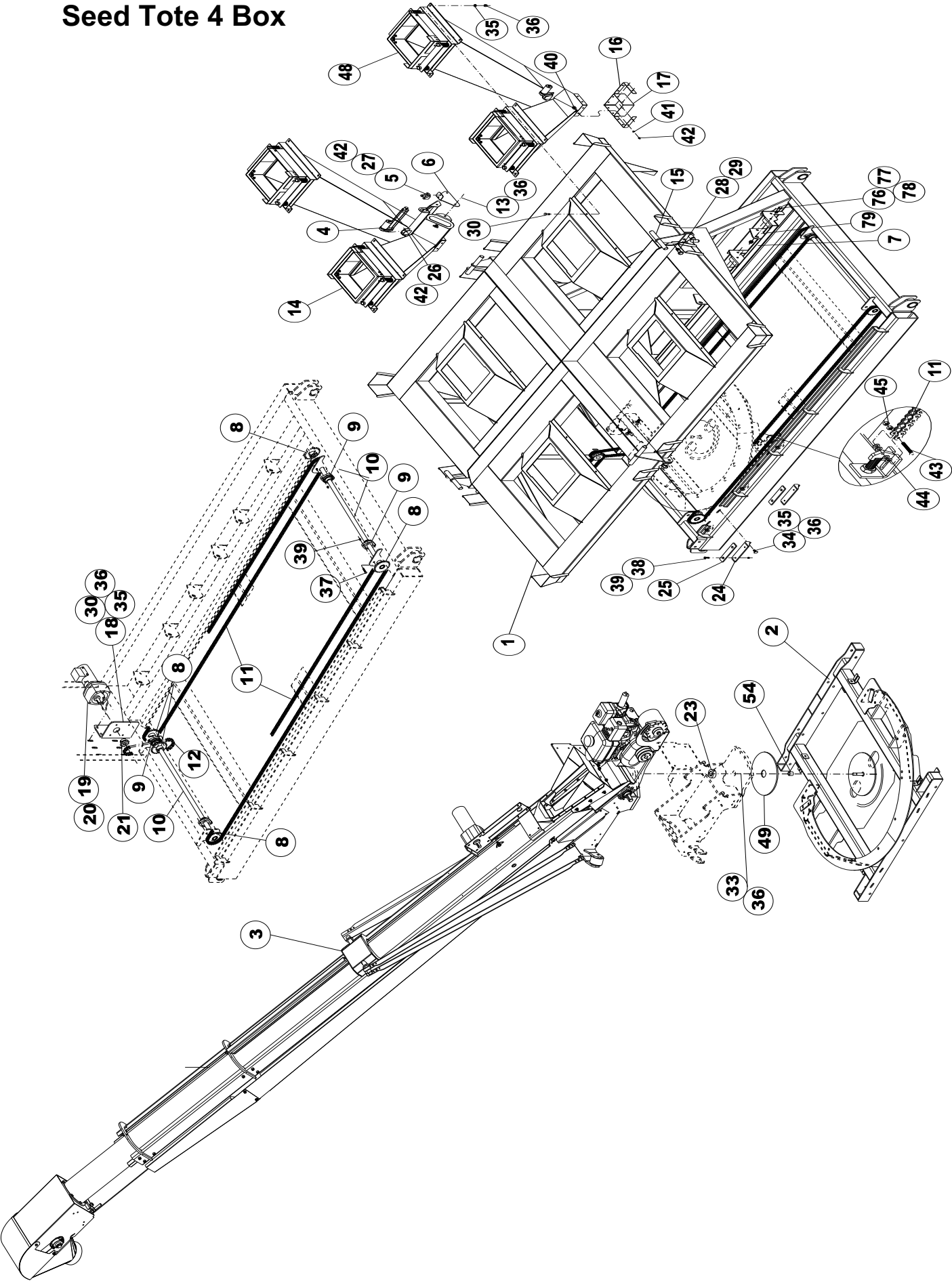


IF YOU LOAD THE UP HILL BOX FIRST, IT WILL BE VERY DIFFICULT TO GET THE SECOND BOX LOADED.

THIS IS THE WRONG WAY!



Seed Tote 4 Box



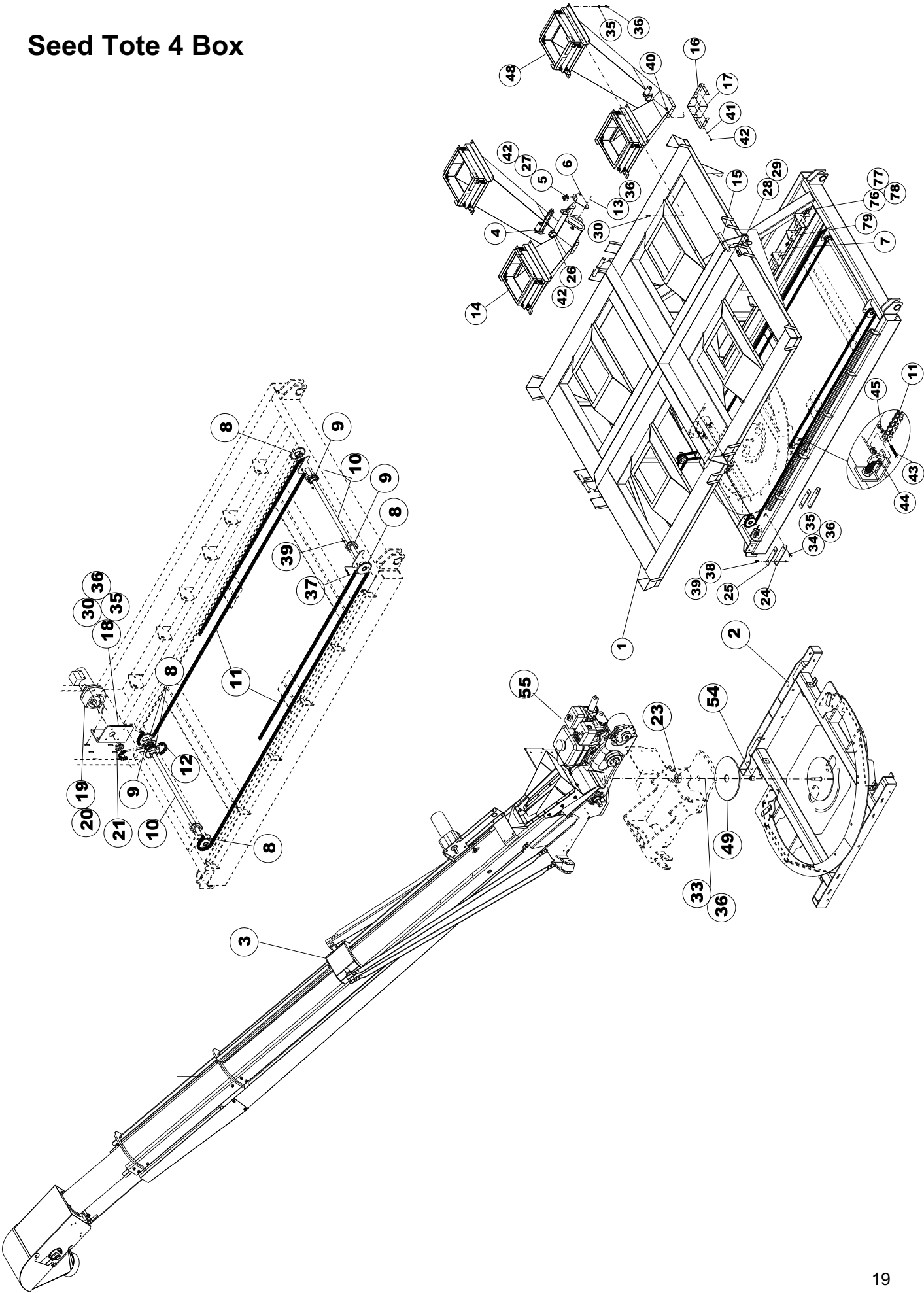
Seed Tote 4 Box

#90926700 4 Box Seed Tote

Item	Qty	Part No.	Description
1	1	82947300	Stand
2	1	63185300	Conveyor Carriage
3	1	63186100	Telescoping Conveyor
4	2	04396800	Actuator
5	2	04398400	Actuator Bracket W/Pin
6	2	32473100	Actuator Mount Rear
7	1	83347500	Top Track
8	5	970897	Sprocket #40-24T-1" Hub
9	4	03001500	Bearing 1" Flange
10	2	31017700	Shaft 1" x 36 15/16
11		709501	Chain #40 2 pc -343 Links
12	1	434209	Chain #40 x 63 Pitches
13	4	01145200	HHCS .375 X .75
14	2	63187900	Hopper Assembly Rear
15	4	82953100	Lock Down
16	4	31029200	Sock Plate
17	2	04189700	Sock
18	1	32474900	Motor Mount
19	1	03881000	Motor 12V
20	4	01057900	HHCS .250 X .75
21	1	434225	Sprocket # 40-10T
22	1	63394100	Remote Assembly
23	1	123448	Tube Rd 2 X 1.010 X .938
24	2	82954900	Front Hold Down
25	2	31037500	Nylon Guide
26	2	331843	HHCS .250 X 1.5
27	4	331835	Crank Handle
28	4	01147800	Bolt 1/2" x 1 1/2"
29	4	331363	Nylock 1/2"
30	20	01017300	Bolt 3/8" x 1"
31	10	01158500	Bolt 3/8" x 1 1/4"
32	1	153478	Lock Collar 1" ID
33	1	331884	HHCS .375 x 2.5
34	4	335919	Carriage Bolt 3/8" x 1 1/4"
35	24	330894	Flat Washer 3/8"
36	39	330837	Nylock 3/8"
37	8	01261700	Carriage Bolt 5/16" x 1 1/2"
38	4	03683000	Screw 5/16 x 1 Flat Head
39	13	331611	Nylock 5/16"
40	16	337949	Carriage Bolt 1/4" x 3/4"
41	24	02016400	Flat Washer 1/4"
42	22	330522	Nylock 1/4"
43	4	01165000	Screw #8-32 x 1 1/4 Round Head

Item	Qty	Part No.	Description
44	16	02692200	Flat Washer #10
45	8	01166800	Hex Nut #8-32
46	1	02440600	HHCS .313 x 2.25
47	2	04429700	Cable Hose Carrier Flex
48	1	63423800	Hopper Assy Front
49	1	04477600	Plastic 9" OD .250" Disk
50	1	04480000	Mounting Kit
51	1	610899	Harness 160
52	2	32668600	Sht 12GA 2.396 x 5.560
53	1	03879400	Prox Switch 4Wire
54	1	32731200	TubeRd 1.50 x .250 x .625
55			
56	1	616813	Spur Gear 12T 20Deg
57	1	883892	Foward Lockout Assy
58	1	982371	Motor Mount WA
59	1	334425	Klik Pin .438 W/2" Ring
60	11	330035	Nut .375 Lock
61	11	330043	Washer .375 Lock
62	1	32848400	Plt .250 x 6.28 x 8.298
63	1	32847600	Plt .250 x 8.29 x 11.03
64	3	01180900	HHCS .500 x 1.250 G5
65	3	330134	Nut .500 Hex
66	3	330159	Washer.500 Flat
67	3	330142	Washer .500 Lock
68	8	330050	Washer .250 Lock
69	8	04538500	HHCS .250 x .750
70	1	84747500	4Box Swivel Hold Down WA
71			
72	4	401042	Brg Double Disc Opener
73	2	336305	HHCS .625 x 2.750 G5
74	2	01572700	Nut .625 Hex Nylock
75	5	335703	HHCS .375 x 1.500 G5
76	12	330159	Washer .500 Flat
77	12	01029800	HHCS .500 x 1.00 G5
78	12	331363	HHCS .500 x 1.00 G5
79	1	32862500	Sht 12GA x 4.79 x 80.00
80	1	616821	Wiring Harness Box PowerLead
81	2	616839	Wiring Harness Box Rel/Rotate
82	1	616847	Wiring Harness Box Shuttle
83	2	616854	Wiring Harness Box Gates
84	6	03880200	Prox Cable 12'
85	1	976464	Belt Guard
86	1	976498	Belt Guard Rear WA
87	1	32885600	Actuator Mount Rear

Seed Tote 4 Box

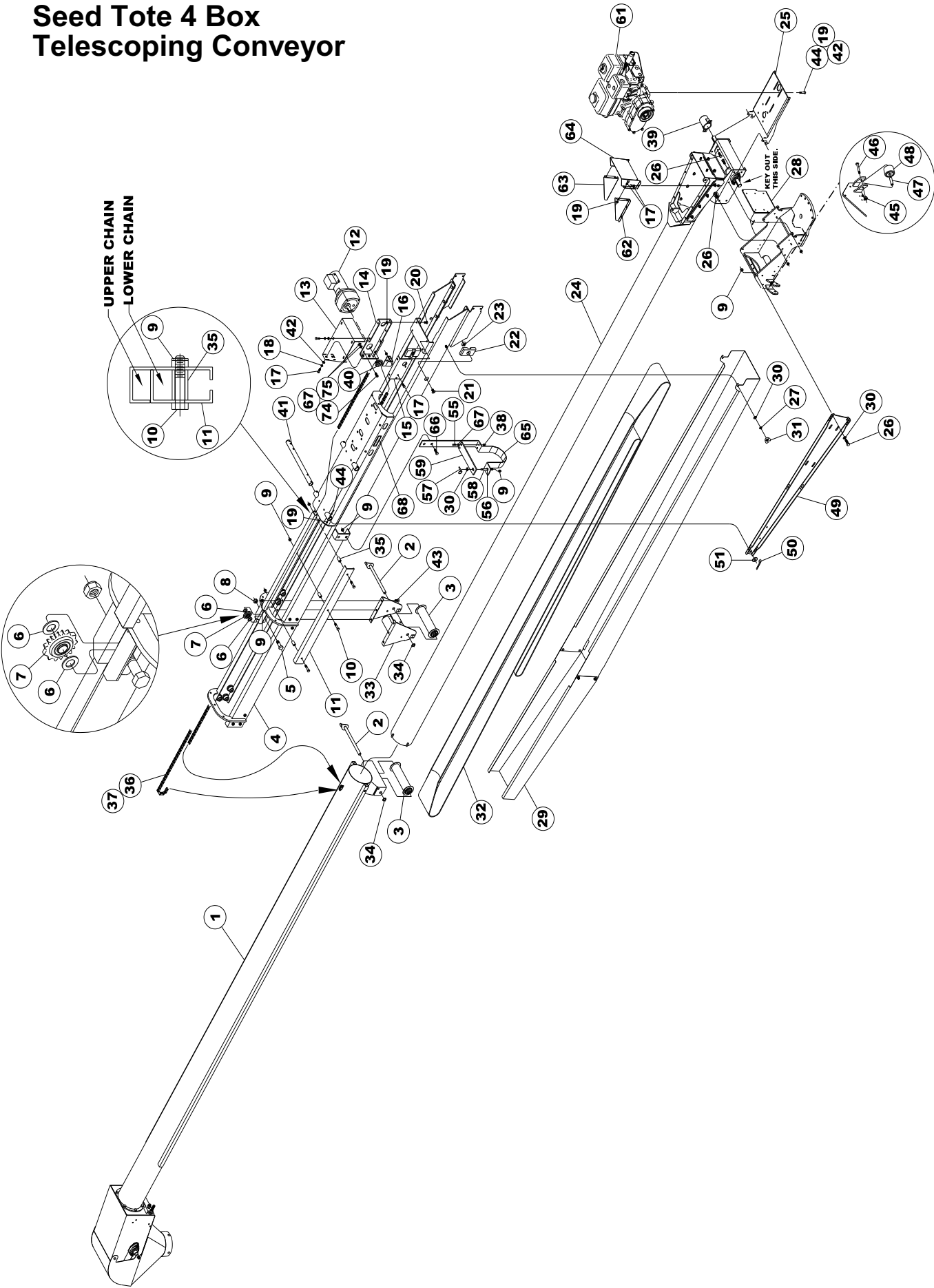


Seed Tote 4 Box

#90928000 4 Box Seed Tote

Item	Qty	Part No.	Description	Item	Qty	Part No.	Description
1	1	82947300	Stand	44	16	02692200	Flat Washer #10
2	1	63185300	Conveyor Carriage	45	8	01166800	Hex Nut #8-32
3	1	883835	Telescoping Conveyor	46	1	02440600	HHCS .313 x 2.25
4	2	04396800	Actuator	47	2	04429700	Cable Hose Carrier Flex
5	2	04398400	Actuator Bracket W/Pin	48	1	63423800	Hopper Assy Front
6	2	32473100	Actuator Mount	49	1	04477600	Plastic 9" OD .250" Disk
7	1	83347500	Top Track	50	1	04480000	Mounting Kit
8	5	970897	Sprocket #40-24T-1" Hub	51	1	610899	Harness 160
9	4	03001500	Bearing 1" Flange	52	2	32668600	Sht 12GA 2.396 x 5.560
10	2	31017700	Shaft 1" x 36 15/16	53	1	03879400	Prox Switch 4Wire
11		709501	Chain #40 2 pc -343 Links	54	1	32731200	TubeRd 1.50 x .250 x .625
12	1	434209	Chain #40 x 63 Pitches	55	1	63046700	Engine Assy
13	4	01145200	HHCS .375 X .75	56	1	616813	Spur Gear 12T 20Deg
14	2	63187900	Hopper Assembly Rear	57	1	883892	Foward Lockout Assy
15	4	82953100	Lock Down	58	1	982371	Motor Mount WA
16	4	31029200	Sock Plate	59	1	334425	Klik Pin .438 W/2" Ring
17	2	04189700	Sock	60	11	330035	Nut .375 Lock
18	1	32474900	Motor Mount	61	11	330043	Washer .375 Lock
19	1	03881000	Motor 12V	62	1	32848400	Plt .250 x 6.28 x 8.298
20	4	01057900	HHCS .250 X .75	63	1	32847600	Plt .250 x 8.29 x 11.03
21	1	434225	Sprocket # 40-10T	64	3	01180900	HHCS .500 x 1.250G5
22	1	63394100	Remote Assembly	65	3	330134	Nut .500 Hex
23	1	123448	Tube Rd 2 X 1.010 X .938	66	3	330159	Washer.500 Flat
24	2	82954900	Front Hold Down	67	3	330142	Washer .500 Lock
25	2	31037500	Nylon Guide	68	8	330050	Washer .250 Lock
26	2	331843	HHCS .250 X 1.5	69	8	04538500	HHCS .250 x .750
27	4	331835	Crank Handle	70	1	84747500	4Box Swivel Hold Down WA
28	4	01147800	Bolt 1/2" x 1 1/2"	71			
29	4	331363	Nylock 1/2"	72	4	401042	Brg Double Disc Opener
30	20	01017300	Bolt 3/8" x 1"	73	2	336305	HHCS .625 x 2.750 G5
31	10	01158500	Bolt 3/8" x 1 1/4"	74	2	01572700	Nut .625 Hex Nylock
32	1	153478	Lock Collar 1" ID	75	5	335703	HHCS .375 x 1.500 G5
33	1	331884	HHCS .375 x 2.5	76	12	330159	Washer .500 Flat
34	4	335919	Carriage Bolt 3/8" x 1 1/4"	77	12	01029800	HHCS .500 x 1.00 G5
35	24	330894	Flat Washer 3/8"	78	12	331363	HHCS .500 x 1.00 G5
36	39	330837	Nylock 3/8"	79	1	32862500	Sht 12GA x 4.79 x 80.00
37	8	01261700	Carriage Bolt 5/16" x 1 1/2"	80	1	616821	Wiring Harness Box
38	4	03683000	Screw 5/16 x 1 Flat Head				PowerLead
39	13	331611	Nylock 5/16"	81	2	616839	Wiring Harness Box
40	16	337949	Carriage Bolt 1/4" x 3/4"				Rel/Rotate
41	24	02016400	Flat Washer 1/4"	82	1	616847	Wiring Harness Box Shuttle
42	22	330522	Nylock 1/4"	83	2	616854	Wiring Harness Box Gates
43	4	01165000	Screw #8-32 x 1 1/4 Round Head	84	6	03880200	Prox Cable 12'
				85	1	976464	Belt Guard
				86	1	976498	Belt Guard Rear WA
				87	1	32885600	Actuator Mount Rear

Seed Tote 4 Box
Telescoping Conveyor



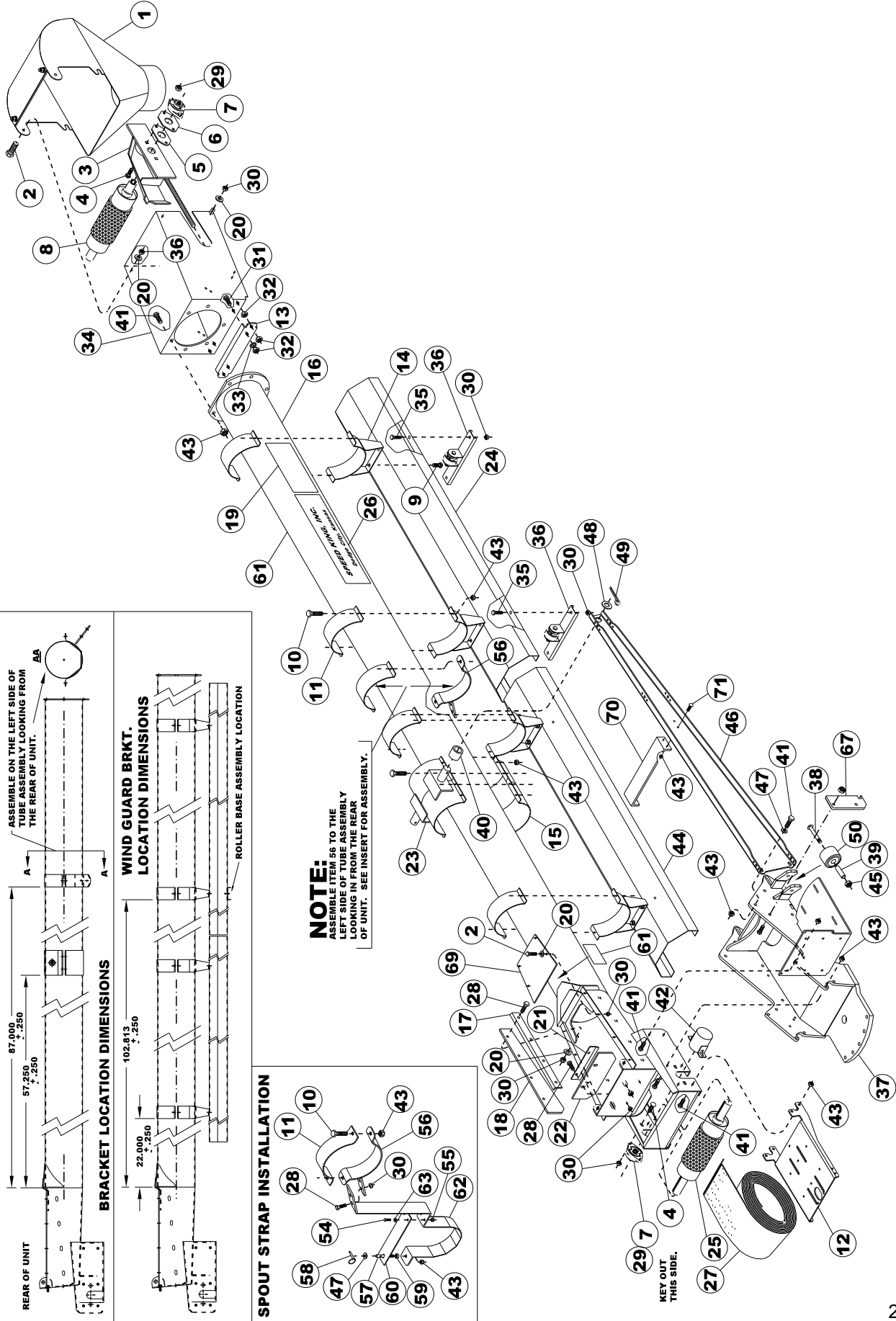
Seed Tote 4 Box Telescoping Conveyor

#63186100 Conveyor Assembly

Item	Qty	Part No.	Description
1	1	62884200	Top Tube
2	2	82638800	Roller Shaft
3	2	62891700	S-wrap Roller
4	1	62925300	Support Frame
5	1	01071000	Bolt 5/8" x 2"
6	2	330720	Machine Bushing 5/8 x 1 1/8 x 14ga
7	1	430603	Idler Sprocket #40-17T 5/8" Bore
8	1	01572700	Nylock 5/8"
9	23	330837	Nylock 3/8"
10	3	335877	Bolt 3/8" x 1 3/4
11	1	20982500	Chain Guard
12	1	03881000	Motor 12V
13	1	972026	Cover
14	1	971994	Motor Mount
15	1	972034	Motor Mount
16	1	234641	Prox Switch Mount Plate
17	18	01144500	Bolt 5/16" x 3/4x'
18	8	330845	Lock Washer 5/16"
19	22	331611	Nylock 5/16"
20	4	334409	Carriage Bolt 5/16" x 3/4
21	2	03871100	Screw 1/2" x 3/4 Flat Hd
22	2	20972600	Nylon Guide
23	2	332197	Square Nut 1/2"
24	1	63387500	Lower Tube Assy
25	1	32588600	Motor Mount Plate
26	16	01158500	Bolt 3/8" x 1 1/4"
27	2	330043	Lock Washer 3/8"
28	1	82950700	Feed Tube Mount
29	1	62890900	Wind Guard
30	6	330894	Flat Washer 3/8"
31	2	334847	Wing Nut 3/8"
32	1	62896600	Belt PVG 110 Crescent 8" x 47'-8 3/8"
33	1	62886700	Upper Roller Bracket

Item	Qty	Part No.	Description
34	2	03869500	Retaining Ring 5/8" Self-Locking
35	3	20863700	Guard Bushing
36		709501	Chain #40 x ft (397 Links)
37	3	434084	Chain Connector #40
38			
39	1	82502600	Shaft End Guard
40	1	434225	Sprocket #40 -10T
41	1	313718	Shaft 1" x 11 7/8
42	6	330852	Flat Washer 5/16"
43	6	330654	Carriage Bolt 3/8" x 1"
44	4	335448	HHCS .313 X 1.500
45	2	331363	Nylock 1/2"
46	2	333310	Carriage Bolt 1/2" x 3 1/2"
47	2	30131700	Roller Bushiing
48	2	60967700	Roller Assembly
49	2	241034	Side Support Plate
50	2	334037	Cotter Pin 1/4 x 2 1/2"
51	2	330407	Flat Washer 1"
52			
53			
54			
55			
56	1	330035	Hex Nut 3/8"
57	1	330928	Klik Pin 3/16"
58	1	16864100	Spout Pin Shaft
59	1	614321	Spout Strap
60	1	31012800	Engine Side Plate
61	1	63046700	Engine Assembly
62	1	31006000	Hopper Side Left
63	1	31005200	Hopper Side Right
64	1	31007800	Hopper Back
65	1	244384	3PCFlexible Spout Hanger
66	2	01017300	HHCS .375 x 1
67	2	02016400	Flat Wsasher .250
68	1	04380200	Decal "Patent No"
69	1	434407	Chain #40 x 53P
70	1	434092	Chanin #40 Offset Link
71	1		
72			
73			
74	4	04538500	HHCS .250 x .750
75	4	330050	Washer .250 Lock

Seed Tote 4 Box Head/Tail - Standard Tube



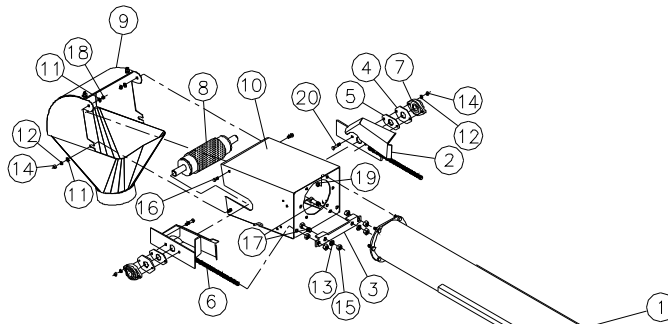
Seed Tote 4 Box Head/Tail - Standard Tube

#883835 Conveyor Assembly

Item	Qty	Part No.	Description
1	1	62884200	Top Tube
2	2	82638800	Roller Shaft
3	2	62891700	S-wrap Roller
4	1	62925300	Support Frame
5	1	01071000	Bolt 5/8" x 2"
6	2	330720	Machine Bushing 5/8 x 1 1/8 x 14ga
7	1	430603	Idler Sprocket #40-17T 5/8" Bore
8	1	01572700	Nylock 5/8"
9	23	330837	Nylock 3/8"
10	3	335877	Bolt 3/8" x 1 3/4
11	1	20982500	Chain Guard
12	1	03881000	Motor 12V
13	1	972026	Cover
14	1	971994	Motor Mount
15	1	972034	Motor Mount
16	1	234641	Prox Switch Mount Plate
17	18	01144500	Bolt 5/16" x 3/4x'
18	8	330845	Lock Washer 5/16"
19	22	331611	Nylock 5/16"
20	4	334409	Carriage Bolt 5/16" x 3/4
21	2	03871100	Screw 1/2" x 3/4 Flat Hd
22	2	20972600	Nylon Guide
23	2	332197	Square Nut 1/2"
24	1	63387500	Lower Tube Assy
25	1	32588600	Motor Mount Plate
26	16	01158500	Bolt 3/8" x 1 1/4"
27	2	330043	Lock Washer 3/8"
28	1	82950700	Feed Tube Mount
29	1	62890900	Wind Guard
30	6	330894	Flat Washer 3/8"
31	2	334847	Wing Nut 3/8"
32	1	62896600	Belt PVG 110 Crescent 8" x 47'-8 3/8"
33	1	62886700	Upper Roller Bracket

Item	Qty	Part No.	Description
34	2	03869500	Retaining Ring 5/8" Self-Locking
35	3	20863700	Guard Bushing
36		709501	Chain #40 x ft (397 Links)
37	3	434084	Chain Connector #40
38			
39	1	82502600	Shaft End Guard
40	1	434225	Sprocket #40 -10T
41	1	313718	Shaft 1" x 11 7/8
42	6	330852	Flat Washer 5/16"
43	6	330654	Carriage Bolt 3/8" x 1"
44	4	335448	HHCS .313 X 1.500
45	2	331363	Nylock 1/2"
46	2	333310	Carriage Bolt 1/2" x 3 1/2"
47	2	30131700	Roller Bushiing
48	2	60967700	Roller Assembly
49	2	241034	Side Support Plate
50	2	334037	Cotter Pin 1/4 x 2 1/2"
51	2	330407	Flat Washer 1"
52			
53			
54			
55			
56	1	330035	Hex Nut 3/8"
57	1	330928	Klik Pin 3/16"
58	1	16864100	Spout Pin Shaft
59	1	614321	Spout Strap
60	1	31012800	Engine Side Plate
61	1	63046700	Engine Assembly
62	1	31006000	Hopper Side Left
63	1	31005200	Hopper Side Right
64	1	31007800	Hopper Back
65	1	244384	3PCFlexible Spout Hanger
66	2	01017300	HHCS .375 x 1
67	6	02016400	Flat Wsasher .250
68	1	04380200	Decal "Patent No"
69	1	434407	Chain #40 x 53P
70	1	434092	Chanin #40 Offset Link
71			
72			
73			
74	4	04538500	HHCS .250 x .750
75	4	330050	Washer .250 Lock

Seed Tote 4 Box Telescoping Conveyor

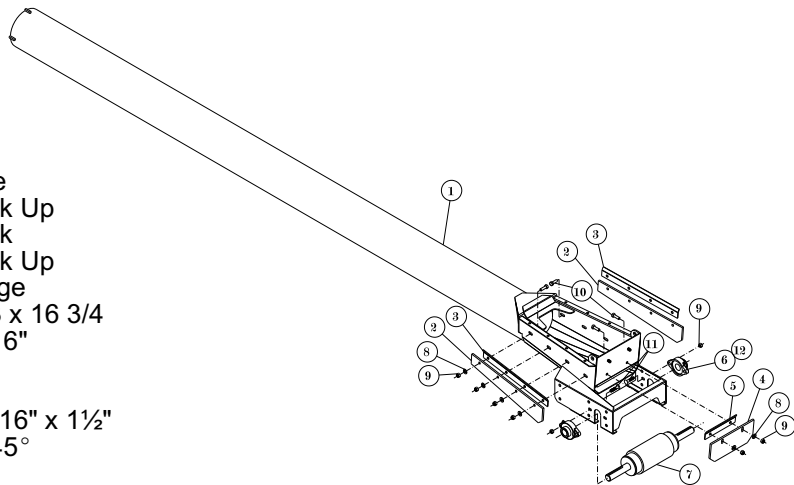


#62884200 Top Tube Assembly

Item	Qty	Part No.	Description
1	1	82616400	Upper Tube
2	1	961714	Take Up Bar Right
3	1	16497400	Take Up Bracket
4	2	151753	Bearing Slide Outer
5	2	151746	Bearing Slide Inner
6	1	961565	Take Up Bar Left
7	2	03001500	Bearing 1" Flange
8	1	62212600	Lagged Roller 3 x 14
9	1	63198600	Spout w/Lining
10	1	82353400	Head Frame
11	4	330852	Flat Washer 5/16"
12	6	330845	Lock Washer 5/16"
13	2	330142	Lock Washer 1/2"
14	6	330811	Hex Nut 5/16"
15	6	330134	Hex Nut 1/2"
16	2	01144500	Bolt 5/16" x 3/4"
17	2	335240	Bolt 1/2" x 1 3/4"
18	2	331611	Nylock 5/16"
19	6	330837	Nylock 3/8"
20	4	335448	Bolt 5/16" x 1 1/2"

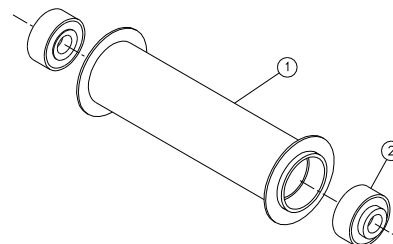
#63387500 Bottom Tube Assembly

Item	Qty	Part No.	Description
1	1	83337600	Bottom Tube
2	2	16431900	Skirt Board Side
3	2	16427700	Skirt Board Back Up
4	1	16432700	Skirt Board Back
5	1	16428500	Skirt Board Back Up
6	2	03001500	Bearing 1" Flange
7	1	62705900	Lagged Roller 3 x 16 3/4
8	10	330852	Flat Washer 5/16"
9	14	331611	Nylock 5/16"
10	10	01010800	Bolt 5/16" x 1"
11	4	01261700	Carriage Bolt 5/16" x 1 1/2"
12	2	01162700	Zerk 1/4"-28 x 45°



#62891700 S-Wrap Roller Assembly

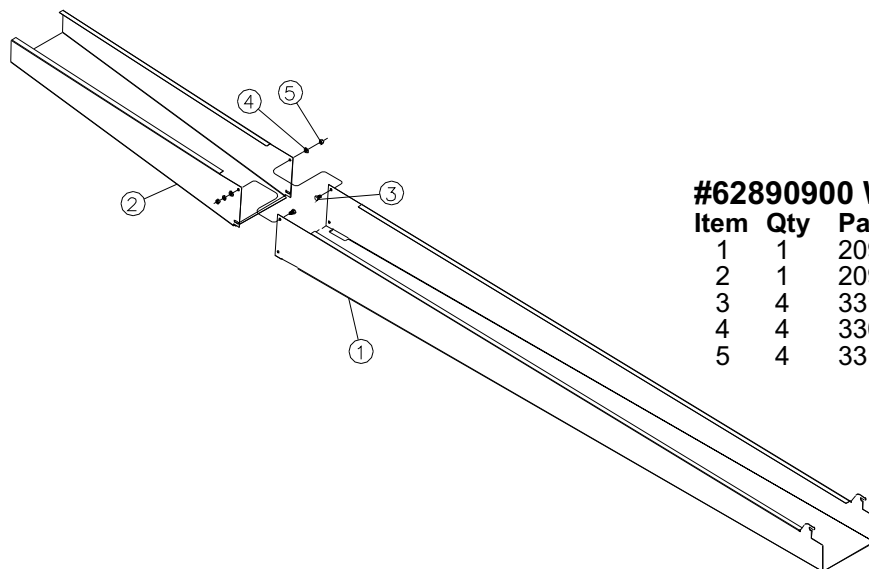
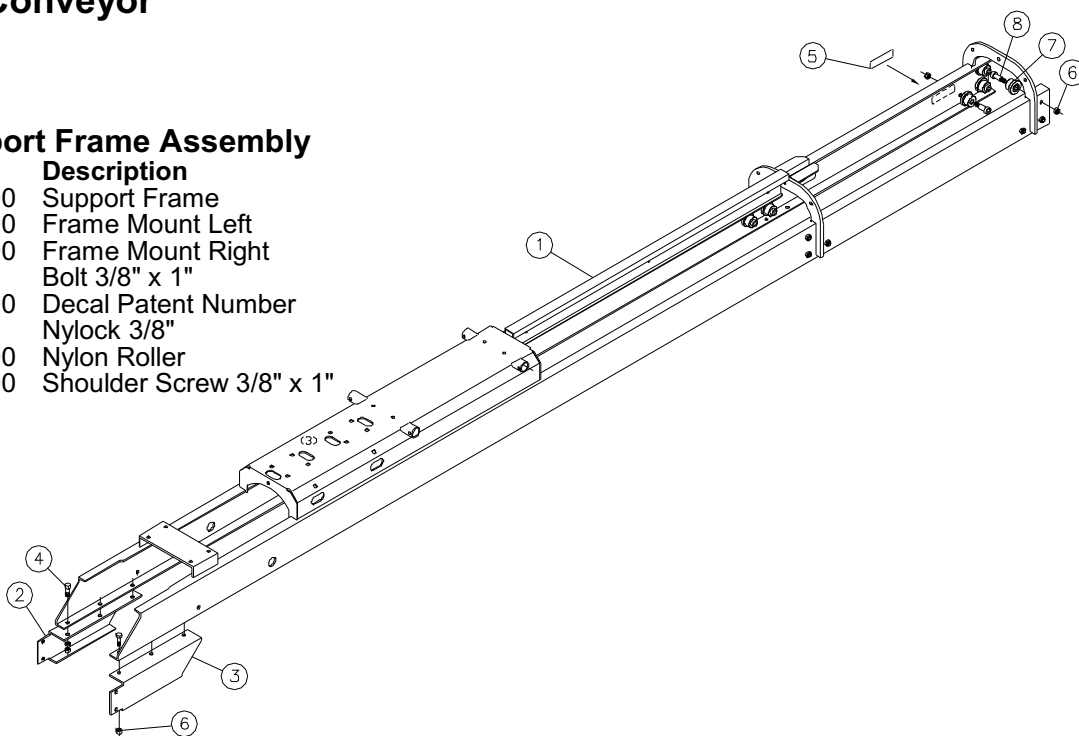
Item	Qty	Part No.	Description
1	1	82639600	S-Wrap Roller
2	2	401042	Bearing



Seed Tote 4 Box Telescoping Conveyor

#62925300 Support Frame Assembly

Item	Qty	Part No.	Description
1	1	82657800	Support Frame
2	1	20945200	Frame Mount Left
3	1	20946000	Frame Mount Right
4	6	330654	Bolt 3/8" x 1"
5	1	04152500	Decal Patent Number
6	18	330837	Nylock 3/8"
7	12	20947800	Nylon Roller
8	12	03866100	Shoulder Screw 3/8" x 1"

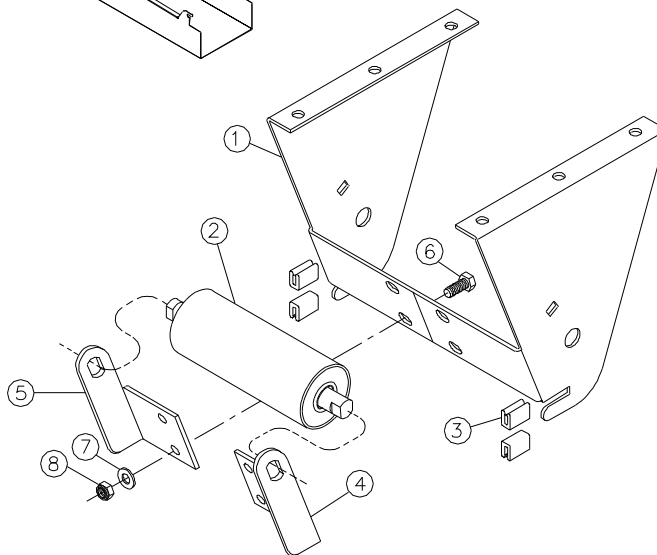


#62890900 Wing Guard Assembly

Item	Qty	Part No.	Description
1	1	20973400	Lower Guard
2	1	20974200	Upper Guard
3	4	331546	Bolt 5/16" x 1/2"
4	4	330852	Flat Washer 5/16"
5	4	331611	Nylock 5/16"

#62886700 Upper Roller Bracket

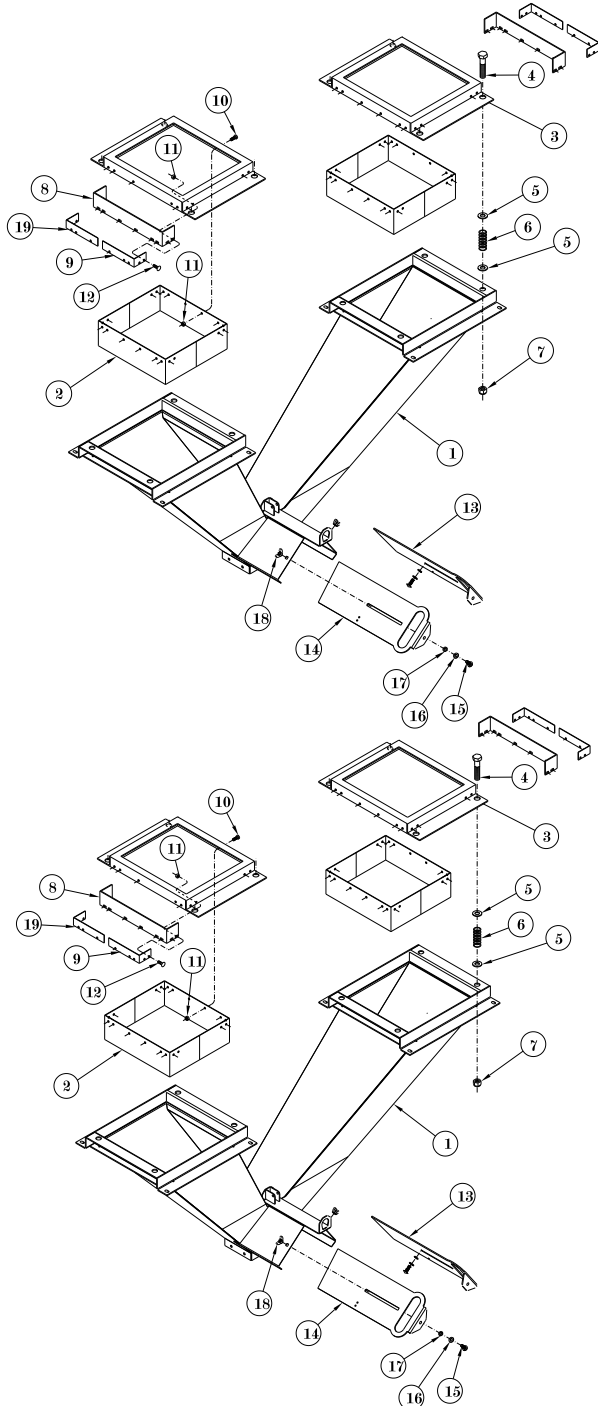
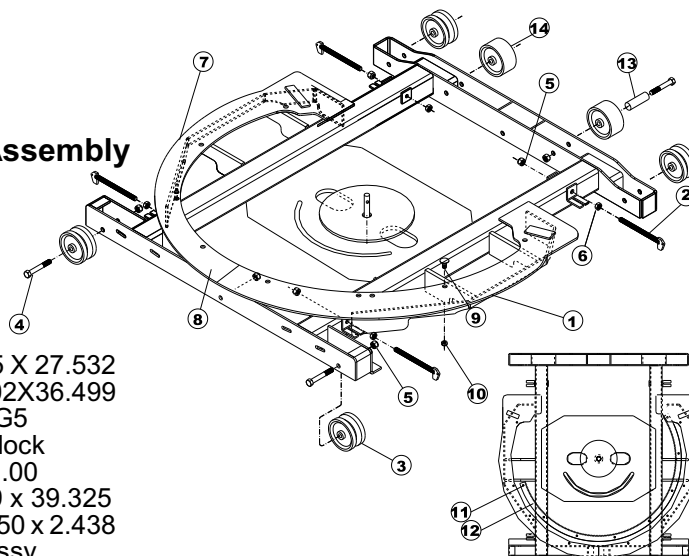
Item	Qty	Part No.	Description
1	1	82633900	Roller Mount
2	1	60190600	Roller Assembly
3	4	20956900	Trim Lock 1/8" x 9/16 x 13/16"
4	1	20953600	Roller Bracket Left
5	1	20959300	Roller Bracket Right
6	4	01144500	Bolt 5/16" x 3/4"
7	4	330852	Flat Washer 5/16"
8	4	331611	Nylock 5/16"



Seed Tote 4 Box

#63185300 Conveyor Carriage Assembly

Item	Qty	Part No.	Description
1	1	82948100	Carriage
2	4	82949900	Take up
3	4	04188900	Roller
4	8	334300	Bolt 1/2" x 3"
5	12	331363	Nylock 1/2"
6	4	332262	Jam Nut 1/2"
7	2	30987200	Plate .250 X 10.5 X 27.532
8	1	30986400	Plate .250 X 12.02X36.499
9	10	01047000	Bolt .313 X 1.00G5
10	18	331611	Nut .313 Hex Nylock
11	8	01261700	Crg Bolt .313 x 1.00
12	1	32777500	Plt .375 x 31.079 x 39.325
13	2	32861700	Tube-Rd .78 x .250 x 2.438
14	2	60967700	Outside Roller Assy



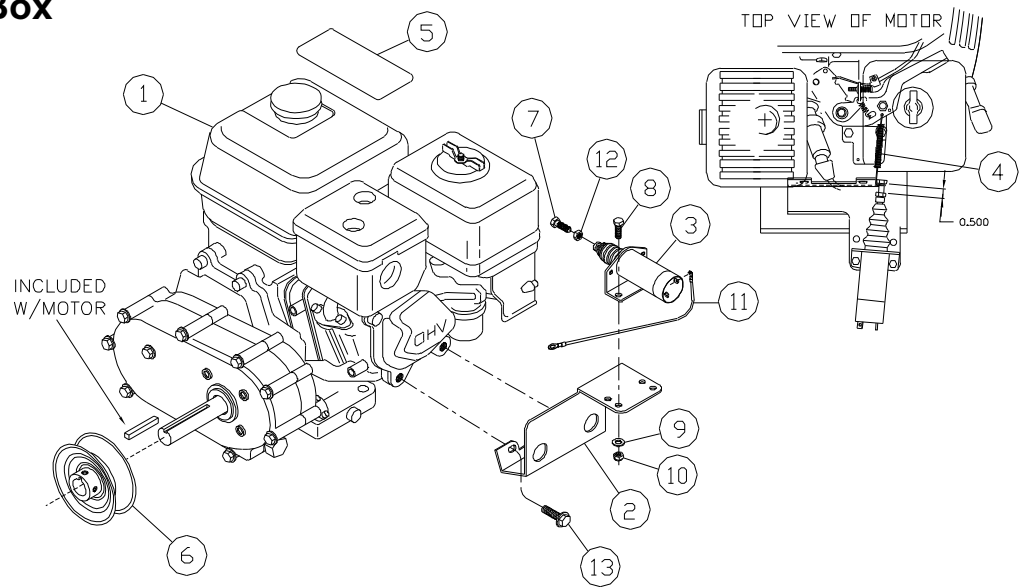
#63187900 Hopper Assembly Front

Item	Qty	Part No.	Description
1	1	82952300	Hopper Front
2	2	82105800	Inside Frame
3	2	82107400	Frame Top
4	8	335620	Bolt 5/8" x 3"
5	16	330183	Flat Washer 5/8"
6	8	501031	Spring
7	8	01572700	Nylock 5/8"
8	4	17252800	Deflector Skirt Board
9	4	17251000	Deflector Back Up
10	16	01057900	Bolt 1/4" x 3/4"
11	32	330522	Nylock 1/4"
12	16	337949	Carriage Bolt 1/4" x 3/4"
13	1	32867400	Gate
14	1	31134000	Gate
15	2	01252600	Carriage Bolt 5/16" x 1"
			Stainless Steel
16	2	02218600	Flat Washer 5/16"
			Stainless Steel
17	2	02234300	Lock Washer 5/16"
			Stainless Steel
18	2	335984	Wing Nut 5/16"
19	2	32222000	Deflector Back up

#63423800 Hopper Assembly Rear

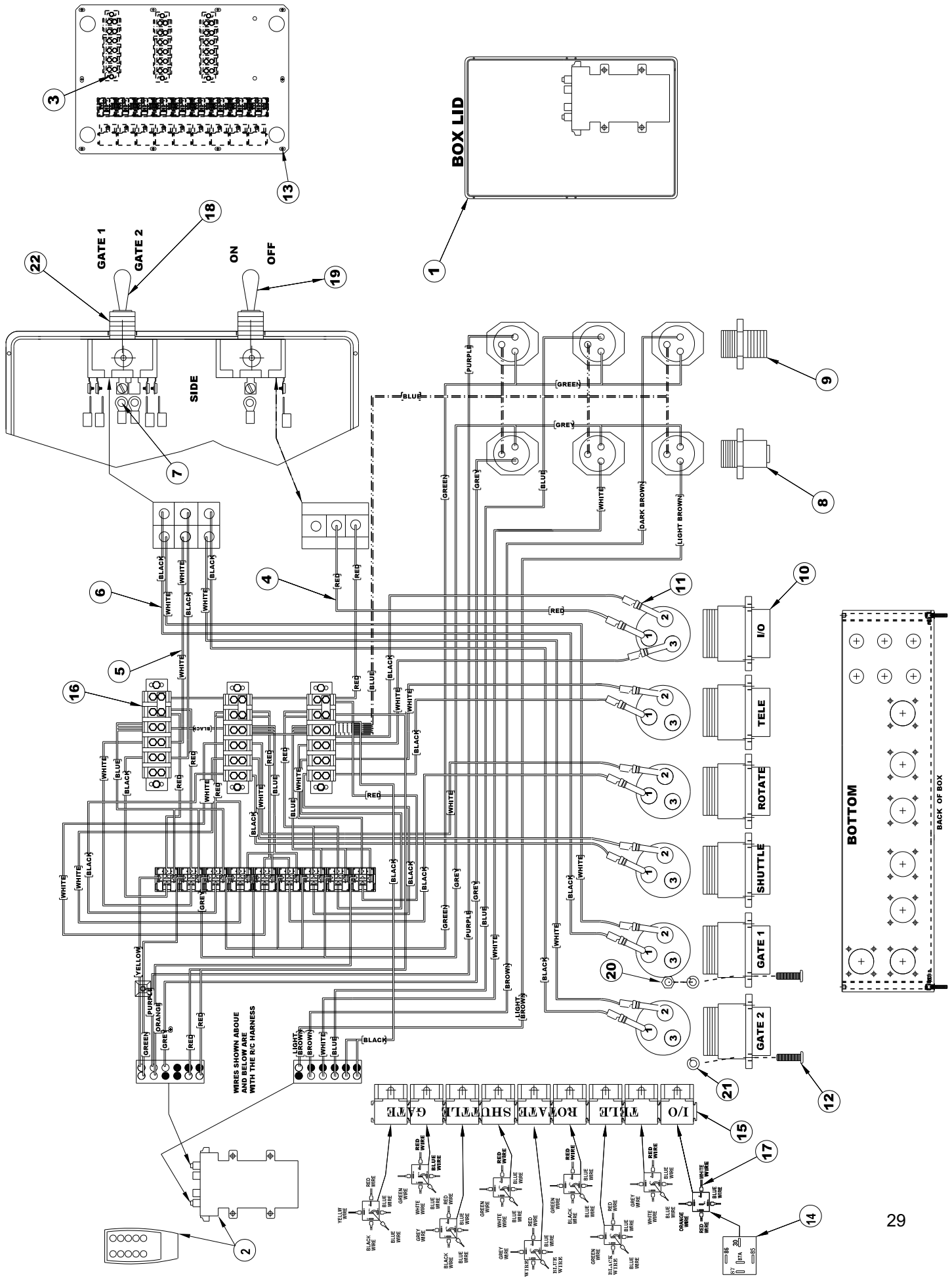
Item	Qty	Part No.	Description
1	1	84731900	Hopper Rear
2	2	82105800	Inside Frame
3	2	82107400	Frame Top
4	8	335620	Bolt 5/8" x 3"
5	16	330183	Flat Washer 5/8"
6	8	501031	Spring
7	8	01572700	Nylock 5/8"
8	4	17252800	Deflector Skirt Board
9	4	17251000	Deflector Back Up
10	16	01057900	Bolt 1/4" x 3/4"
11	32	330522	Nylock 1/4"
12	16	337949	Carriage Bolt 1/4" x 3/4"
13	1	32867400	Gate
14	1	32866600	Gate
15	2	01252600	Carriage Bolt 5/16" x 1"
			Stainless Steel
16	2	02218600	Flat Washer 5/16"
			Stainless Steel
17	2	02234300	Lock Washer 5/16"
			Stainless Steel
18	2	335984	Wing Nut 5/16"
19	2	32222000	Deflector Back up

Seed Tote 4 Box



#63046700 Engine Assembly			
Item	Qty	Part No.	Description
1	1	03750400	Engine 5½" HP
2	1	82820200	Solenoid Motor Mount
3	1	03961000	Solenoid
4	1	04123600	Throttle Spring
5	2	05316500	Decal -Caution Fuel Off
6	1	16612400	Sheave 3½" Cast Iron
7	1	03959400	Bolt 1/4"-28 x 1"
8	2	01057900	Bolt 1/4" x 3/4"
9	2	02016400	Flat Washer 1/4"
10	2	330522	Nylock 1/4"
11	1	62774500	Solenoid Ground Wire
12	1	03960200	Hex Nut 1/4"-28
13	2	339242	Screw M6-1 x 16mm Flange

Remote Assembly



Remote Assembly

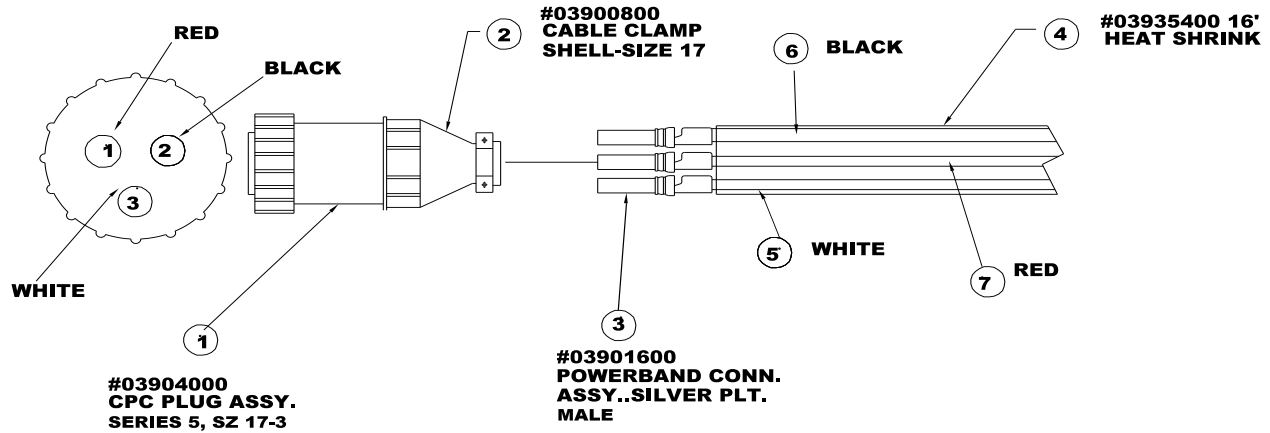
#63394100-Remote Assy

Item	Qty	Part No.	Description				
1	1	883397	Remote Enclosure	12	24	03899200	Screw #6-32 X .50 Phil Pan
2	1	04424800	10 Button Remote Kit	13	4	03893500	Screw M3-5 X 8 Phil
3	10	04312500	Screw #10-32 X .625	14	9	03892700	Relay Allied
4	10	03917200	Wire 12ga Red X Ft	15	9	03891900	Relay Socket
5	10	03916400	Wire 12ga White X Ft	16	3	03890100	Terminal Block 6 POS
6	10	03914900	Wire 12ga Black X Ft	17	45	03887700	Terminal Conn Relay 14-16ga
7	45	03912300	Wire Term 16-14ga #8-32 Non-IN	18	1	03723400	Switch Toggle SS206S-BG
8	3	03906500	Connector M12 Male 3p Panel	19	1	03713500	Switch ON-OFF-ON MON 15AMP
9	3	03905700	Connector M12 Female 3p Panel	20	24	03698800	Nut #6-32 Hex SS
10	6	03903200	Connector Recp	21	24	03697000	Washer #6 Lock SS
11	13	03902400	Contact Socket .125 Size 8 50 AMP	22	2	03682200	Switch Boot Seal

Wiring Harness

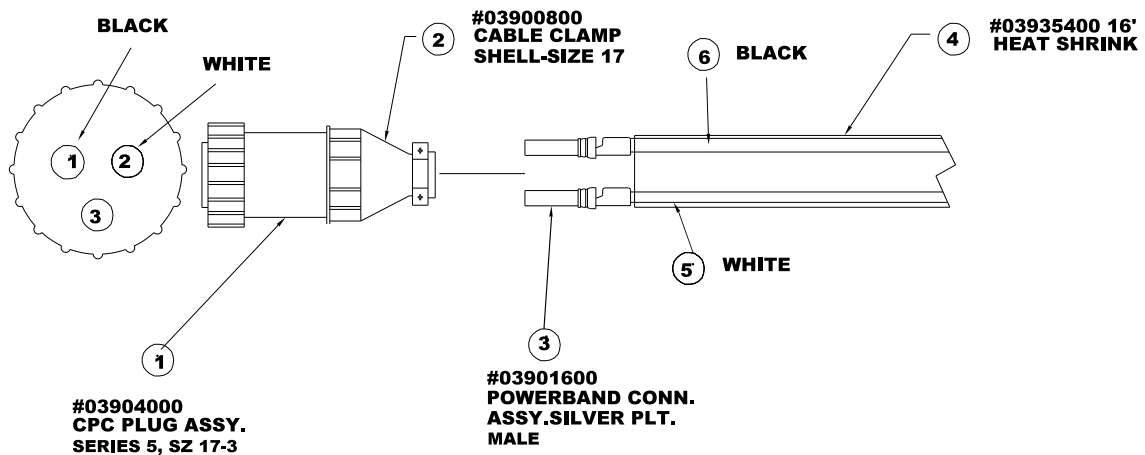
#616821-Harness-Power Lead

Item	Qty	Part No.	Description
1	1	03904000	Connecotr Plug Freehang Size 17
2	1	03900800	Cable Clamp
3	3	03901600	Contact Pin .125-8pin 50amp
4	16'	03935400	Heatshrink .472 to .236
5	18'	03916400	Wire 12ga White x Ft
6	18'	03914900	Wire 12ga Black x Ft
7	18'	03917200	Wire 12fa Red x Ft



#616839-Harness-Reley/Rotote

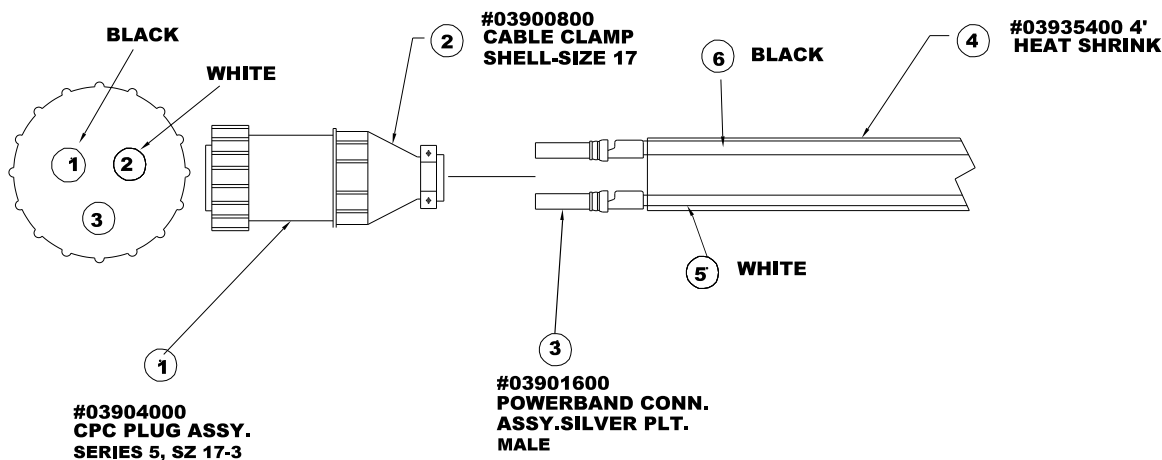
Item	Qty	Part No.	Description
1	1	03904000	Connecotr Plug Freehang Size 17
2	1	03900800	Cable Clamp
3	2	03901600	Contact Pin .125-8pin 50amp
4	16'	03935400	Heatshrink .472 to .236
5	18'	03916400	Wire 12ga White x Ft
6	18'	03914900	Wire 12ga Black x Ft



Wiring Harness

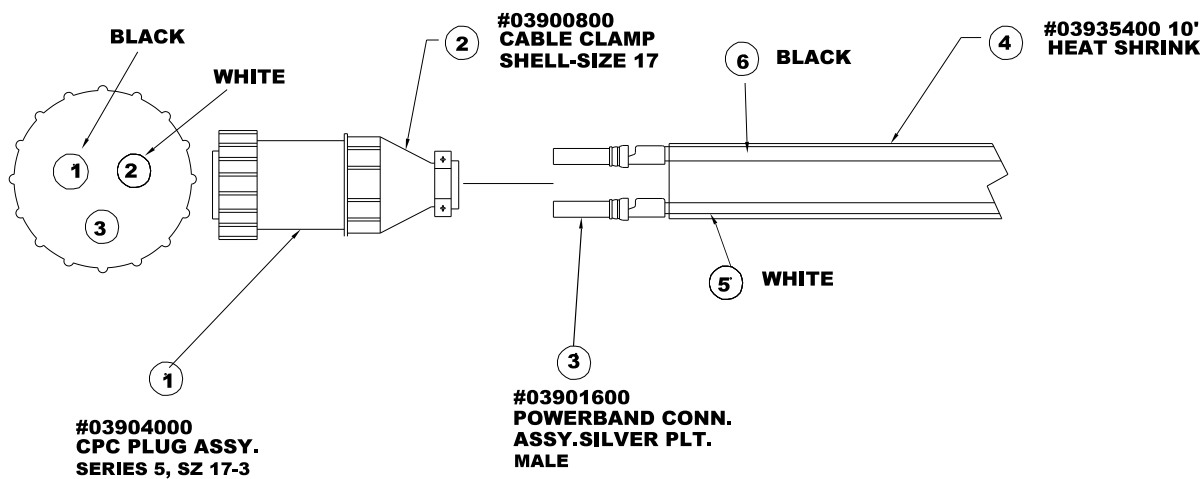
#616847-Harness-Shuttle

Item	Qty	Part No.	Description
1	1	03904000	Connecotr Plug Freehang Size 17
2	1	03900800	Cable Clamp
3	2	03901600	Contact Pin .125-8pin 50amp
4	4'	03935400	Heatshrink .472 to .236
5	4'	03916400	Wire 12ga White x Ft
6	4'	03914900	Wire 12ga Black x Ft

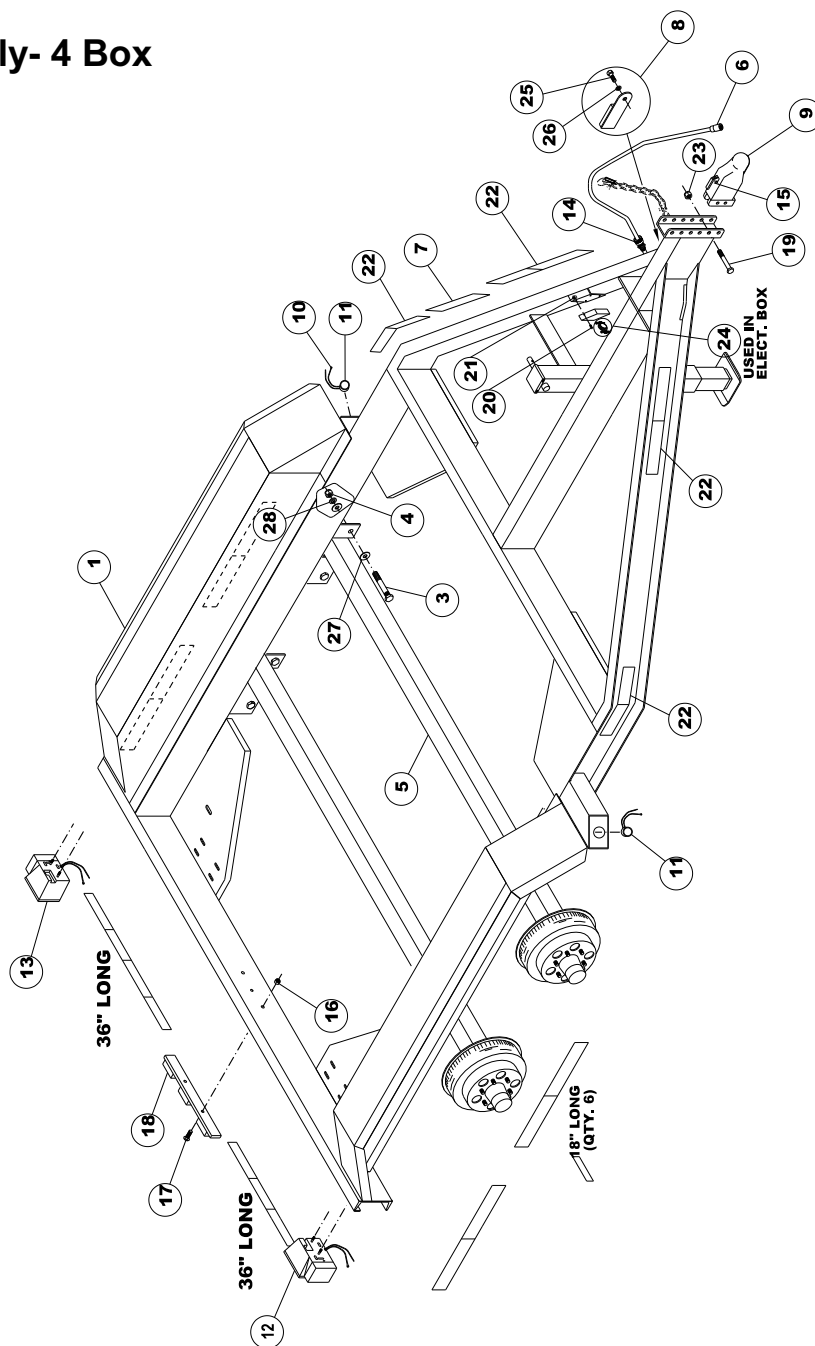


#616844-Harness-Gates

Item	Qty	Part No.	Description
1	1	03904000	Connecotr Plug Freehang Size 17
2	1	03900800	Cable Clamp
3	2	03901600	Contact Pin .125-8pin 50amp
4	10'	03935400	Heatshrink .472 to .236
5	12'	03916400	Wire 12ga White x Ft
6	12'	03914900	Wire 12ga Black x Ft



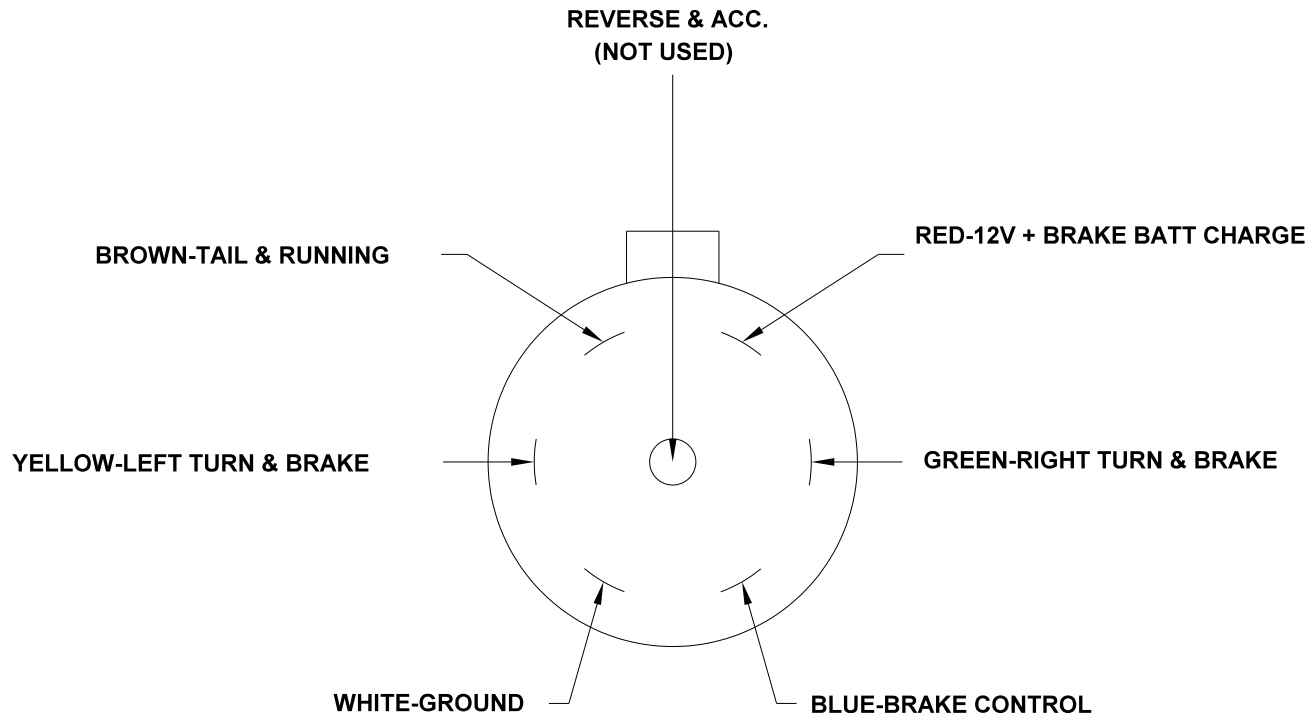
Trailer Assembly- 4 Box



#883603 Trailer Assembly

Item	Qty	Part No.	Description	Item	Qty	Part No.	Description
1	1	982173	Trailer Conduit WA 4 Box	15	1	338772	Pin Wire Lock .250 X 2.750 SQ
2				16	2	338533	Nut #12-24 Hex Nylock
3	8	338541	HHCS .625 X 1.500 SAE	17	2	338525	Screw #12-24 Hex Nylock
4	8	332494	Nut .625 Hex SAE	18	1	613372	Red Light Bar-LED
5	2	600205	Axle 8000# Hybird Electric	19	2	338517	HHCS .625 X 4.500 GR8
6	1	616540	Wire RV Plug 12-706	20	4	331835	HHCS.250 X 1.00- GR5
7	1	609875	Decal Trailer Safety 5 Point	21	4	330522	Nut .250 Hex Nylock
8	1	609677	Breakaway Kit W/Box & Battery	22	.143	03726700	Refelctor Tape 2" X 150' Red/White
9	1	609669	Coupler 20,000#-2.313"	23	2	01572700	Nut .625 Hex Nylock
10				24	2	03394400	Clamp .375 Romex Conn
11	2	613364	Clearance Light Amber LED	25	1	01552900	HHCS .250 X 1.00 Self Drill
12	1	613380	Right Tail Light Red LED	26	1	330550	Washer .250 Lock
13	1	613406	Left Trail Light Red LED W/ Tag light	27	16	330183	Washer .625 Flat
14	1	473470	Strain Relief .625"	28	8	330878	Washer .625 Lock

4 Box Trailer Trailer RV Plug



NOTE: LOOKING FROM BACK OF PLUG



P.O.Box 526 • Spearville Kansas 67876 • (620) 227-7106 • crustbuster.com
