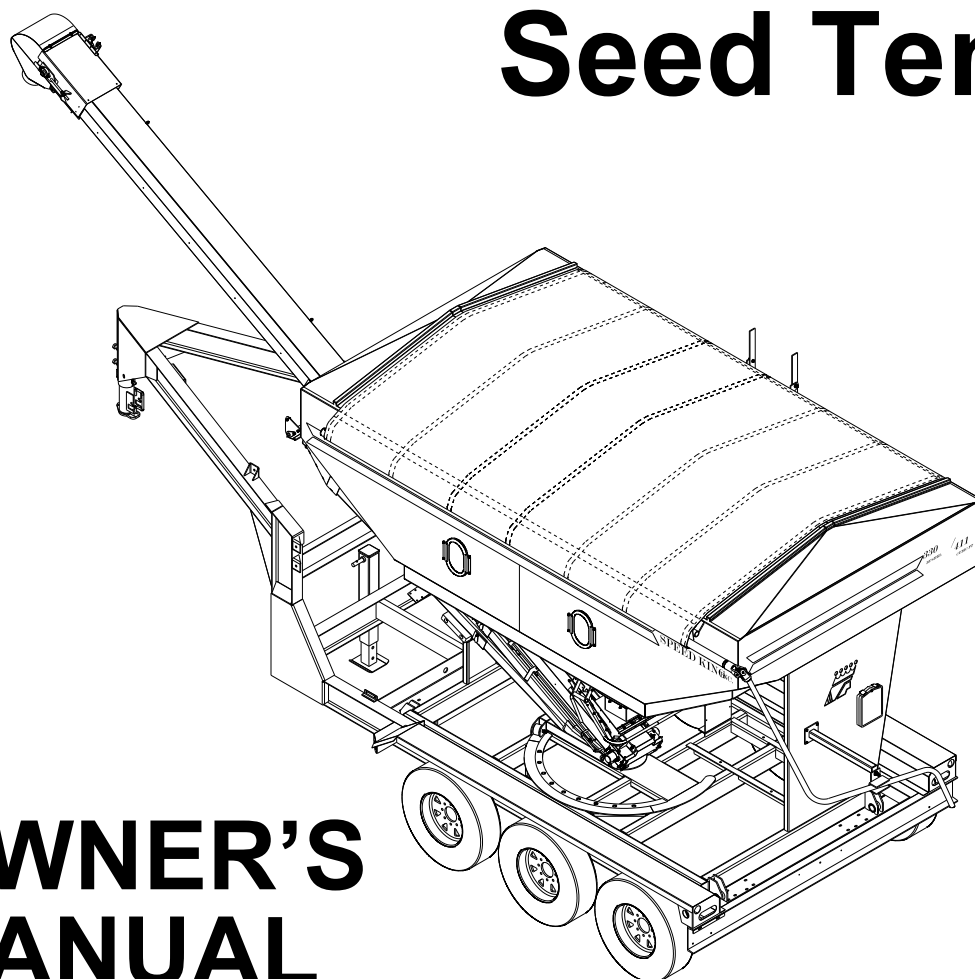




P.O. Box 526 - Spearville, Kansas 67876 - (620) 227-7106
crustbuster.com

330 Seed Tender



OWNER'S MANUAL

Table of Contents

Warranty Information	Inside Front Cover
Operator Qualifications	1
Safety	2-4
Maintenance	5
Operation	6
Belt Assembly	7
Dimensions	8-9

Repair Parts	
Tank & Pivot -Hydraulic	10-11
Tank & Pivot -Gas	12-13
Support Arm -Hydraulic	14
Support Arm -Gas	15
Conveyor	16-17
Gas Engine.	17
Hydraulic Motor	17
Hydraulics.	18-19
Tank Hopper.	20
Flex Hopper	20
Cylinders.	20
Seed Ladder.	21
Telescoping Spout.	21
Remote Control	22-23
Trailer/Replacement Parts	24-26

Identification

Your Seed Tender is identified by a Serial Number and Model Number. Record these numbers in the spaces provided in this manual and refer to them when ordering parts or requesting service.

Serial Number	Model Number

Warranty

WARRANTY: In addition to the implied warranties of fitness and of merchantability, CrustBuster®/Speed King, Inc. warrants new products sold by it to be free from defects in workmanship and material for a period of 12 months, from the date of delivery to the first user customer. Warranty on purchased parts (cylinder, blades, bearings, shanks, etc.) will be the same as that offered by the appropriate manufacturer of these parts.

EXCLUSIONS: No warranty of any kind is made by CrustBuster®/Speed King, Inc. with regard to new products which have been subject to operation in excess of recommended capacities, misuse, abuse, negligence, or accident, or have been altered or repaired in any manner not authorized by CrustBuster®/Speed King, Inc. CrustBuster®/Speed King, Inc. is constantly striving to improve its products. Changes in design and improvement will be made whenever CrustBuster®/Speed King, Inc. believes the efficiency of its products will be improved thereby, but without incurring any obligation to incorporate such improvements in any products which have been shipped or are in service. No obligation exists for compensation of unauthorized repairs or modifications without prior approval. And in no event will CrustBuster®/Speed King, Inc. be liable for consequential damages, such as but not limited to: downtime, delayed or late tillage or planting, etc.

WARRANTY REGISTRATION: This warranty is not valid unless registered with CrustBuster®/Speed King, Inc. within 10 days from the date of purchase. It is the sole responsibility of the selling retail dealer to fill out the registration forms and see that they are properly filed with CrustBuster®/Speed King, Inc. This can be done at crustbuster.com.

WARRANTY PROCEDURE: Should any part fail to conform with this warranty, CrustBuster®/Speed King, Inc. will repair or replace the part or parts which do not conform. If a part is defective, take it to your authorized CrustBuster® Farm Equipment Dealer immediately, along with your warranty registration, and complete the proper forms requesting a warranty adjustment. Our representative will pick up the part to be returned to the factory for examination. If the customer (first user) requests that a new part be substituted for the old part, a new part will be charged to the dealer who will in turn charge the customer. If the part is found by us to be defective, a credit for the part will be given to the dealer to be passed on to the customer. If the dealer or customer wishes to repair the part, this will be done only if authorized by CrustBuster®/Speed King, Inc. This warranty procedure is in addition to all remedies authorized by law.

CRUST BUSTER®/SPEED KING, INC.
Box 526
Spearville, KS 67876

Operator Qualifications

Operation of this Seed Tender shall be limited to competent and experienced persons. In addition, anyone who will operate or work around this equipment must use good common sense. In order to be qualified, he or she must also know and meet all other requirements, such as:

1. Some regulations specify that no one under the age of 16 may operate power machinery. It is your responsibility to know what these regulations are in your area or situation.
2. Current OSHA regulations state in part: "At the time of initial assignment and at least annually thereafter the employer shall instruct EVERY employee in the safe operation of servicing of all equipment with which the employer is, or will be involved."
3. Unqualified persons are to STAY OUT of the work area.
4. A person who has not read and understood all operating and safety instructions is not qualified to operate the machinery.

**FAILURE TO READ THIS SEED TENDER MANUAL AND ITS
SAFETY INSTRUCTIONS IS A MISUSE OF THE EQUIPMENT.**



Sign Off Sheet

As a requirement of OSHA, it is necessary for the employer to train the employee in the safe operation and safety procedures with this Seed Tender. We include this sign off sheet for your convenience and personal record keeping.

DATE	EMPLOYER	EMPLOYER'S SIGNATURE



BE ALERT!

Your Safety is involved.



General Safety Statement

WATCH FOR THIS SYMBOL. IT POINTS OUT IMPORTANT SAFETY PRECAUTIONS. IT MEANS "ATTENTION — BECOME ALERT!" YOUR SAFETY IS INVOLVED.

It is your responsibility as an owner, operator, or supervisor to know and instruct everyone using this Seed Tender at the time of initial assignment and at least annually thereafter, of the proper operation, precautions, and work hazards which exist in the operation of this Seed Tender in accordance with OSHA Regulations.

Safety Is No Accident

The following safety instructions, combined with common sense, will save your equipment from needless damage and the operator from unnecessary exposure to personal hazard. Pay special attention to the caution notes in the text. Review this manual at least once each year with new and/or experienced operators.



1. Read and understand the operator's manual before operating this Seed Tender. Failure to do so is considered a misuse of the equipment.
2. Make sure Seed Tender is secure before operating.
3. Always keep children away from Seed Tender when operating.
4. Make sure everyone that is not directly involved with the operation is out of the work area before beginning the operation.
5. Make sure all safety devices, shields, and guards are in place and are functional before beginning the operation.
6. Shut off power to adjust, service, or clean.
7. Keep hands, feet, and clothing away from moving parts. It is a good idea to remove all jewelry before starting the operation.
8. Visually inspect the Seed Tender periodically during operation for signs of excessive vibration, loose fasteners, and unusual noises.

DANGER: Indicates an imminently hazardous situation which, if not avoided, will result in death or serious injury.



WARNING: Indicates a hazardous situation which, if not avoided, could result in death or serious injury.



CAUTION: Indicates a potentially hazardous situation which, if not avoided, may result in minor or moderate injury.



NOTICE: Used to address practices not related to physical injury.



CAUTION

1. Read and understand instruction manual before operating.
2. Keep all safety shields and devices in place.
3. Make certain everyone is clear before operating machine.
4. Keep hands, feet, and clothing away from moving parts.
5. Shut off power to adjust, service, or clean.
6. Make sure machine is secured before operating.
7. When transporting, shut fuel valve lever off.

Pre-Operation Check List

1. Check all bearings for proper lubrication.
2. Check the tube for foreign material.
3. Check all belts for proper tension.
4. Start unit and check tender belt alignment while unit is empty.

BELT CARE

It is suggested that the unit be run every two to three days or more often if possible. This tends to keep the tender belt alive and stops any forming of the belt to the curvature of the tube while the unit is not in use.

NOTE: Belt may deteriorate if not in use and exposed to weather conditions for any prolonged period of time.

Operation Sequence

1. Check drive belt for proper tension.
2. Make sure tender belt is properly tensioned.
3. Allow unit to run empty for a few minutes to flex tender belt.
4. Check tender belt for proper alignment.
5. Before shutting power off, be certain head and tail unit is empty.

STORAGE

Temporary Storage

1. Relieve tension from all belts; both v-belt and tender belt.
2. Store all belt equipment in a dry place. If equipment cannot be stored out of the weather, cover engine and mechanical parts with waterproof material.

Prolonged Storage

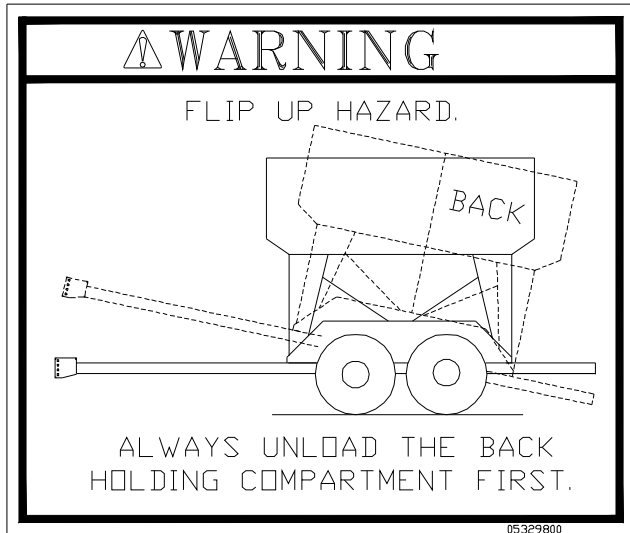
1. Remove all belts and store in a cool, dark, dry place.
2. Wash belt thoroughly.
3. Wash tube both inside and out.
4. Lubricate all bearings.
5. Store in a dry shelter.

Safety Decals

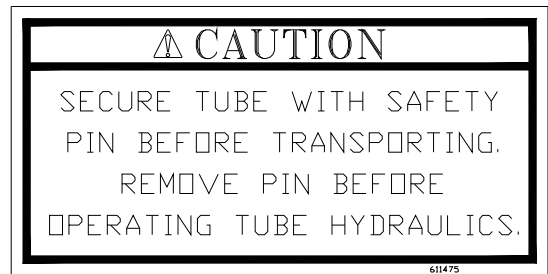
REMEMBER: If Safety signs have been damaged, removed, become illegible or parts replaced without decals, new decals must be applied. New decals are available from your authorized distributor or factory. Individual decals shown below.

NOTE: Trailer safety decals on page 14-15.

#05329800



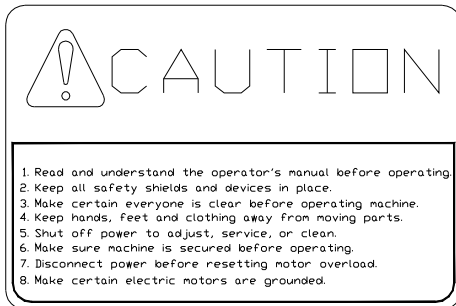
#611475



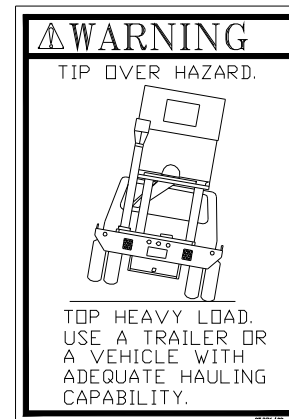
#05315700



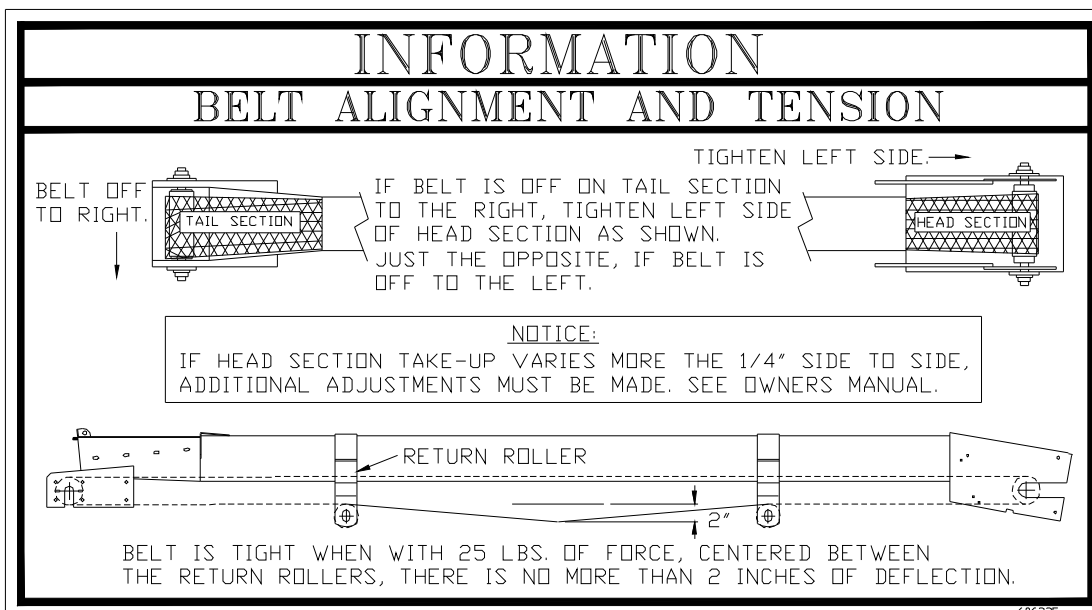
#05303300



#05326400



#606335



Maintenance

Preventive maintenance is the key to the long life of any mechanical device.

Careful and systematic inspection of the Seed Tender will result in maximum, trouble-free service.

BELT REPLACEMENT

To replace the belt, cut through belt in unit and hand rotate the head roller until belt has been removed. Install appropriate belt as outlined in assembly instructions. (See page 7.)

PERIODIC CLEAN-OUT

Due to the characteristics of certain materials, residue sometimes collects between the tender belt and the conveyor. Check the unit periodically for any material build up in this area. If residue appears excessive, remove the tender belt and thoroughly wash the belt and tube. Allow belt and tube to dry before reinstalling the belt.

When the Seed Tender is not being used, secure belt to the tube to prevent belt from flopping in the wind, possibly breaking return idlers or ripping belt.

LUBRICATION

All bearings which are fitted with grease zerks should be lubricated at the conclusion of each operating day. Before greasing the bearings, make certain the zerks are free of dirt, otherwise this will be passed into the bearing race. If the unit will be out of service for a period of time, purge the bearings.

BELT TRAINING PROCEDURE

A belt correctly installed and trained will run straight and true. The belt must run centered on all terminal rollers, take-up rollers, and return idlers throughout the entire belt length.

Incorrect installation and training can result in severe edge damage, material spillage, material leakage through the skirt rubber at the loading point, and excessive power demands. Material spillage is the usual reason for belt carcass ruptures and pulley cover gouging and stripping, while leakage at the skirt rubber results in excessive conveyor cover wear under the skirts.

ALIGNMENT

All rotating parts -head roller, tail roller, and return idlers- must be at a 90 degree angle to the direction of belt travel, must be level, and the midpoint of each centered on a line when properly aligned.

Alignment is checked by running a tight wire from the center of the head roller to the center of the tail roller.

Level all rotating parts. If a part is not level, the belt will run to the lower side.

BELT SPLICING

A belt must not run out at the splice area. Runout will occur if the belt is not cut square or splice is not installed square.

SKIRTING

Maintain skirtboards to prevent spillage of grain.

PLASTIC ROLLER REPLACEMENT

To replace plastic rollers, the belt must be removed.

Operation

1. Prior to the start-up, check to see that belt is free from any objects that would bind or tear.
2. On starting for the first time, with no load on belt, apply power for a few seconds only to see that the belt is well centered in the tube and on the return.
3. It should be noted at this time that too much tension on the belt will make adjustment or training much more difficult, shorten the life of the belt, and waste power. The belt should be tensioned tight enough so the drive roller does not slip.

TRANSPORTING

Do Not transport unit with grain in conveyor.

BELT TRAINING

It is essential that the belt be properly trained at all times. For this reason, all rotating parts should always be at right angles to the tender belt.

Slight adjustment of head roller shaft may be required to keep belts centered on them i.e., if the belt runs to one side of the roller - apply more tension to this side of the belt by advancing the roller shaft on this side.

A belt correctly installed will usually train well both empty and loaded, except as noted:

1. One or more rotating parts not in alignment.
2. Belt tensions in some part of system (usually at tail section) are below minimum recommended.
3. Belt not loaded centrally.

When a belt is initially started, it should be jogged around the system to determine if a major runout occurs which could damage belt and belt edges.

After the belt is trained empty, the belt should be trained with a load. The take-up adjustments are made to prevent belt slip and keep tensions at all points above minimums recommended when belt is operating with a load.

If slip occurs under load, additional belt tension should be adjusting the take-up only enough to prevent slip from occurring under load, and when started with a load. After additional tension is added, the alignment should be checked again and adjusted accordingly.

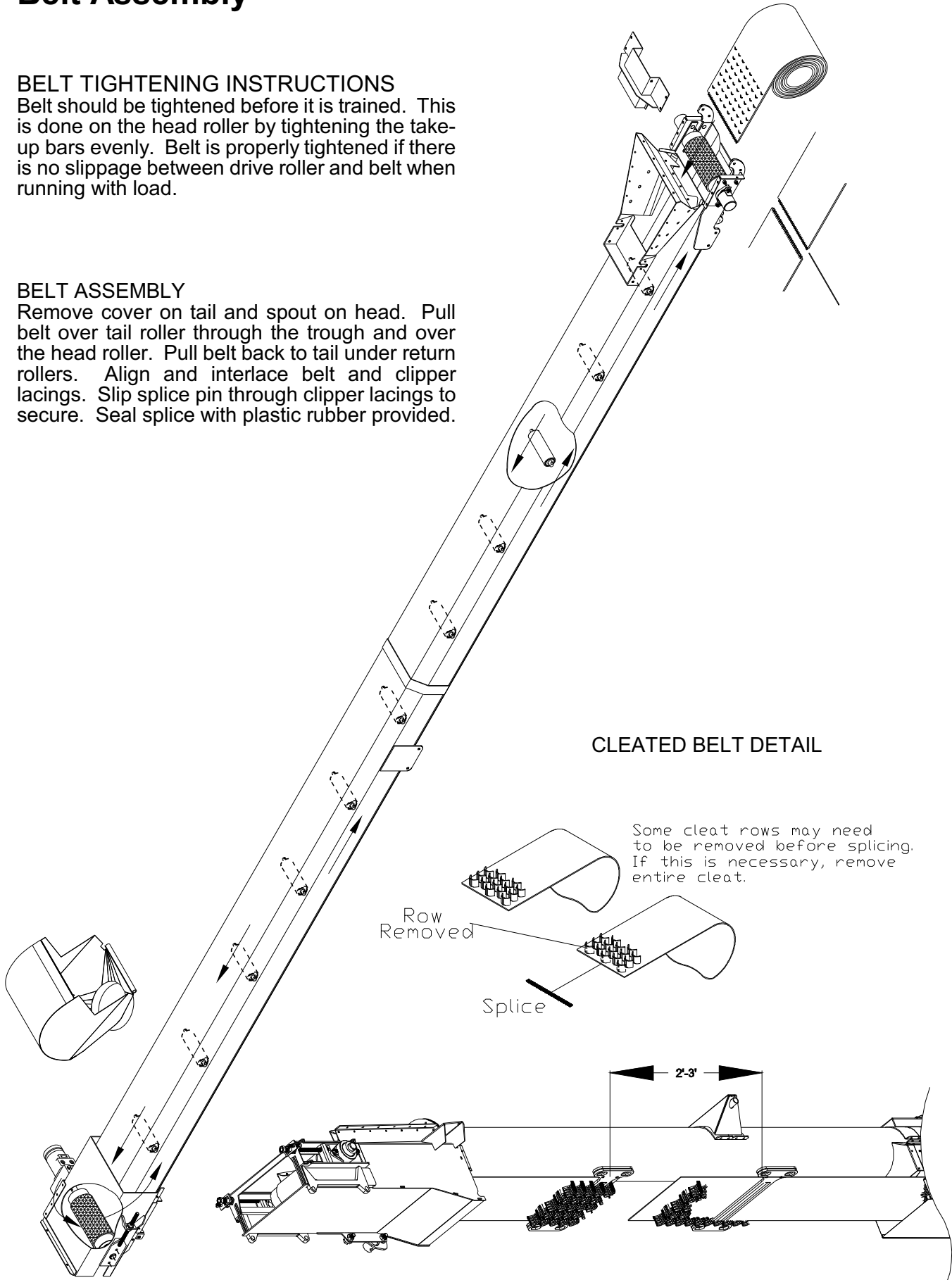
Belt Assembly

BELT TIGHTENING INSTRUCTIONS

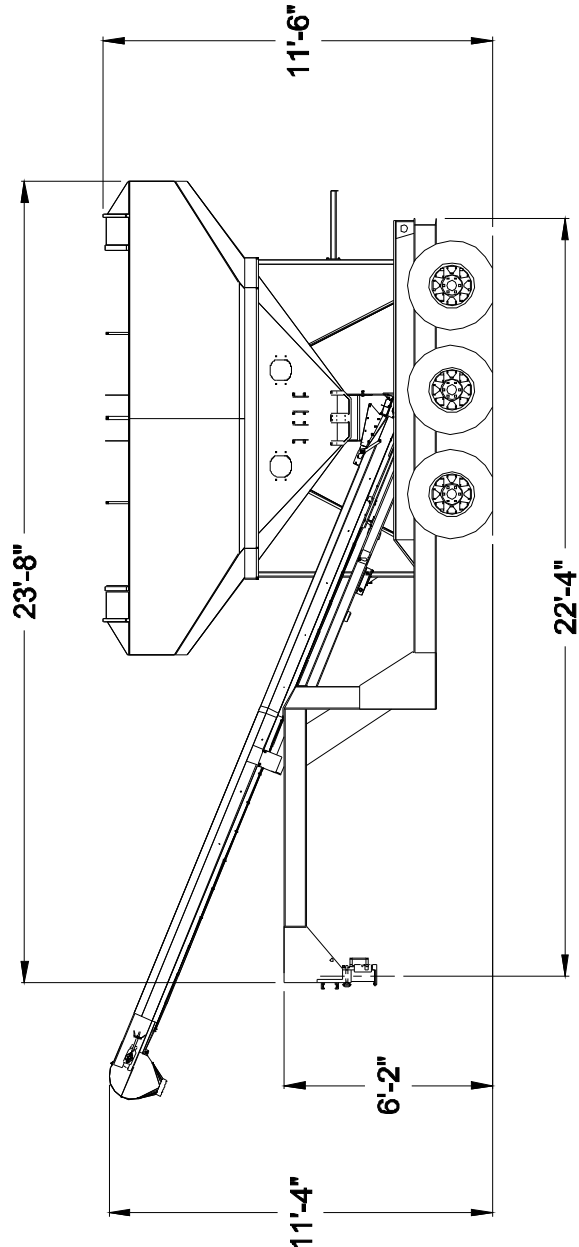
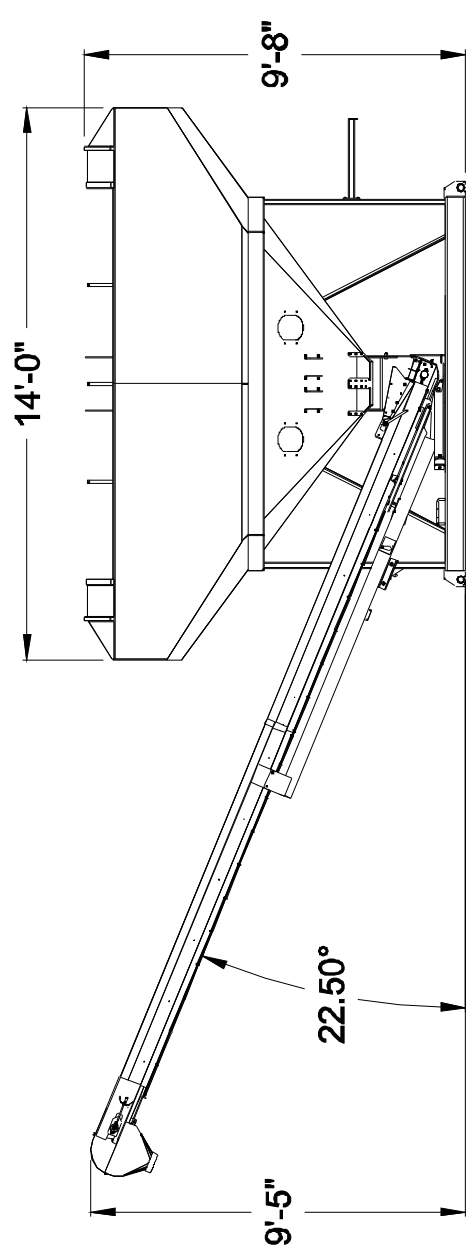
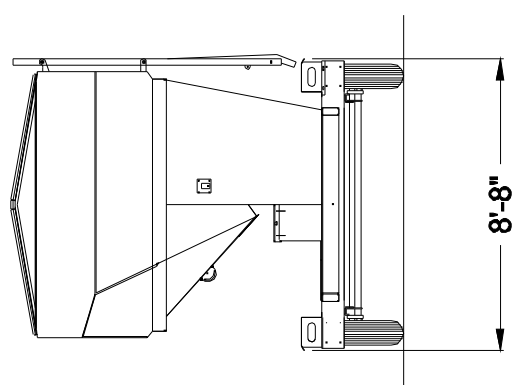
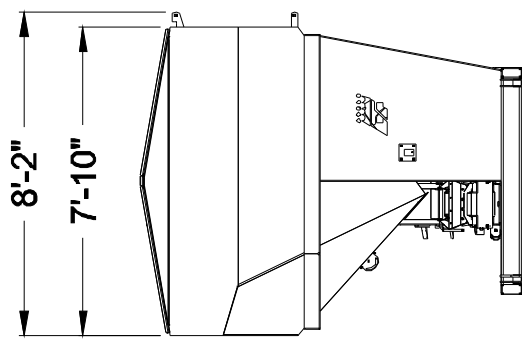
Belt should be tightened before it is trained. This is done on the head roller by tightening the take-up bars evenly. Belt is properly tightened if there is no slippage between drive roller and belt when running with load.

BELT ASSEMBLY

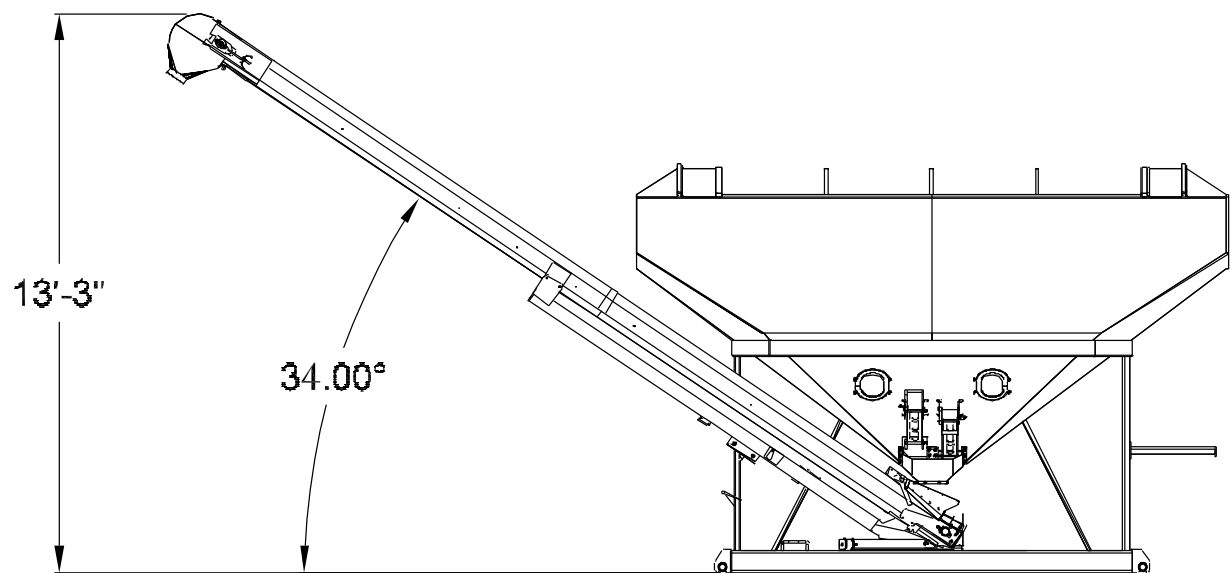
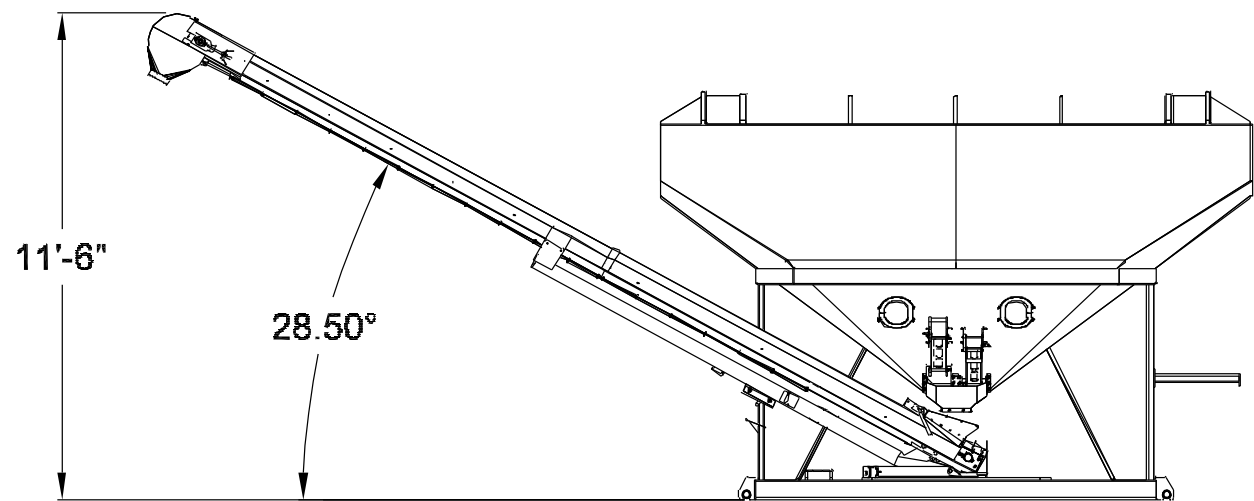
Remove cover on tail and spout on head. Pull belt over tail roller through the trough and over the head roller. Pull belt back to tail under return rollers. Align and interlace belt and clipper lacings. Slip splice pin through clipper lacings to secure. Seal splice with plastic rubber provided.



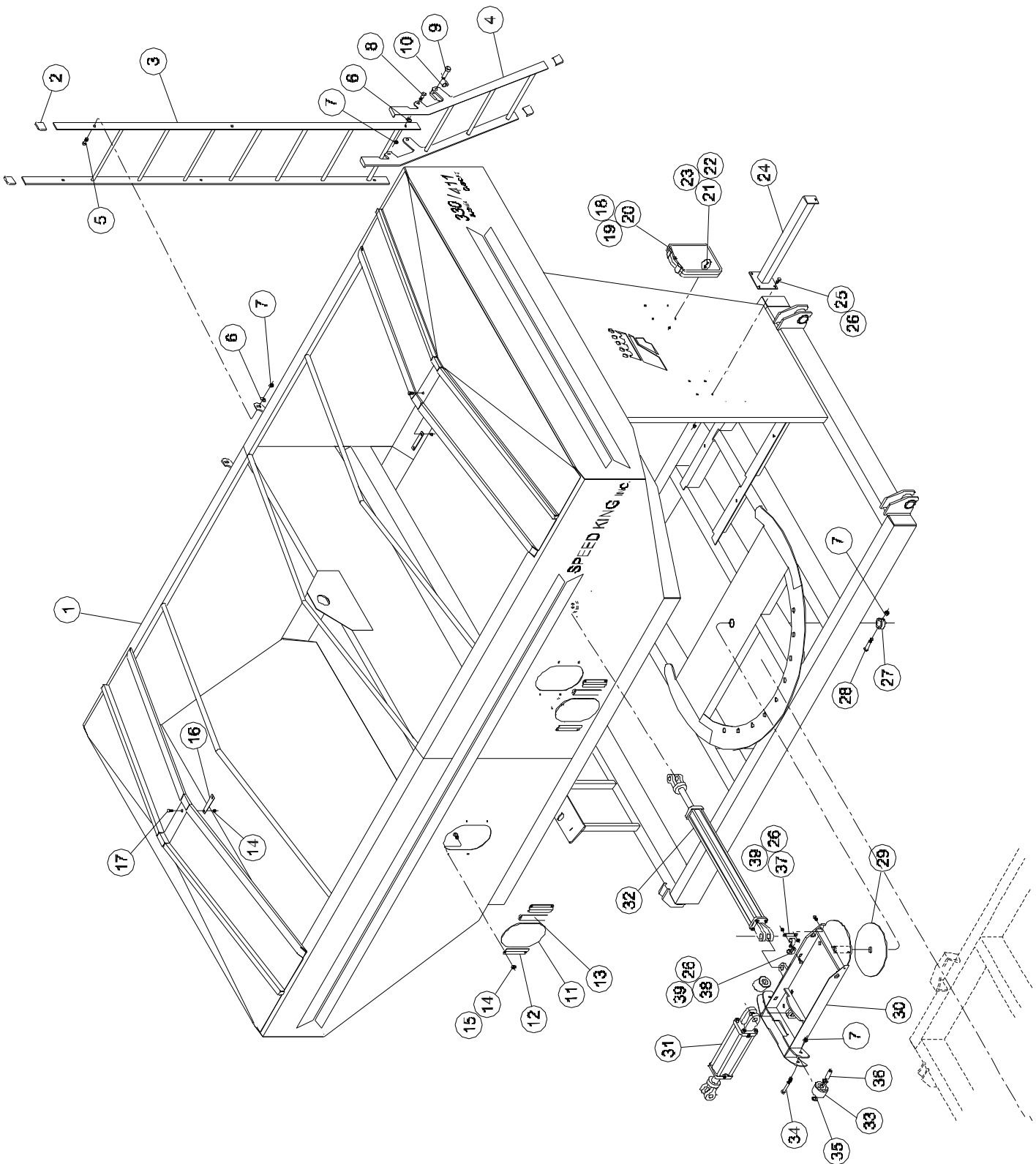
Seed Tender 330 Dimensions



Seed Tender 330



**Seed Tender 330 Hydraulic
Tank & Pivot**

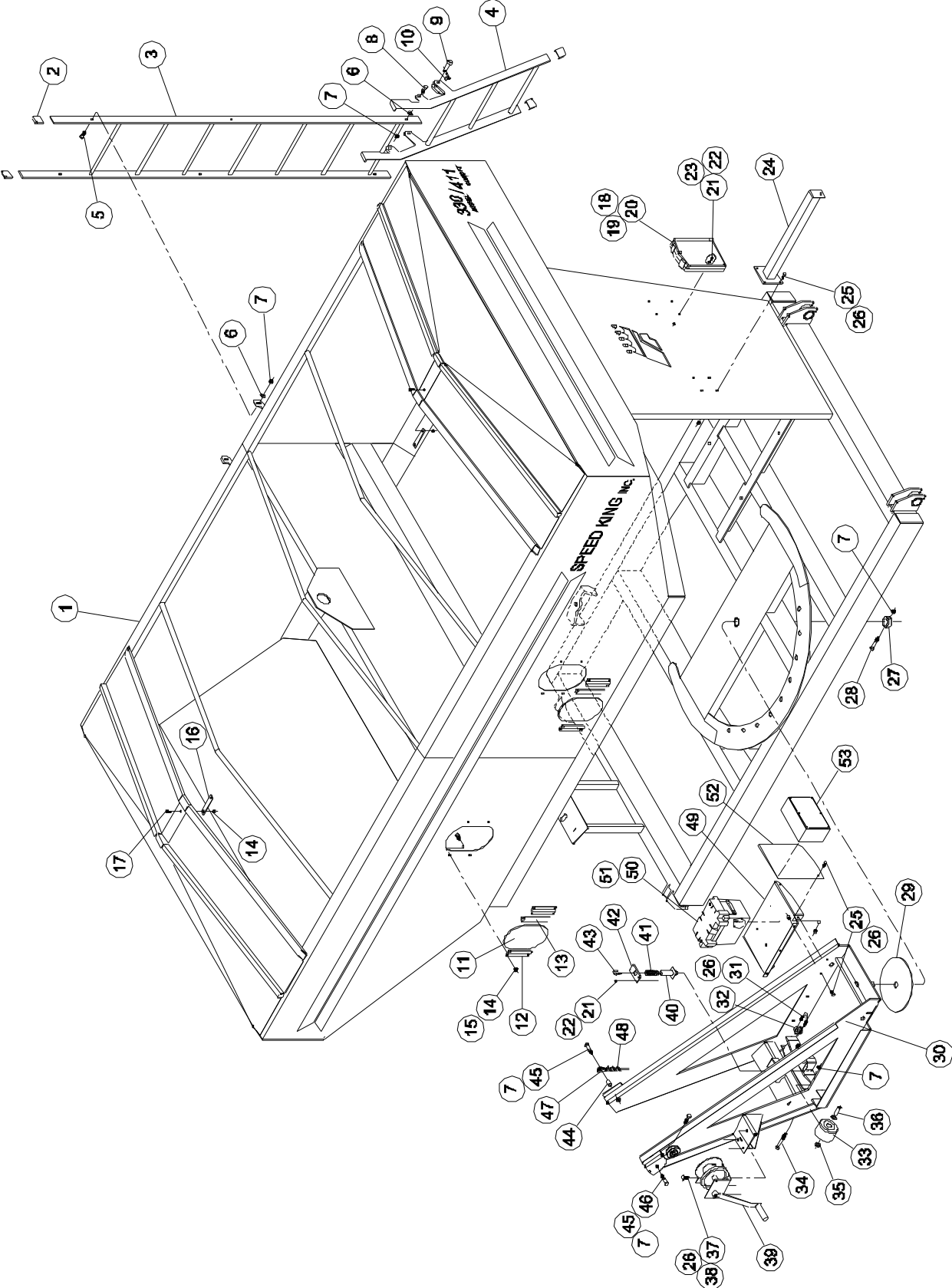


Seed Tender 330 Hydraulic Tank & Pivot

Item	Qty	Part No.	Description
1	1	82697400	Tank & Base
2	4	00716100	Vinyl Cap
3	1	82715400	Ladder
4	1	970137	Ladder Extension
5	4	01180900	HHCS ½ x 1½
6	6	330159	Flat Washer ½
7	9	331363	Nylock ½
8	2	01147800	HHCS ½ x 1½
9	1	609255	Clevis Pin ½ x 1 3/8
10	1	330928	Klik Pin 3/16
11	2	571448	Window Glass
12	4	268078	Window Bracket
13	5'	571471	Trim Lock
14	18	331611	Nylock 5/16"
15	16	01010800	HHCS 5/16 x 1
16	2	232934	Tarp Ridge Strap
17	2	01047000	Carriage Bolt 5/16 x 1
18	1	607416	Manual Storage
19	1	03982600	Owners Manual
20	2	03963600	Remote Transmitter

Item	Qty	Part No.	Description
21	4	330522	Nylock 1/4
22	4	01057900	HHCS 1/4 x 3/4
23	4	02016400	Flat Washer 1/4
24	1	82714700	Tarp Handle Bracket
25	4	01017300	HHCS 3/8 x 1
26	6	330837	Nylock 3/8
27	1	30121800	Pivot Pan Sleeve
28	1	334946	HHCS ½ x 3
29	1	30119200	Pivot Pan Pad
30	1	82693300	Pivot Pan
31	1	473801	Cylinder 3½ x 2 3/4 -1½ Rod
32	1	472415	Cylinder 2½ x 30 -1 1/4 Rod
33	2	60967700	3" Roller
34	2	330092	HHCS ½ x 4
35	4	331694	Bushing 3/4 x 10 ga
36	2	30131700	Roller Bushing
37	1	30647200	Hose Clamp Strap
38	2	00725200	Hose Clamp 1½"
39	2	01145200	HHCS 3/8" x 3/4
	*	03825700	Tarp

Seed Tender 330 Gas
Tank & Pivot

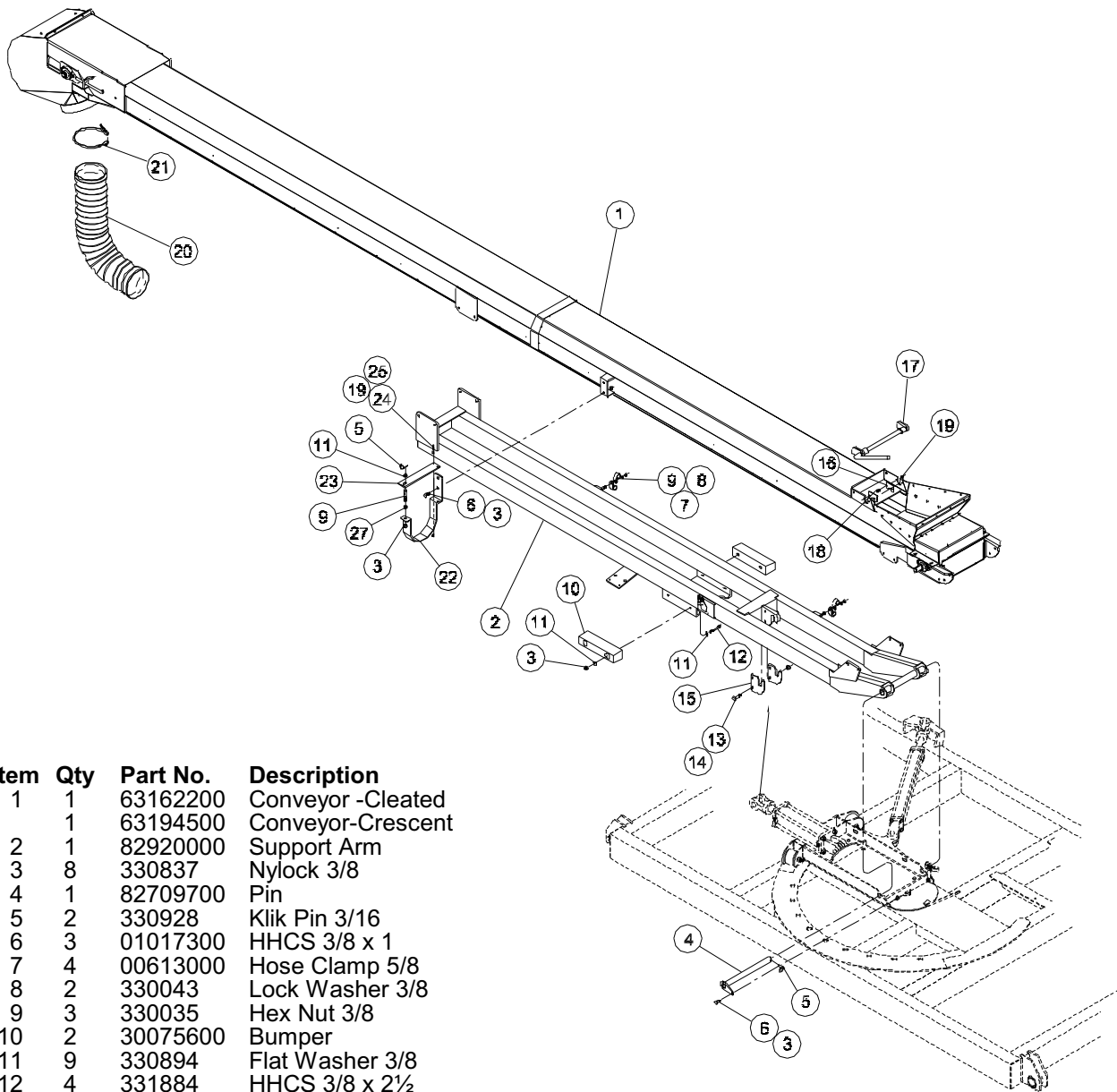


Seed Tender 330 Gas Tank & Pivot

Item	Qty	Part No.	Description
1	1	82697400	Tank & Base
2	4	00716100	Vinyl Cap
3	1	82715400	Ladder
4	1	970137	Ladder Extension
5	4	01180900	HHCS ½ x 1½
6	6	330159	Flat Washer ½
7	9	331363	Nylock ½
8	2	01147800	HHCS ½ x 1½
9	1	609255	Clevis Pin ½ x 1 3/8
10	1	330928	Klik Pin 3/16
11	2	571448	Window Glass
12	4	268078	Window Bracket
13	5'	571471	Trim Lock
14	8	331611	Nylock 5/16"
15	8	01010800	HHCS 5/16 x 1
16	2	232934	Tarp Ridge Strap
17	2	01047000	Carriage Bolt 5/16 x 1
18	1	607416	Manual Storage
19	1	03982600	Owners Manual
20	2	03963600	Remote Transmitter
21	8	330522	Nylock 1/4
22	8	01057900	HHCS 1/4 x 3/4
23	4	02016400	Flat Washer 1/4
24	1	82714700	Tarp Handle Bracket
25	11	01017300	HHCS 3/8 x 1
26	16	330837	Nylock 3/8
27	1	30121800	Pivot Pan Sleeve

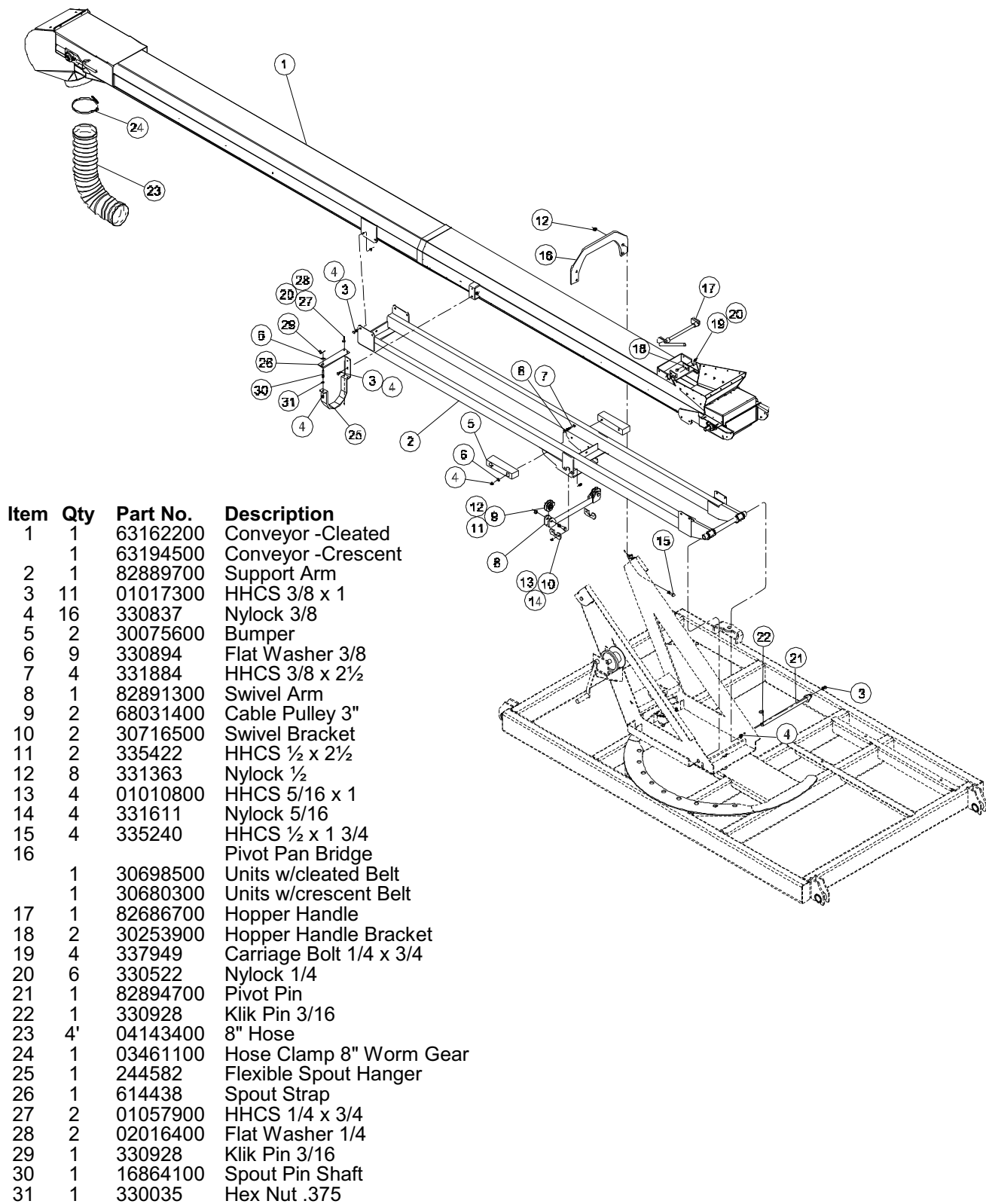
Item	Qty	Part No.	Description
28	1	334946	HHCS ½ x 3
29	1	30119200	Pivot Pan Pad
30	1	82882200	Pivot Pan
31	1	01034800	U-bolt 3/8 x 1 1/4 x 2 1/4
32	1	03651700	Insulator
33	2	60967700	3" Roller
34	2	330092	HHCS ½ x 4
35	4	331694	Bushing 3/4 x 10 ga
36	2	30131700	Roller Bushing
37	3	335919	Carriage Bolt 3/8 x 1 1/4
38	3	330894	Flat Washer 3/8
39	1	61838900	Winch Assembly -10' cable
40	1	82890500	Detent Pin
41	1	501031	Spring
42	1	30717300	Detent Pin
43	1	03433000	Eyebolt 5/16 x 1
44	1	154211	Thimble Bushing
45	2	335422	HHCS ½ x 2½
46	1	68031400	Cable Pulley 3"
47	1	06480800	Cable Thimble 1/4
48	3	02118800	Cable Clamp 1/4
49	1	30779300	Battery Box Mount
50	1	01429000	Battery Box Group
51	4	01200500	Screw 5/16 x 3/4 Self Tap
52	1	30786800	Remote Box Mount
53	1	62949300	Remote Box
	*	03825700	Tarp

Seed Tender 330 Hydraulic Support Arm & Conveyor

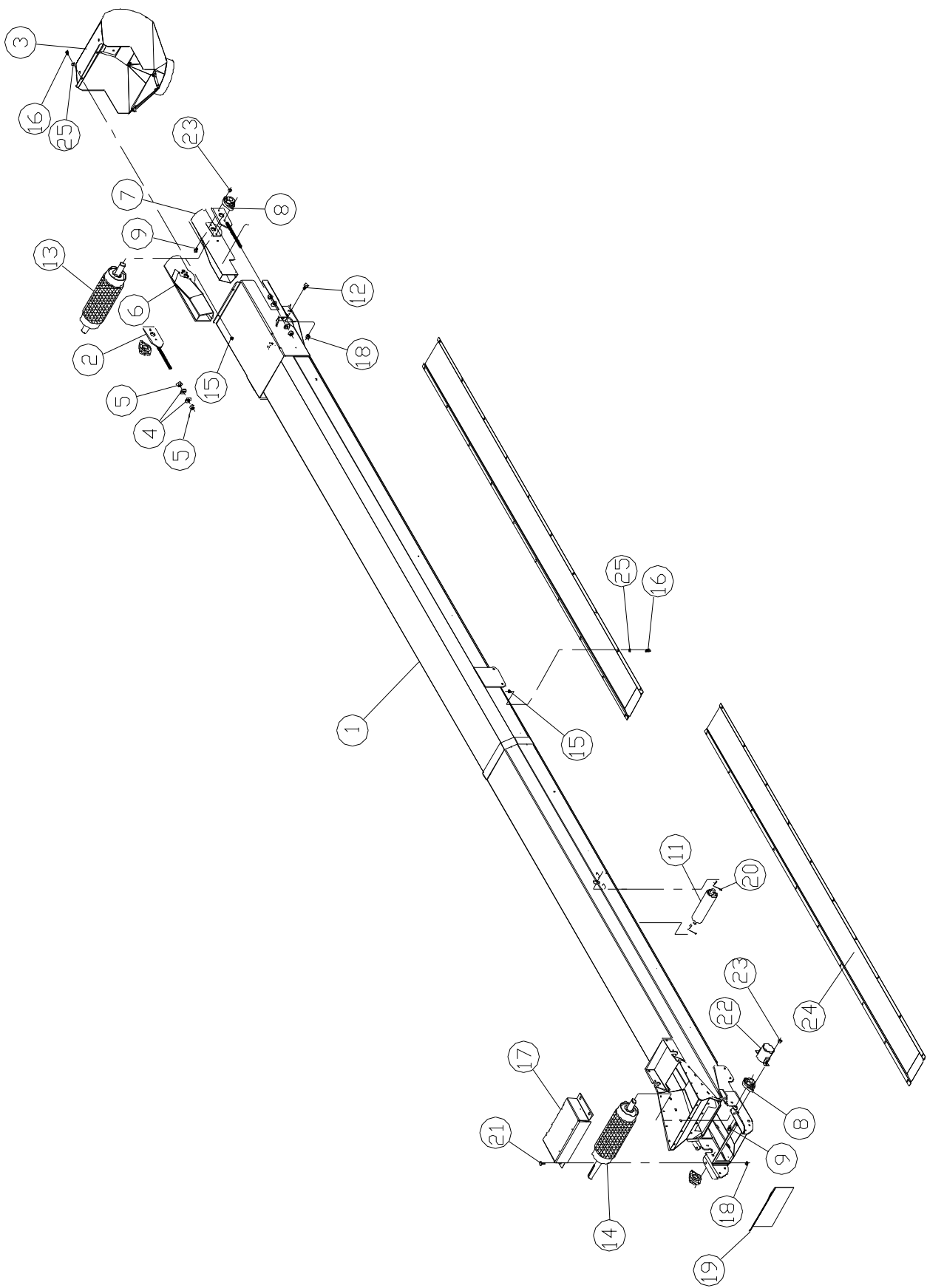


Item	Qty	Part No.	Description
1	1	63162200	Conveyor -Cleated
	1	63194500	Conveyor-Crescent
2	1	82920000	Support Arm
3	8	330837	Nylock 3/8
4	1	82709700	Pin
5	2	330928	Klik Pin 3/16
6	3	01017300	HHCS 3/8 x 1
7	4	00613000	Hose Clamp 5/8
8	2	330043	Lock Washer 3/8
9	3	330035	Hex Nut 3/8
10	2	30075600	Bumper
11	9	330894	Flat Washer 3/8
12	4	331884	HHCS 3/8 x 2½
13	2	335240	HHCS ½ x 1 3/4
14	2	331363	Nylock ½
15	2	30101000	Cylinder Mount Bracket
16	2	30253900	Hopper Handle Bracket
17	1	82686700	Hopper Handle
18	4	337949	Carriage Bolt 1/4 x 3/4
19	6	330522	Nylock 1/4
20	4'	04143400	8" Hose
21	1	03461100	Hose Clamp 8" Worm Gear
22	1	244582	Flexible Spout Hanger
23	1	614438	Spout Strap
24	2	01057900	HHCS 1/4 x 3/4
25	2	02016400	Flat Washer 1/4
26	1	16864100	Spout Pin Shaft

Seed Tender 330 Gas Support Arm & Conveyor



**Seed Tender 330 Hydraulic & Gas
Conveyor**



Seed Tender 330 Hydraulic & Gas Conveyor

#63162200

Conveyor with Cleated Belt

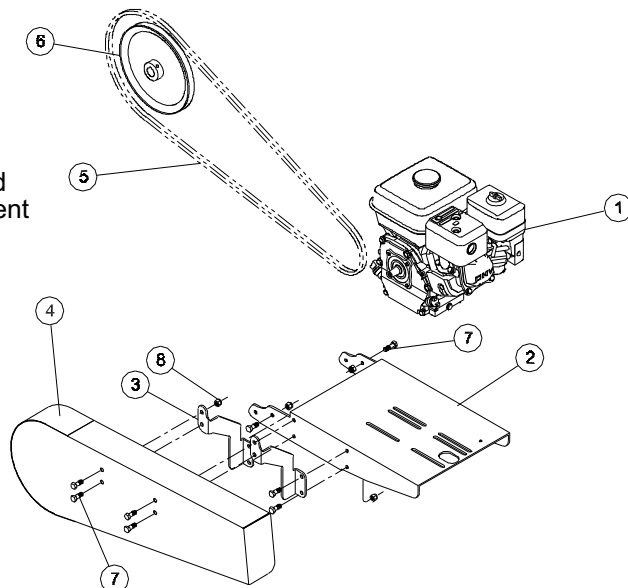
#63194500

Conveyor with Crescent Belt

Item	Qty	Part No.	Description	Item	Qty	Part No.	Description
1	1	82935800	Conveyor Pan	13	1	62937800	Head Roller
2	1	82678400	Take Up	14	1	63100200	Tail Roller
3	1	63173900	8" Spout w/Lining	15	42	330522	Nylock 1/4
4	4	330159	Flat Washer 1/2	16	42	01057900	HHCS 1/4 x 3/4
5	4	330134	Hex Nut 1/2	17	1	82937400	Tail Cover
6	1	82939000	Head Slide Left	18	6	330837	Nylock 3/8"
7	1	82938200	Head Slide Right	19	1	30918700	Gate
8	4	03001500	Bearing 1" Flange	20	8	06874200	Roller Clip
9	8	01261700	Carriage Bolt 5/16 x 1 1/2	21	4	01017300	HHCS 3/8 x 1
10	1	63107700	Cleated Belt	22	1	82502600	Shaft Guard
	1	62986500	Crescent Belt	23	8	331611	Nylock 5/16"
11	4	62940200	Roller Assembly 2" x 6 1/2"	24	2	30919500	Pan
12	2	335877	HHCS 3/8 x 1 3/4"	25	42	02016400	Flat Washer 1/4"

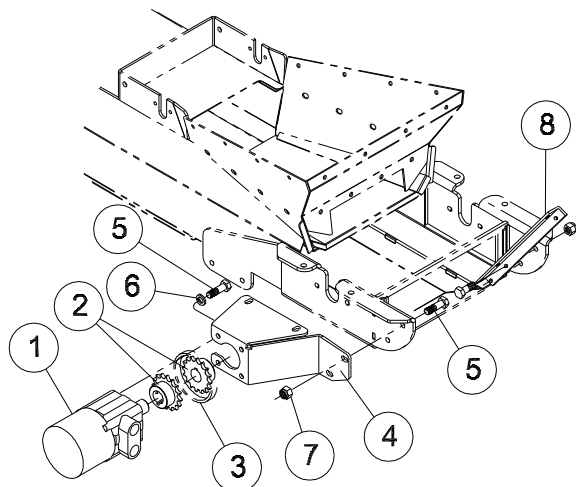
Gas Engine

Item	Qty	Part No.	Description
1	1	63155600	Engine Assembly-Cleated
	1	63046700	Engine Assembly -Crescent
2	1	30916100	Engine Mount
3	2	30715300	Guard Bracket
4	1	82936600	Guard
5	1	00042200	V-Belt B-66
6	1	04137600	Sheave 1B 10.0
7	12	01017300	HHCS 3/8 x 1
8	12	330837	Nylock 3/8

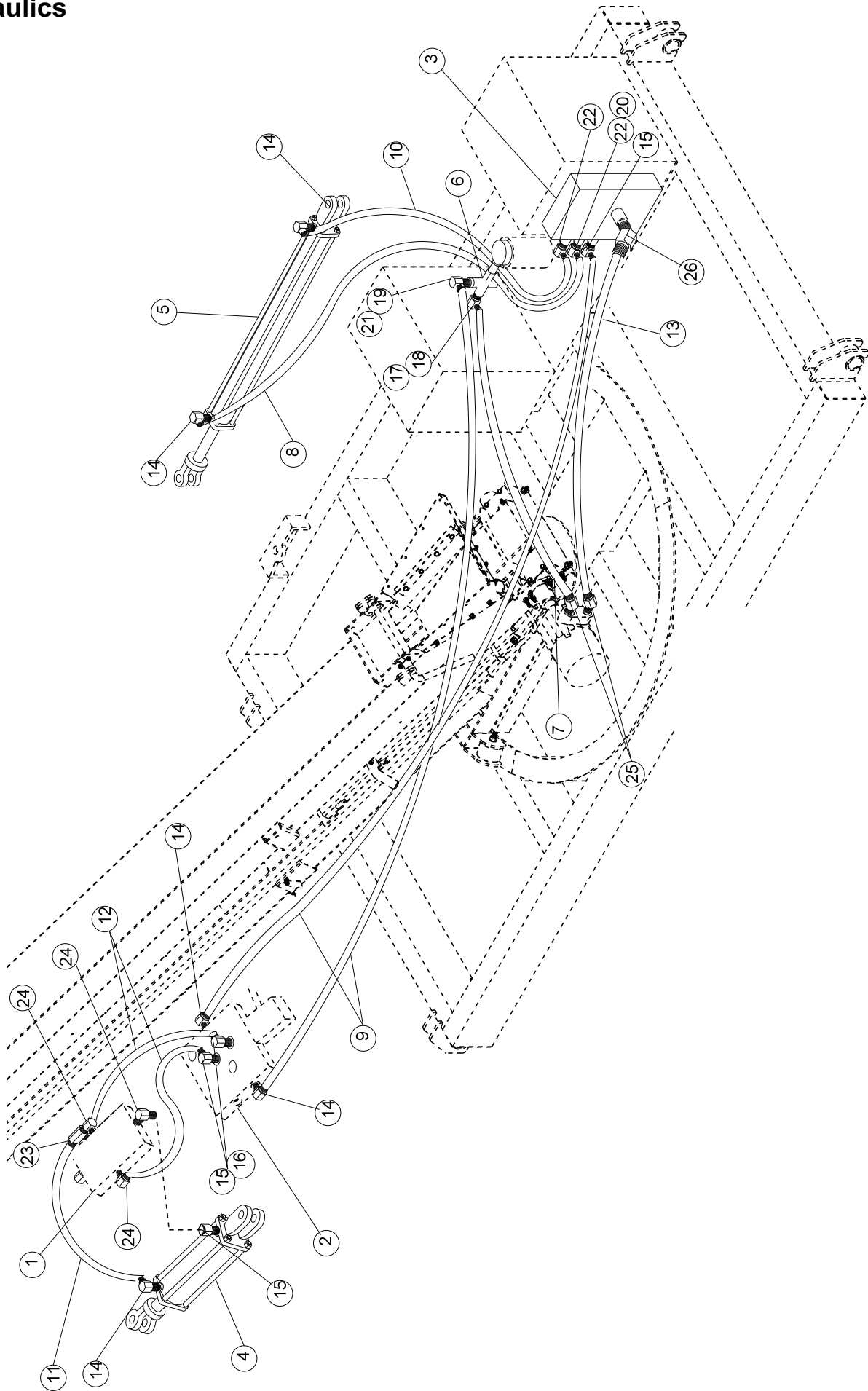


Hydraulic Motor

Item	Qty	Part No.	Description
1	1	04049300	Hydraulic Motor
2	2	05237300	Sprocket #40 16t -1"bore
3	1	05238100	Chain #40 x 16 Pitches
4	1	83048900	Motor Mount
5	8	01017300	HHCS 3/8 x 1"
6	4	330043	Lock Washer 3/8"
7	4	330837	Nylock 3/8"
8	1	243063	Hose Bracket



Seed Tender 330
Hydraulics



Seed Tender 330

Hydraulics

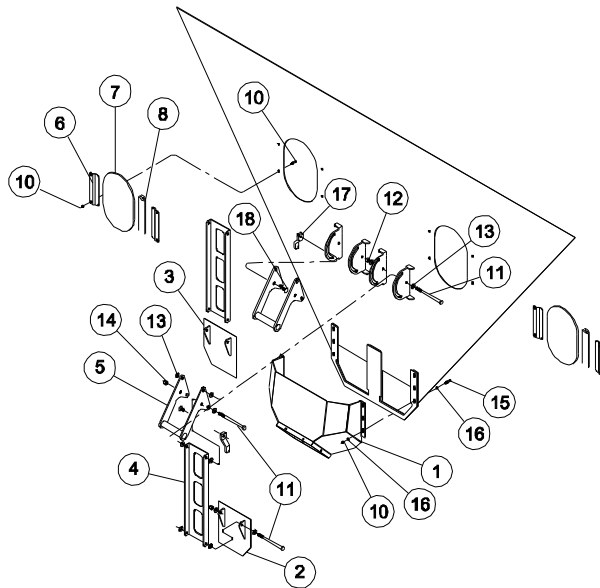
Item	Qty	Part No.	Description
1	1	473835	Hyd Valve Counter Balance
2	1	476036	Hyd Valve Sole & Hand 12GPM
3	1	473827	Hyd Power Pk W/Valve
4	1	473801	Cyl 3.5 x 2.75 x -1.5" .75-16
5	1	472415	Cyl 2.5 x 30 x -1.25R
6	1	474452	Pipe Cross .750NPTF
7	1	473892	Hose .500 x 84 .875/1.063 FJSW
8	1	473926	Hose.250x165 .438 FJSW / .563 FJS
9	2	473934	Hose.250x156 .438 FJSW / .563 FJS
10	1	473959	Hose.250x132 .438 FJSW / .563 FJS
11	1	473967	Hose.250x15 .438 FJSW / .563 FJS
12	2	473975	Hose.250x57 .438 .563 FJS

Item	Qty	Part No.	Description
13	1	473983	Hose.500x96 .875 JICFSW
14	5	472456	Adpt 90D .438 JICM / .750 MOR
15	3	473850	Adpt STR .750MOR / .563 JICM
16	1	469049	Adpt 90D .563 JICM / .563 MOR
17	1	472134	Adpt 45D 1.063 JICM / 1.063 JICFSW
18	1	473868	Adpt STR .750NPTM / 1.063 JICM
19	1	474460	Pipe Hex Bush .750-.375
20	1	00593400	Adpt STR .563MOR / .563 JICM
21	1	00563700	Adpt 90D .375NPTM / .563 JICM
22	2	00598300	Adpt 90D .563MOR / .563 JICM
23	1	03386000	Adpt Tee .563 JICM / .563 JICFSW
24	3	00839100	Adpt 90D .563MOR / .563 JICFSW
25	2	00542100	Adpt 45D .875MOR / .875 JICM
26	1	00978700	Adpt 45D .750MOR / .875 JICM

Seed Tender 330 Conveyor

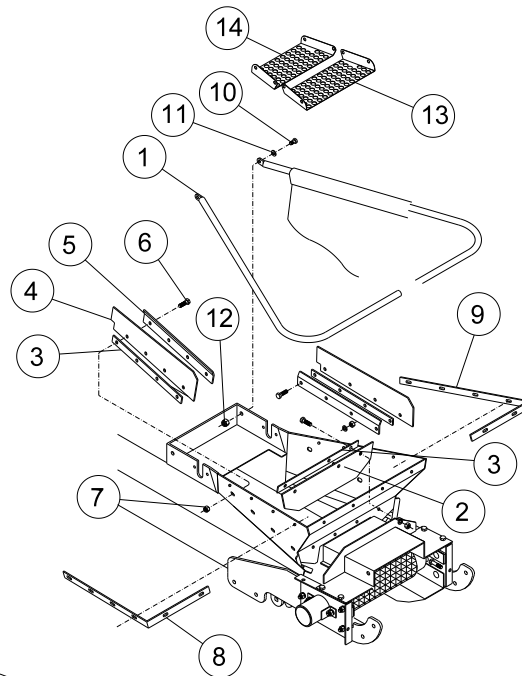
Tank Hopper

Item	Qty	Part No.	Description
1	1	82710500	Hopper
2	1	82712100	Gate Left
3	1	82711300	Gate Right
4	2	30122600	Gate Tray
5	2	82713900	Gate Handle
6	4	268078	Window Bracket
7	2	571448	Window
8	5'	571471	Trim Lock
9	8	01010800	HHCS 5/16 x 1
10	22	331611	Nylock 5/16
11	6	334961	HHCS 3/8 x 6
12	2	330035	Hex Nut 3/8
13	24	330894	Flat Washer 3/8
14	4	330837	Nylock 3/8
15	6	01011600	HHCS 5/16 x 1 1/4
16	12	330852	Flat Washer 5/16
17	2	30356000	Handle
18	2	330548	Carriage Bolt 3/8 x 3/4



Flex Hopper

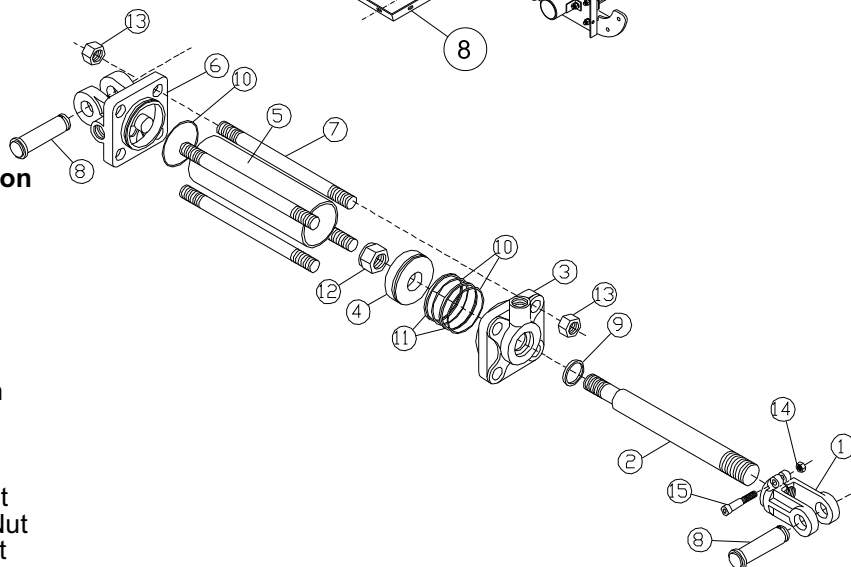
Item	Qty	Part No.	Description
1	1	62971700	Flex Hopper
2			Skirtboard Back
	1	30132500	Unit w/ cleated belt
	1	30386700	Unit w/crescent belt
3	3	19992700	Back Up Strap 10ga
4	2	19991900	Skirtboard Side
5	2	19990100	Back Up Strap 12ga
6	12	01010800	HHCS 5/16 x 1
7	12	331611	Nylock 5/16
8	1	19998400	Hopper Back Up Strap Lt
9	1	20964300	Hopper Back Up Strap Rt
10	2	01017300	HHCS 3/8 x 1
11	2	330894	Flat Washer 3/8
12	2	330837	Nylock 3/8
13	1	31087000	Screen Rear
14	1	32430100	Screen Front



Cylinders

#472415 2 1/2" x 30" - 1 1/4" Rod
#473801 3 1/2" x 2 3/4" - 1 1/2" Rod

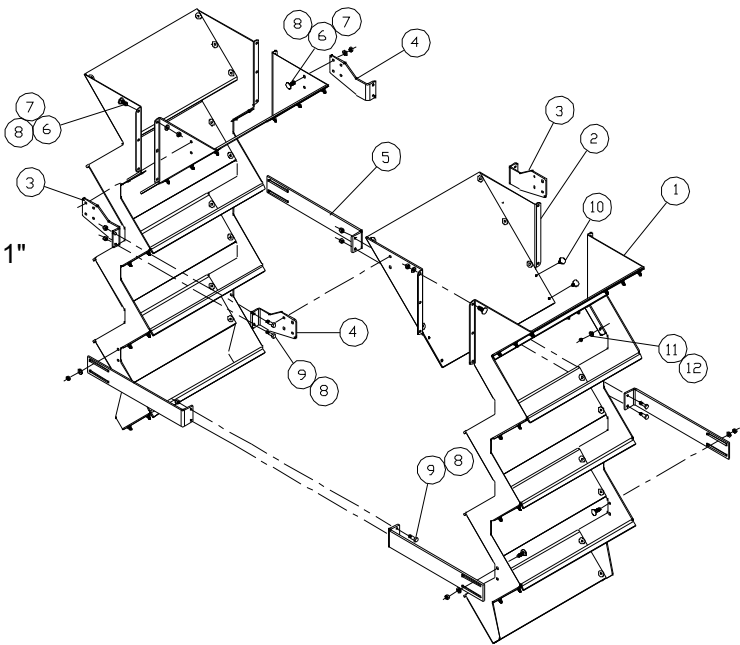
Item	Part No.	Part No.	Description
1	461483	472977	Clevis
2	460824		Rod
3	472720	469726	Head
4	472746	464479	Piston
5	472753	470526	Tube
6	472738		Base
7			Tie Rod
8	460451	463133	Clevis Pin
9	460329	460907	Wiper
10		464446	O-Ring
11		464487	Back up
12	460394	464495	Piston Nut
13		464537	Tie Rod Nut
14	460691	460691	Clevis Nut
15	460477	460477	Capscrew
	460485	463638	Seal Kit



Seed Ladder Kit

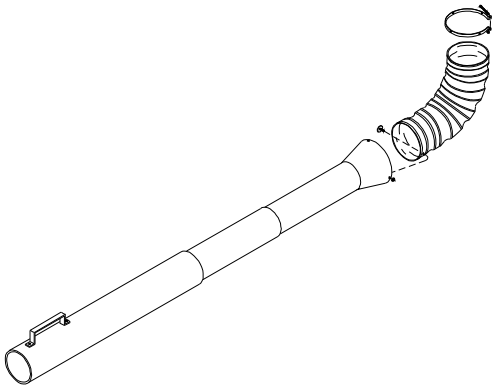
#63159800

Item	Qty	Part No.	Description
1	2	63160600	Ladder Assembly
2	2	63153100	Ladder Hopper
3	2	30908800	Top Mount Left
4	2	30909600	Top Mount Right
5	4	30902100	Support leg
6	28	01047000	Carriage Bolt 5/16" x 1"
7	28	330852	Flat Washer 5/16"
8	36	331611	Nylock 5/16"
9	8	01011600	HHCS 5/16" x 1 1/4"
10	8	01065200	Bolt 1/4-20 x 1"
11	8	02016400	Flat Washer 1/4"
12	8	330522	Nylock 1/4"

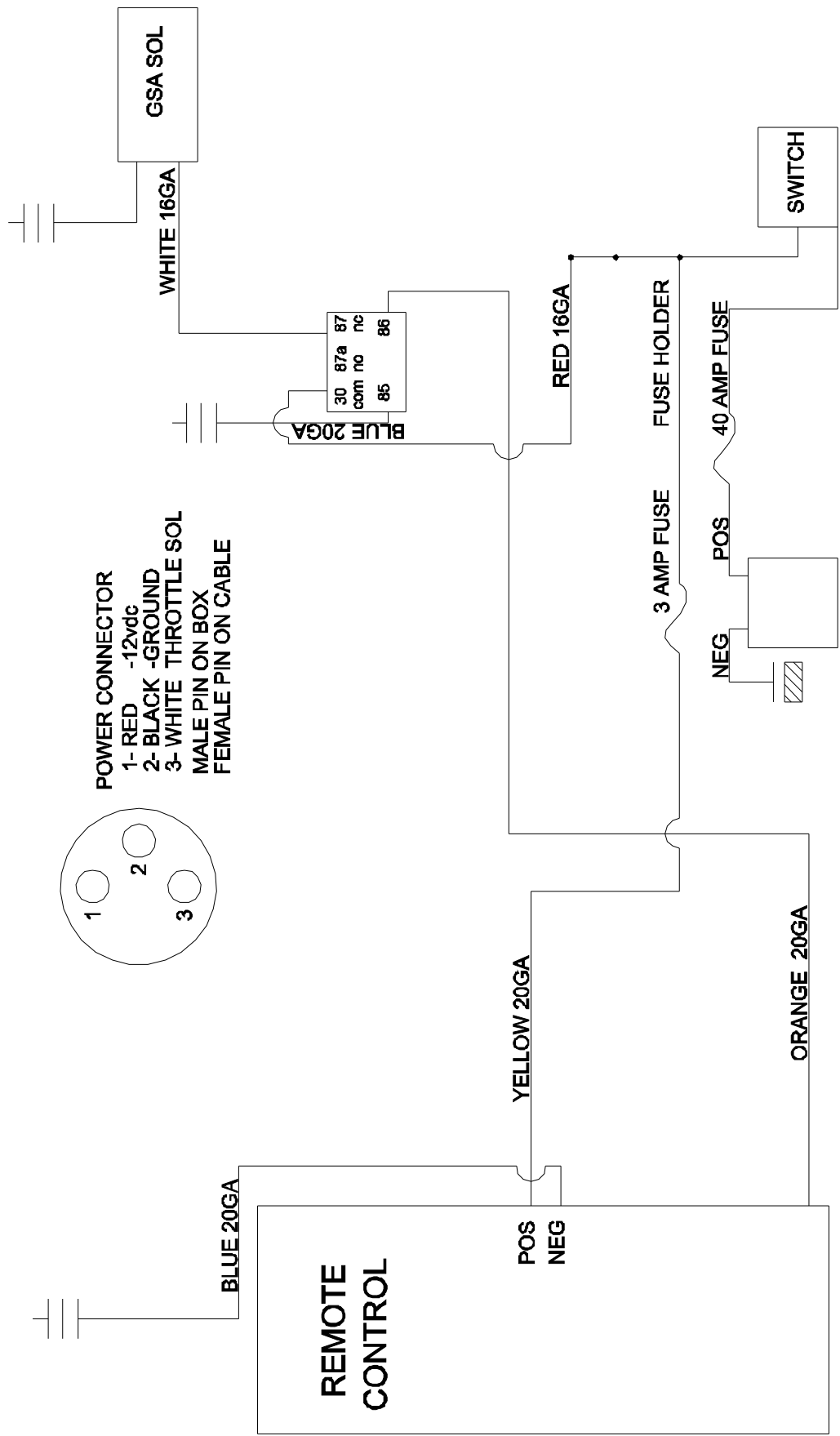


Telescoping Spout -8"

#04145900



Remote Control Wiring Diagram



Remote Control

To Program Remote:

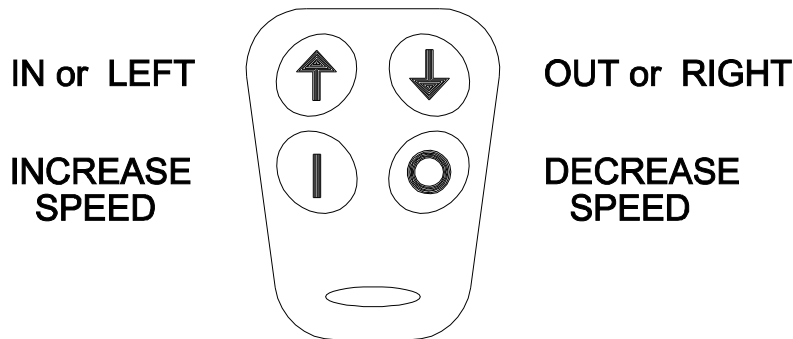
Power up the unit. When you do so, the LED on the receiver unit will flash RED four times. This indicates that the unit has received power. There is magnetically controlled switching circuitry embedded in the receiver unit. Place a fairly powerful magnet over the receiver "learn" area (near R11) for a brief moment (3 seconds), and then remove it. The LED will go to constant RED state. Now immediately press any button on the transmitter you are attempting to learn in. The LED will go to a GREEN/YELLOW color. This confirms that the receiver has picked up a signal from the transmitter, and subsequently learned that signal. Communication has been established, and it is now ready to function properly.

Troubleshooting:

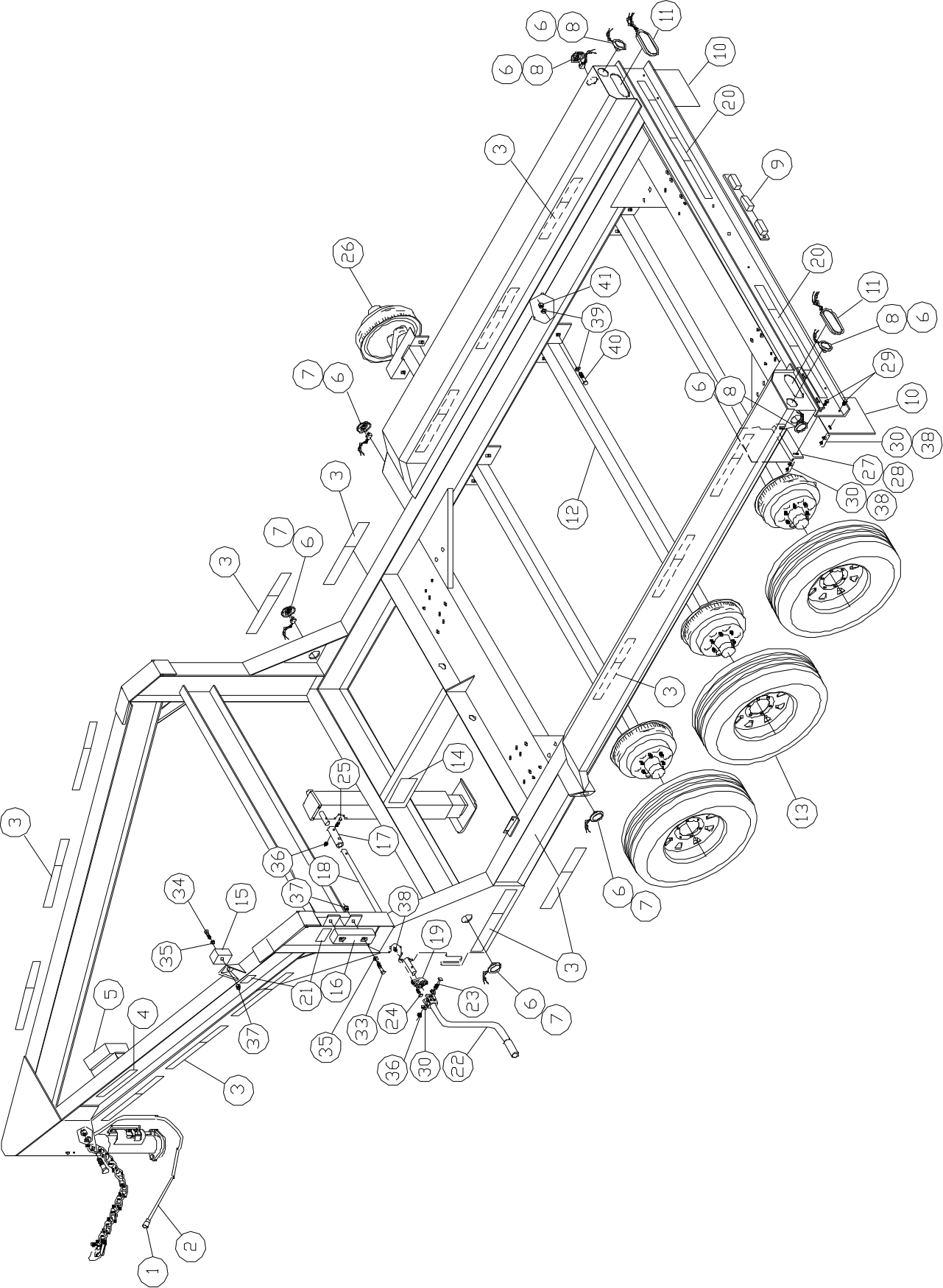
Should the above procedure not complete successfully, wait until the LED light goes out, and repeat the procedure. If for any reason you experience a second failure of the learn procedure, do the following. Place the magnet on the learn area and the LED will go to a constant RED state. Leave the magnet in place on the receiver until the LED light goes out (approximately 10 seconds). This action completely clears the receiver's memory. It's akin to reformatting, or freeing up all of the space on a computer hard drive. Once you have cleared the memory, proceed with the standard learn procedure detailed above for each of the key fob transmitters you wish to use with the device. If, after all of the procedures detailed above are completed, the unit is still not functioning, check the battery in the transmitter once again. (Occasionally, even new batteries fail, or are defective from the factory. If you have a voltage meter, confirm that battery voltage is at least 2.7 volts.) If that still does not solve the problem, contact CrustBuster/Speed King, Inc. At (620) 227-7106.

Battery:

It is recommended that the battery be replaced every year.



Trailer

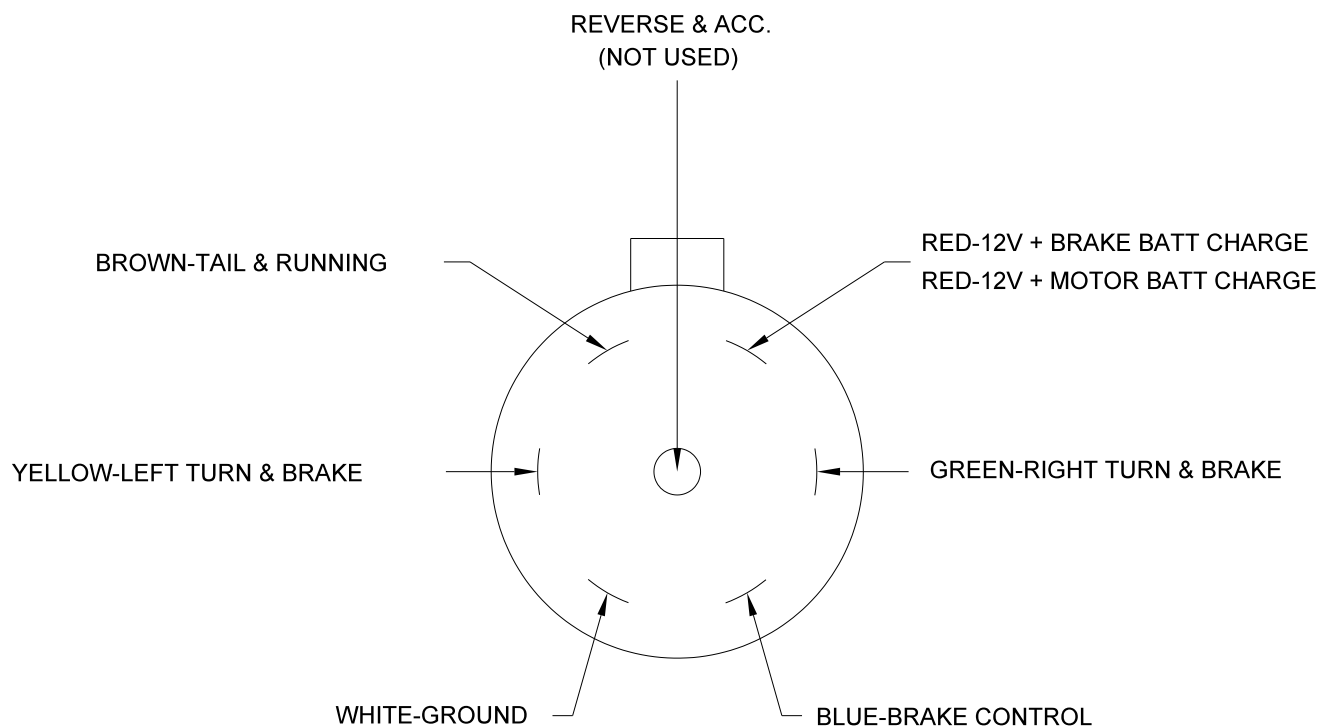


Trailer

#035899 - 5th Wheel Trailer

Item	Part No.	Description	Item	Part No.	Description
1	609909	Connector 6 Contact Male	19	03001500	Bearing 1" Flange Mount
2	609917	Conductor Wire 14-6	20	03726700	Reflector Tape
3	03726700	Reflector Tape 2" Red/White	21	05315700	Decal Pinch Point
4	611384	5 th Wheel 4 Point Safety Decal	22		Jack Handle
5	609677	Break Away Kit W/Box & Battery	23	330886	HHCS 3/8 x 3 Flat Washer & Nylock
6	609644	Light Mounting Kit	24	01261700	Carriage Bolt 5/16 x 1½ Lock Washer & Hex Nut
7	613364	Clearance Light Amber	25	331884	HHCS 3/8 x 2½
8	613737	Clearance Light Red	26	611483	Dust Cap
9	613372	Light Bar Red	27	271734	Fender Wire Shield Left
10	571653	Gravel Guard	28	271742	Fender Wire Shield Right
11	613810	Red Oval Tail Light Complete	29	01010800	HHCS 5/16 x 1
12	610121	Trailer Axle 7000#	30	330852	Flat Washer 5/16
13	531293	Mounted Tire & Rim ST235/80/R16-8	31	330811	Hex Nut 5/16
14	609727	Vin Label	32	330845	Lock Washer 5/16
15	10746600	Dock Bumper	33	335422	HHCS ½" x 2½ w/Flat Washer & Nylock
16	30075600	Bumper 2½ x 2 x 9 5/8	34	334946	HHCS ½" x 3 w/Flat Washer & Nylock
17	122481	Jack Shaft Coupler Spool			
18	312843	Jack Shaft (36 ½")			

Trailer RV Plug



NOTE: LOOKING FROM BACK OF PLUG



P. O. Box 526

Spearville, Kansas 67876

(620) 227-7106
