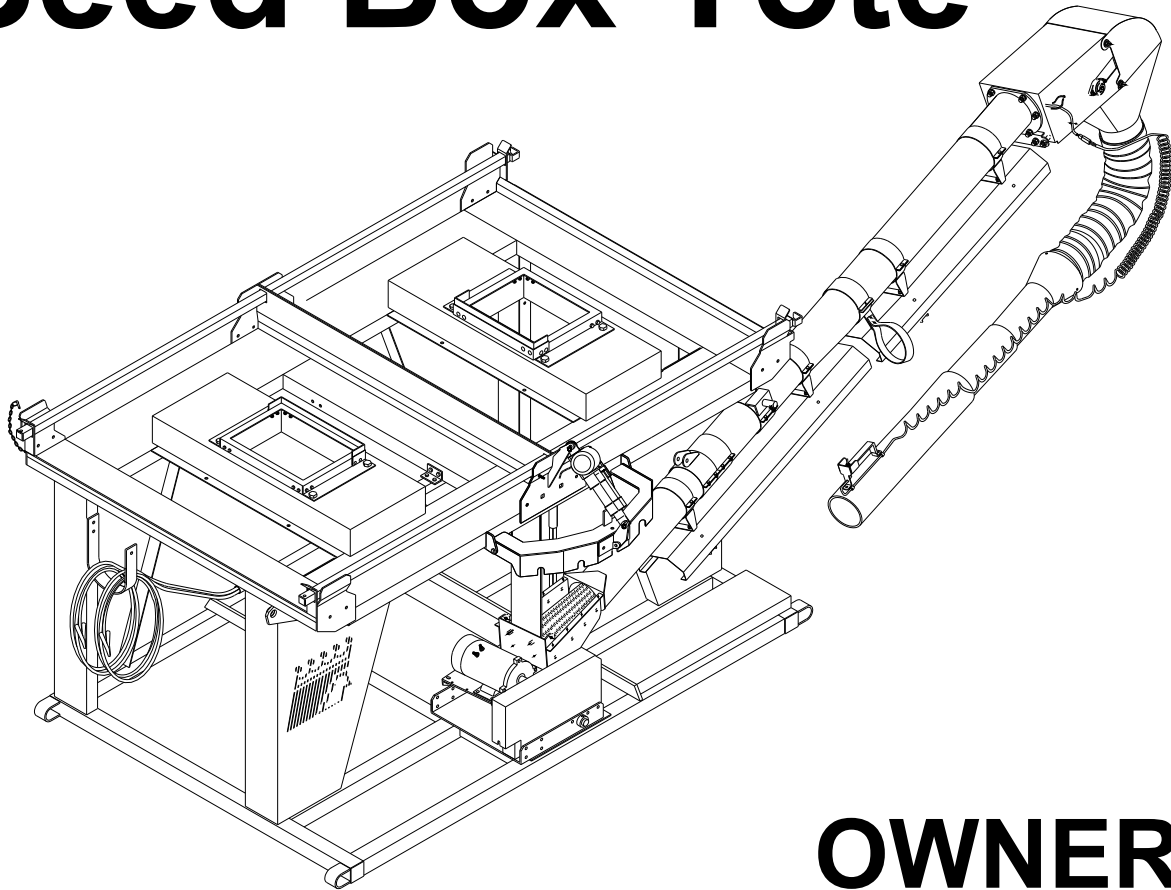




P.O. Box 526 - Spearville, Kansas 67876 - (620) 227-7106
crustbuster.com

Seed Box Tote



OWNER'S MANUAL

Table of Contents

Warranty Information	1	Stand - Gas (Prior 2012)	26-27
Operator Qualifications	2	Feed Tube - Electric	28-29
Safety and Warnings	3-6	Hopper	29
Fuel Valve	7	Guard - Electric	29
Assembly	7-8	Feed Tube - Gas	30-31
Loading Seed in Tote Boxes	9	Feed Tube - Gas (Prior 2012)	32-33
Wiring Diagram	10-11	Hopper	33
Belt Assembly	11-13	Guard - Gas	33
Operation, Maintenance, & Belt Training	14-15	Spouts	34
		Flexible Tube	35
Dimensions	16-17	Engine Assembly	36-37
		Talc	38
Repair Parts		Actuator Kit 2 Box 2 Bar Remote	39
Stand - Electric w/Remote	18-19	Actuator Kit 2 Box 2 Bar Hardwire	40
Stand - Electric (Prior 2012)	20-21	Actuator Kit 2 Box 2 Bar Electric	41
Stand - Gas w/Remote	22-23	Remote Control	42
Stand - Gas	24-25	2 Box Trailer Parts	43-44
		2 Box Scale Kit Illustration	45

Identification

Your Seed Tender is identified by a Serial Number and Model Number. Record these numbers in the spaces provided in this manual and refer to them when ordering parts or requesting service.

Serial Number	Model Number

Warranty

WARRANTY: In addition to the implied warranties of fitness and of merchantability, CrustBuster®/Speed King, Inc. warrants new products sold by it to be free from defects in workmanship and material for a period of 12 months, from the date of delivery to the first user customer. Warranty on purchased parts (cylinder, blades, bearings, shanks, etc.) will be the same as that offered by the appropriate manufacturer of these parts.

EXCLUSIONS: No warranty of any kind is made by CrustBuster®/Speed King, Inc. with regard to new products which have been subject to operation in excess of recommended capacities, misuse, abuse, negligence, or accident, or have been altered or repaired in any manner not authorized by CrustBuster®/Speed King, Inc. CrustBuster®/Speed King, Inc. is constantly striving to improve its products. Changes in design and improvement will be made whenever CrustBuster®/Speed King, Inc. believes the efficiency of its products will be improved thereby, but without incurring any obligation to incorporate such improvements in any products which have been shipped or are in service. No obligation exists for compensation of unauthorized repairs or modifications without prior approval. And in no event will CrustBuster®/Speed King, Inc. be liable for consequential damages, such as but not limited to: downtime, delayed or late tillage or planting, etc.

WARRANTY REGISTRATION: This warranty is not valid unless registered with CrustBuster®/Speed King, Inc. within 10 days from the date of purchase. It is the sole responsibility of the selling retail dealer to fill out the registration forms and see that they are properly filed with CrustBuster®/Speed King, Inc. This can be done at crustbuster.com.

WARRANTY PROCEDURE: Should any part fail to conform with this warranty, CrustBuster®/Speed King, Inc. will repair or replace the part or parts which do not conform. If a part is defective, take it to your authorized CrustBuster® Farm Equipment Dealer immediately, along with your warranty registration, and complete the proper forms requesting a warranty adjustment. Our representative will pick up the part to be returned to the factory for examination. If the customer (first user) requests that a new part be substituted for the old part, a new part will be charged to the dealer who will in turn charge the customer. If the part is found by us to be defective, a credit for the part will be given to the dealer to be passed on to the customer. If the dealer or customer wishes to repair the part, this will be done only if authorized by CrustBuster®/Speed King, Inc. This warranty procedure is in addition to all remedies authorized by law.

CRUST BUSTER®/SPEED KING, INC.
Box 526
Spearville, KS 67876

Operator Qualifications

Operation of this Seed Tote shall be limited to competent and experienced persons. In addition, anyone who will operate or work around this equipment must use good common sense. In order to be qualified, he or she must also know and meet all other requirements, such as:

1. Some regulations specify that no one under the age of 16 may operate power machinery. It is your responsibility to know what these regulations are in your area or situation.
2. Current OSHA regulations state in part: "At the time of initial assignment and at least annually thereafter the employer shall instruct EVERY employee in the safe operation of servicing of all equipment with which the employer is, or will be involved."
3. Unqualified persons are to STAY OUT of the work area.
4. A person who has not read and understood all operating and safety instructions is not qualified to operate the machinery.



**FAILURE TO READ THIS SEED TENDER MANUAL AND ITS
SAFETY INSTRUCTIONS IS A MISUSE OF THE EQUIPMENT.**



Sign Off Sheet

As a requirement of OSHA, it is necessary for the employer to train the employee in the safe operation and safety procedures with this Seed Tender. We include this sign off sheet for your convenience and personal record keeping.

DATE	EMPLOYER	EMPLOYER'S SIGNATURE



BE ALERT!

Your Safety is involved.

General Safety Statement



WATCH FOR THIS SYMBOL. IT POINTS OUT IMPORTANT SAFETY PRECAUTIONS. IT MEANS "ATTENTION — BECOME ALERT!"

YOUR SAFETY IS INVOLVED.

It is your responsibility as an owner, operator, or supervisor to know and instruct everyone using this Seed Tender at the time of initial assignment and at least annually thereafter, of the proper operation, precautions, and work hazards which exist in the operation of this Seed Tender in accordance with OSHA Regulations.

Safety Is No Accident

The following safety instructions, combined with common sense, will save your equipment from needless damage and the operator from unnecessary exposure to personal hazard. Pay special attention to the caution notes in the text. Review this manual at least once each year with new and/or experienced operators.



1. Read and understand the operator's manual before operating this Seed Tender. Failure to do so is considered a misuse of the equipment.
2. Make sure Seed Tender is secure before operating.
3. Always keep children away from Seed Tender when operating.
4. Make sure everyone that is not directly involved with the operation is out of the work area before beginning the operation.
5. Make sure all safety devices, shields, and guards are in place and are functional before beginning the operation.
6. Shut off power to adjust, service, or clean.
7. Keep hands, feet, and clothing away from moving parts. It is a good idea to remove all jewelry before starting the operation.
8. Visually inspect the Seed Tender periodically during operation for signs of excessive vibration, loose fasteners, and unusual noises.
9. Before transportation unit, make sure tube assembly is locked into place and safety strap is on and secure.
10. Keep box tote on level surface.

DANGER: Indicates an imminently hazardous situation which, if not avoided, will result in death or serious injury.



WARNING: Indicates a hazardous situation which, if not avoided, could result in death or serious injury.



CAUTION: Indicates a potentially hazardous situation which, if not avoided, may result in minor or moderate injury.



NOTICE: Used to address practices not related to physical injury.



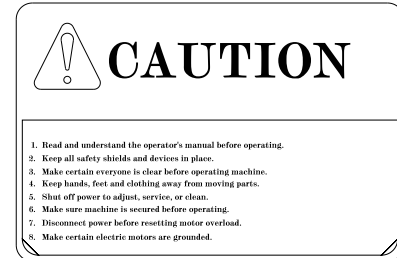
Safety Decals

REMEMBER: If Safety signs have been damaged, removed, become illegible or parts replaced without decals, new decals must be applied. New decals are available from your authorized distributor or factory. Individual decals shown below.

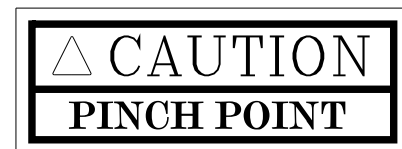
#05326400



#05303300



#05315700



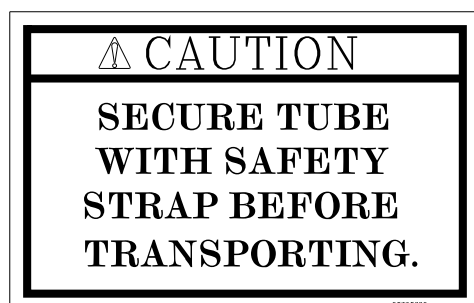
#05327200



#05312400



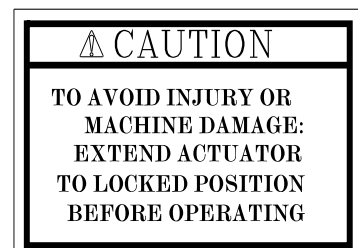
#05325600



#05328000



#05330600





Danger

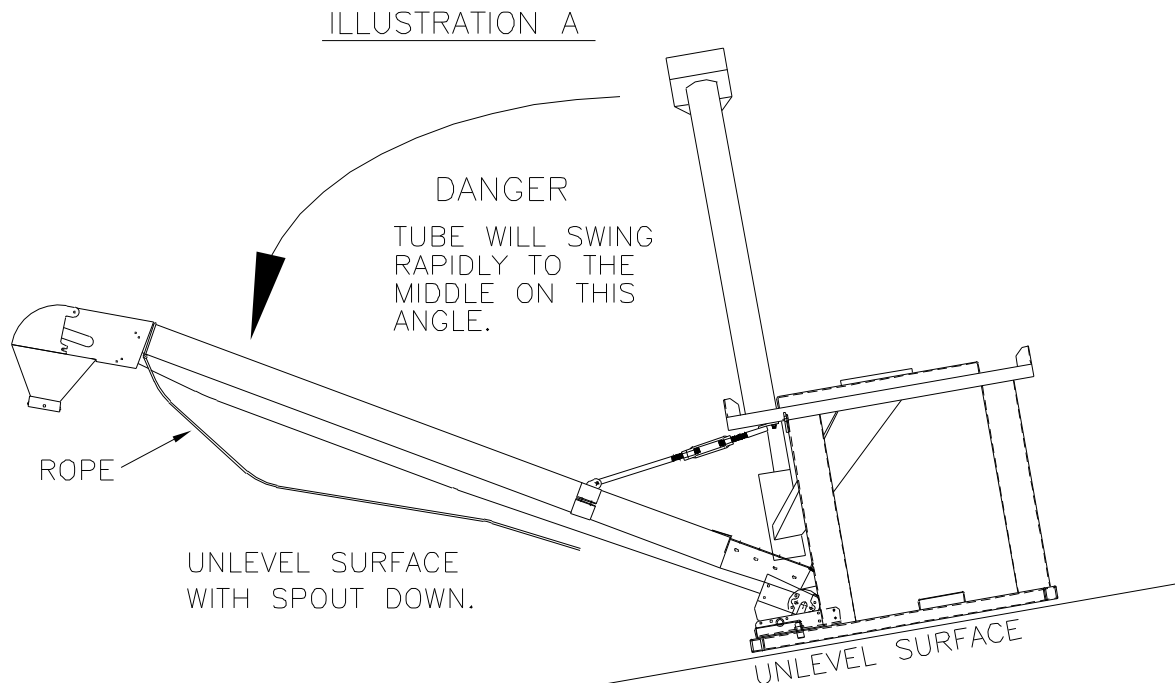
**BE ALERT! YOUR PERSONAL SAFETY IS INVOLVED.
ALWAYS PARK TENDER ON LEVEL SURFACE TO UNLOAD.**

Before releasing safety strap that secures tube assembly, make sure tender is sitting on a level surface.

If parked on an unlevel surface, and the tube assembly is not restrained, it will swing rapidly and out of control to one side or the other.

The rope attached to the tube is to assist in guiding the tube. If tube is swinging out of control, the rope may not control the tube.

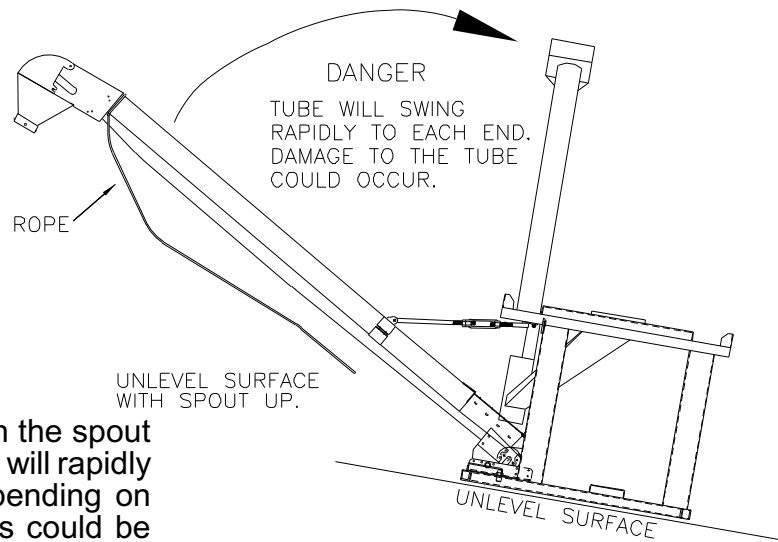
If parked on an unlevel surface with the spout side down, (See *illustration A*) the tube will rapidly swing out.





Danger

ILLUSTRATION B

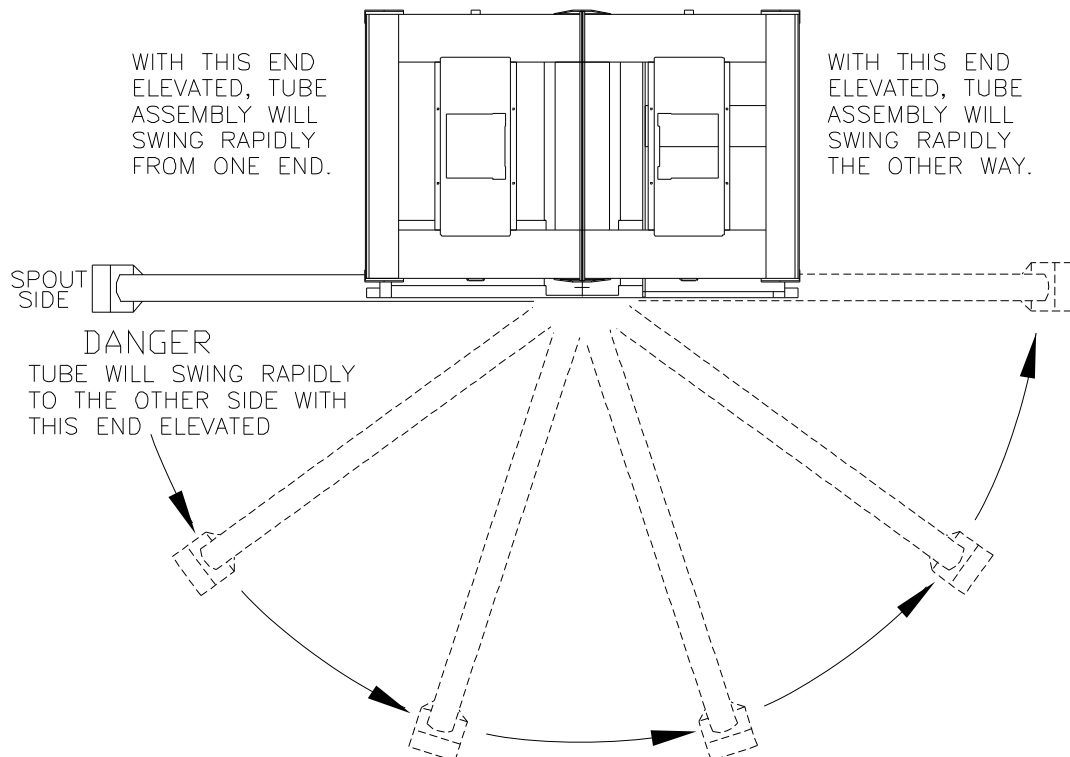


If parked on an unlevel surface with the spout side up, (See *illustration B*) the tube will rapidly swing to one end or the other depending on which side the gravity pulls it. This could be very hazardous for anyone standing in its path. Be very cautious of situation.

If parked on an unlevel surface with the spout side up, (See *illustration C*) the tube will rapidly swing from one end to the other.

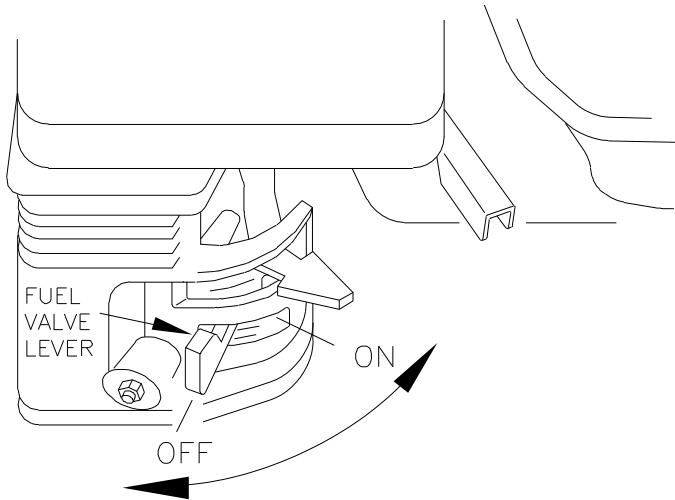
This could be very hazardous for anyone standing in its path. Be very cautious of this situation. This could also cause damage to the tube assembly.

ILLUSTRATION C





CAUTION



FUEL VALVE

When engine is not in use, leave the fuel valve lever in the OFF position to prevent

- carburetor flooding
- fuel in the oil crank case because of transporting vibrations
- the possibility of fuel leakage.

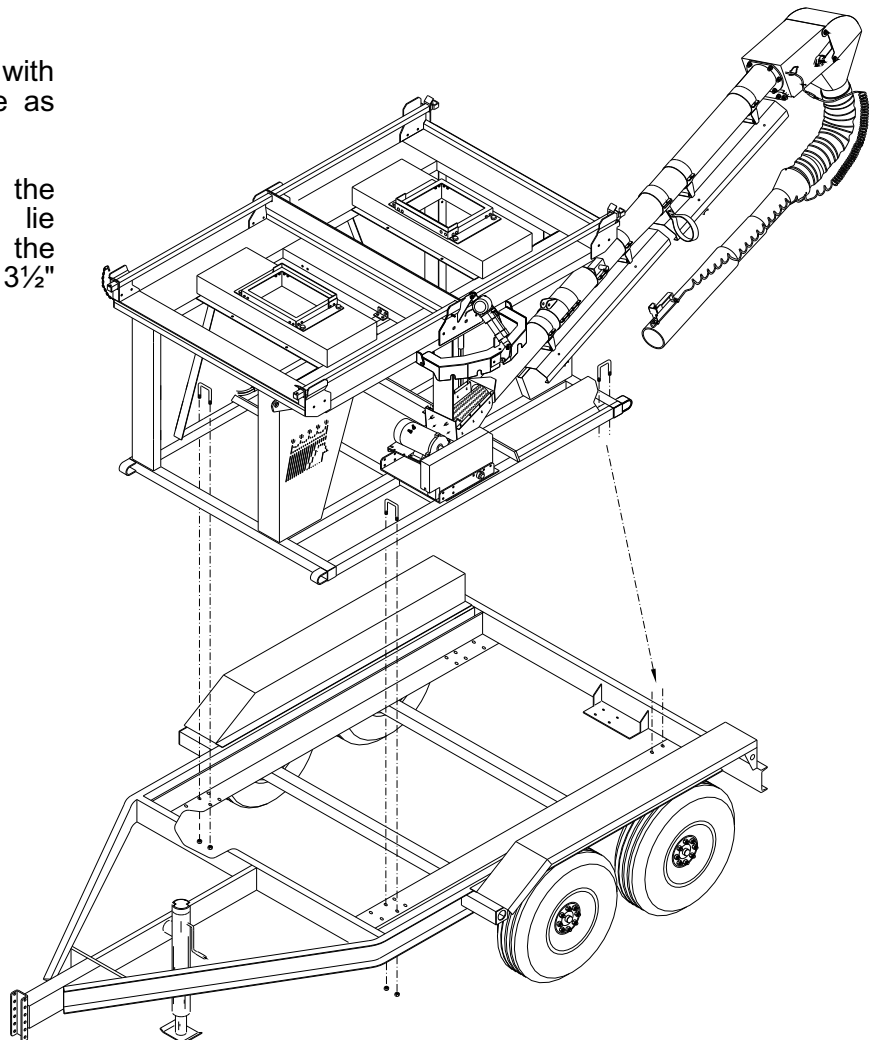
See engine owner's manual to help you avoid other damage to your engine.

NOTE: CrustBuster recommends fuel valve be shut off and the motor run completely out of fuel before transporting.

Assembly

If trailer has been purchased with the Seed Box Tote, assemble as follows:

Center the Seed Box Tote on the trailer. The tubes should lie between mounting holes on the trailer. Attach using $\frac{1}{2}$ " x $2\frac{1}{2}$ " x $3\frac{1}{2}$ " u-bolts and $\frac{1}{2}$ " nylock nuts. **Reference Illustration.**



Assembly

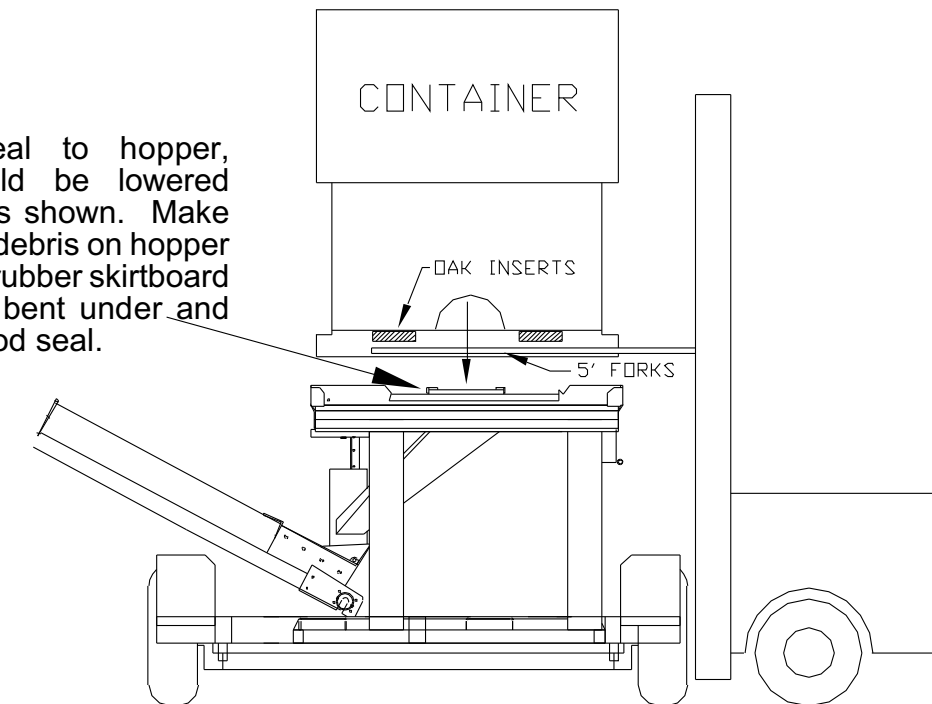


CAUTION

ALWAYS LIFT THE CONTAINER FROM THE BOTTOM. NEVER USE STRAPS OR LIFT BY TYING ANYTHING TO THE SIDES OF THE CONTAINER. REQUIRES MINIMUM 3000 LB. FORKLIFT TO PICK UP FULL CONTAINER. OAK INSERTS, LOCATED IN THE BASE OF THE CONTAINER, REDUCE LIPPAGE ON FORKLIFT FORKS AND PROVIDE STRUCTURAL SUPPORT. RECOMMENDED FORKS ON FORKLIFT TO BE AT LEAST 5 FEET TO MAKE SURE FORKS EXTEND IN AND REST ON OAK INSERTS.

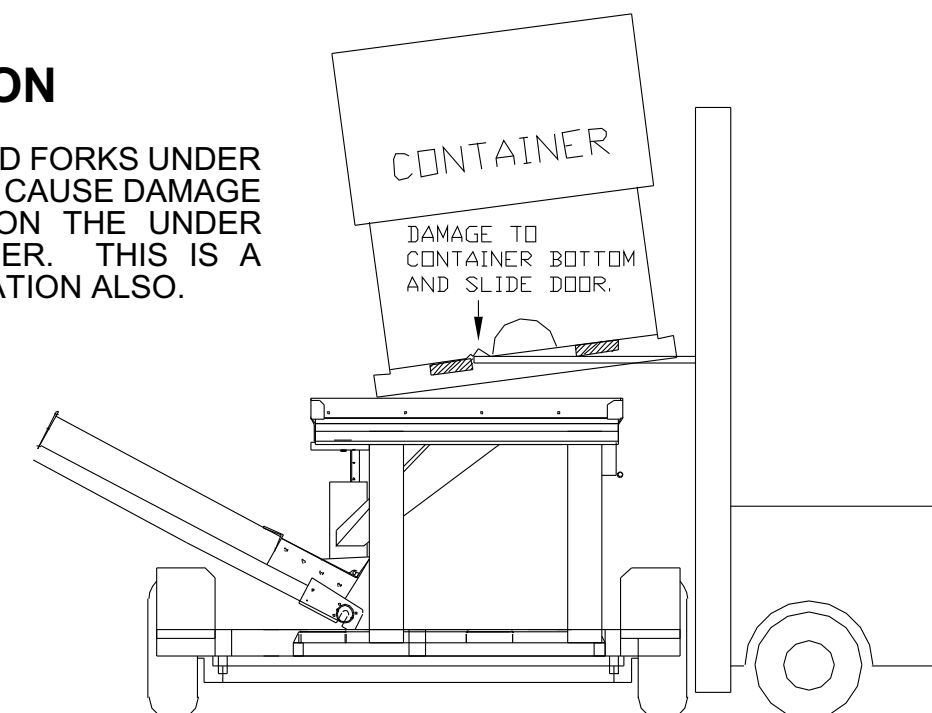
NOTE:

For proper seal to hopper, container should be lowered straight down as shown. Make sure there is no debris on hopper top. Make sure rubber skirtboard deflector is not bent under and preventing a good seal.



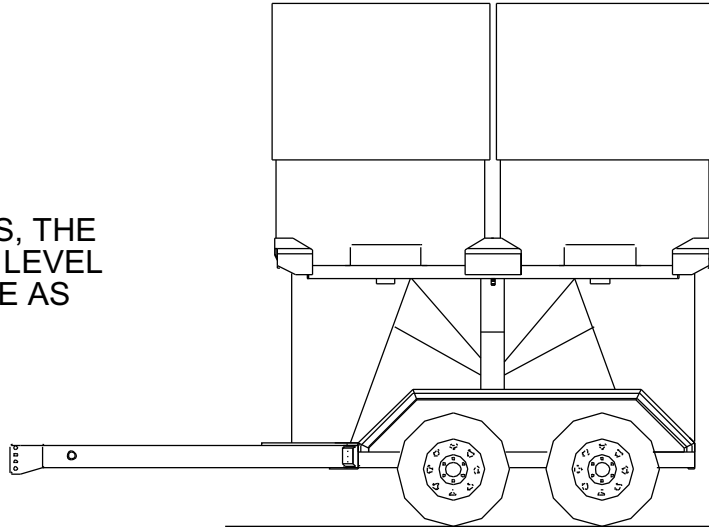
CAUTION

FAILURE TO EXTEND FORKS UNDER OAK INSERTS WILL CAUSE DAMAGE TO SLIDE DOOR ON THE UNDER SIDE OF CONTAINER. THIS IS A DANGEROUS SITUATION ALSO.



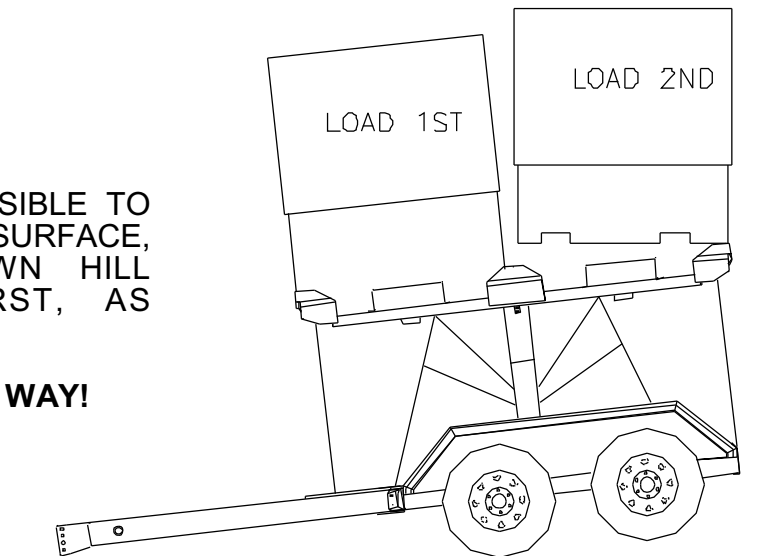
Seed Box Loading

TO LOAD SEED BOXES, THE TOTE SHOULD BE ON LEVEL GROUND OR SURFACE AS SHOWN.



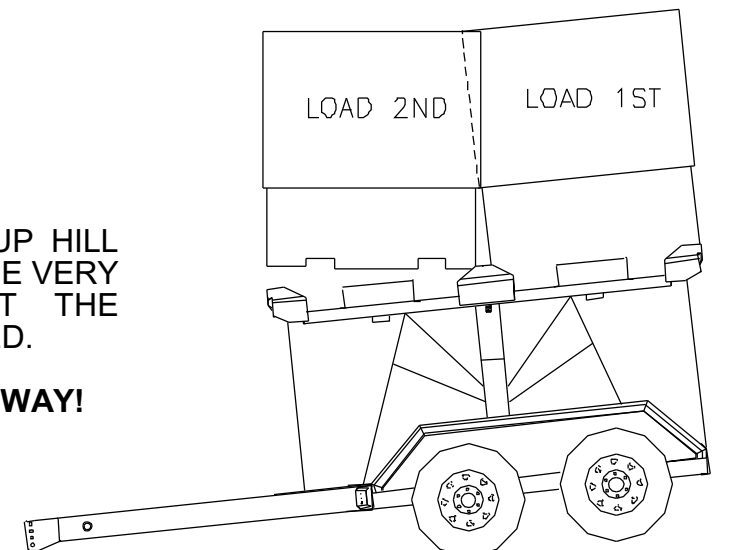
IF IT IS NOT POSSIBLE TO LOAD ON A LEVEL SURFACE, LOAD THE DOWN HILL CONTAINER FIRST, AS SHOWN.

THIS IS THE RIGHT WAY!

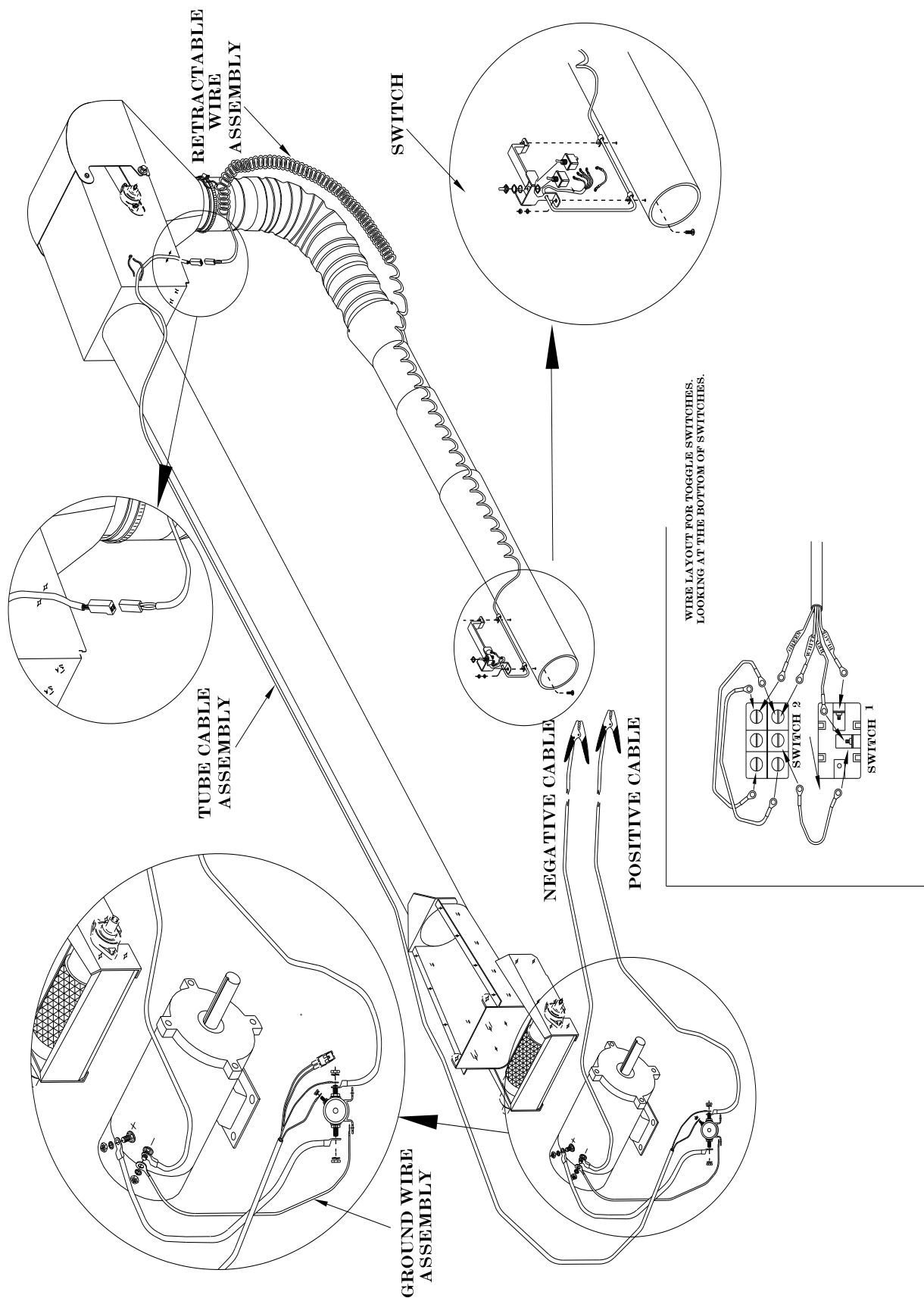


IF YOU LOAD THE UP HILL BOX FIRST, IT WILL BE VERY DIFFICULT TO GET THE SECOND BOX LOADED.

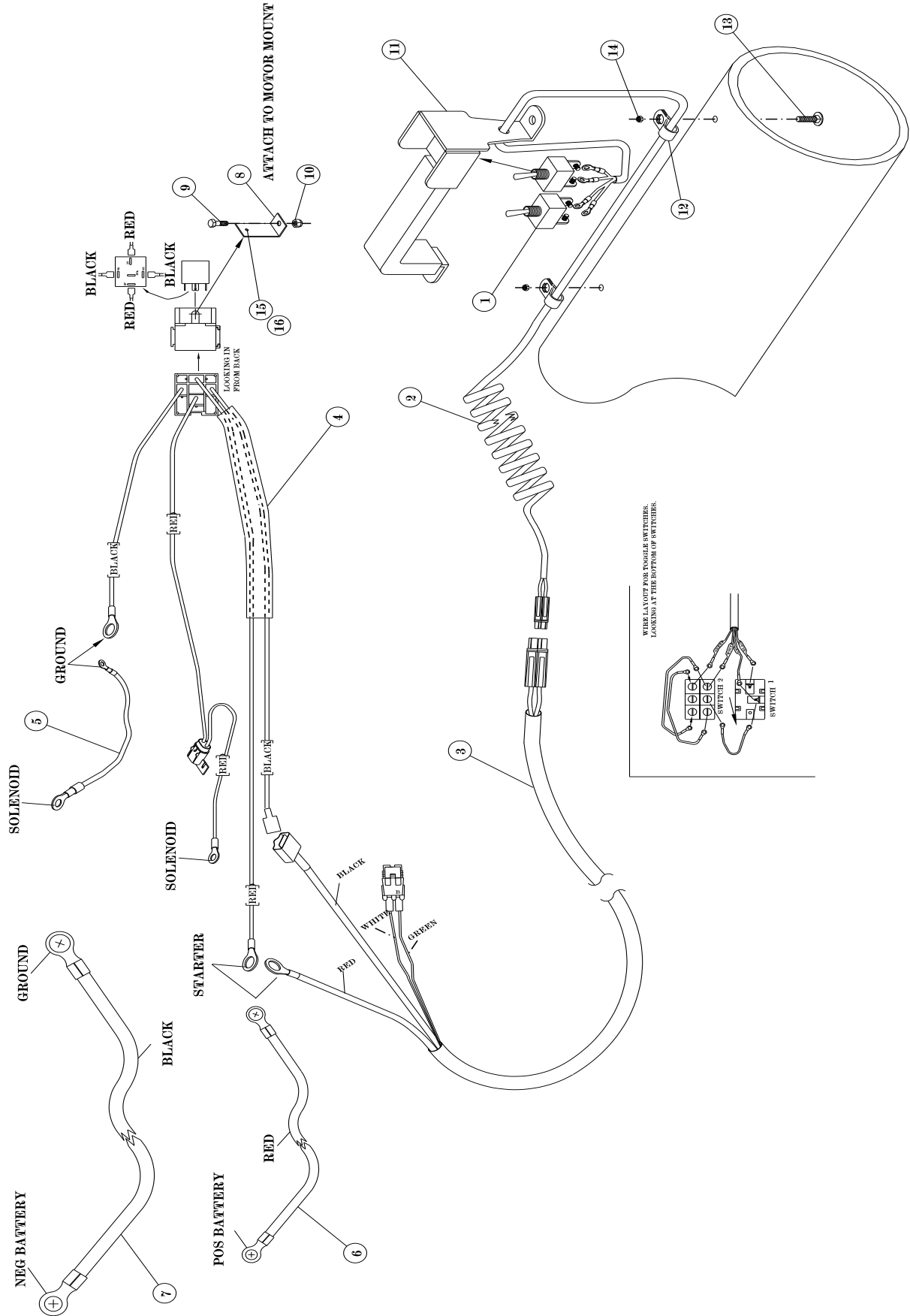
THIS IS THE WRONG WAY!



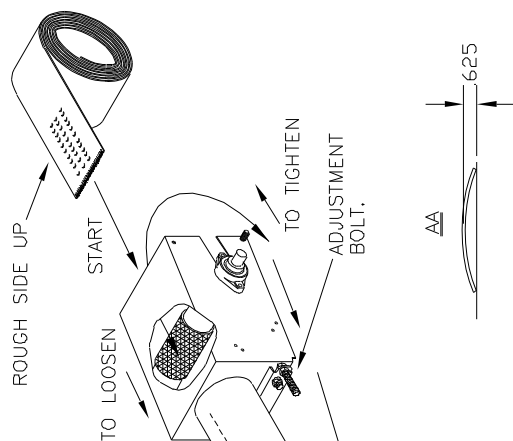
Wiring Diagram For Electric Units



Wiring Diagram For Gas Units (without remote)

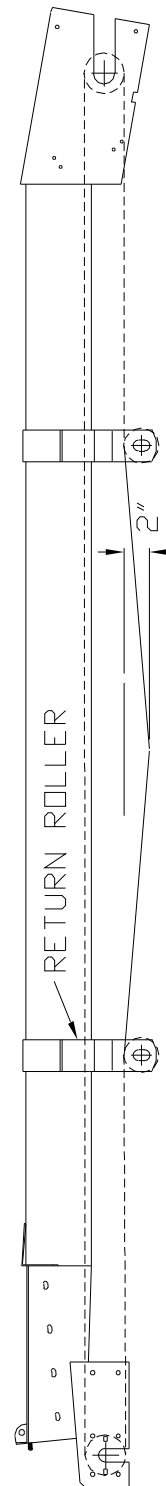


Belt Assembly



BELT TIGHTENING INSTRUCTIONS

Belt should be tightened before you train the belt. Tightening the belt is done on the head roller by tightening the take up bars evenly. Belt is tight when applying 25 lbs. of force, centered between the return rollers, there is no more than 2 inches of deflection.

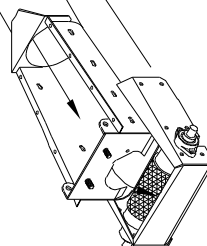


BELT ASSEMBLY INSTRUCTIONS

At the start point, see view of head and tail assembly. Drop belt over the top of head roller and gravity feed belt down the tender tube to the bottom. Guide the belt over the top of the tail roller. Make sure rough side is UP and the smooth side is DOWN against the inside of wall of the tube.

Route both ends around head and tail rollers and over all return idlers mounted under the tube. Slide belt forward or back through tube so the ends of the belt meet at a convenient location between return idlers to facilitate joining.

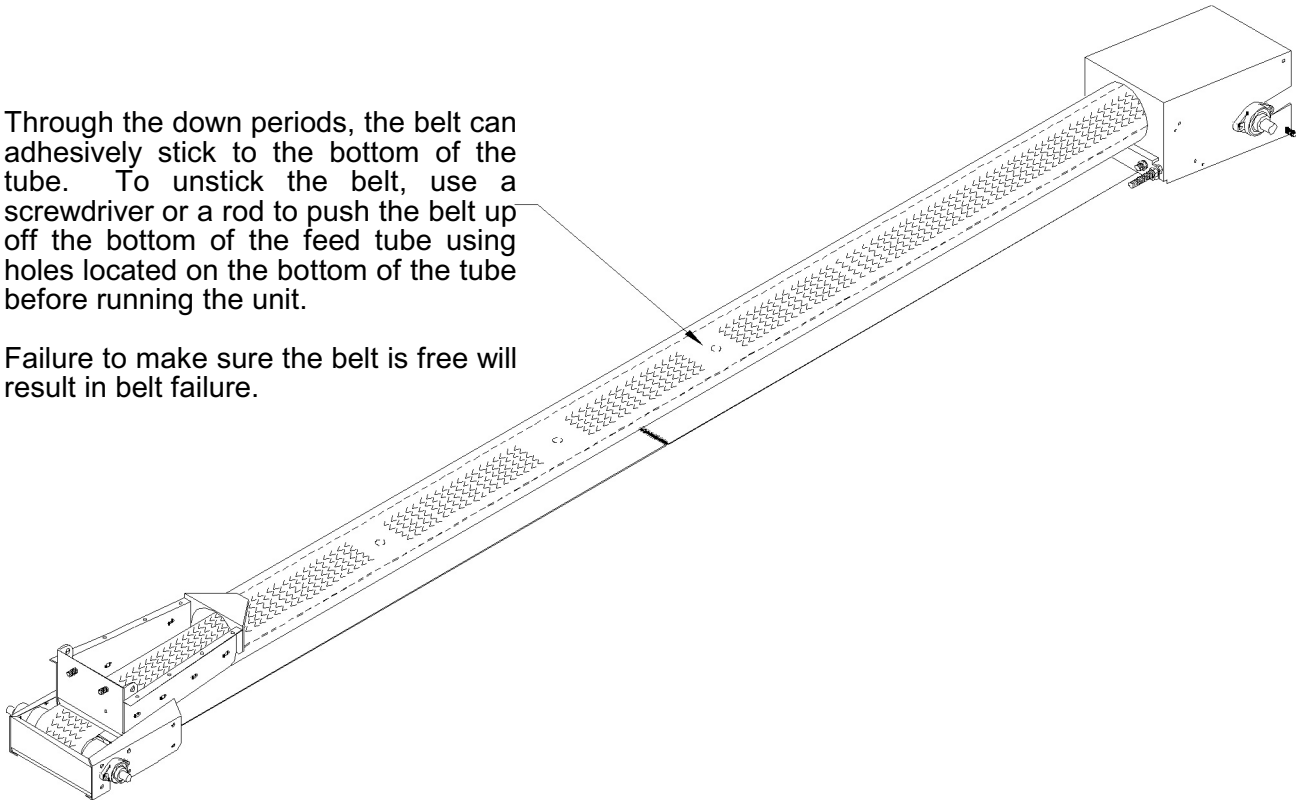
Align and interlace belt and clipper lacings. Slip splice pin (Plastic covered cable) through clipper lacings to secure.



Belt

Through the down periods, the belt can adhesively stick to the bottom of the tube. To unstick the belt, use a screwdriver or a rod to push the belt up off the bottom of the feed tube using holes located on the bottom of the tube before running the unit.

Failure to make sure the belt is free will result in belt failure.



Pre-Operation Check List

1. Check all bearings for proper lubrication.
2. Check the tube for foreign material.
3. Check belt for proper tension.
4. Start unit and check tender belt alignment while unit is empty.

BELT CARE

It is suggested that the unit be run every two to three days or more often if possible. This tends to keep the belt alive and stops any forming of the belt to the curvature of the tube while the unit is not in use.

NOTE: Belt may deteriorate if not in use and exposed to weather conditions for any prolonged period of time.

Operation Sequence

1. Check drive chain for proper tension.
2. Make sure tender belt is properly tensioned.
3. Allow unit to run empty for a few minutes to flex tender belt.
4. Check tender belt for proper alignment.
5. Before shutting power off, be certain head and tail unit is empty.

STORAGE

Temporary Storage

1. Relieve tension on tender belt.
2. Store all belt equipment in a dry place. If equipment cannot be stored out of the weather, cover engine and mechanical parts with waterproof material.

Prolonged Storage

1. Remove all belts and store in a cool, dark, dry place.
2. Wash tender belt thoroughly.
3. Wash tender tube both inside and out.
4. Lubricate all bearings.
5. Store in a dry shelter.

Maintenance

Preventive maintenance is the key to the long life of any mechanical device.

Careful and systematic inspection of the Seed Tender will result in maximum, trouble-free service.

BELT REPLACEMENT

To replace the belt, cut it into and hand rotate the head roller until belt has been removed. Install appropriate belt as outlined in assembly instructions.

HEAD ASSEMBLY TAKE-UP

After extended use, the tender belt may stretch to the point that there is not sufficient take-up in the head assembly to tighten it. Obtain additional take-up by cutting a 6" to 8" section from the belt. A new splice facing may be ordered from your CrustBuster/Speed King distributor or from the factory.

PERIODIC CLEAN-OUT

Due to the characteristics of certain materials, residue sometimes collects between the tender belt and the tube. Check the unit periodically for any material build up in this area. If residue appears excessive, remove the tender belt and thoroughly wash the belt and tube. Allow belt and tube to dry before reinstalling the belt.

When the tender is not being used, secure belt to the tube to prevent belt from flopping in the wind, possibly breaking return idlers or ripping belt.

LUBRICATION

All bearings which are fitted with grease zerks should be lubricated at the conclusion of each operating day. Before greasing the bearings, make certain the zerks are free of dirt, otherwise this will be passed into the bearing race. If the unit will be out of service for a period of time, purge the bearings.

BELT TRAINING PROCEDURE

A tender belt correctly installed and trained will run straight and true. The belt must run centered on all terminal rollers, take-up rollers, and return idlers throughout the entire belt length.

Incorrect installation and training can result in severe edge damage, material spillage, material leakage through the skirt rubber at the loading point, and excessive power demands. Material spillage is the usual reason for belt carcass ruptures and pulley cover gouging and stripping, while leakage at the skirt rubber results in excessive conveyor cover wear under the skirts.

Maintenance - (cont'd)

ALIGNMENT

All rotating parts -head roller, tail roller, and return idlers- must be at a 90 degree angle to the direction of belt travel, must be level, and the midpoint of each centered on a line when properly aligned.

Alignment is checked by running a tight wire from the center of head roller to center of the tail roller.

Level all rotating parts. If a part is not level, the belt will run to the lower side.

BELT SPLICING

A belt must not run out at the splice area. Runout will occur if the belt is not cut square or splice is not installed square.

Operation

1. Prior to the start-up, check to see that belt is free from any objects that would bind or tear.
2. On starting for the first time, with no load on belt, apply power for a few seconds only to see that the tender belt is well centered in the tube and on the return.
3. It should be noted at this time that too much tension on the tender belt will make adjustment or training much more difficult, shorten the life of the belt, and waste power. The belt should be tensioned tight enough so the drive roller does not slip. The belt is tight when applying 25 pounds of force, centered between the return rollers, there is no more than 2 inches of deflection.

BELT TRAINING

It is essential that the tender belt be properly trained at all times. For this reason, all rotating parts should always be at right angles to the tender belt.

Slight adjustment of roller shafts may be required to keep belts centered on them i.e., if the belt runs to one side of the roller - apply more tension to this side of the belt by advancing the roller shaft on this side. This can be done on the head section as long as adjustment bolt does not vary more than 1/4". If it does, and belt will still not center on both rollers, the tail section is probably out of square.

To square tail section roller, even out the head roller until adjustment bolts are equal. On tail section, loosen bearing bolts on opposite side the belt is off. CAUTION: LOOSEN BEARING BOLTS JUST ENOUGH SO IT TAKES A BLOCK OF WOOD AND A SMALL HAMMER TO MOVE THE BEARING. To adjust tail section, 1/32" in most cases, will move the belt. Tail roller bearings only have about a 1/16" to 3/32" movement total. Tighten the bearing, and go to the head section and retrain the belt.

If the belt tends to veer to one side of the return strand, the belt can be centered by "knocking" ahead (in the direction of belt travel) the end of the return idler to which the belt runs. A belt correctly installed will usually train well both empty and loaded, except as noted:

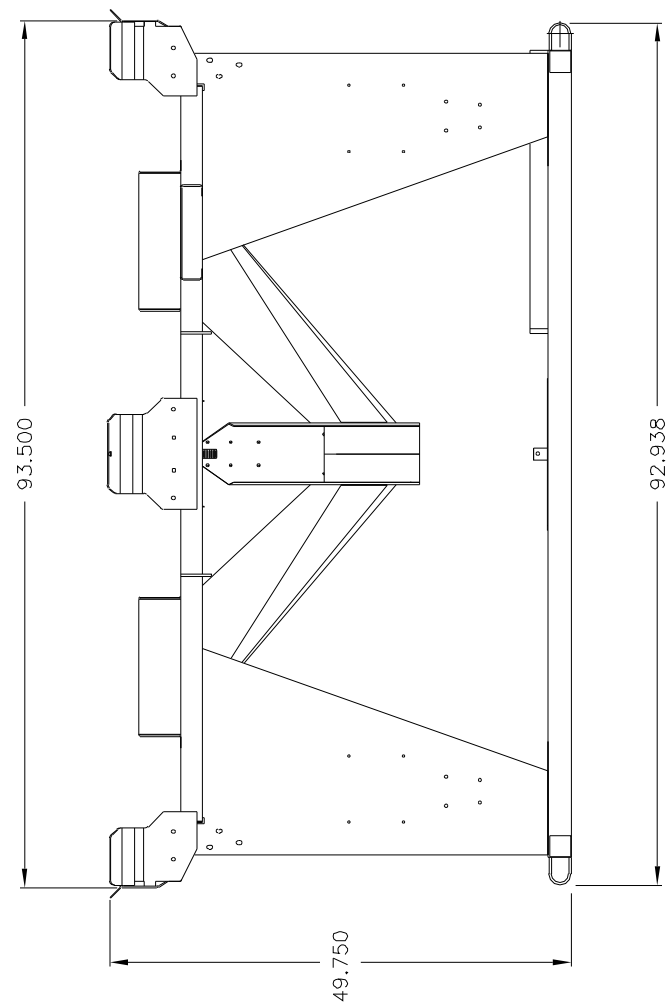
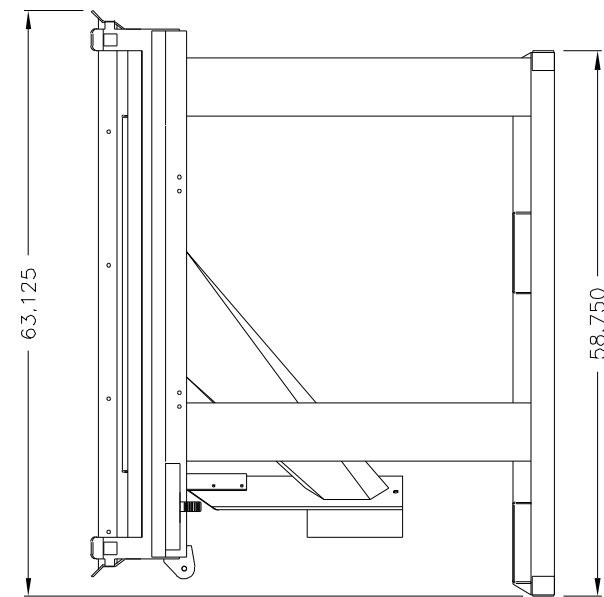
1. One or more rotating parts not in alignment.
2. Belt tensions in some part of system (usually at tail section) are below minimum recommended.
3. Belt not loaded centrally.

When a belt is initially started, it should be jogged around the system to determine if a major runout occurs which could damage belt and belt edges. If runout occurs at some point of the system, the reason is usually a return idler or roller out of alignment before the runout. Alignment should be rechecked before restarting.

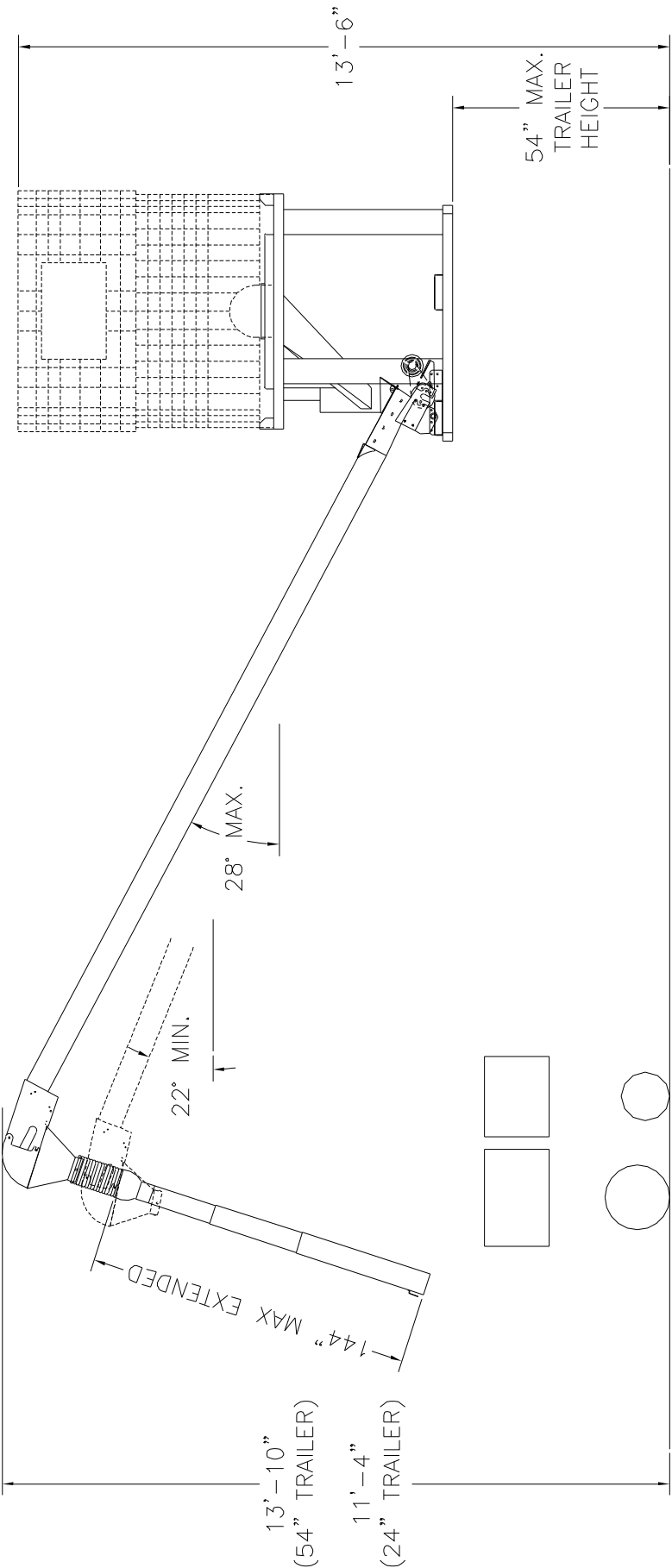
After the belt can be safely run without damage, final training should begin with the head roller. The belt must enter the head roller in the center without movement from side to side. If the belt is not centered on the tail pulley, the return strand of belt should be observed for any section which is not centered on the return idlers. If the belt is not centered at some point, move return idlers starting before this point to correct centering of belt. Movement of idler bracket should be gradual and only 1/16" to 1/8" remembering that the belt will move in the direction that it first contacts the idler. The same corrective action should be taken at the tail roller.

After the belt is trained empty, the belt should be trained with a load. The take-up adjustments are made to prevent belt slip and keep tensions at all points above minimums recommended when belt is operating with a load. If slip occurs under load, additional belt tension should be adjusting the take-up only enough to prevent slip from occurring under load, and when started with a load.

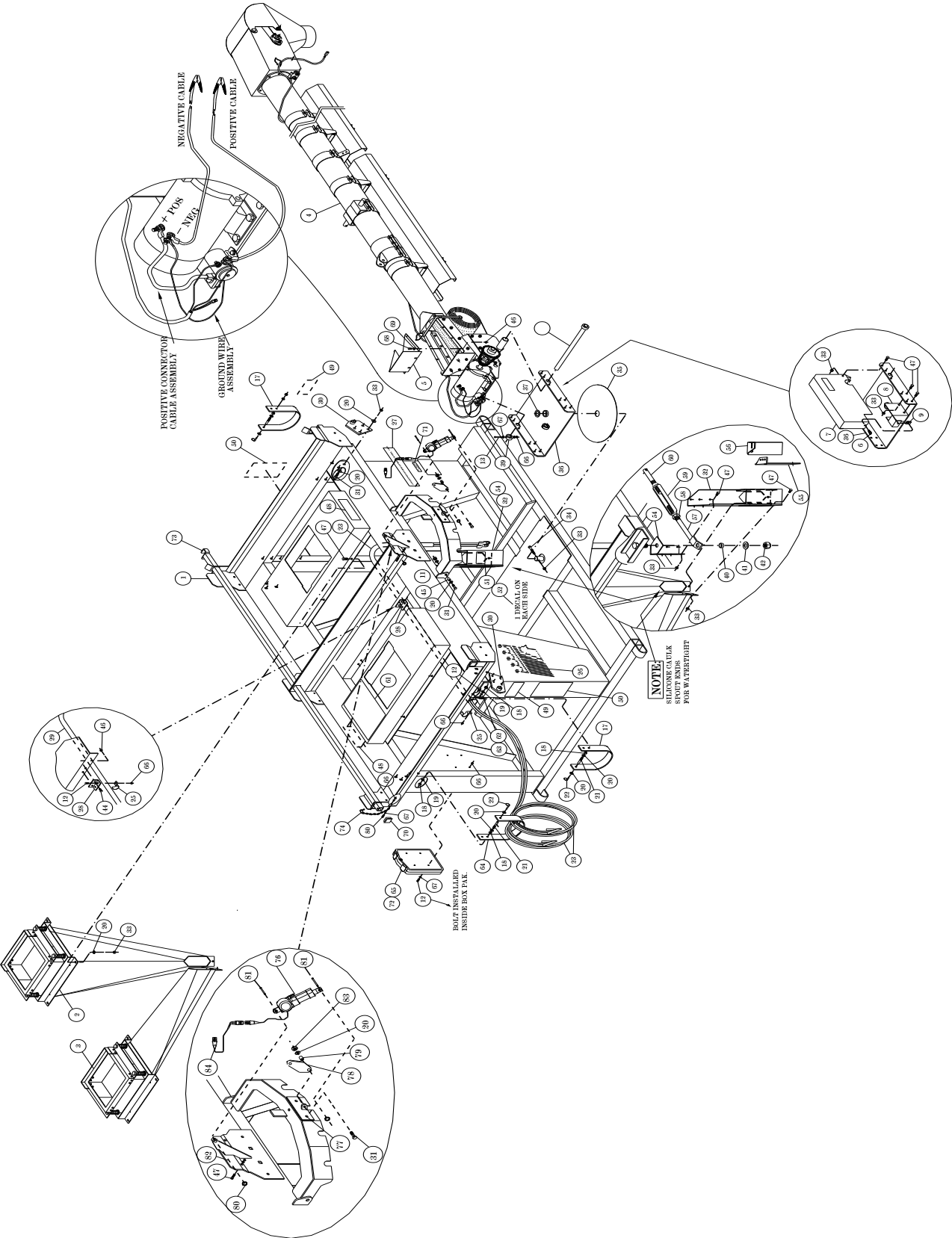
Seed Box Tote
Dimensions



Seed Box Tote
Dimensions



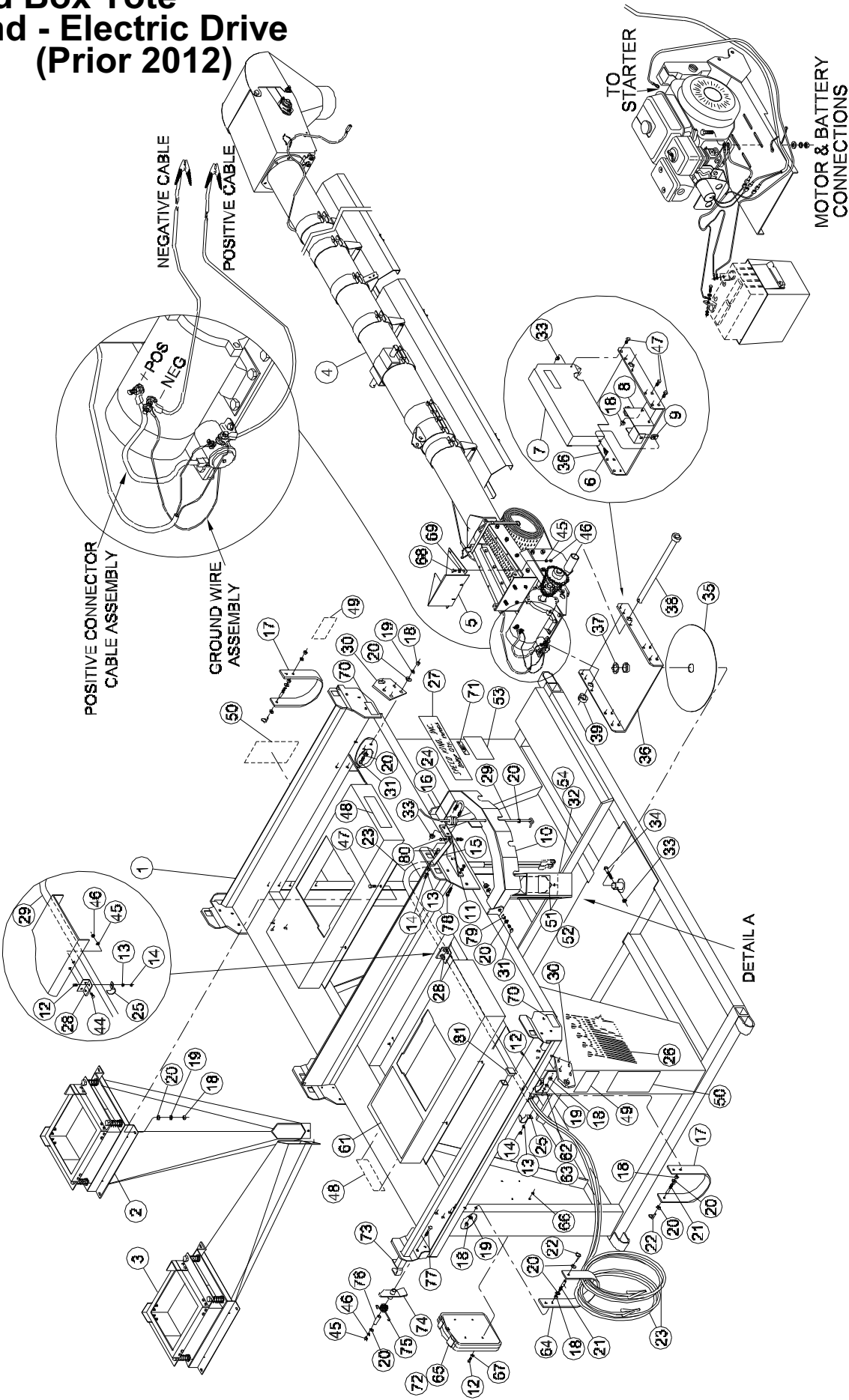
Seed Box Tote Stand - Electric Drive



Seed Box Tote Stand - Electric Drive

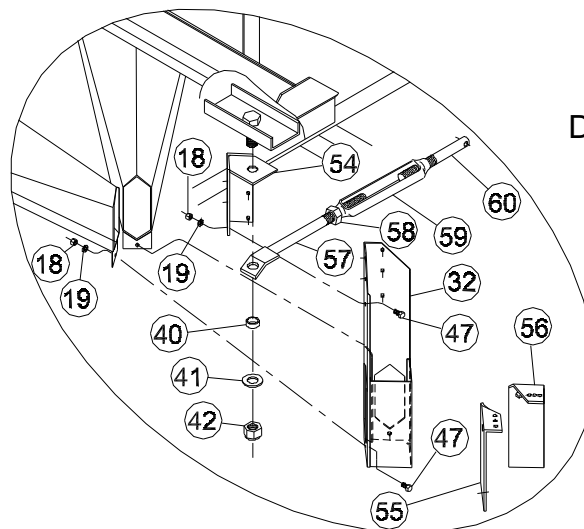
Item	Qty	Part No.	Description	Item	Qty	Part No.	Description
1	1	82932500	Frame	38	1	967638	Swivel Shaft
2	1	62486600	Spout Rear	39	1	153478	Lock Bushing
3	1	62487400	Spout Front	40	1	605220	Bushing 1 1/4" x 1 x 1/2" HS
4	1	62766100	15' Feed Tube Assembly	41	1	330407	Flat Washer 1"
5	1	82099300	Tail Hopper	42	1	330597	Hex Nylock Nut 1"
6	1	01489400	Thumb Screw 5/16" x 3/4"	43	12	331611	Hex Nylock Nut 5/16"
7	1	62382700	Chain Guard	44	2	01144500	HHCS 5/16" x 3/4"
8	1	17306200	Guard Bracket	45	2	19892900	Bushing
9	1	01574300	Clip Nut 5/16" U-Type	46	4	331835	HHCS 1/4" x 1"
10	1	82518200	Index	47	19	01017300	HHCS 3/8" x 1"
11				48	2	05310800	Decal Debris
12	6	01057900	HHCS 1/4" x 3/4"	49	2	05325600	Decal Safety Strap
13	1	02393700	HHCS 1/4" x 2 1/2"	50	2	05326400	Decal Warning Tip-Over
14	2	01047000	Carriage Bolt 5/16" x 1"	51	1	05327200	Decal Warning Clean-out
15				52	1	05328000	Decal Danger Hopper
16				53	1	05303300	Decal Warnings
17	2	17634700	Carrier Strap Long	54	1	82133000	Spout Attachment
18	4	330035	Hex Nut 3/8"	55	1	17385600	Spout Gate
19	2	330043	Lock Washer 3/8"	56	1	17387200	Spout Gate
20	35	330894	Flat Washer 3/8"	57	1	82527300	Turnbuckle Bracket
21	3	16864100	Pin 3/8" x 2 1/2"	58	1	332288	Jam Nut 1"
22	3	330928	Klik Pin 3/16"	59	1	06814800	Turnbuckle 1" x 8 3/4"
23	1	62629100	Battery Cable	60	1	17287400	Turnbuckle Pin 1" x 10"
24				61	1	606327	Decal Loading Tote Box
25	2	03102100	Conduit Strap 1"	62	1	00694000	Serial Plate
26	2	01113000	Decal "Speed King Head"	63	2	600577	Drive Screw
27	2	611301	Decal "Letters	64	1	16865800	Belt 2" x 24"
28	1	17284100	Cable Bracket	65	1	607416	Manual Pak
29				66	14	330522	Nylock Nut 1/4"
30	2	82089400	Transport Lock	67	4	02016400	Flat Washer 1/4"
31	8	01158500	HHCS 3/8" x 1 1/4"	68	4	01010800	HHCS 5/16" x 1"
32	1	82119900	Dual Spout Bracket	69	4	330852	Flat Washer 5/16"
33	36	330837	Hex Nylock Nut 3/8"	70	2	03818200	Square Plug
34	1	331884	HHCS 3/8" x 2 1/2"	71	1	03439700	Decal Patent No.6,505,760
35	1	570630	Wear Plate 16"	72	1	17392200	Owners Manual
36	1	82114000	Pivot Base	73	2	83019000	Box Lock Bar
37	1	332569	Machine Bushing 1 7/8" x 1 1/4" x 10ga	74	2	434456	Chain
				75	125	00843300	Caulking Silicone Clear
				76	1	883421	Actuator Assy
				77	1	90959800	Actuator Mount Box
				78	1	32533200	Plate HR .188x1.81x4.151
				79	2	149393	Bush .500x.375x.313
				80	2	04430500	Split Ring
				81	2	04432100	Clevis Pin
				82	1	90958000	2Box Actuator Base Mount Box
				83	6	01916600	Nut .375 Hex Nylock
				84	1	883413	Actuator Wire Assy

Seed Box Tote Stand - Electric Drive (Prior 2012)



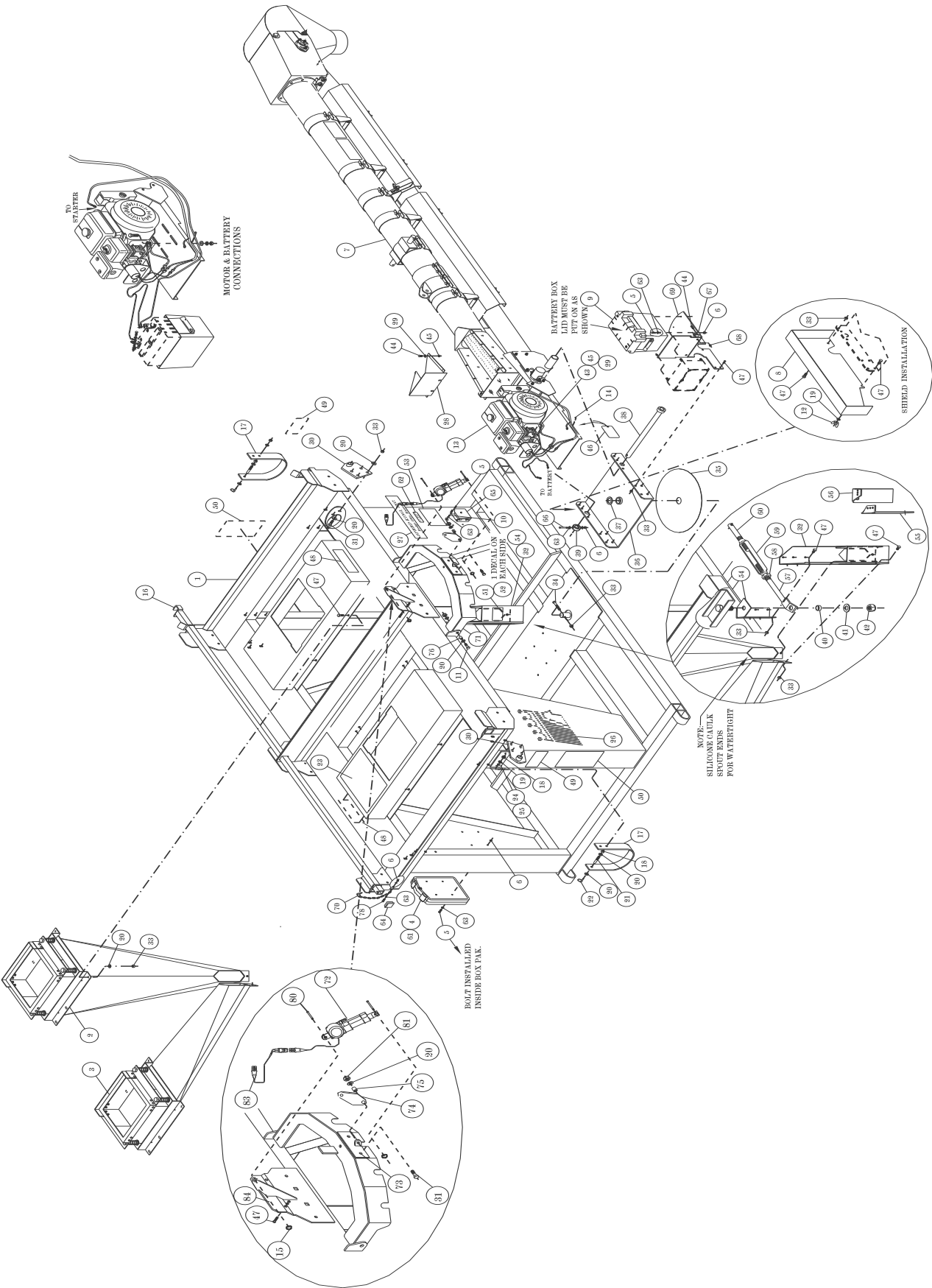
Seed Box Tote Stand - Electric Drive (Prior 2012)

Item	Qty	Part No.	Description	Item	Qty	Part No.	Description
1	1	82528100	Frame	41	1	330407	Flat Washer 1"
2	1	62486600	Spout Rear	42	1	330597	Hex Nylock Nut 1"
3	1	62487400	Spout Front	44	2	01144500	HHCS 5/16" x 3/4"
4	1	62766100	15' Feed Tube Assembly	45	12	330845	Lock Washer 5/16"
5	1	82099300	Tail Hopper	46	12	330811	Hex Nut 5/16"
6	1	01489400	Thumb Screw 5/16" x 3/4"	47	19	01017300	HHCS 3/8" x 1"
7	1	62382700	Chain Guard	48	2	05310800	Decal Debris
8	1	17306200	Guard Bracket	49	2	05325600	Decal Safety Strap
9	1	01574300	Clip Nut 5/16" U-Type	50	2	05326400	Decal Warning Tip-Over
10	1	82518200	Index	51	1	05327200	Decal Warning Clean-out
11	1	20608600	Index Mount Plate	52	1	05328000	Decal Danger Hopper
12	6	01057900	HHCS 1/4" x 3/4"	53	1	05303300	Decal Warnings
13	8	330050	Lock Washer 1/4"	54	1	82133000	Spout Attachment
14	8	332205	Hex Nut 1/4"	55	1	17385600	Spout Gate
15	1	20609400	Index Brace Plate	56	1	17387200	Spout Gate
16	1	03651700	Insulator	57	1	82527300	Turnbuckle Bracket
17	2	17634700	Carrier Strap Long	58	1	332288	Jam Nut 1"
18	34	330035	Hex Nut 3/8"	59	1	06814800	Turnbuckle 1" x 8 3/4"
19	29	330043	Lock Washer 3/8"	60	1	17287400	Turnbuckle Pin 1" x 10"
20	35	330894	Flat Washer 3/8"	61	1	606327	Decal Loading Tote Box
21	3	16864100	Pin 3/8" x 2 1/2"	62	1	00694000	Serial Plate
22	3	330928	Klik Pin 3/16"	63	2	600577	Drive Screw
23	1	62375100	Battery Cable	64	1	16865800	Belt 2" x 24"
24	1	01034800	U-bolt 3/8" x 1 1/4" x 2 1/4"	65	1	607416	Manual Pak
25	2	03102100	Conduit Strap 1"	66	4	330522	Nylock Nut 1/4"
26	2	01113000	Decal "Speed King Head"	67	4	02016400	Flat Washer 1/4"
27	2	01202100	Decal "Name"	68	4	01010800	HHCS 5/16" x 1"
28	1	17284100	Cable Bracket	69	4	330852	Flat Washer 5/16"
29	33'	01467000	Nylon Rope 1/4"	70	2	05315700	Decal Pinch Points
30	2	82089400	Transport Lock	71	1	03439700	Decal Patent No. 6,505,760
31	8	01158500	HHCS 3/8" x 1 1/4"	72	1	17392200	Owners Manual
32	1	82119900	Dual Spout Bracket	73	4	82519000	Box Lock Bar
33	6	330837	Hex Nylock Nut 3/8"	74	4	82425000	Lock Bracket
34	1	331884	HHCS 3/8" x 2 1/2"	75	4	03670700	Spring
35	1	570630	Wear Plate 16"	76	4	20302600	Spring Bushing
36	1	82114000	Pivot Base	77	4	03783800	Carriage Bolt 3/8" X 2 1/2"
37	1	332569	Machine Bushing 1 7/8" x 1 1/4" x 10ga	78	2	01047000	Carriage Bolt 5/16" x 1"
38	1	17302100	Tube Shaft	79	2	19892900	Bushing
39	2	06409700	Set Collar 1" Steel	80	2	331835	HHCS 1/4" x 1"
40	1	605220	Bushing 1 1/4" x 1 x 1 1/2" HS	81	4	03818200	Square Plug



DETAIL A

Seed Box Tote Stand - Gas Drive



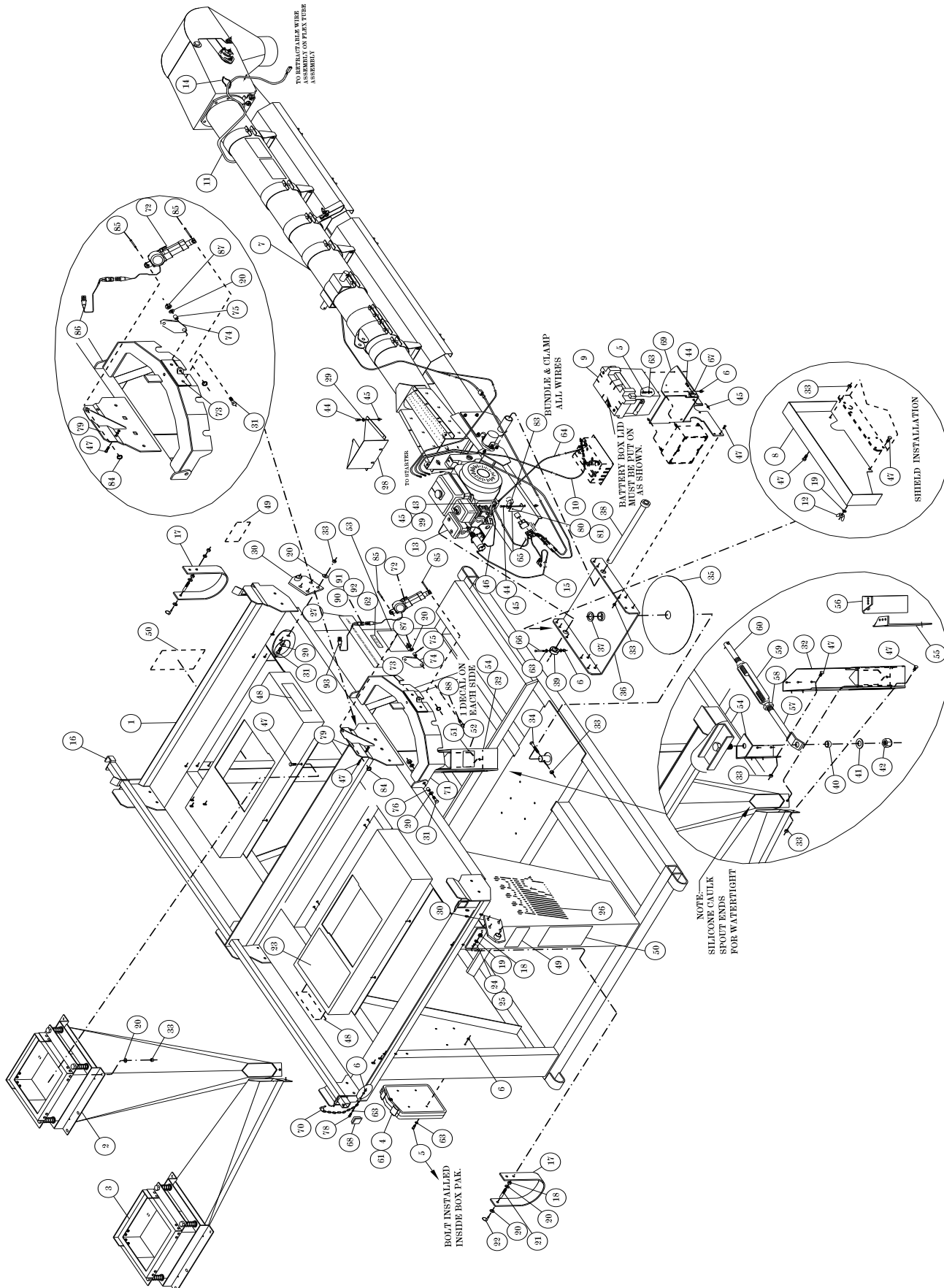
Seed Box Tote Stand - Gas Drive

Item	Qty	Part No.	Description
1	1	82932500	Frame
2	1	62486600	Spout Rear
3	1	62487400	Spout Front
4	1	607416	Manual Pak
5	6	01057900	HHCS 1/4" x 3/4"
6	9	330522	Nylock 1/4"
7	1	63094700	15' Feed Tube Assembly
8	1	62605100	Belt Guard
9	1	01429000	Battery Box Group 24
10	2	605659	Grommet
11	8	01158500	HHCS 3/8" x 1 1/4"
12	1	334847	Wing Nut 3/8"
13	1	63046700	Engine Assembly
14	1	571299	Cable Tie 8 1/2"
15	2	04430500	Split Ring
16	2	83019000	Box Lock Bar
17	2	17634700	Carrier Strap Long
18	4	330035	Hex Nut 3/8"
19	3	330043	Lock Washer 3/8"
20	35	330894	Flat Washer 3/8"
21	2	16864100	Pin 3/8" x 2 1/2"
22	2	330928	Klik Pin 3/16"
23	1	606327	Decal Loading Caution
24	2	600577	Drive Screw
25	1	00694000	Serial Plate
26	2	01113000	Decal "Speed King Head"
27	2	611301	Decal "Letters"
28	1	82099300	Chute
29	8	330852	Flat Washer 5/16"
30	2	82089400	Transport Lock
31	8	01158500	HHCS 3/8" x 1 1/4"
32	1	82119900	Dual Spout Bracket
33	23	330837	Hex Nylock Nut 3/8"
34	1	331884	HHCS 3/8" x 2 1/2"
35	1	570630	Wear Plate 16"
36	1	82114000	Pivot Base
37	1	332569	Machine Bushing 1 7/8" x 1 1/4" x 10ga
38	1	967638	Shaft
39	1	153478	Lock Bushing

Item	Qty	Part No.	Description
40	1	605220	Bushing 1 1/4" x 1" x 1/2" HS
41	1	330407	Flat Washer 1"
42	1	330597	Hex Nylock Nut 1"
43	4	335448	HHCS 5/16" x 1 1/2"
44	6	01144500	HHCS 5/16" x 1/2"
45	16	331611	Hex Nylock Nut 5/16"
46	1	612580	Shipping Tag
47	29	01017300	HHCS 3/8" x 1"
48	2	05310800	Decal Debris
49	2	05325600	Decal Safety Strap
50	2	05326400	Decal Warning Tip-Over
51	1	05327200	Decal Warning Clean-out
52	1	05328000	Decal Danger Hopper
53	1	05303300	Decal Warnings
54	1	82133000	Spout Attachment
55	1	17385600	Spout Gate
56	1	17387200	Spout Gate
57	1	82527300	Turnbuckle Bracket
58	1	332288	Jam Nut 1"
59	1	06814800	Turnbuckle 1" x 8 3/4"
60	1	17287400	Turnbuckle Pin
61	1	17392200	Owners Manual
62	1	03439700	Decal Patent No. 6,505,760
63	9	02016400	Flat Washer 1/4"
64	2	03818200	Square Plug
65	1	03895000	Remote Fob Box
66	1	02393700	HHCS 1/4 x 2 1/4"
67	2	00613000	Hose Clamp 5/8"
68	2	331611	Hex Nylock Nut 5/16"
69	1	240119	Battery Side Mount Plate
70	2	434456	Chain
71	1	82518200	Index
72	1	883241	Actuator Assy
73	1	90959800	Actuator Mount 2Box
74	1	32533200	Plate HR .188x1.81x4.151
75	2	149393	Bushing .500x.375x.313
76	2	19892900	Bushing
77	2	01047000	Carriage Bolt 5/16" x 1"
78	4	331835	HHCS 1/4" x 1"
79	125	00843300	Caulking Silicone Clear
80	2	04432100	Clevis Pin
81	6	01916600	Nut .375 Hex Nylock
82			
83	1	883413	Actuator Wire Assy
84	1	90958000	2Box Actuator Base Mount Assy

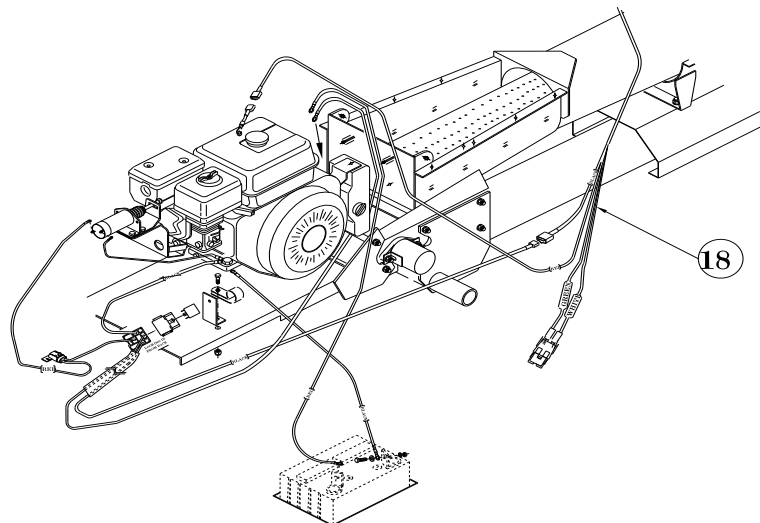
Remote Receiver	#03962800
Remote Transmitter	#03963600

Seed Box Tote Stand - Gas Drive Wired without Remote

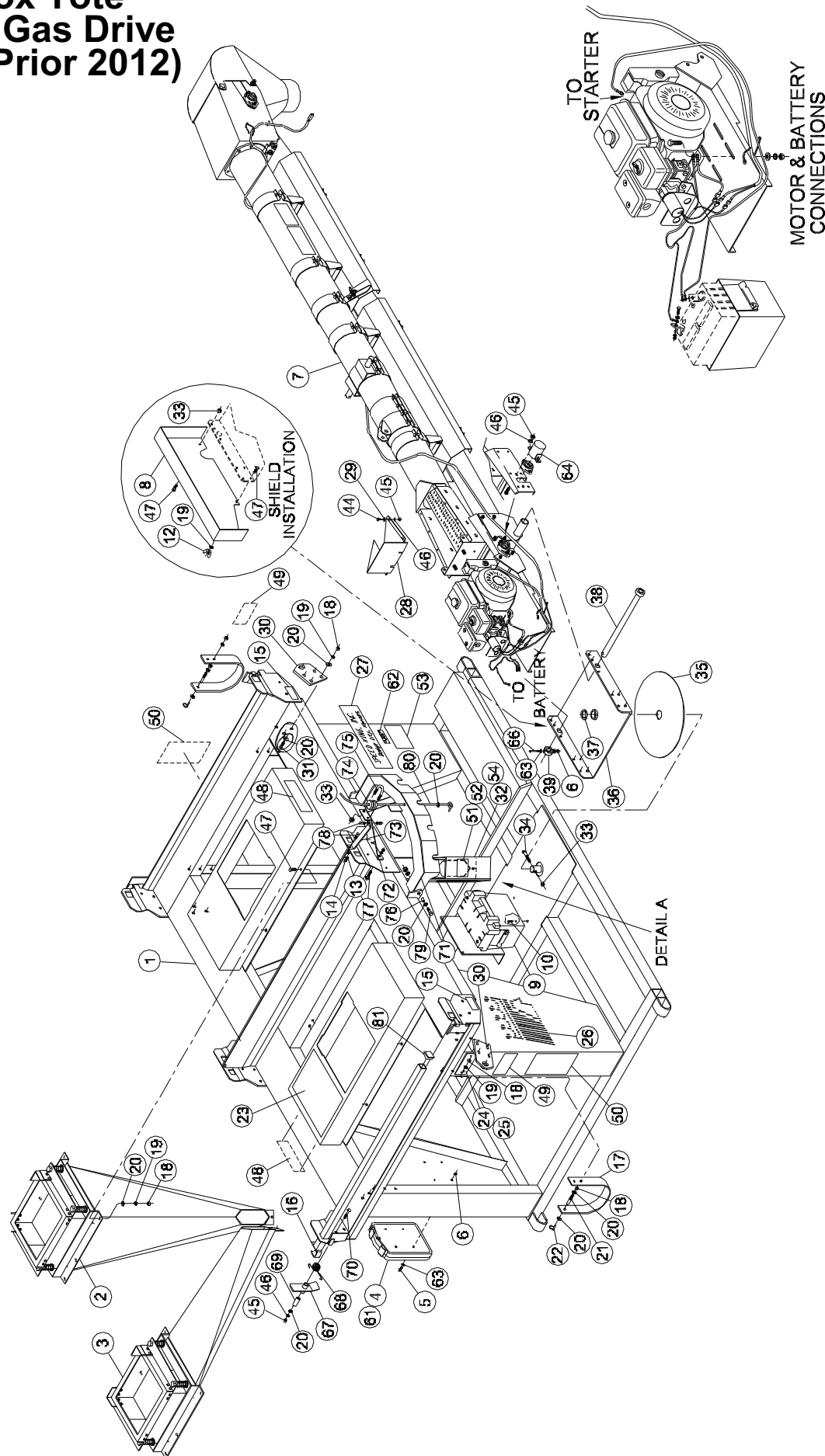


Seed Box Tote Stand - Gas Drive Wired without Remote

Item	Qty	Part No.	Description	Item	Qty	Part No.	Description
1	1	82932500	Frame	42	1	330597	Hex Nylock Nut 1"
2	1	62486600	Spout Rear	43	4	335448	HHCS 5/16" x 1 1/2"
3	1	62487400	Spout Front	44	7	01144500	HHCS 5/16" x 3/4"
4	1	607416	Manual Pak	45	19	331611	Hex Nylock Nut 5/16"
5	4	01057900	HHCS 1/4" x 3/4"	46	1	62774500	Solenoid Ground Cable
6	7	330522	Nylock 1/4"	47	29	01017300	HHCS 3/8" x 1"
7	1	63094700	15' Feed Tube Assembly	48	2	05310800	Decal Debris
8	1	62605100	Belt Guard	49	2	05325600	Decal Safety Strap
9	1	01429000	Battery Box Group 24	50	2	05326400	Decal Warning Tip-Over
10	1	63149900	Battery Cable - Positive	51	1	05327200	Decal Warning Clean-out
11	1	63400600	Tube Cable Wire Assy	52	1	05328000	Decal Danger Hopper
			2Box Actuator	53	1	05303300	Decal Warnings
12	1	334847	Wing Nut 3/8"	54	1	82133000	Spout Attachment
13	1	63046700	Engine Assembly	55	1	17385600	Spout Gate
14	2	571299	Cable Tie 8 1/2"	56	1	17387200	Spout Gate
15	1	611467	Gas Amp Reducer Wire	57	1	82527300	Turnbuckle Bracket
16	2	83019000	Box Lock Bar	58	1	332288	Jam Nut 1"
17	2	17634700	Carrier Strap Long	59	1	06814800	Turnbuckle 1" x 8 3/4"
18	4	330035	Hex Nut 3/8"	60	1	17287400	Turnbuckle Pin
19	3	330043	Lock Washer 3/8"	61	1	17392200	Owners Manual
20	35	330894	Flat Washer 3/8"	62	1	03439700	Decal Patent No. 6,505,760
21	2	16864100	Pin 3/8" x 2 1/2"	63	9	02016400	Flat Washer 1/4"
22	2	330928	Klik Pin 3/16"	64	1	63150700	Battery Cable - Negative
23	1	606327	Decal Loading Caution	65	1	30826200	Mounting Bracket
24	2	600577	Drive Screw	66	1	02393700	HHCS 1/4 x 1 1/4"
25	1	00694000	Serial Plate	67	2	00613000	Hose Clamp 5/8
26	2	01113000	Decal "Speed King Head"	68	2	03818200	Square Plug
27	2	611301	Decal "Name"	69	1	240119	Battery Side Mount Plate
28	1	82099300	Chute	70	2	434456	Chain Assembly
29	8	330852	Flat Washer 5/16"	71	1	82518200	Index
30	2	82089400	Transport Lock	72	1	883421	Actuator Assy
31	9	01158500	HHCS 3/8" x 1 1/4"	73	1	90959800	Actuator Mount 2Box
32	1	82119900	Dual Spout Bracket	74	1	32533200	Plate HR .188x1.81x4.151
33	25	330837	Hex Nylock Nut 3/8"	75	2	149393	Bushing .500x.375x.313
34	1	331884	HHCS 3/8" x 2 1/2"	76	2	19892900	Bushing
35	1	570630	Wear Plate 16"	77	2	01047000	Carriage Bolt 5/16" x 1"
36	1	82114000	Pivot Base	78	4	331835	HHCS 1/4" x 1"
37	1	332569	Machine Bushing 1 7/8" x 1 1/4" x 10ga	79	1	90958000	2Box Actuator Base Mount WA
38	1	967638	Shaft	80	1	02690600	Screw #10-24 x 1 1/4 Pan
39	1	153478	Lock Bushing	81	1	333393	Lock Nut #10-24
40	1	605220	Bushing 1 1/4" x 1" x 1/2" HS	82	125	00843300	Caulking Silicone Clear
41	1	330407	Flat Washer 1"	83	1	00723700	Hose Clamp .875
				84	2	04430500	Split Ring
				85	2	04432100	Clevis Pin
				86	1	883413	Actuator Wire Assy
				87	6	01916600	Nut .375 Hex Nylock

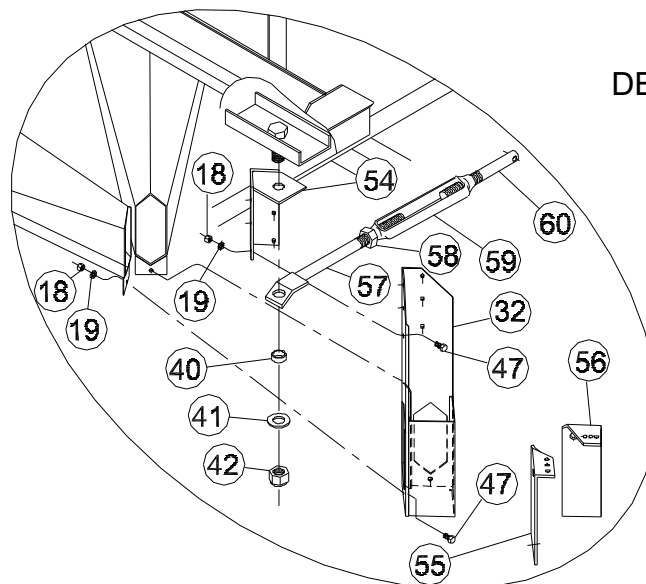


Seed Box Tote Stand - Gas Drive (Prior 2012)



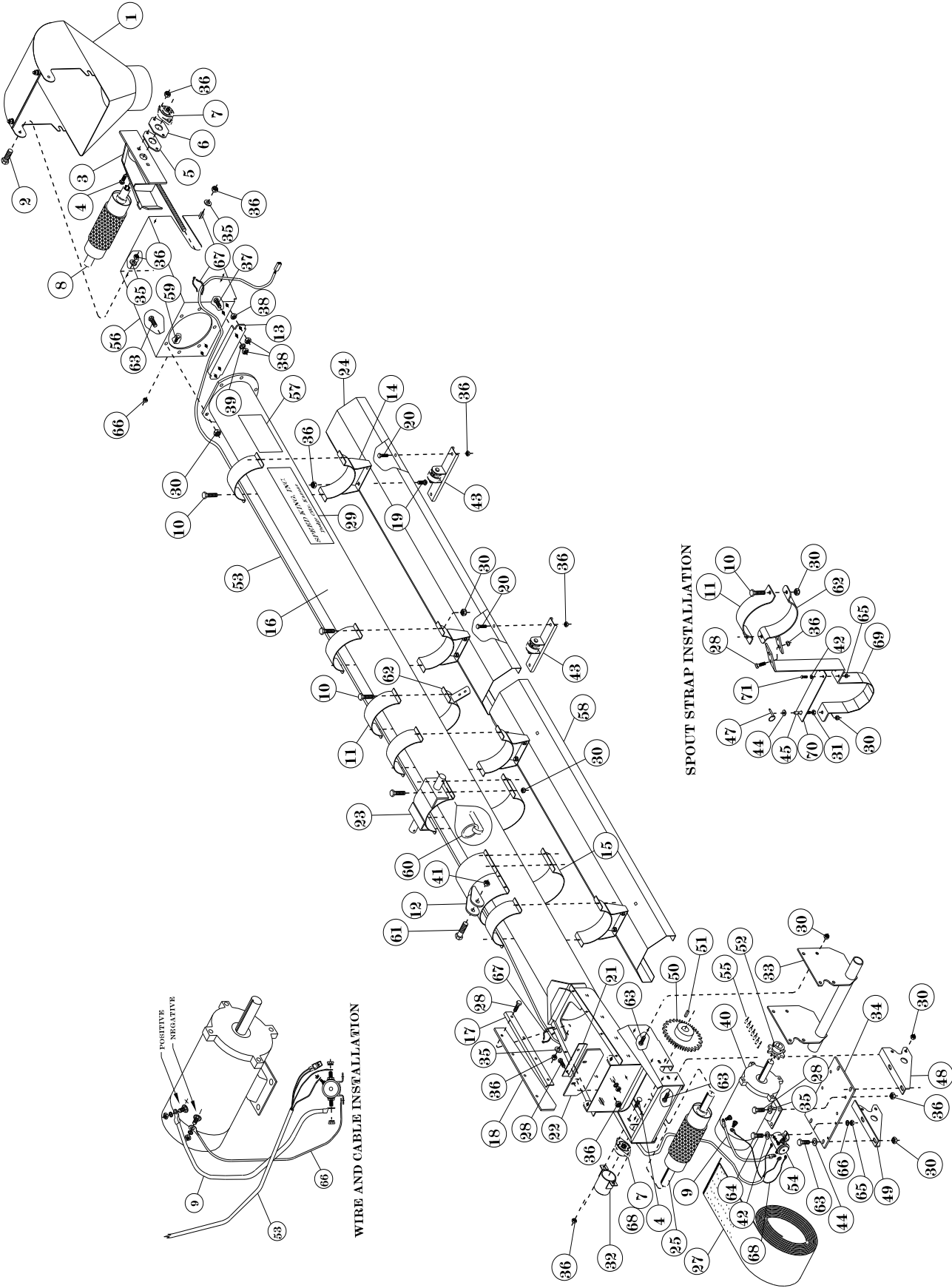
Seed Box Tote Stand - Gas Drive (Prior 2012)

Item	Qty	Part No.	Description	Item	Qty	Part No.	Description
1	1	82528100	Frame	40	1	605220	Bushing 1 1/4" x 1" x 1/2" HS
2	1	62486600	Spout Rear	41	1	330407	Flat Washer 1"
3	1	62487400	Spout Front	42	1	330597	Hex Nylock Nut 1"
4	1	607416	Manual Pak	44	4	01144500	HHCS 5/16" x 3/4"
5	4	01057900	HHCS 1/4" x 3/4"	45	10	330811	Hex Nut 5/16"
6	5	330522	Nylock 1/4"	46	10	330845	Lock Washer 5/16"
7	1	62767900	15' Feed Tube Assembly	47	18	01017300	HHCS 3/8" x 1"
8	1	62605100	Belt Guard	48	2	05310800	Decal Debris
9	1	01429000	Battery Box Group 24	49	2	05325600	Decal Safety Strap
10	6	01200500	Screw 5/16" x 3/4" Self Tap	50	2	05326400	Decal Warning Tip-Over
11	1	234849	Remote Box Mount	51	1	05327200	Decal Warning Clean-out
12	1	334847	Wing Nut 3/8"	52	1	05328000	Decal Danger Hopper
13	2	330050	Lock Washer 1/4"	53	1	05303300	Decal Warnings
14	2	332205	Hex Nut 1/4"	54	1	82133000	Spout Attachment
15	2	05315700	Decal Pinch Point	55	1	17385600	Spout Gate
16	4	82519000	Box Lock Bar	56	1	17387200	Spout Gate
17	2	17634700	Carrier Strap Long	57	1	82527300	Turnbuckle Bracket
18	24	330035	Hex Nut 3/8"	58	1	332288	Jam Nut 1"
19	23	330043	Lock Washer 3/8"	59	1	06814800	Turnbuckle 1" x 8 3/4"
20	33	330894	Flat Washer 3/8"	60	1	17287400	Turnbuckle Pin
21	2	16864100	Pin 3/8" x 2 1/2"	61	1	17392200	Owners Manual
22	2	330928	Klik Pin 3/16"	62	1	03439700	Decal Patent No. 6,505,760
23	1	606327	Decal Loading Caution	63	4	02016400	Flat Washer 1/4"
24	2	600577	Drive Screw	64	1	82502600	Shaft End Guard
25	1	00694000	Serial Plate	66	1	02393700	HHCS 1/4 x 1 1/4"
26	2	01113000	Decal "Speed King Head"	67	4	82425000	Lock Bracket
27	2	01202100	Decal "Name"	68	4	03670700	Spring
28	1	82099300	Chute	69	4	20302600	Spring Bushing
29	4	330852	Flat Washer 5/16"	70	4	03783800	Carriage Bolt 3/8" x 2 1/2"
30	2	82089400	Transport Lock	71	1	82518200	Index
31	6	01158500	HHCS 3/8" x 1 1/4"	72	1	20608600	Index Mount Plate
32	1	82119900	Dual Spout Bracket	73	1	20609400	Index Brace Plate
33	5	330837	Hex Nylock Nut 3/8"	74	1	03651700	Insulator
34	1	331884	HHCS 3/8" x 2 1/2"	75	1	01034800	U-bolt 3/8" x 1 1/4" x 2 1/4"
35	1	570630	Wear Plate 16"	76	2	19892900	Bushing
36	1	82114000	Pivot Base	77	2	01047000	Carriage Bolt 5/16" x 1"
37	1	332569	Machine Bushing 1 7/8" x 1 1/4" x 10ga	78	2	331835	HHCS 1/4" x 1"
38	1	967638	Shaft	79	8	01158500	HHCS 3/8" x 1 1/4"
39	1	153478	Lock Bushing	80	33'	01467000	Nylon Rope 1/4"
				81	4	03818200	Square Plug
						Remote Receiver	#03962800
						Remote Transmitter	#03963600



DETAIL A

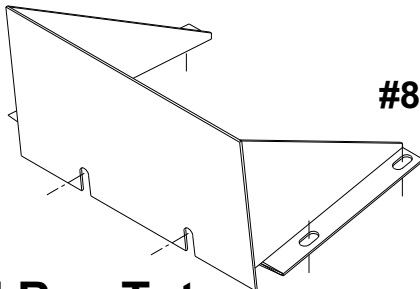
Seed Box Tote 15' Feed Tube Assembly Electric Drive



Seed Box Tote 15' Feed Tube Assembly Electric Drive

Item	Qty	Part No.	Description
1	1	63198600	Spout w/Lining
2	2	01144500	HHCS 5/16" x 3/4"
3	1	961714	Take-up Bar Right
	1	961565	Take-up Bar Left
4	8	01261700	Carriage Bolt 5/16" x 1 1/2"
5	2	151746	Head Bearing Slide Inner
6	2	151753	Head Bearing Slide Outer
7	4	03001500	Bearing 1" Flange
8	1	62212600	Head Roller
9	1	62377700	Positive Connector Cable
10	22	01158500	HHCS 3/8" x 1 1/4"
11	5	16577910	Half Band 6 x 2
12	1	82358300	Turn Buckle Half Band
13	1	16497000	Adjustment Mount Plate
14	4	82489600	Belt Cover Mount
15	3	16578710	Half Band 6 x 4
16	1	82421900	Tail
17	2	16427700	Skirt Board Plate
18	2	16431900	Skirt Board Back
19	8	334409	Carriage Bolt 5/16" x 3/4"
20	2	333542	HHCS 5/16" x 5/8"
21	1	16428500	Skirt Board Plate
22	1	16432700	Skirt Board Back
23	1	82117300	Tube Transport Lock
24	1	20489100	Belt Guard
25	1	62705900	Tail Roller
26			
27	1	62850300	Belt 8" x 35'-7 7/8"
28	11	01010800	HHCS 5/16" x 1"
29	2	01202100	Decal Speed King
30	45	330837	Nylock 3/8"
31	1	330035	Hex Nut 3/8"
32	1	82502600	Shaft End Guard
33	1	82111600	Tube Mount
34	1	17227000	Motor Mount Plate
35	16	330852	Flat Washer 5/16"

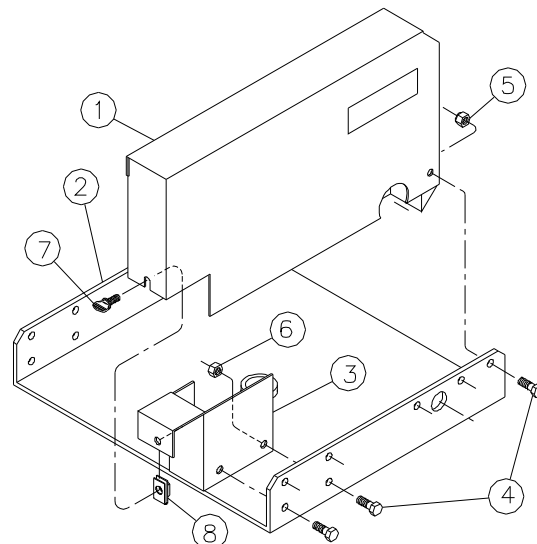
Item	Qty	Part No.	Description
36	33	331611	Hex Nylock 5/16"
37	2	335240	HHCS 1/2" x 1 3/4"
38	6	330134	Hex Nut 1/2"
39	2	330142	Lock Washer 1/2"
40	1	03648300	Electric Motor 12V 1HP
41	1	331363	Hex Nylock 1/2"
42	2	02016400	Flat Washer 1/4"
43	1	62751300	Roller Base
44	6	330894	Flat Washer 3/8"
45	1	16864100	Spout Pin Shaft
46			
47	1	330928	Klik Pin 3/16"
48	1	17230400	Mount Plate Right
49	1	17229600	Mount Plate Left
50	1	84723600	Sprocket #40 36T 1"B
51	1	17375700	Key 1/4" x 1"
52	1	03722600	Sprocket #40 11T 5/8" B
53	1	63401400	Tube Cable Wire Assy 2Box Electric
54	1	03251600	Solenoid Switch
55	1	62371000	Chain #40 x 58 Complete
56	1	82353400	Head Frame
57	1	606335	Decal Belt Training
58	1	20531000	Belt Guard Plate
59	2	01150200	HHCS 1/4" x 1 1/2"
60	1	336974	Klik Pin 5/16" w/ring
61	1	335422	HHCS 1/2" x 2 1/2"
62	1	81865800	Half Band Guard
63	22	01017300	HHCS 3/8" x 1"
64	2	331835	HHCS 1/4" x 1"
65	4	330522	Hex Nylock Nut 1/4"
66	1	62378500	Ground Wire
67	2	571299	Cable Tie 8 1/2"
68	2	01162700	Zerk 1/4-28 x 45 Degree
69	1	244368	Spout Hanger
70	1	614321	Spout Strap
71	2	01057900	HHCS 1/4" x 3/4"



#82099300 - Hopper

Seed Box Tote Guard - Electric

Item	Qty	Part No.	Description
1	1	62382700	Chain Guard Assembly
2	1	82114000	Pivot Base
3	1	17306200	Guard Bracket
4	3	01017300	HHCS 3/8" x 1"
5	1	330837	Hex Nylock Nut 3/8"
6	2	330035	Hex Nut 3/8"
7	1	01489400	Thumb Screw 5/16" x 3/4"
8	1	01574300	Clip Nut 5/16" U-Type



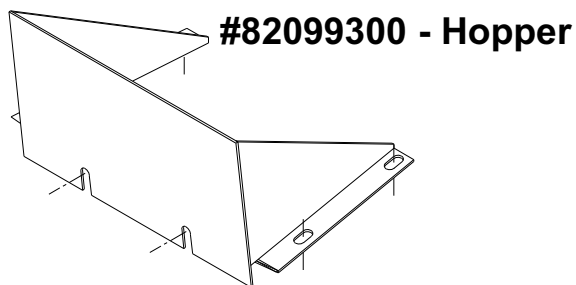
This exploded view diagram illustrates the assembly of a vehicle interior trim component, likely a door sill or footrest. The main assembly is shown in a perspective view, with various parts numbered for identification. The components include a main trim plate (1), a mounting bracket (2), a fastener (3), a spacer (4), a mounting plate (5), a fastener (6), a fastener (7), a fastener (8), a fastener (9), a fastener (10), a fastener (11), a fastener (12), a fastener (13), a fastener (14), a fastener (15), a fastener (16), a fastener (17), a fastener (18), a fastener (19), a fastener (20), a fastener (21), a fastener (22), a fastener (23), a fastener (24), a fastener (25), a fastener (26), a fastener (27), a fastener (28), a fastener (29), a fastener (30), a fastener (31), a fastener (32), a fastener (33), a fastener (34), a fastener (35), a fastener (36), a fastener (37), a fastener (38), a fastener (39), a fastener (40), a fastener (41), a fastener (42), a fastener (43), a fastener (44), a fastener (45), a fastener (46), a fastener (47), a fastener (48), a fastener (49), a fastener (50), a fastener (51), a fastener (52), a fastener (53), a fastener (54), a fastener (55), a fastener (56), a fastener (57), a fastener (58), a fastener (59), a fastener (60), a fastener (61), a fastener (62), a fastener (63), a fastener (64), a fastener (65), a fastener (66), a fastener (67), a fastener (68), a fastener (69).

SPOUT STRAP INSTALLATION

KEY OUT THIS SIDE

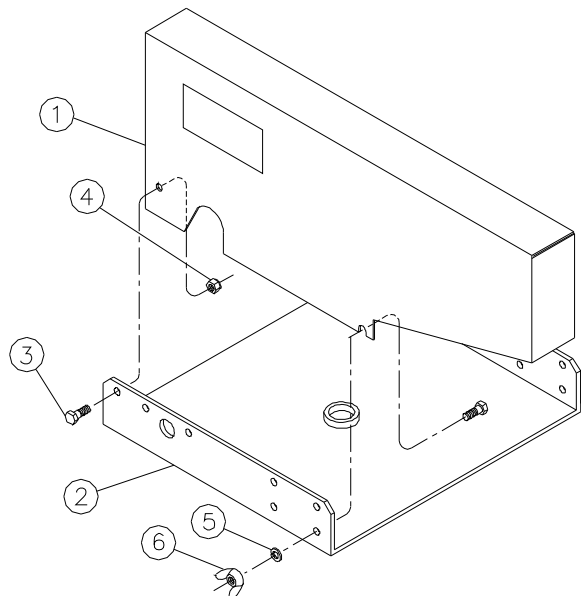
Seed Box Tote 15' Feed Tube Assembly Gas Drive

Item	Qty	Part No.	Description	Item	Qty	Part No.	Description
1	1	63198600	Spout w/Lining	36	33	331611	Hex Nylock 5/16"
2	2	01144500	HHCS 5/16" x 3/4"	37	2	335240	HHCS 1/2" x 1 3/4"
3	1	961714	Take-up Bar Right	38	6	330134	Hex Nut 1/2"
	1	961565	Take-up Bar Left	39	2	330142	Lock Washer 1/2"
4	8	01261700	Carriage Bolt 5/16" x 1 1/2"	40	1	82353400	Head Frame
5	2	151746	Head Bearing Slide Inner	41	1	331363	Hex Nylock 1/2"
6	2	151753	Head Bearing Slide Outer	42	2	333542	HHCS 5/16" x 5/8"
7	4	03001500	Bearing 1" Flange	43	1	62751300	Roller Base
8	1	62212600	Head Roller	44	2	330894	Flat Washer 3/8"
9	8	334409	Carriage Bolt 5/16" x 3/4"	45	1	16864100	Spout Pin Shaft
10	22	01158500	HHCS 3/8" x 1 1/4"	46	1	614321	Spout Strap
11	5	16577910	Half Band 6 x 2	47	1	330928	Klik Pin 3/16"
12	1	82358300	Turn Buckle Half Band	48	1	82143900	Motor Mount-Electric Start
13	1	16497000	Adjustment Mount Plate	49	1	04255600	Sheave 8 x 1 1B
14	4	82489600	Belt Cover Mount	50	1	17375700	Key 1/4" x 1"
15	3	16578710	Half Band 6 x 4	51	1	336974	Klik Pin 5/16" w/ring
16	1	82421900	Tail	52	1	335422	HHCS 1/2" x 2 1/2"
17	2	16427700	Skirt Board Plate	53			
18	2	16431900	Skirt Board Back	54	18	01017300	HHCS 3/8" x 1"
19				55	1	81865800	Half Band Guard
20	2	01150200	HHCS 1/4" x 1/2"	56	2	330522	Nylock 1/4"
21	1	16428500	Skirt Board Plate	57			
22	1	16432700	Skirt Board Back	58	1	82502600	Shaft End Guard
23	1	82117300	Tube Transport Lock	59	40	330837	Hex Nylock Nut 3/8"
24	1	20489100	Belt Guard	60	1	20531000	Belt Guard Plate
25	1	62705900	Tail Roller	61			
26	2	01202100	Decal Speed King	62			
27	1	62850300	Belt 8" x 35'-7 7/8"	63			
28	11	01010800	HHCS 5/16" x 1"	64			
29	2	01162700	Zerk 1/4-20 x 45D	65	1	03752300	V-Belt B-44
30	1	244368	Spout Hanger	66			
31	2	330035	Hex Nut 3/8"	67	2	02016400	Flat Washer 1/4"
32	1	330043	Lock Washer 3/8"	68	2	01057900	HHCS 1/4" x 3/4"
33	1	82111600	Tube Mount	69	4	01139500	Set Screw 3/8 x 16
34	1	606335	Decal Belt Training				
35	13	330852	Flat Washer 5/16"				

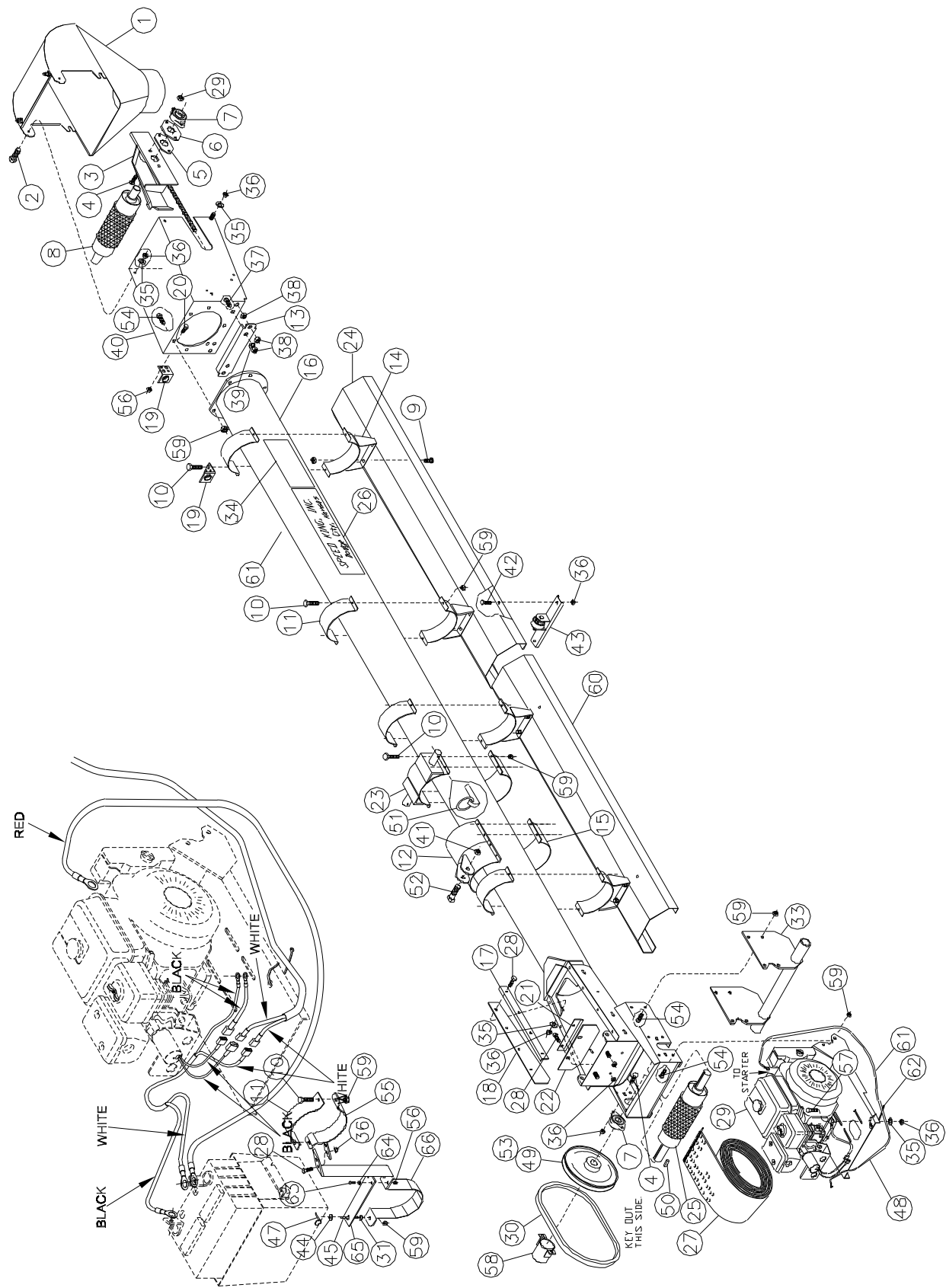


Seed Box Tote Guard - Gas

Item	Qty	Part No.	Description
1	1	62605100	Guard
2	1	82114000	Pivot Base
3	2	01017300	HHCS 3/8" x 1"
4	1	330837	Hex Nylock Nut 3/8"
5	1	330043	Lock Washer 3/8"
6	1	334847	Wing Nut 3/8"

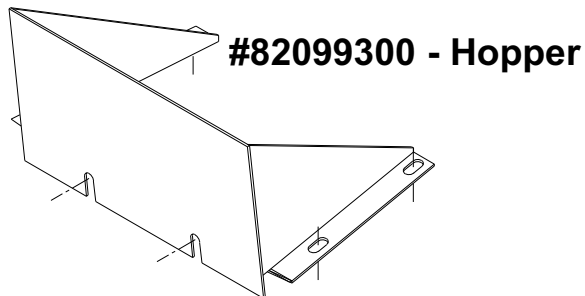


Seed Box Tote
15' Feed Tube Assembly
Gas Drive -(Prior 2012)



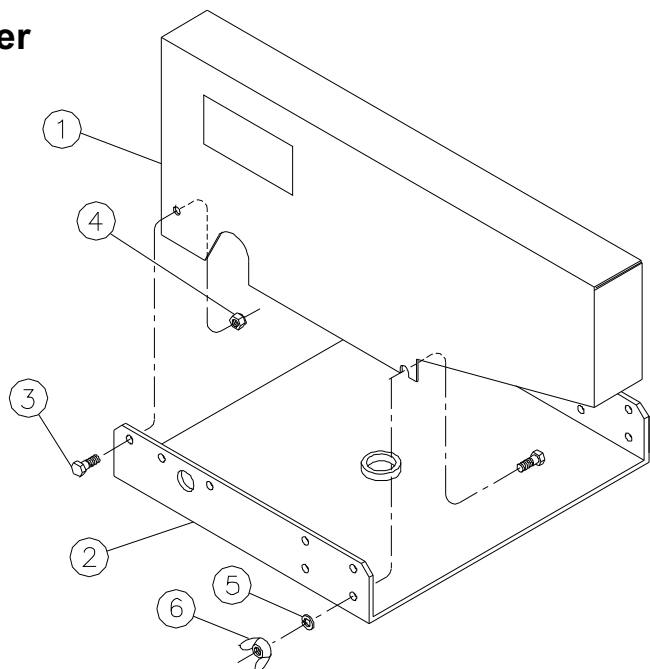
Seed Box Tote 15' Feed Tube Assembly Gas Drive -(Prior 2012)

Item	Qty	Part No.	Description	Item	Qty	Part No.	Description
1	1	63198600	Spout w/Lining	33	1	82111600	Tube Mount
2	2	01144500	HHCS 5/16" x 3/4"	34	1	606335	Decal Belt Training
3	1	961714	Take-up Bar Right	35	17	330852	Flat Washer 5/16"
	1	961565	Take-up Bar Left	36	37	331611	Hex Nylock 5/16"
4	8	01261700	Carriage Bolt 5/16" x 1½"	37	2	335240	HHCS ½" x 1 3/4"
5	2	151746	Head Bearing Slide Inner	38	6	330134	Hex Nut ½"
6	2	151753	Head Bearing Slide Outer	39	2	330142	Lock Washer ½"
7	4	03001500	Bearing 1" Flange	40	1	82353400	Head Frame
8	1	62212600	Head Roller	41	1	331363	Hex Nylock ½"
9	8	334409	Carriage Bolt 5/16" x 3/4"	42	2	333542	HHCS 5/16" x 5/8"
10	22	01158500	HHCS 3/8" x 1 1/4"	43	1	62751300	Roller Base
11	5	16577910	Half Band 6 x 2	44	2	330894	Flat Washer 3/8"
12	1	82358300	Turn Buckle Half Band	45	1	16864100	Spout Pin Shaft
13	1	16497000	Adjustment Mount Plate	46			
14	4	82489600	Belt Cover Mount	47	1	330928	Klik Pin 3/16"
15	3	16578710	Half Band 6 x 4	48	1	82143900	Motor Mount-Electric Start
16	1	82421900	Tail	49	1	04255600	Sheave 8 x 1 1B
17	2	16427700	Skirt Board Plate	50	1	17375700	Key 1/4" x 1"
18	2	16431900	Skirt Board Back	51	1	336974	Klik Pin 5/16" w/ring
19	3	62213400	Head Rope Guide	52	1	335422	HHCS ½" x 2½"
20	2	01150200	HHCS 1/4" x ½"	53	4	01139500	Set Screw 3/8-16 x 3/8
21	1	16428500	Skirt Board Plate	54	18	01017300	HHCS 3/8" x 1"
22	1	16432700	Skirt Board Back	55	1	81865800	Half Band Guard
23	1	82117300	Tube Transport Lock	56	2	330522	Hex Nylock Nut 1/4"
24	1	20489100	Belt Guard	57	4	335448	HHCS 5/16" x 1½"
25	1	62705900	Tail Roller	58	1	80161300	Shaft End Guard
26	2	01202100	Decal Speed King	59	28	330837	Hex Nylock Nut 3/8"
27	1	62850300	Belt 8" x 35'-7 7/8"	60	1	20531000	Belt Guard Plate
28	11	01010800	HHCS 5/16" x 1"	61	1	62782800	Battery Cable 23"
29	1	62936000	Engine Assembly	62	1	571299	Cable Tie 8½"
30	1	03752300	V-Belt B-44	63	2	01057900	HHCS 1/4" x 3/4"
31	2	330035	Hex Nut 3/8"	64	2	02016400	Flat Washer 1/4"
32	1	330043	Lock Washer 3/8"	65	1	614321	Spout Strap
				66	1	244368	Spout Hanger

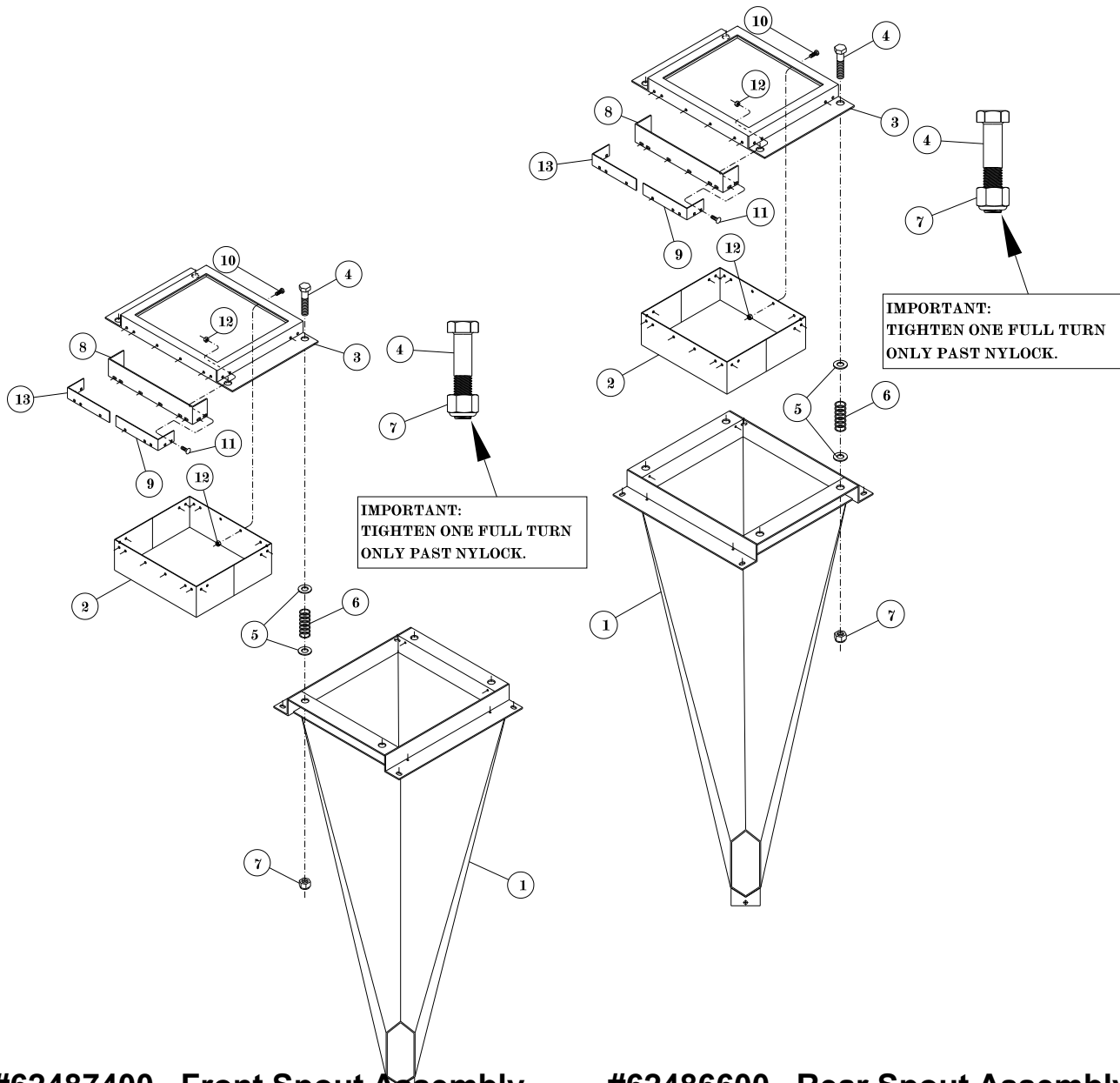


Seed Box Tote Guard - Gas

Item	Qty	Part No.	Description
1	1	62605100	Guard
2	1	82114000	Pivot Base
3	2	01017300	HHCS 3/8" x 1"
4	1	330837	Hex Nylock Nut 3/8"
5	1	330043	Lock Washer 3/8"
6	1	334847	Wing Nut 3/8"



Seed Box Tote Spouts



#62487400 Front Spout Assembly

Item	Qty	Part No.	Description
1	1	82110800	Spout Front
2	1	82105800	Spout Frame Inside
3	1	82107400	Spout Frame Top
4	4	335620	HHCS 5/8" x 3"
5	8	330183	Flat Washer 5/8"
6	4	501031	Spring 7/64" x 2 3/4"
7	4	01572700	Hex Nylock Nut 5/8"
8	1	32253700	Deflector Skirtboard
	2	17252800	Prior August 2017
9	1	32234500	Deflector Back-up
	1	17251000	Prior August 2017
10	8	01057900	HHCS 1/4" x 3/4"
11	10	337949	Carriage Bolt 1/4" x 3/4"
12	18	332205	Hex Nut 1/4"
13	1	32222200	Deflector Back-up
	1	17251000	Prior August 2017

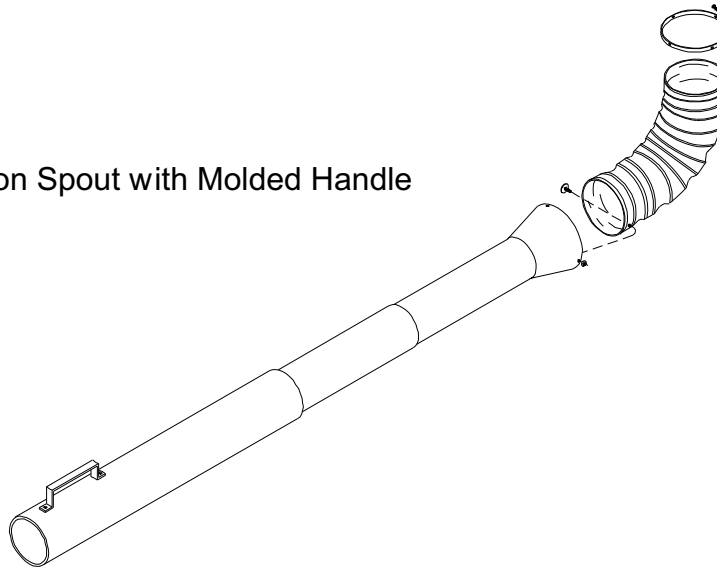
#62486600 Rear Spout Assembly

Item	Qty	Part No.	Description
1	1	82109000	Spout Rear
2	1	82105800	Spout Frame Inside
3	1	82107400	Spout Frame Top
4	4	335620	HHCS 5/8" x 3"
5	8	330183	Flat Washer 5/8"
6	4	501031	Spring 7/64" x 2 3/4"
7	4	01572700	Hex Nylock Nut 5/8"
8	1	32253700	Deflector Skirtboard
	2	17252800	Prior August 2017
9	1	32234500	Deflector Back-up
	1	17251000	Prior August 2017
10	8	01057900	HHCS 1/4" x 3/4"
11	10	337949	Carriage Bolt 1/4" x 3/4"
12	18	332205	Hex Nut 1/4"
13	2	32222200	Deflector Back-up
	1	17251000	Prior August 2017

Seed Box Tote Flexible Tube

Units with Remote

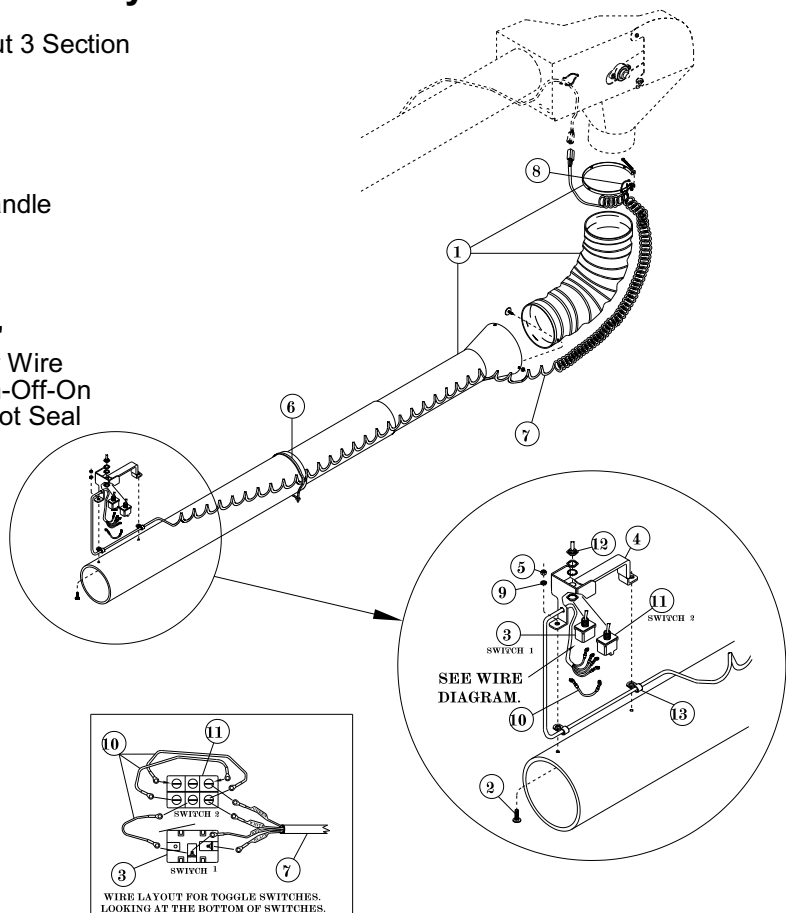
#03968500 - 3 Section Spout with Molded Handle



Units without remote

#62715800-Flexible Spout Assembly- 2 Box

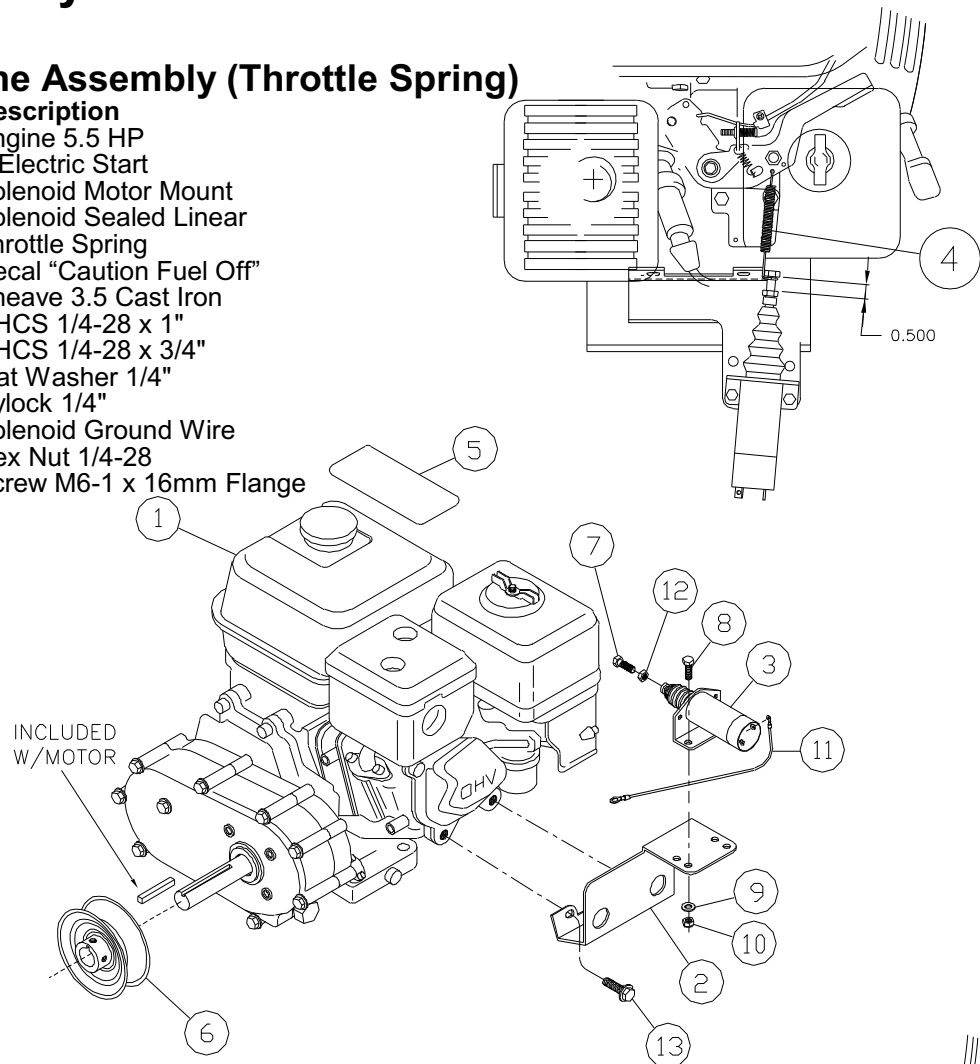
Item	Qty	Part No.	Description
1	1	01526300	Telescoping Spout 3 Section
		17669300	Flex Hose - 20"
		606590	Flex Hose - 36"
		03423100	Hose Clamp
2	2	01065200	Bolt 1/4"-20 x 1"
3	1	03723400	Toggle Switch
4	1	62749700	Flexible Spout Handle
5	2	332205	Hex Nut 1/4"
6	1	571281	Cable Tie 24"
7	1	62716600	Retractable Wire
8	1	571299	Cable Tie 8 1/2"
9	2	330050	Lock Washer 1/4"
10	3	62717400	Switch Connector Wire
11	1	03713500	Toggle Switch On-Off-On
12	1	03682200	Toggle Switch Boot Seal
13	1	01059500	Clamp 5/16"



Seed Box Tote Engine Assembly

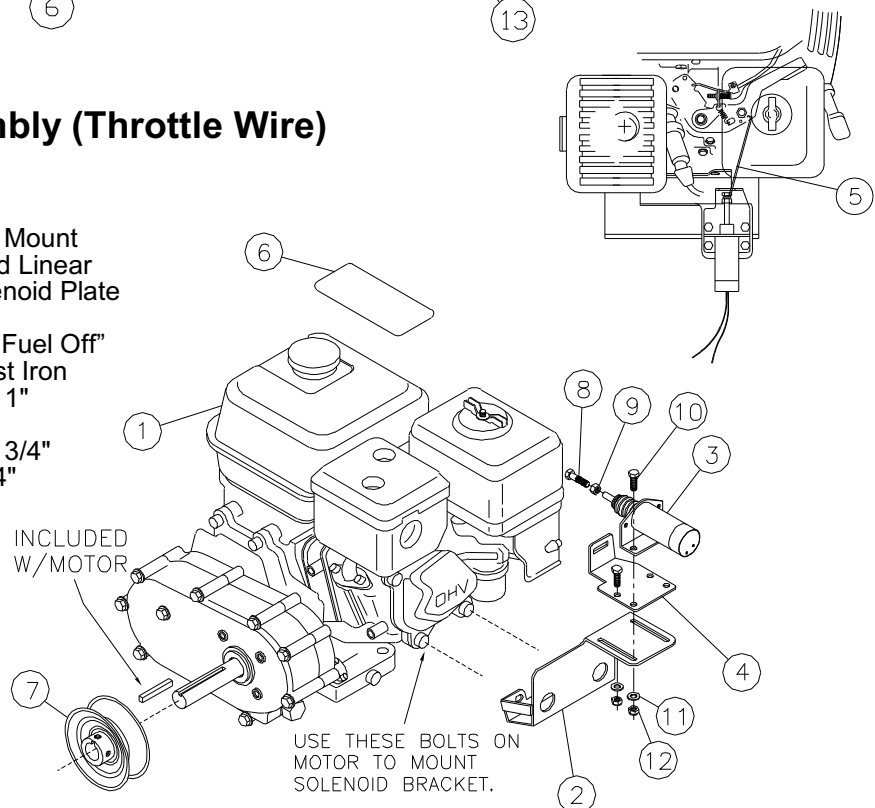
#63046700 - Engine Assembly (Throttle Spring)

Item	Qty	Part No.	Description
1	1	03750400	Engine 5.5 HP Electric Start
2	1	82820200	Solenoid Motor Mount
3	1	03961000	Solenoid Sealed Linear
4	1	04123600	Throttle Spring
5	2	05316500	Decal "Caution Fuel Off"
6	1	16612400	Sheave 3.5 Cast Iron
7	1	03959400	HHCS 1/4-28 x 1"
8	2	01057900	HHCS 1/4-28 x 3/4"
9	2	02016400	Flat Washer 1/4"
10	2	330522	Nylock 1/4"
11	1	62774500	Solenoid Ground Wire
12	1	03960200	Hex Nut 1/4-28
13	2	339242	Screw M6-1 x 16mm Flange



#62936000 - Engine Assembly (Throttle Wire)

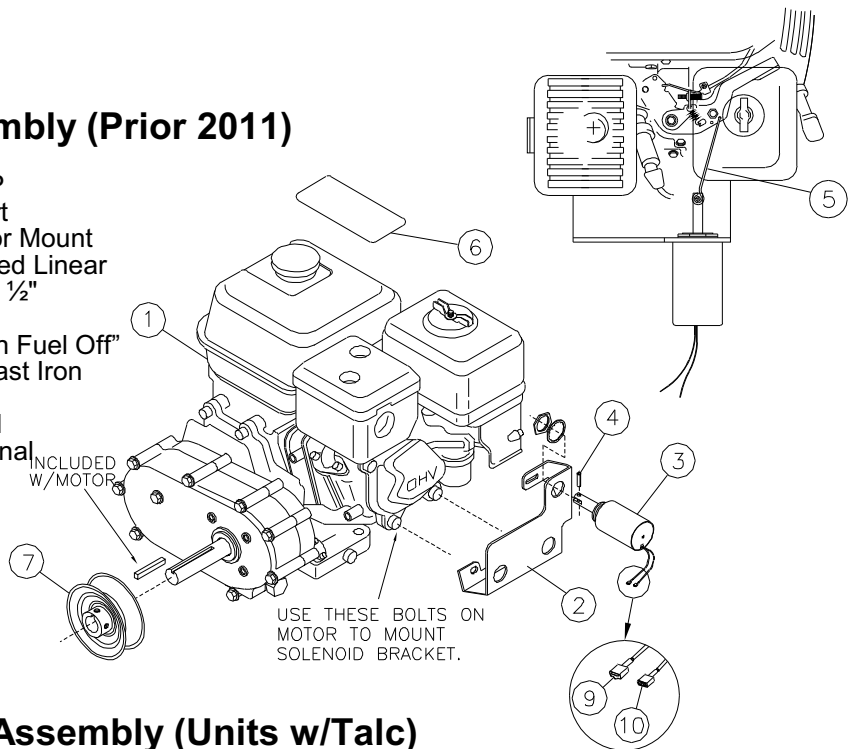
Item	Qty	Part No.	Description
1	1	03750400	Engine 5.5 HP Electric Start
2	1	973149	Solenoid Motor Mount
3	1	03961000	Solenoid Sealed Linear
4	1	285148	Adjustable Solenoid Plate
5	1	611202	Throttle Wire
6	2	05316500	Decal "Caution Fuel Off"
7	1	16612400	Sheave 3.5 Cast Iron
8	1	03959400	HHCS 1/4-28 x 1"
9	1	03960200	Hex Nut 1/4-28
10	4	01057900	HHCS 1/4-28 x 3/4"
11	4	02016400	Flat Washer 1/4"
12	4	330522	Nylock 1/4"



Seed Box Tote Engine Assembly

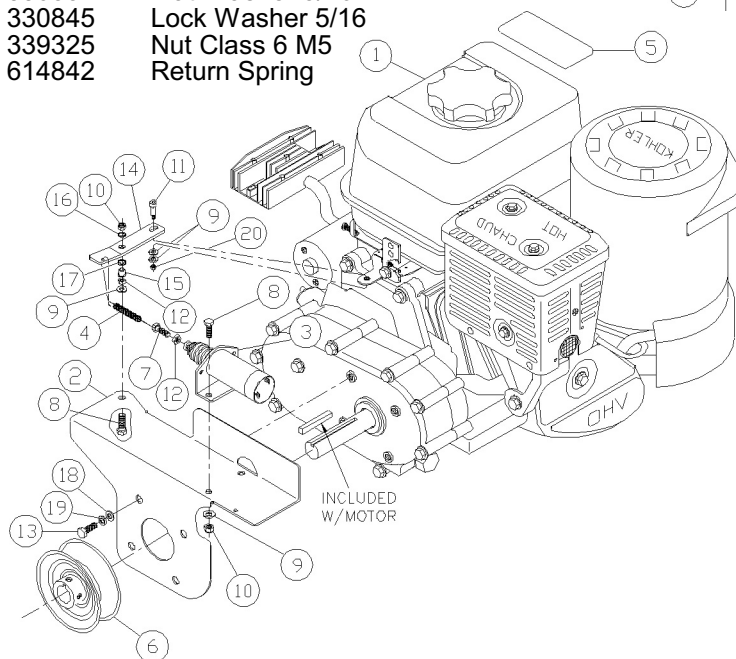
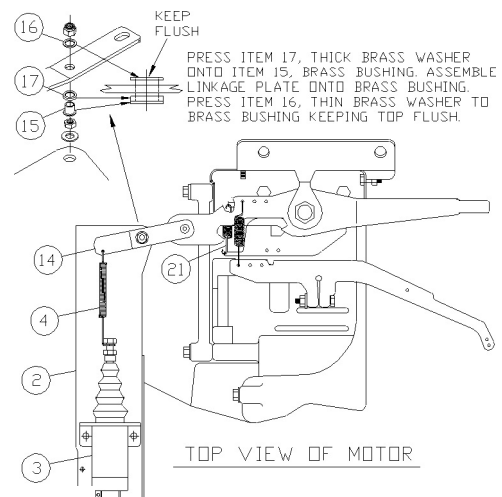
#62772900 - Engine Assembly (Prior 2011)

Item	Qty	Part No.	Description
1	1	03750400	Engine 5.5 HP Electric Start
2	1	20530200	Solenoid Motor Mount
3	1	03751500	Solenoid Sealed Linear
4	1	03757200	Roll Pin 1/8" x 1/2"
5	1	03770500	Throttle Wire
6	2	05316500	Decal "Caution Fuel Off"
7	1	16612400	Sheave 3.5 Cast Iron
8			
9	1	03772100	Male Terminal
10	1	03771300	Female Terminal

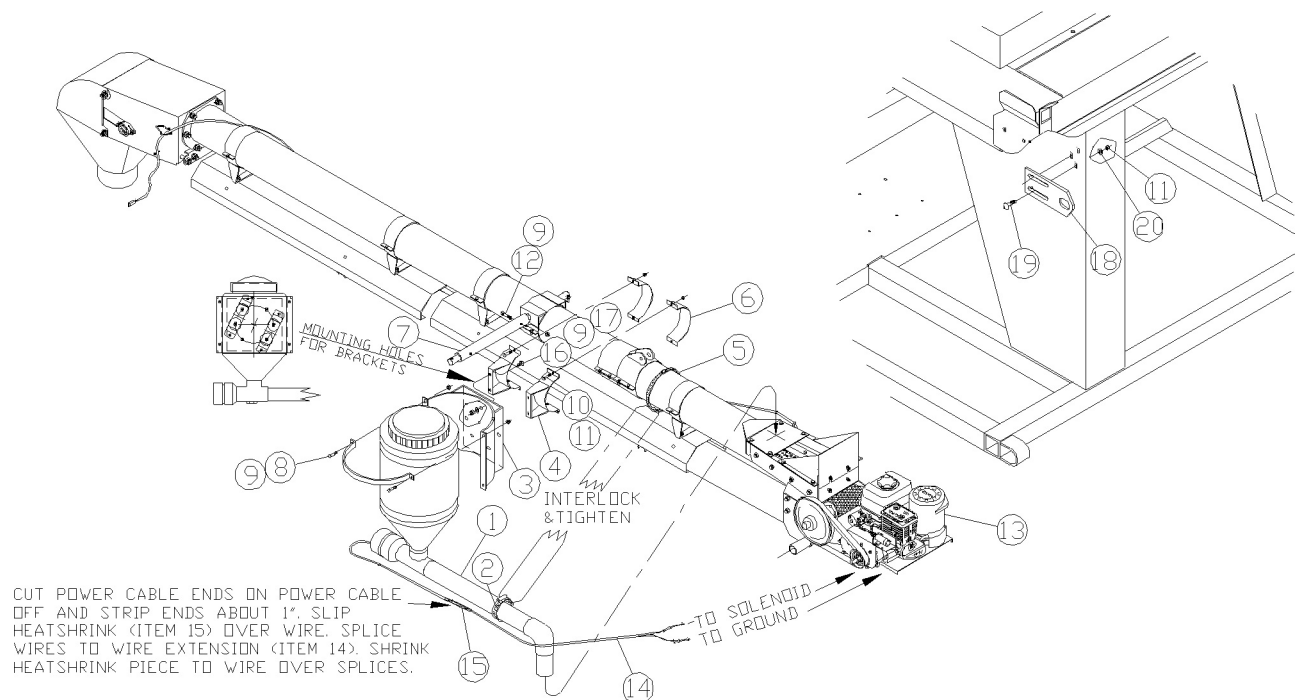


#880658 - Kohler Engine Assembly (Units w/Talc)

Item	Qty	Part No.	Description
1	1	614834	Kohler Engine 7 HP 10 Amp
2	1	277723	Motor Mount
3	1	03961000	Solenoid
4	1	04123600	Throttle Spring
5	2	05316500	Decal "Caution Fuel Off"
6	1	16612400	Sheave 3 1/2" Cast
7	1	03959400	HHCS 1/4-28 x 1"
8	3	01057900	HHCS 1/4 x 3/4"
9	5	02016400	Flat Washer 1/4"
10	3	330522	Nylock 1/4"
11	1	339317	Shoulder Bolt 6mm x 6mm
12	2	03960200	Hex Nut 1/4-28
13	4	00352500	HHCS M8 x 16
14	1	277731	Throttle Linkage Plate
15	1	608711	Bearing 1/4 x 3/8 x 3/8
16	1	608695	Thrust Bearing 3/8 x 3/4 x 1/16
17	1	608703	Thrust Bearing 3/8 x 3/4 x 1/8
18	4	330852	Flat Washer 5/16
19	4	330845	Lock Washer 5/16
20	1	339325	Nut Class 6 M5
21	1	614842	Return Spring



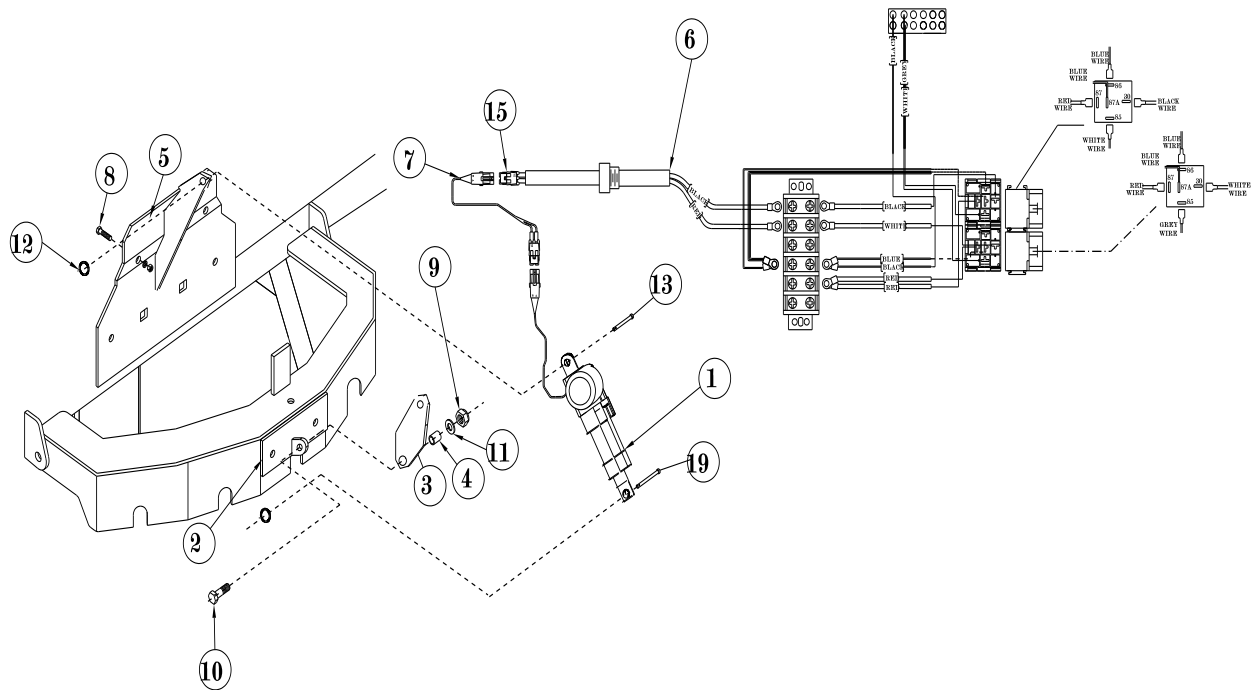
Talc



Item	Qty	Part No.	Description	Item	Qty	Part No.	Description
1	1	615039	Free Flo Inoculator Kit	11	4	330837	Nylock 3/8"
2	1	606392	Hose Clamp 2½" Worm Drive	12	1	02300200	HHCS 5/16 x 2"
3	1	978239	Talc Mount	13	1	880658	Engine Assembly
4	2	82489600	Belt Cover Mount	14	1	615047	Inoculator Wire Extension
5	1	03423100	Hose Clamp 6" Worm Drive	15	4"	03638400	Heatshrink 1/4 x 4'
6	2	16577910	Half Band 2" x 6"	16	4	01047000	Carriage Bolt 5/16 x 1"
7	1	977652	Lockout Shaft	17	4	330852	Flat Washer 5/16
8	4	01010800	HHCS 5/16 x 1"	18	1	245092	Transport Lock Plate
9	4	331611	Nylock 5/16"	19	2	335919	Carriage Bolt 3/8 x 1 1/4"
10	4	01158500	HHCS 3/8" x 1 1/4"	20	2	330894	Flat Washer 3/8"

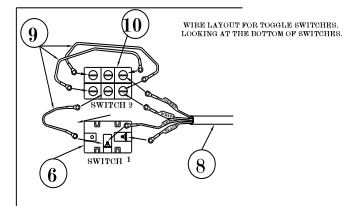
#63397400 - Actuator Kit 2 Box 2 Bar Remote

Item	Qty	Part No.	Description
1	1	883421	Actuator Assy
2	1	90959800	Actuator Mount 2Box
3	1	32533200	Plate HR .188 x 1.81 x 4.151
4	2	149393	Bushing .500 x .375 x .313
5	1	9095800	2 Box Actuator Bast Mount WA
6	1	63399000	Retrofit Kit Remote to Acutator
7	1	883413	Actuator Wire Assy
8	6	01017300	HHCS .375 x 1.00 x G5
9	6	01916600	Nut .375 Hex Nylock
10	1	01158500	HHCS .375 x 1.25 x G5
11	2	330894	Washer .375 Flat
12	2	04430500	Split Ring
13	2	04432100	Clevis Pin



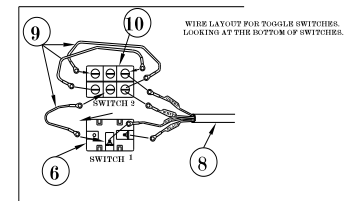
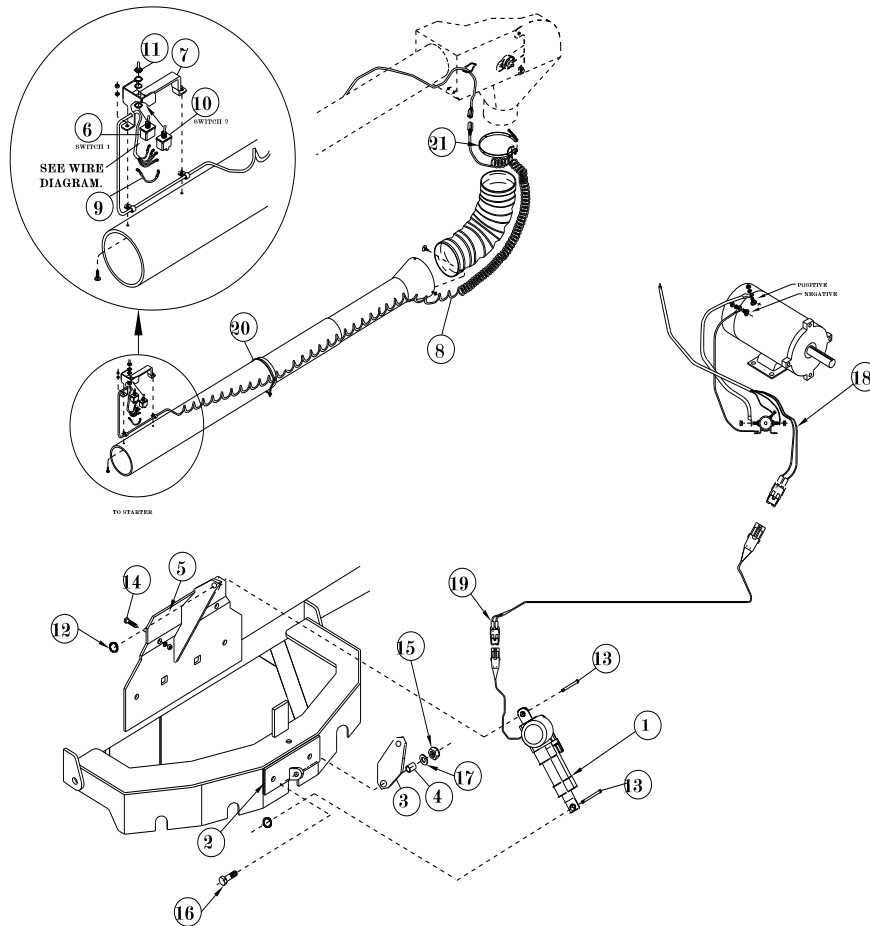
#63398200 - Actuator Kit 2 Box 2 Bar - Hardwire

Item	Qty	Part No.	Description
1	1	883421	Actuator Assy
2	1	90959800	Actuator Mount 2Box
3	1	32533200	Plate HR .188 x 1.81 x 4.151
4	2	149393	Bushing .500 x .375 x .313
5	1	90958000	2 Box Actuator Bast Mount WA
6	1	03723400	Toggle Switch
7	1	62749700	Flexible Spout Handle Assy
8	1	62716600	Retractable Wire Assy - 4 Wire
9	1	62717400	Switch Connector Wire Assy
10	1	03713500	Toggle Switch (ON) - OFF
11	2	03682200	Toggle Switch Boot Seal
12	2	04430500	Split Ring
13	2	04432100	Clevis Pin
14	6	01017300	HHCS .375 x 1.00 x G5
15	6	01916600	Nut .375 Hex Nylock
16	2	01159500	HHCS .375 x 1.25 x G5
17	2	330894	Washer .375 Flat
18	1	63400600	Tube Cable Wire Assy 2 Box Actuator
19	1	883413	Actuator Wire Assy
20	1	571281	Cable Tie - 24'
21	2	571299	Cable Tie - 8 1/2"



#63402200 - Actuator Kit 2 Box 2 Bar - Electric

Item	Qty	Part No.	Description
1	1	883421	Actuator Assy
2	1	90959800	Actuator Mount 2Box
3	1	32533200	Plate HR .188 x 1.81 x 4.151
4	2	149393	Bushing .500 x .375 x .313
5	1	90958000	2 Box Actuator Bast Mount WA
6	1	03723400	Toggle Switch
7	1	62749700	Flexible Spout Handle Assy
8	1	62716600	Retractable Wire Assy - 4 Wire
9	1	62717400	Switch Connector Wire Assy
10	1	03713500	Toggle Switch (ON) - OFF
11	2	03682200	Toggle Switch Boot Seal
12	2	04430500	Split Ring
13	2	04432100	Clevis Pin
14	6	01017300	HHCS .375 x 1.00 x G5
15	6	01916600	Nut .375 Hex Nylock
16	2	01159500	HHCS .375 x 1.25 x G5
17	2	330894	Washer .375 Flat
18	1	63401400	Tube Cable Wire Assy 2 Box Electric
19	1	883413	Actuator Wire Assy
20	1	571281	Cable Tie - 24"
21	2	571299	Cable Tie - 8 1/2"



Remote Control

To Program Remote:

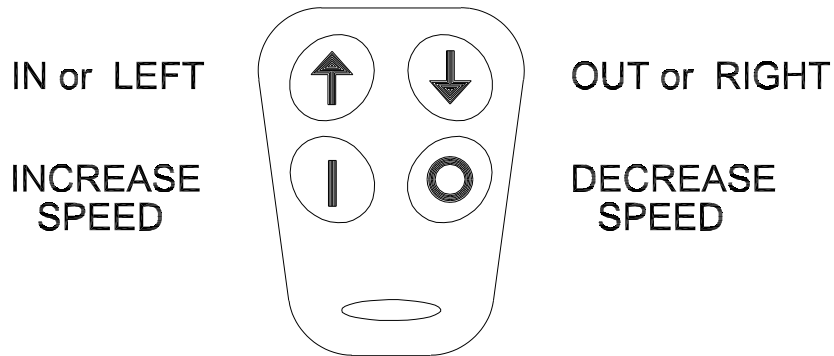
Power up the unit. When you do so, the LED on the receiver unit will flash RED four times. This indicates that the unit has received power. There is magnetically controlled switching circuitry embedded in the receiver unit. Place a fairly powerful magnet over the receiver "learn" area (near R11) for a brief moment (3 seconds), and then remove it. The LED will go to constant RED state. Now immediately press any button on the transmitter you are attempting to learn in. The LED will go to a GREEN/YELLOW color. This confirms that the receiver has picked up a signal from the transmitter, and subsequently learned that signal. Communication has been established, and it is now ready to function properly.

Troubleshooting:

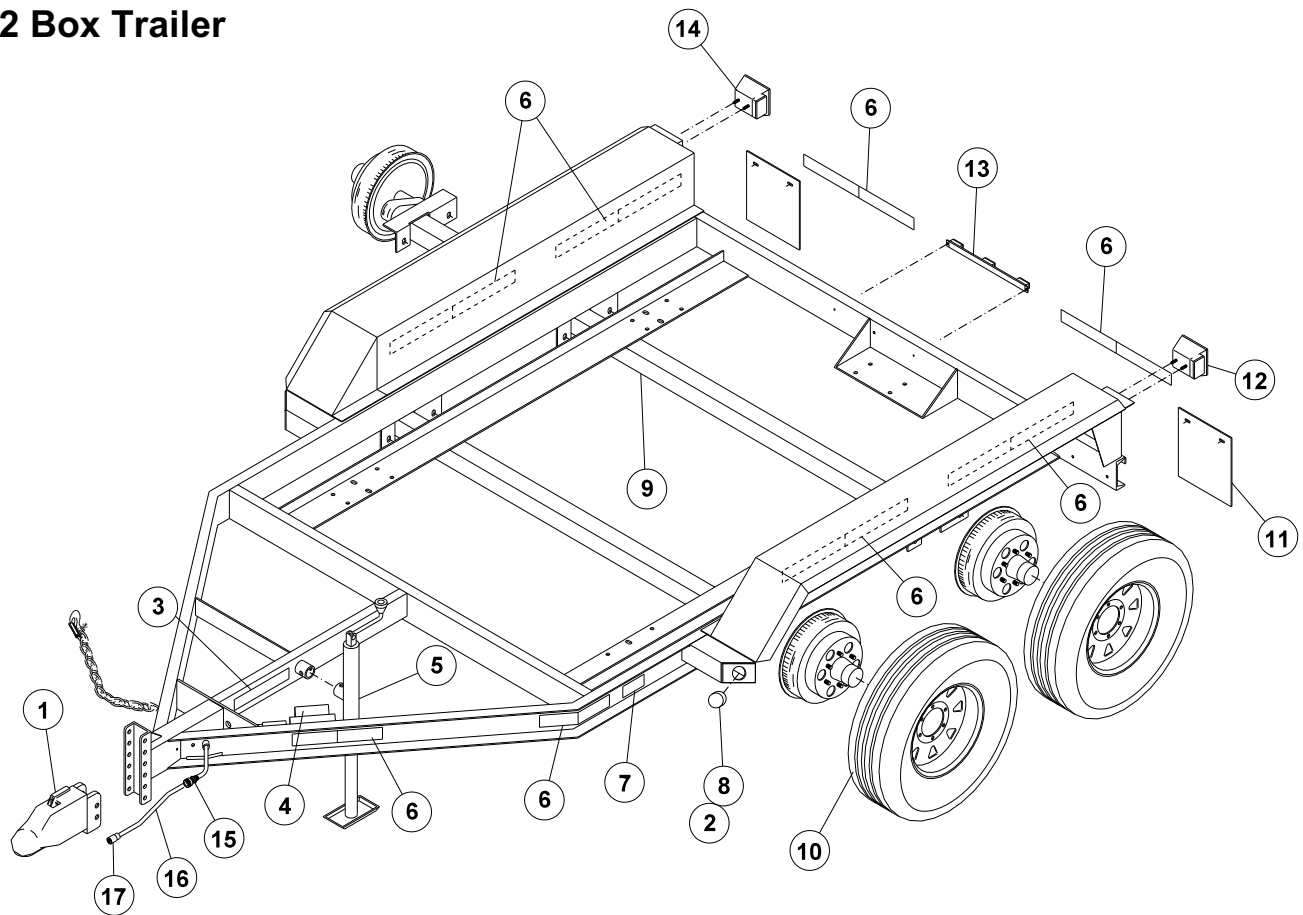
Should the above procedure not complete successfully, wait until the LED light goes out, and repeat the procedure. If for any reason you experience a second failure of the learn procedure, do the following. Place the magnet on the learn area and the LED will go to a constant RED state. Leave the magnet in place on the receiver until the LED light goes out (approximately 10 seconds). This action completely clears the receiver's memory. It's akin to reformatting, or freeing up all of the space on a computer hard drive. Once you have cleared the memory, proceed with the standard learn procedure detailed above for each of the key fob transmitters you wish to use with the device. If, after all of the procedures detailed above are completed, the unit is still not functioning, check the battery in the transmitter once again. (Occasionally, even new batteries fail, or are defective from the factory. If you have a voltage meter, confirm that battery voltage is at least 2.7 volts.) If that still does not solve the problem, contact CrustBuster/Speed King, Inc. At (620) 227-7106.

Battery:

It is recommended that the battery be replaced every year.



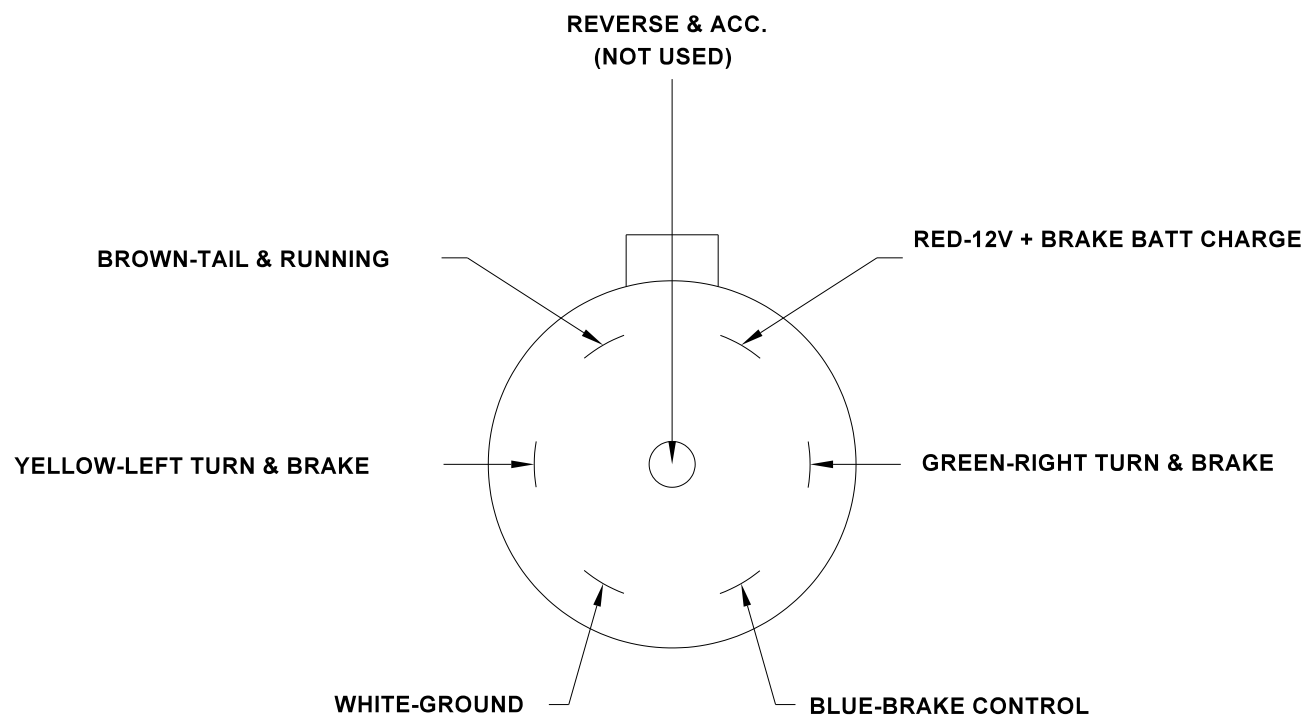
2 Box Trailer



#035097- 2 Box With Brakes #035105- 2 Box Without Brakes

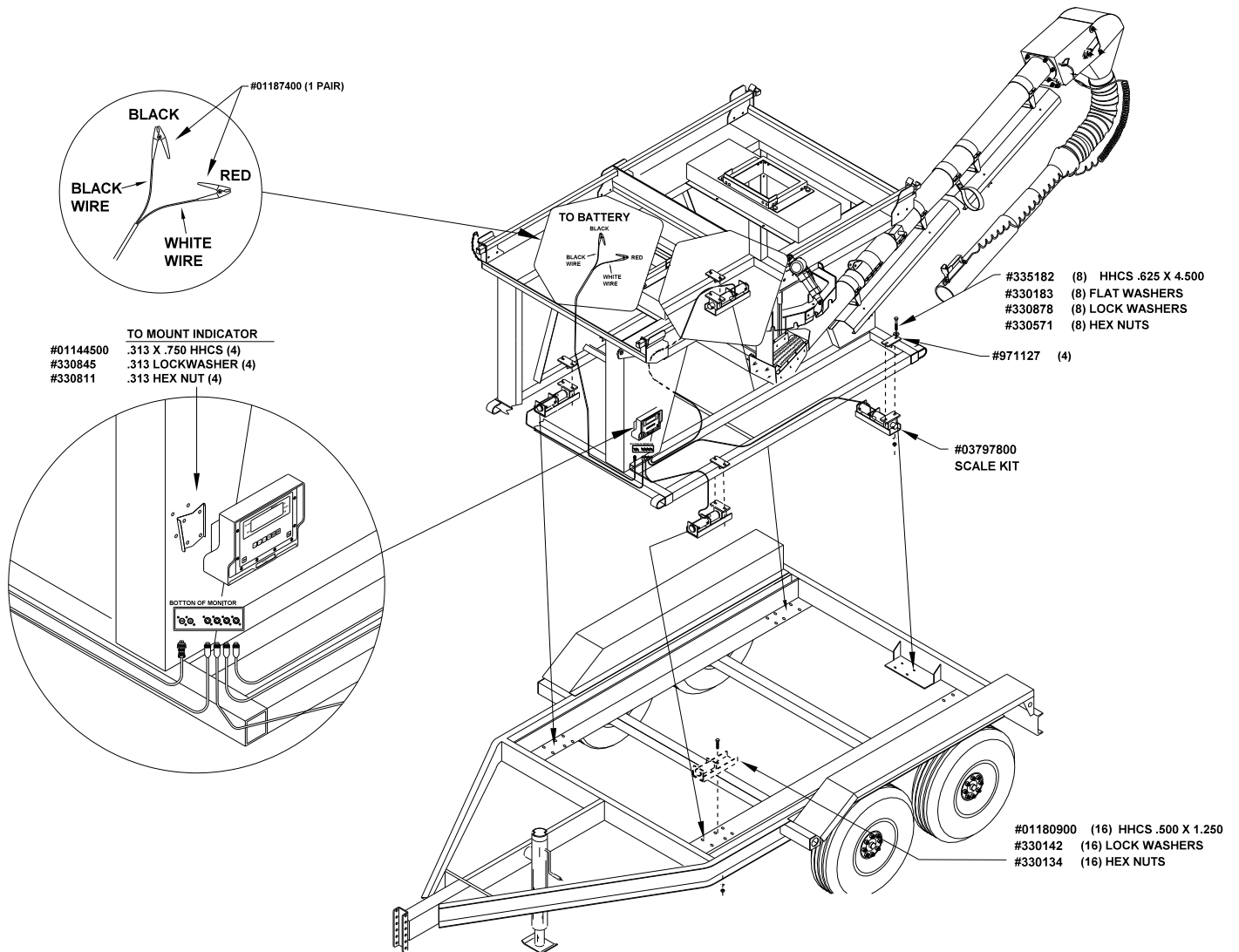
Item	Part No.	Description
1	609669	Coupler 20,000# - 2.313" Ball
2	609644	Light Mounting Kit
3	609875	Decal Safety 5 Point
4	609677	Break Away Kit W/Box & Battery
5	530444	Jack 5000#
6	03726700	Reflector Tape 2" Red/White
7	609727	Vin Label
8	613364	Clearance Light Amber
9	609842	Axle 6000# With Brakes
	610105	Axle 6000# Less Brakes
10	531319	Tire & Rim Mounted ST225-75-R15-6 Ply
11	571653	Gravel Guard
12	613406	Tail Light Red Left
13	613372	Light Bar Red
14	613380	Tail Light Red Right
15	473470	Strain Relief .500 To .625
16	609917	Conductor Wire 14-6
17	609909	Connector 6 Contact Male
	611368	Dust Cap 6000# Axle 6B

Trailer RV Plug



NOTE: LOOKING FROM BACK OF PLUG

2 Box Scale Kit Illustration





P.O. Box 526

Spearville, Kansas 67876

(620) 227-7106
